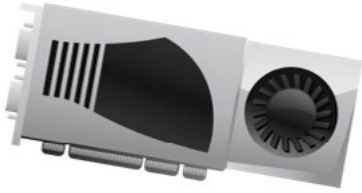


Sales guide

HP stable and consistent offerings



Choosing hardware and software for a workstation is often straightforward—you know what you need before you even start looking at platforms. What if you could pick and choose your components based not only on your individual requirements, but also on the assurance that they would be available for the lifecycle of your HP Desktop Workstation? Now, with HP stable & consistent offerings, you can. Choose from a range of options that will be available as long as your HP Workstation, including:



- Processors
- Graphics cards
- Hard drives
- Optical drives
- Memory
- Operating systems
- Peripherals

Sound amazing? It is. That's HP.



Imagine measuring refresh cycles in years instead of months. HP stable & consistent offerings allow HP Desktop Workstation customers such as OEMs and large enterprises to simplify their certification and support burdens and streamline large deployments with configurations that are long-term future-ready right out of the box. This stability is also a bonus for resellers and channel partners who want to meet the specialized platform stability requirements of their large volume customers and help them minimize the disruptions associated with repeatedly qualifying new configurations.

As part of its commitment to hardware, software, and solution innovation, HP is proud to introduce this breakthrough platform configuration stability to HP Workstation customers. HP stable & consistent offerings are built on the foundation of a carefully chosen set of hardware and software designed and tested to work with all HP Desktop Workstation platforms from product launch through their end of life. The software solutions include the remote access solution HP Remote Graphics Software. These components and their corresponding HP Desktop Workstation platform compatibility are outlined on the next page.*

HP stable & consistent offerings are available worldwide to all HP Desktop customers at no additional cost—no kidding. Simply select your hardware and software components when you customize your HP Desktop and be assured that you'll be able to buy that same configuration throughout the lifecycle of the product, from product launch through retirement.

* While it is HP's intention to provide the selected components throughout the lifecycle of the workstations, please be aware that it is possible that a supplier could discontinue an offering earlier than expected. If this were to happen, it could result in HP's inability to continue to procure and make available that component.

Stable features

	HP Z2 Mini G3	HP Z240 Tower	HP Z240 SFF	HP Z440	HP Z640	HP Z840	HP Z4 G4	HP Z6 G4 HP Z8 G4
Operating System								
None								
Processor¹								
Intel® Xeon® E3-1225 v5 4C	•	•	•					
Intel® Xeon® E3-1240 v5 4C		•	•					
Intel® Xeon® E3-1245 v5 4C	•	•	•					
Intel® Xeon® E5-1603 v3 4C				•	•			
Intel® Xeon® E5-1620 v3 4C				•	•			
Intel® Xeon® E5-1630 v3 4C				•	•			
Intel® Xeon® E5-2620 v3 6C					•	•		
Intel® Xeon® E5-2630 v3 8C				•	•	•		
Intel® Xeon® E5-2643 v3 6C					•	•		
Intel® Xeon® W-2102 4C							•	
Intel® Xeon® W-2123 4C							•	
Intel® Xeon® W-2125 4C							•	
Intel® Xeon® 4108 Silver 8C								•
Intel® Xeon® 4114 Silver 10C								•
Intel® Xeon® 6128 Gold 6C								•
Graphics								
NVIDIA® NVS™ 310		•	•	•	•	•		
NVIDIA® NVS™ 510		•	•	•	•			
NVIDIA® Quadro® K620		•	•	•	•	•		
NVIDIA® Quadro® K2200		•		•	•	•		
AMD FirePro™ W2100		•	•	•	•	•		
AMD Radeon™ Pro WX 3100							•	•
Storage²								
500 GB SATA 7200 rpm	•	•	•	•	•	•		
1 TB SATA 7200 rpm	•	•	•	•	•	•	•	•
Optical device³								
Slim SuperMulti DVD/RW		•	•	•	•	•		
System memory^{4*}								
4 GB DDR3-2133 ECC DIMM		•	•					
8 GB DDR3-2133 ECC DIMM	•	•	•					
8 GB DDR4-2133 RDIMM				•	•	•		
16 GB DDR4-2133 RDIMM	•			•	•	•		

*For the HP Z4 G4, HP Z6 G4, and HP Z8 G4 HP recommends choosing 16 GB or larger memory DIMMs.

- ¹ Multi-core is designed to improve performance of certain software products. Not all customers or software applications will necessarily benefit from use of this technology. Performance and clock frequency will vary depending on application workload and your hardware and software configurations. Intel®'s numbering, branding and/or naming is not a measurement of higher performance.
- ² For hard drives, 1 GB = 1 billion bytes. TB = 1 trillion bytes. Actual formatted capacity is less. Up to 20 GB is reserved for system recovery software.
- ³ Actual speeds may vary. Does not permit copying of commercially available DVD movies or other copyright protected materials. Intended for creation and storage of your original material and other lawful uses.
- ⁴ Each processor supports up to 2 channels (HP Z1/HP Z240 SFF/HP Z240 Tower) or 4 channels (HP Z440/HP Z640/HP Z840) of DDR4 memory (The HP Z1 G2 supports only DDR3). To realize full performance at least 1 DIMM must be inserted into each channel.

Sign up for updates
hp.com/go/zworkstationsoem



Share with colleagues

© Copyright 2018 HP Development Company, L.P. The information contained herein is subject to change without notice. The only warranties for HP products and services are set forth in the express warranty statements accompanying such products and services. Nothing herein should be construed as constituting an additional warranty. HP shall not be liable for technical or editorial errors or omissions contained herein.

Intel and Xeon are trademarks of Intel Corporation in the U.S. and/or other countries. AMD and FirePro are trademarks of Advanced Micro Devices, Inc. NVIDIA, Quadro, and NVS are trademarks and/or registered trademarks of NVIDIA Corporation in the U.S and other countries. All other trademarks are the property of their respective owners.

