



98 centimeters
38.6 inches

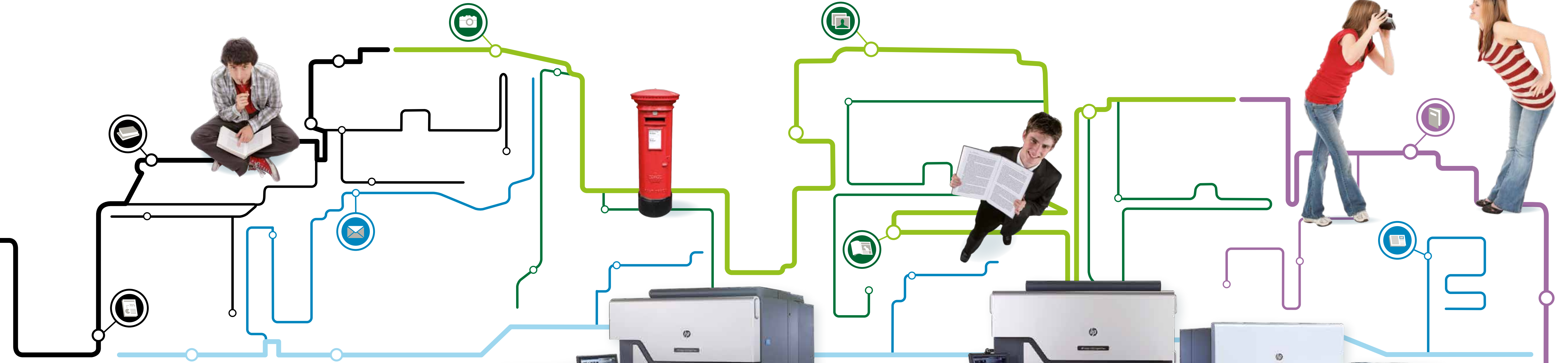
HP Indigo W7250 Digital Press

The HP Indigo W7250 Digital Press is a profitable, application-focused high-volume solution with offset-matching quality that extends your capabilities to print new and diverse products and applications:

- Publishing—Print-on-demand books, manuals, journals, and magazines
- Photo speciality—Produce photobooks, photobook covers, calendars, lay-flat books, photo cut prints, and cards
- Direct mail and TransPromo—Create high-quality personalized direct mail campaigns and differentiated transactional statements

Main features:

- High productivity—Prints color at 320 ppm in Enhanced Productivity Mode (EPM) and 960 ppm in monochrome
- Superior quality—HP Indigo's liquid ElectroInk technology makes Indigo print interchangeable with offset and photo applications
- End-to-end solution—Provides a complete production solution, with a powerful and scalable print server, diverse workflow solutions and ending with a broad range of inline finishing solutions
- Widest substrate range—Inline Priming Unit (ILP) enables printing on virtually any type of paper in the range of 40 gsm to 300 gsm



Technical specifications

Printing speed	14,400 four-color pages per hour 19,200 color pages per hour 28,800 two-color pages per hour 57,600 one-color pages per hour
Image resolution	812 and 1219 dpi at 8 bit 2438 x 2438 dpi addressability high Definition Imaging (HDI) Line screens: 144, 175, 180

Image size	12.48 x 38.58 in (317 x 980 mm) max
Paper format	Max. web width: 13.4 in (340 mm) Min. repeat length: 18.9 in (480 mm) 4 colors Max. repeat length: 38.6 in (980 mm)
Paper weight	Roll-to-roll: 40 to 300 gsm (27lb text to 110 lb cover) subject to paper stiffness Monochrome: 70 to 140 gsm (47 to 95 lb text) uncoated paper (Paper specifications may change due to finishing line capabilities.)
Unwinder	Input roll max. diameter: 51.2 in (1300 mm) Input roll inner core diameter: • Standard: 3 in (76 mm) • Optional: 6 in (152 mm)

Press dimensions (including inline priming unit and unwinder)	Length: 38.75 ft (11.8 m) Width: 7.5 ft (2.3 m) Height: 6.83 ft (2.1 m)
Press weight (including inline priming unit and unwinder)	15 653 lb (7100 kg)
Options:	
Expanded color capabilities	HP IndiChrome 5-, 6-, and 7- color printing HP IndiChrome Ink Mixing System
Post-press	Rewinder: Hunkeler Rewind RW6 Cutting and offset stacking: Hunkeler POPP6 Or other customized solutions according to customer needs

Application-focused high-volume solution—now with higher speed for higher profit