

Rack mounting and the HP Workstation



Whether it is an IT technician servicing a single rack, or a team of professionals managing multiple data centres—with HP rack mounting solutions, everyday tasks are made easy. HP's rack mounting kits are engineered with the same customer-centric design philosophies that have made the HP Workstation product line a continuing success.

Introduction

In order to maximise rack density, HP engineers have designed a low-profile fixed-rail solution that can be customised on-the-spot to fit any of the HP Z2 Tower or Z4 series of Workstations. The system-tray features captive fasteners, allowing for quick and easy, tool-free access to the workstation. With integrated latches, the tray remains secured to the shelf until it is safe and ready to remove.

For the HP Z6/Z8 series of Workstations, HP has designed an enterprise-class rail solution that fully extends—allowing for in-rack configuration of the workstation. Gaining access to the interior components of a rack-mounted Z6/Z8 Workstation is a tool-free operation.

Rack mounting for the HP Z2/Z4 series Workstations

The HP Z2/Z4 Rack Mount Kit (W6D62AA) includes a set of fixed-rail support brackets that attach directly to the rack and provide a secure mounting platform for the system-tray and workstation. The fixed-rails are adjustable and can accommodate racks that are 24–30 inches deep.

The locking system-tray is engineered to provide tool-free access to the workstation. The tray includes release latches to ensure safe removal of the workstation from the server rack and a system ID label for easy identification.

NOTE: The HP Z240 is not compatible with the previous HP Z2/Z4 Rack Mount Kit (WH340AA). To allow customers to rack the HP Z240 with the previous HP Z2/Z4 Rack Mount Kit (WH340AA), the HP Z240 Rail Rack Adapter Bracket (W6D63AA) is required.

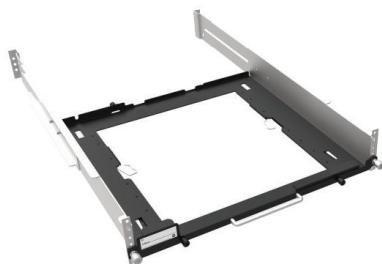


Figure 1. The HP Z2/Z4 Rack Mount Kit (W6D62AA) assembled



Figure 2. The HP Z440 installed in a Z2/Z4 Rack Mount Kit (W6D62AA)

Rack mounting for the HP Z6/Z8 series Workstations

HP's Z6/Z8 Rack Mount Kit (B8S55AA) features enterprise-class, three-section ball-bearing extension rails. These rails are fully extendable, allowing the unit to slide completely out of the rack for servicing. Whether it's adding memory, swapping hard disk drives, or installing an option card—upgrading a rack-mounted workstation is a snap.

The HP Z6/Z8 Rack Mount Kit rails install into HP racks without using tools, making setup convenient and efficient. The inner slide and mounting flanges attach to the computer chassis using a set of screws for added strength and stability. The top mounting holes are concealed underneath the top plastic trim, which must be removed along with the rear handle to attach the inner slide and mounting flanges.



Figure 3. A rack-mounted HP Z840 installed with a HP Z6/Z8 Rack Mount Kit (B8S55AA) showing access to interior workstation components

Some of our customers need to mount their workstations into racks that are only 24 inches deep (such as those commonly used in the Broadcast industry) instead of the 29-30 inch deep racks that are commonly used in the industry (including HP racks), so adjustability is an important objective. The HP Z6/Z8 rack mount solution is adjustable to accommodate racks 24–30 inches deep. For convenience, the adjustable rails are shipped configured to fit standard HP racks.



Figure 4. The HP Z6/Z8 Rack Mount Kit (B8S55AA) components

How HP Rack Kits fit “U”

Broadcast and IT racks are typically measured in units of “U”—where each “U” is equal to 1.75” (44.5 mm). HP Rack Kits are designed to optimise the distribution of workstations in a server rack—providing each unit with sufficient airflow to maintain ideal operating temperatures and adequate clearances to gain access to the workstation. Refer to the table below to determine which rack kit is compatible with your workstation, and how much space is required.

HP product number	Description	Rack type supported* ^{1,2}	HP Z2 Series	HP Z4 Series	HP Z6 Series	HP Z8 Series
W6D62AA	HP Z2/Z4 Depth Adj. Fixed Rail Rack Kit	<ul style="list-style-type: none"> • HP Series-E Rack • Compaq 10000 Series Rack • IT Rack • Broadcast Rack* • May work on other third party racks 	4U	4U		
B8S55AA	HP Z6/Z8 Depth Adj. Sliding Rail Rack Kit	<ul style="list-style-type: none"> • HP Series-E Rack • Compaq 10000 Series Rack • IT Rack • Broadcast Rack* • May work on other third party racks 			4U	5U

* A special note about Broadcast Racks:

- For rack mounting HP Z2xx or HP Z4xx Workstations products Broadcast Racks are compatible as long as they do not have #10-32 or #12-24 threads. They must also have a punch through clearance of >8/32” hole on the rack itself.
- For rack mounting HP Z6xx and HP Z8xx Workstation products Broadcast Racks have a depth of 24” between the rails with mounting holes that are typically tapped for #10-32 threads are supported.

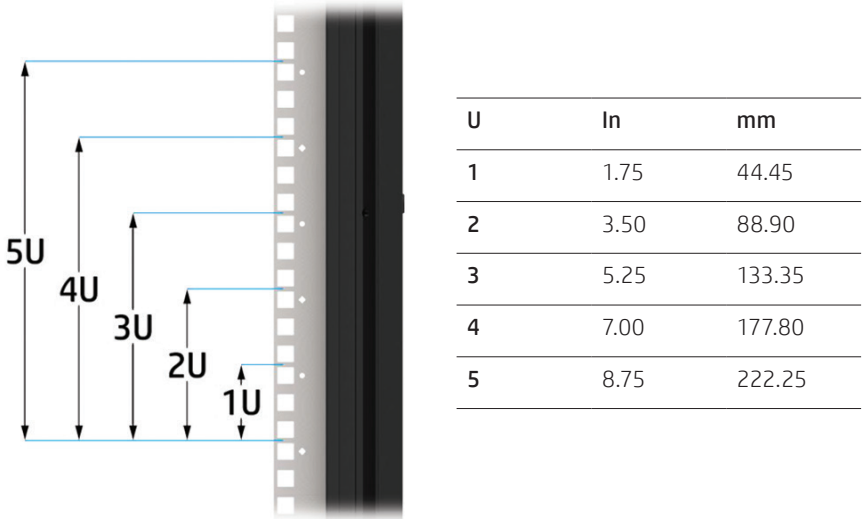


Figure 5. Layout and dimensions of a 5U rack space

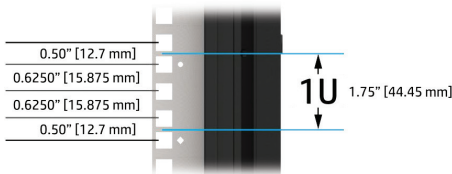


Figure 6. Rack mounting hole positioning in 1U rack space

Resources, contacts, or additional links

White papers with more depth on the capabilities and benefits of HP Z Workstations
hp.com/go/whitepapers

Information about HP Workstations
hp.com/go/workstations

Designed with the environment in mind

HP is committed to environmental sustainability. The HP Workstation design team has taken a proactive approach (beyond industry regulations) to recyclability and selecting materials that reduce the risk to the environment and health.

Looking ahead

HP will be releasing new Rack Kits mid-2016 to accommodate the Z240 Tower. There will be a new kit to replace the current WH340AA, as well as a Z240-specific rack adapter for customer who have already ordered the kit for the Z230. Rack Kit part numbers and other details will be provided when the new kits are released.

Conclusion

As a technology leader, HP continues to lead the way in innovative design solutions for rack mounting. HP Rack Mounting Kits are engineered to improve the end-user experience. HP is using its extensive experience in customer-centric designs to develop environmentally friendly, highly accessible, rack mounting solutions for today, and new innovations for tomorrow's more powerful systems.

¹ IT Racks typically have 30" depth between the front and rear rails, and either round or square untapped holes with clip-on nuts.

² Parts for installing the sliding rack mount kit in HP legacy racks are sold separately in adapter kit part number WD587AA and are compatible with the following rack models: E3660B, E3661B, E3662B, E7590A, J1450B or J1487A/B.

Sign up for updates
hp.com/go/getupdated



Share with colleagues



Rate this document

