



Turn paperwork into data that works

HP Scanjet Enterprise Flow 5000 s2/s3 Sheet-feed Scanners



Table of contents

- 3** Put your business information to work
- 4** Product walk around
- 5** Key benefits at a glance
- 6** Transform paper into business flow
- 8** Simple scanning —ready, set, go
- 11** Page-by-page confidence
- 13** Conserve resources without sacrificing performance
- 14** Technical specifications
- 15** Ordering information

Put your business information to work

Conquer paper overload—transform piles of documents into valuable digital information your business can use. Count on this fast, efficient HP Scanjet to turn out clear files you can edit and search with ease. Make collaboration easier and more efficient with one-touch cloud connectivity.¹

Who can benefit?

Do you scan high volumes of paper? Need to accelerate document capture workflows with two-sided, single-pass scanning and advanced image processing? The HP Scanjet Enterprise Flow 5000 s2/s3 Sheet-feed Scanners are ideal for those who need a smart, reliable way to digitise paper documents and add efficiency to office processes. Now you can transform those stacks of paper into searchable, editable files your business can use. These sheet-feed scanners are compact and packed with intuitive features that deliver clear, legible results and will help you collaborate with ease.



Product walk around

HP Scanjet Enterprise Flow 5000 s3 Sheet-feed Scanner shown

- 1 50-sheet automatic document feeder (ADF) with single-pass two-sided scanning at full speeds
- 2 Document input tray extension (shown not extended)
- 3 Two-sided scans at up to 60 images per minute (ipm) at 300 dpi, and single sided at up to 30 pages per minute (ppm)²
- 4 Latch to access paper path
- 5 Scan Simplex/Scan Duplex buttons to trigger single-sided or two-sided scans
- 6 OK/Select button allows you to scroll the list of profiles and view details
- 7 Back button, returns to previous menu
- 8 HP EveryPage delivers smoother paper handling for jobs of all kinds³
- 9 Output tray (shown partially opened)
- 10 Cancel button cancels a scan in progress
- 11 Tools button opens the HP Scanner Tools Utility
- 12 Two-line, 16-character LCD, displays scan profiles and status messages
- 13 Power on/off button
- 14 Sliding paper guides adjust from a width of 5.1 cm (2.0 inches) for business cards up to 21.6 cm (8.5 inches)
- 15 Hi-Speed USB 2.0 input
- 16 Power connection



Front view



Rear view

Series at a glance



Model	HP Scanjet Ent Flow 5000 s2 Sheet-feed Scanner	HP Scanjet Ent Flow 5000 s3 Sheet-feed Scanner
Product number	L2738A	L2751A
Scan speed ²	Single-sided: up to 25 ppm at 300 dpi (A4) Two-sided: up to 50 ipm at 300 dpi (A4)	Single-sided: up to 30 ppm at 300 dpi (A4) Two-sided: up to 60 ipm at 300 dpi (A4)
Duty cycle (recommended)	2,000 pages per day, A4	4,000 pages per day, A4

Key benefits at a glance

Spend less time scanning and more time focused on what matters most to your business. Work smarter and automate complex jobs with customised, one-touch settings and HP Smart Document Scan Software. More top features are highlighted below.



Transform paper into business flow

- Send scanned files where you need them—directly to cloud storage or SharePoint®.¹
- Conserve file space—this scanner series will automatically compress large files.
- Look sharp by producing clear, legible scans at up to 600-dpi resolution.
- Straighten out your paper shuffle by transforming hard copies into easy-to-use files.



Simple scanning—ready, set, go

- Save time and simplify complex scan jobs with HP Smart Document Scan Software.
- Create one-touch scanning efficiency by assigning your favourite settings to a single button.
- Preserve workspace with a compact scanner designed to fit in around the office.
- Save IT time and effort—simplify deployments, installations, and event alerts.



Page-by-page confidence

- Load stacks of documents—even mixed media sizes and types—and avoid missing pages in scanned files. It's all thanks to the innovative set of technologies known as HP EveryPage.³
- Accurately capture the right content, using auto-scan mode, crop, and colour detection.
- Breeze through sheet after sheet at speeds of up to 30 ppm and 60 ipm with the HP s3 model (up to 25 ppm and 50 ipm with the HP s2 model).²
- Deliver results again and again with the HP s3 model design that can handle a recommended scan volume of up to 4,000 pages per day (up to 2,000 pages per day with the HP s2 model).
- Count on legendary HP reliability and protect your investment with HP Services.



Conserve resources without sacrificing performance

- Spend energy wisely with HP Auto-Off technology. This scanner series can be set to turn off automatically when not needed to help reduce energy costs.⁴
- Conserve power without sacrificing performance. These devices are ENERGY STAR® certified, EuP-compliant and is registered EPEAT® Silver.
- Reduce energy consumption with LED-based scanning technology.⁵
- Decrease clutter and waste—scan, store and share documents digitally.
- Choose a responsibly-engineered, RoHS-compliant device that's free of mercury, lead, and other hazardous materials.

Transform paper into business flow



Bring better flow—not just more files—to your work style. Add the HP s2 or s3 scanner to your business processes to manage information smarter and more efficiently. Send scanned files to a variety of destinations at the touch of a button.

Send scanned files directly to folders, email, cloud storage, or SharePoint¹



Scan to the cloud

Does your scanning workload pile up? Set up custom profiles to store and share your scanned files with ease, sending them directly to a folder, to email, or to cloud sharing and storage. Choices include Google™ Drive, SkyDrive, Box.net, Dropbox, Evernote, SugarSync, and others through custom destination plug-ins.¹

You can also send directly to a Microsoft® SharePoint site—and you can extend the value of your document by entering metadata at the time of scan to fill in SharePoint columns, including title, author, subject, and keywords.

Easily handle variety

These highly capable scanners can handle a wide assortment of media types and sizes, including plain paper, envelopes, labels, checks, and cards (business cards, plastic ID cards, embossed cards). Supported sizes range from as small as 51 x 74 mm (2.0 x 2.9 inches) all the way up to 216 x 3098 mm (8.5 x 122 inches).

This scanner series also supports the use of carrier sheets (available from various online vendors). Carrier sheets can be used to protect important photos or to scan documents with an irregular shape, such as newspaper clippings. (Note: when using a carrier sheet you should turn off multi-feed detection.)

Automatically compress large files to save storage space

Slim down large files for more efficient storage—this HP Scanjet series automatically adjusts colour, contrast, and brightness for smaller file sizes. Choose highly compressed, archive-ready PDF formats.

Produce clear, legible scans at up to 600 dpi resolution

These sheet-feed scanners have a range of output options, with the ability to scan up to 600 dpi resolution. You can specify a range of output dpi values, including: 75, 100, 150, 200, 240, 300, 400, 500, or 600 dots per inch.

Transform hard copies into easy-to-use files

Straighten out your paper shuffle. Make paper documents more useful to everyone in the office. Turn files into editable text and business cards into contact lists.⁶

This HP Scanjet series includes embedded optical character recognition (OCR) technology and third-party applications including I.R.I.S. Readiris Pro, PaperPort, and Cardiris business card recognition software. With OCR, you can scan paper documents and turn them into text-searchable PDF files and fully searchable and editable documents, including Microsoft Word files. OCR is a key feature of more advanced workflows, helping to enable the indexing and retrieval of documents.



Scan to an editable file

Supported OCR languages

HP Smart Document Scan Software (SDSS) includes support for the following languages:

Afrikaans, Albanian, Aymara, Basque, Bemba, Blackfoot, Breton, Bugotu, Bulgarian, Byelorussian, Catalan, Chamorro, Chechen, Chinese (Simplified), Chinese (Traditional), Corsican, Croatian, Crow, Czech, Danish, Dutch, English, Esperanto, Estonian, Faroese, Fijian, Finnish, French, Frisian, Friulian, Gaelic (Irish), Gaelic (Scottish), Galician, Ganda/Luganda, German, Greek, Guarani, Hani, Hungarian, Icelandic, Ido, Indonesian, Interlingua, Inuit, Italian, Japanese, Kabardian, Kasub, Kawa, Kikuyu, Kongo, Korean, Kpelle, Kurdish, Latin, Latvian, Lithuanian, Luba, Luxembourgian, Macedonian, Malagasy, Malay, Malinke, Maltese, Maori, Mayan, Miao, Minankabaw, Mohawk, Moldavian, Nahuatl, Nyanja, Occidental, Ojibway, Papiamentu, Pidgin English, Polish, Portuguese, Portuguese (Brazilian), Provencal, Quechua, Rhaetic, Romanian, Romany, Ruanda, Rundi, Russian, Sami, Sami Lule, Sami Northern, Sami Southern, Samoan, Sardinian, Serbian (Cyrillic), Serbian (Latin), Shona, Sioux, Slovak, Slovenian, Somali, Sorbian, Sotho, Spanish, Sundanese, Swahili, Swazi, Swedish, Tagalog, Tahitian, Tinpo, Tongan, Tswana, Tun, Turkish, Ukrainian, Visayan, Welsh, Wolof, Xhosa, Zapotec, Zulu.

Readiris Pro supports many of the above with additional languages, including:

Afaan Oromo, Arabic, Asturian, Azeri (Latin), Balinese, Bikol, Bislama, Bosnian (Cyrillic), Bosnian (Latin), Bulgarian-English, Byelorussian-English, English (UK), German (Switzerland), Greenlandic, Haitian Creole, Hebrew, Hiligaynon, Javanese, Kapampangan, Kazakh, Kicongo, Kinyarwanda, Macedonian-English, Madurese, Manx (Gaelic), Mexican, Moldavian (Cyrillic), Numeric, Occitan, Rundi, Russian-English, Serbian-English, Tatar (Latin), Tetum, Tok Pisan, Tswana, Turkmen (Latin), Uzbek, Waray.

Choose from multiple OCR output file formats

When scanning OCR, you can select from a variety of file formats to best meet your needs. Some of the predominant formats include:

- **Searchable PDF** (.pdf) creates a PDF file with text you can search and select, while preserving the appearance of the scanned document.
- **PDF/A** (.pdf) is a type of PDF designed for long-term archival of electronic documents. All formatting information in the document is self-contained. You can search and select text.
- **Word** (.doc or .docx) creates a Microsoft Word-compatible file. Some of the original formatting will be duplicated using this option. (Use Readiris Pro to output in docx file format.)
- **Rich Text Format** (.rtf) is an alternative text format that can be opened by most word processing programmes. Some of the original formatting will be duplicated using this option.
- **Text** (.txt) creates a plain text or Unicode text file that can be opened in any word processing programme. Unicode is used to consistently represent text in any language. Formatting is not saved.
- **Excel** (.xls or .xlsx) creates a Microsoft Excel-compatible spreadsheet file. Some of the original formatting will be duplicated using this option. (Use Readiris Pro to output in .xlsx file format.)
- **Additional OCR formats**, including: Hypertext Markup Language (.html), Extensible Markup Language (.xml), WordPerfect 6.0 (.wpd), XML Paper Specification (.xps), ebook (.opf).

Image file formats

When you don't need optical character recognition, or you are scanning images or graphics, you can select from multiple non-OCR image file formats and settings.

- **PDF image** (.pdf) is a PDF file that does not contain recognised text. You cannot search for text inside this file type.
- **JPEG image** (.jpg) is one of the most popular graphics file formats. JPEG compression can result in a significant reduction of the file size. The amount of compression can be specified.
- **Single-page TIFF** (.tif) is the Tagged Image File Format. You can apply a variety of compression options to TIFF images. You can also choose to leave TIFF files in an uncompressed state.
- **Multi-page TIFF** (.tif) can save multiple scanned pages to a single TIFF file rather than a series of files for each page.
- **Bitmap image** (.bmp) files are uncompressed raster images comprised of a rectangular grid of pixels. BMP is a relatively common file format used across a variety of systems.
- **Portable Network Graphics** (.png) is a raster graphics file format that supports lossless data compression. PNG was designed for transferring images on the Internet.

Supported OCR output languages

HP Smart Document Scan Software supports 121 OCR languages (see the list to the left). Switching the output language is easy through a dropdown menu in the Destinations tab.

Readiris Pro recognises documents in 137 languages. All American and European languages, including the Central-European, Baltic and Cyrillic languages as well as Greek and Turkish are supported. Readiris also recognises Arabic, Farsi and Hebrew, as well as four Asian languages: Japanese, Simplified and Traditional Chinese and Korean.

Simple scanning —ready, set, go



Make scanning less time-intensive. With custom profiles, you can make complex tasks automatic, using a simple interface and built-in software. Resize pages, eliminate flaws, and enhance colours for beautiful scans that are better than the original.

Save time with HP Smart Document Scan Software

HP Smart Document Scan Software (SDSS) helps you get the most out of your sheet-feed scanner. This fast, easy-to-use capture and routing application helps you streamline document capture workflows. Customise options to enhance, manipulate, send and store your scanned documents. Set up custom scan profiles to automatically carry out complex tasks, such as blank page removal, batch scanning, image cleanup, and even sending to multiple destinations, including Microsoft® SharePoint—all at the touch of a button. Plus, ad-hoc scanning for one-time jobs provides convenient flexibility.

Create and manage scan profiles

HP SDSS lets you choose from a number of scan profiles with preconfigured settings. Profiles can be created and edited for common scanning scenarios. You can even give profiles descriptive names that appear on the device control panel.

The screenshot shows the HP Smart Document Scan Software window. The 'Scanner' dropdown is set to 'HP Scanjet 5000 s2'. Under 'Select a Scan Profile:', four profiles are listed, each with a green checkmark: 'B&W to Searchable PDF (HP Scanjet 5000 s2)', 'Fast B&W to Image PDF (HP Scanjet 5000 s2)', 'Auto detect color to searchable PDF sent via e-mail (HP Scanjet 5000 s2)', and 'One button color simplex to image PDF (HP Scanjet 5000 s2)'. To the right of the list are buttons for 'Create new profile...', 'Edit profile...', 'Delete profile', 'Move profile up', and 'Move profile down'. Below the list, there is a preview area with text: 'Save black and white scans to searchable PDF. Auto detect page size and Auto orient will be applied. Both sides of the pages will be scanned and blank pages will be deleted.' and 'Thumbnails of the scanned pages will be displayed before the file(s) are'. At the bottom, there is a 'Scan from:' dropdown set to 'Feeder - duplex (2-sided), book' and a 'Scan' button. Blue callout boxes with arrows point to these elements:

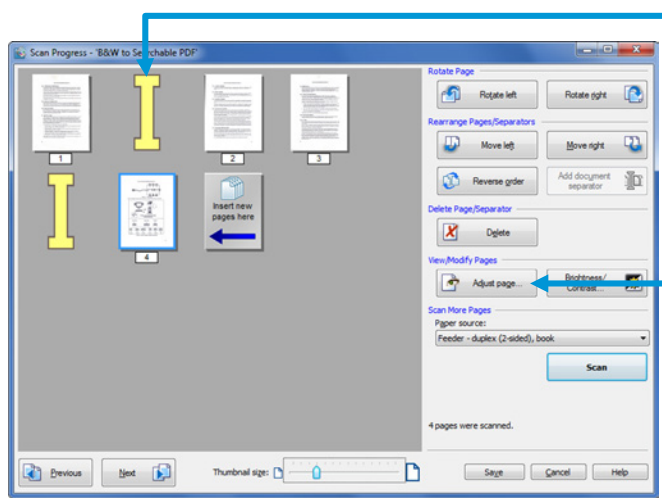
- Create a custom profile to get results you need** (points to 'Create new profile...')
- Adjust a profile or make a one-time change for ad-hoc jobs** (points to 'Edit profile...')
- Arrange your profile list so the most frequently used tasks are first** (points to 'Move profile up' and 'Move profile down')
- Load documents correctly every time with this helpful visual aid** (points to the preview area)
- Select a profile, then click Scan** (points to the 'Scan' button)

Preview your scans before saving

From the Scan Progress window, you can easily monitor the progress of your scans, and preview them before saving. You can make a variety of adjustments to get the results you want, including reordering, adding, or deleting pages, and even adding document separators.

TWAIN, ISIS and WIA support

HP TWAIN allows you to scan using TWAIN-compliant scan software from other (non-HP) vendors. Not all TWAIN-compliant software works in the same way, so consult the software documentation for details on how to acquire scans. The sheet-feed scanners also support ISIS and WIA drivers.

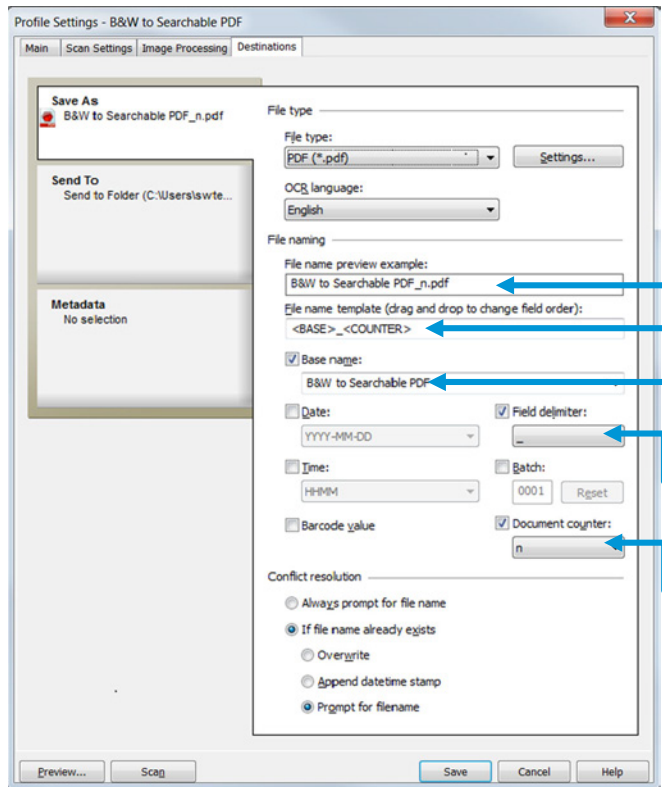


Document separators help keep your scan files organised

Make adjustments to individual scanned images

Enjoy maximum flexibility in naming output files

From the Edit profile, Destinations window you can easily customise the output file name exactly how you want it, with the ability to specify any base name and to reorder any of the output fields.



Preview file name results

Drag and drop fields to change their order

Use the current profile name or type a custom base name here

Choose from a variety of field delimiters

Increment file name by counter and/or with other variable fields, such as date and/or time

Create one-touch scanning efficiency

Work smarter and automate complex jobs with customised, one-touch settings. Quickly scan using your most-used settings—then save the settings as a job profile. Now you can consistently execute jobs at the touch of a button.

When your profile is selected on the LCD display, just press either the Scan Simplex or Scan Duplex scan button to execute the scan. These buttons will override any single- or two-sided setting in the profile. For example, even if a profile is set for two-sided scanning, pressing the Scan Simplex button will trigger a single-sided scan.

Preserve workspace with a compact device

The HP Scanjet Enterprise Flow 5000 s2 and s3 scanners fit in around the office—close at hand or out of the way. With a footprint about the size of a sheet of A4 or letter paper, it will be right at home, wherever you choose to put it. When the trays and extensions are folded, these sleek little scanners measure only 31 cm (12.2 inches) wide by 18.24 cm (7.18 inches) deep. Even with its trays fully open and extended, each model is only 31 cm (12.2 inches) wide by 56.6 cm (22.3 inches) deep.

Simplify deployments, installations, and event alerts

Save valuable time and effort with IT power tools. Built-in software simplifies broad deployment and installation—and makes management easier with event email notifications.

The remote deployment function allows all components of the scanner solution (device drivers, TWAIN, ISIS, SDSS, etc.) to be remotely installed via tools such as Microsoft System Center Configuration Manager—formerly Systems Management Server (SMS).

The event email function sends an email notification of maintenance events (scan count, roller maintenance, jam count, etc.). When a scanner maintenance event occurs, an email is sent to the configured email addresses to report the information about the maintenance event and other information about the scanner. In addition, the maintenance event information is added to a maintenance log that is maintained on the PC (or network folder location).

Page-by-page confidence



Help avoid missing pages and misfeeds. HP EveryPage³ delivers smoother paper handling for jobs of all kinds. Load stacks of documents—even mixed media sizes and types—and trust your scanner to do the rest.

Scan with confidence with HP EveryPage

HP EveryPage technologies include:

- Multiphase pick process
- Advanced separation
- Intelligent picking
- Mixed-stack handling
- Ultrasonic multi-feed detection

For more information, see the HP EveryPage white paper:

<http://h20195.www2.hp.com/V2/GetPDF.aspx/4AA4-4280ENW.pdf>

Have confidence that your documents are reliably scanned with HP EveryPage, a set of innovative technologies created to provide a dependable on-ramp to your digital workflow. These technologies provide reliable scanning of almost any document type, even mixed stacks of different paper sizes and weights. Whether you scan business documents or even ID cards, HP EveryPage delivers the peace of mind that comes with knowing that you'll never miss a page.

HP EveryPage delivers smoother paper handling for jobs of all kinds:

- Rely on simple, hassle-free scanning for nearly any kind of input, including mixed stacks of documents—no more time wasted sorting stacks into like-sizes and types.
- Minimise your downtime due to misfeeds and stoppages with precise, variable pick technologies that accommodate a variety of input types and sizes and deliver fast, efficient scanning.
- Enjoy peace of mind, knowing that all of your data has been captured—HP EveryPage employs innovative safeguards in the event of a misfeed or stoppage.

Ultrasonic multi-feed detection—how does it work?

One component of HP EveryPage is the ability to automatically detect multiple feeds to help ensure that all pages are scanned. Sound waves are used to verify that a single sheet has been separated from the stack for processing, helping eliminate the need to count the number of pages fed to make sure it matches the number of scanned pages.

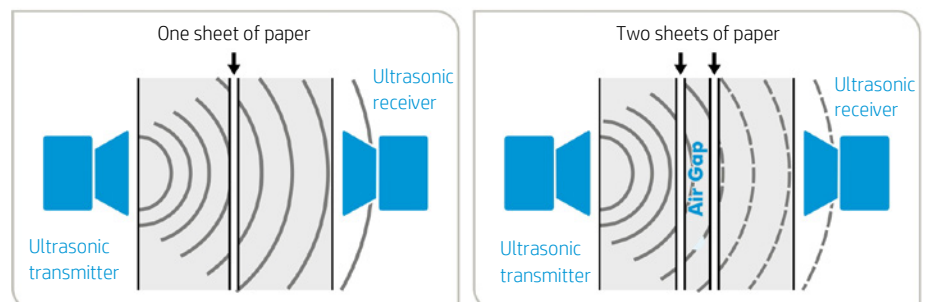
In the event that the ADF is unable to pick a page, or if multiple pages are pulled into the paper path, the feeding process stops and the device notifies you of the error. Pages that have already been scanned are stored in memory, which means that you don't have to restart your scan from the beginning.

Here it is in a nutshell:

- Ultrasonic waves are high-frequency (inaudible) sound.
- The sound waves pass easily through a single sheet of paper.
- If two sheets overlap, the small air gap between them reduces the signal at the receiver. The device senses that reduced signal, stops, and then alerts the user on the computer screen. (You can specify a region of the scan to be excluded from multi-feed detection. For example, a note or a piece of tape placed on the page.)



Ultrasonic multi-feed detection



Accurately capture the right content

With HP Smart Document Scan Software you can be sure you are capturing exactly what you need—no more and no less. Well-designed menus allow you to select from a wide range of scan settings. And with built-in features like automatic page size detection, automatic colour detection, auto orientation, auto straighten, auto blank page removal, and auto separation of documents by barcode, blank page, number of pages, or HP separator sheet, you can rest assured that your output will be just right.



50-sheet ADF

Breeze through sheet after sheet

Breeze through processes and heighten productivity with fast scan speeds and a 50-sheet ADF. With the s3 model, maintain peak performance with one-touch 300 dpi scan speeds of up to 60 ipm when scanning two-sided originals (up to 30 ppm single-sided). The s2 model delivers up to 50 ipm when scanning two-sided originals and up to 25 ppm single-sided.²

Scan both sides at once—at full speed

Automatically create two-sided scans—without slowing down. Scan two-sided pages in just one pass with the dual-head scanner.



2-sided scanning

Count on these workhorse scanners to deliver

Focus on your work with no worries about your scanner. With a robust design that can handle a recommended scan volume of up to 4,000 pages per day (s3 model) and up to 2,000 pages per day (s2 model), you can rest assured that these tough little scanners are built to keep intervention rates low so you can stay productive.

Enjoy peace of mind with legendary HP reliability

Prior to its introduction, a new HP Scanjet device undergoes rigorous HP testing to provide consistent, high-quality output. Tests are performed with a large sample of devices through each step of the design process, to be certain that the device measures up to HP standards. The result is a solid, reliable product that produces consistent, excellent scan quality over its entire life.

This scanner series includes a standard one-year limited hardware warranty with phone support. (Warranty may vary by country as required by law.) Additional warranty and service extension options are available. Go to hp.com/support to learn about HP world-class service and support options in your region.

HP services—protect your technology investment and stay productive

Expand and extend your standard warranty with HP Care Pack services. Our range of support services provides access to experts when you need them—so you can focus on what you care about.

With HP Care Pack Services you simply choose the level of support you need—no more, no less. A variety of options are available for the HP Scanjet Enterprise Flow 5000 s2/s3 Sheet-feed Scanners,⁷ including:

- Next business day exchange (3- to 5-year and 1-year post warranty options)
- Next business day exchange, with onsite service (2- to 5-year and 1-year post warranty options)
- 3-year standard exchange and 3-year return service
- Installation assistance
- 1-year post warranty phone assistance

For more details, see “Ordering information” on page 15. You can also select the HP Care Pack to best meet your needs at hp.com/go/cpc.



HP Care Pack

Conserve resources without sacrificing performance



You care about your impact on the environment. The environmental performance of products is largely determined at the design stage. HP's Design for the Environment initiative is driving improvements at every stage in the product lifecycle—helping reduce the amount of energy, paper, packaging, and materials used at HP and by our customers.

Conserve power without sacrificing performance

With its intelligent design, this scanner series can help you meet your energy goals, without sacrificing performance:

- **ENERGY STAR certified product**—HP equipment marked with the ENERGY STAR logo is certified to the U.S. Environmental Protection Agency's ENERGY STAR specifications for imaging equipment. Additional ENERGY STAR information is listed at hp.com/go/energystar. These energy-efficient devices are also EuP-compliant (European Energy-using Products Directive).
- **Registered EPEAT® Silver**—The Electronic Product Environmental Assessment Tool (EPEAT), a global registry for greener electronics, has registered the HP Scanjet Enterprise Flow 5000 s2/s3 series with a Silver rating. To be added to the EPEAT registry, an imaging device must meet at least 33 required environmental performance criteria. To achieve a Silver rating, a device must meet all the required criteria plus at least 50% of the optional criteria.
- **Auto-Off technology**—Spend energy wisely—you can set the scanner to turn off automatically when it's not needed, helping reduce energy costs.⁴
- **LED light source**—The LED light source requires no warm-up time, which helps to conserve energy.⁵



Auto-Off technology

Reduce clutter and waste—share documents digitally

No matter what size your organisation, scanning and storing documents digitally can help you make faster, better business decisions by capturing, managing, preserving, and delivering safeguarded data quickly and efficiently. Plus, you have the benefit of not having stacks of paper everywhere or requiring as much storage space.

Rest easy—no hazardous materials used

Like many HP products, this scanner series is RoHS-compliant and is free of mercury, lead, and other hazardous materials.

Technical specifications

	HP Scanjet Enterprise Flow 5000 s2 Sheet-feed Scanner	HP Scanjet Enterprise Flow 5000 s3 Sheet-feed Scanner
Product number	L2738A	L2751A
Scanner type and modes supported	Sheet-feed, single-pass two-sided scanning, colour, grayscale or black-and-white	
Scan technology	Contact Image Sensor (CIS) using LED light source, dual-head scanner	
Digital sending	Scan to folder (local or network); Scan to email; Scan to printer; Scan to FTP; Scan to web folder; Scan to cloud ¹ (Google Drive, SkyDrive, Box, Dropbox, Evernote, SugarSync, others through custom plug-ins); Scan to SharePoint, including SharePoint in Office 365, with column metadata	
Other advanced features	<p>HP EveryPage:³ multiphase pick process, advanced separation, intelligent picking, mixed-stack handling, ultrasonic multi-feed detection</p> <p>Auto page size detection; auto colour detection; auto orientation; auto straighten; auto blank page removal; crop to content; auto separation of documents by barcode, blank page, number of pages, or HP separator sheet</p> <p>Metadata embedded in PDF file, included in separate XML file, and/or uploaded as SharePoint column metadata</p> <p>Scanner maintenance events sent via email; Exclude specific region for multi-feed detection</p>	
Duty cycle (recommended)	2,000 pages per day, A4/letter	4,000 pages per day, A4/letter
Control panel	Two-line, 16-character LCD; Buttons (Power, Tools, Cancel, Back, OK, Up, Down, Single-sided, Two-sided)	
Scan speed² (colour, grey, or black-and-white)	Single-sided: up to 25 ppm at 300 dpi (A4/letter) Two-sided: up to 50 ipm at 300 dpi (A4/letter)	Single-sided: up to 30 ppm at 300 dpi (A4/letter) Two-sided: up to 60 ipm at 300 dpi (A4/letter)
Scan resolution	Hardware: up to 600 x 600 dpi; Optical: up to 600 dpi Output dpi settings: 75, 100, 150, 200, 240, 300, 400, 500, 600	
Bit depth and grayscale	48-bit (internal), 24-bit (external), 256 grayscale levels	
Compatibility	TWAIN (HP TWAIN version 2.1), ISIS, WIA	
File formats	PDF: image-only, searchable, MRC, PDF/A, encryption, password protection, digital signature TIFF: single-page, multi-page; compressed: G3, G4, LZW, JPEG; uncompressed DOC, RTF, WPD, XLS, DOCX and XLSX (via Readiris Pro), TXT, Unicode TXT, XML, XPS, HTML, OPF, JPG, BMP, PNG	
Scan input modes	Front-panel Scan button, scan application (such as HP Smart Document Scan Software)	
Memory	256 MB RAM	
Media specifications		
Input capacity	Up to 50 sheets	
Custom sizes	51 x 74 mm (2.0 x 2.9 in) to 216 x 3098 mm (8.5 x 122 in)	
Standard sizes	Letter, legal, A4, A5, A6, A8, long page support up to 3098 mm (122 in)	
Media weights	41 to 209 g/m ² (11 to 56 lb)	
Media types	Paper (plain, inkjet), envelopes, labels, cards (business, insurance, embossed, plastic ID, credit)	
Connectivity	1 Hi-Speed USB 2.0	
Compatible operating systems	Microsoft Windows [®] 8, Windows 7, Windows Vista [®] , Windows XP (Service Pack 3)	
Minimum system requirements	<p>Windows 8, Windows 7, Windows Vista: 2 GHz processor, 2 GB RAM, 177 MB free hard drive space (before installing only the minimally required driver and tools module), USB 2.0, 1024 x 768 SVGA monitor</p> <p>Windows XP, Service Pack 3: 1.6 GHz processor, 1 GB RAM, 177 MB free hard drive space (before installing only the minimally required driver and tools module), USB 2.0, 1024 x 768 SVGA monitor</p>	
Dimensions (width x depth x height)	<p>Minimum (with trays and extensions folded): 310 x 182.4 x 183.8 mm (12.2 x 7.18 x 7.24 in)</p> <p>Maximum (with trays and extensions fully extended): 310 x 565 x 361.5 mm (12.2 x 22.3 x 14.23 in)</p>	
Weight	4.82 kg (10.63 lb)	
What's in the box	HP Scanjet Enterprise Flow 5000 s2 or s3 Sheet-feed Scanner, Hi-Speed USB 2.0 cable, power supply and power cord, CD with scanning software, Bonus Pack DVD, Install Guide, ADF cleaning cloth	
Software included	Smart Document Scan Software (SDSS), Scanner Tools Utility (STU), PaperPort, Readiris Pro, Cardiris Pro	
Warranty	One-year limited hardware warranty, phone and Web support included. Warranty may vary by country as required by law. Go to hp.com/support to learn about HP world-class service and support options in your region.	

Environmental and power specifications

	HP Scanjet Enterprise Flow 5000 s2 Sheet-feed	HP Scanjet Enterprise Flow 5000 s3 Sheet-feed
Environmental ranges		
Temperatures	Recommended operating: 10 to 35° C (50 to 95° F); Storage: -40 to 65° C (-40 to 149° F)	
Relative humidity range	Operating range: 15 to 80% RH (non-condensing); Storage range: 0 to 90% RH (non-condensing)	
Acoustic sound power emissions	Scanning: 6.1 B(A)	
Power specifications⁸		
Power supply	ENERGY STAR® certified, EuP-compliant; registered EPEAT Silver	
Power consumption	Universal AC adapter; Input: 100 to 240 VAC (50/60 Hz), Output: 32 Vdc, 1.56 A (1560 mA)	
Energy-saving features	Active: 26.4 watts, Ready: 5.26 watts, Sleep: 1.43 watts, Off/Auto-off: 0.23 watts	
	HP Auto-Off technology, ⁴ LED light source (no warm-up time required)	
Environmental specifications	RoHS-compliant, mercury-free, lead-free	
Safety and regulatory compliance	IEC 60950-1:2005 +A1 and all applicable amendments; CSA/UL 60950-1, 2nd edition (2007); EN 60950-1:2006 +A11 +A1 +A12; EAC safety; Canada cUL CoC; China CCC; European Union CE; Kenya PVOC; Kuwait TER; Nigeria SON; Saudi Arabia SASO; South Africa NRCS; Taiwan BSMI; Ukraine safety approval; USA UL CoC; other safety approvals as required by individual countries	
Electromagnetic emission standard	Class B Emissions; CISPR 22:2008 (International); European Union EMC Directive 2004/108/EC, EN 55022:2010 (CE mark); China GB9254-2008 (CCC); Taiwan CNS13438:2006 (BSMI); USA CFR47 Part 15, Subpart B (FCC); ICES-003:2012 Issue 5 (Canada); Australia C-tick (includes New Zealand); KN 22 and Korea KCC; EAC EMC Certificate; Ukraine EMC approval; EN 61000-3-2:2006 (harmonics); EN 61000-3-3:2008 (flicker); Immunity CISPR 24:2010, EN 50024:2010; other EMC approvals as required by individual countries	

Ordering information

Use accessories and supplies specifically designed for the MFP to help provide efficient performance. To order the accessories and supplies listed here, go to hp.com. To contact HP by country, please visit hp.com/country/us/en/cs/contact-hp/contact.html.

If you don't have access to the Internet, contact your qualified HP dealer, or call HP (U.S.) at (800) 282-6672.

Scanner	HP Scanjet Enterprise Flow 5000 s2 Sheet-feed Scanner	L2738A
	HP Scanjet Enterprise Flow 5000 s3 Sheet-feed Scanner	L2751A
HP Care Pack Services⁷	HP 3 year Next business day Exchange Scanjet 5000s2/s3 Hardware Service	UH370A/E
Select the right HP Care Pack Service for your scanner at hp.com/go/cpc	HP 3 year Return Scanjet 5000s2/s3 Hardware Service	UH369E
	HP 1 year Post Warranty Phone Assist Scanjet 5000s2/s3 Service	HC127PE
	HP 3 year Standard Exchange Scanjet 5000s2/s3 Hardware Service	UK001A/E
	HP 2 year Next business day Onsite Exchange Scanjet 5000s2/s3 Hardware Service	UH371E
	HP 3 year Next business day Onsite Exchange Scanjet 5000s2/s3 Hardware Service	UH372A/E
	HP Installation Scanjet 5000s2/s3 Service	UG837E
	HP 1 year Post Warranty Standard Exchange Scanjet 5000s2/s3 Hardware Service	UK513PE
	HP 1 year Post Warranty Next business day Exchange Scanjet 5000s2/s3 Hardware Service	UH373PE
	HP 1 year Post Warranty Next business day Onsite Exchange Scanjet 5000s2/s3 Hardware Service	UH374PE
	HP 4 year Next business day Exchange Scanjet 5000s2/s3 Service	UOMF6E
	HP 5 year Next business day Exchange Scanjet 5000s2/s3 Service	UOMF5E
	HP 4 year Next business day Onsite Exchange Scanjet 5000s2/s3 Hardware Support	UOMF7
	HP 5 year Next business day Onsite Exchange Scanjet 5000s2/s3 Hardware Support	UOQNO
Solutions	hp.com/go/qsc	
Supplies	ADF Roller Replacement Kit	L2740A
	ADF Cleaning Cloth, 10 pack	C9943B

Notes

¹ Requires an Internet connection to the scanner through a PC and HP Smart Document Scan Software and driver installation.

² Scan speeds of up to 30 ppm/60 ipm measured at 300 dpi (black-and-white, grayscale, and colour). Actual processing speeds may vary depending on scan resolution, network conditions, computer performance, and application.

³ HP EveryPage is referred to as HP Precision Feed on HP Scanjet devices introduced prior to May 2013.

⁴ HP Auto-Off technology capabilities subject to device and settings.

⁵ When compared with traditional fluorescent bulbs.

⁶ Services require registration. App availability varies by country, language and agreements. For details, visit hpconnected.com.

⁷ Service levels and response times for HP Care Pack Services may vary depending on your geographic location. Service starts on date of hardware purchase. Restrictions and limitations apply. For details, visit hp.com/go/cpc.

⁸ Power requirements are based on the country/region where the scanner is sold. Do not convert operating voltages. This will damage the device and void the product warranty.

Sign up for updates

hp.com/go/getupdated



Share with colleagues



Rate this document

© Copyright 2013, 2015 HP Development Company, L.P. The information contained herein is subject to change without notice. The only warranties for HP products and services are set forth in the express warranty statements accompanying such products and services. Nothing herein should be construed as constituting an additional warranty. HP shall not be liable for technical or editorial errors or omissions contained herein.

ENERGY STAR is a registered trademark owned by the U.S. Environmental Protection Agency. © 2012 Google Inc. All rights reserved. Google Drive is a trademark of Google, Inc. Microsoft, Windows, Windows XP, and Windows Vista are trademarks of the Microsoft Group of Companies.

4AA4-7664EEAP, June 2015, Rev. 3

