

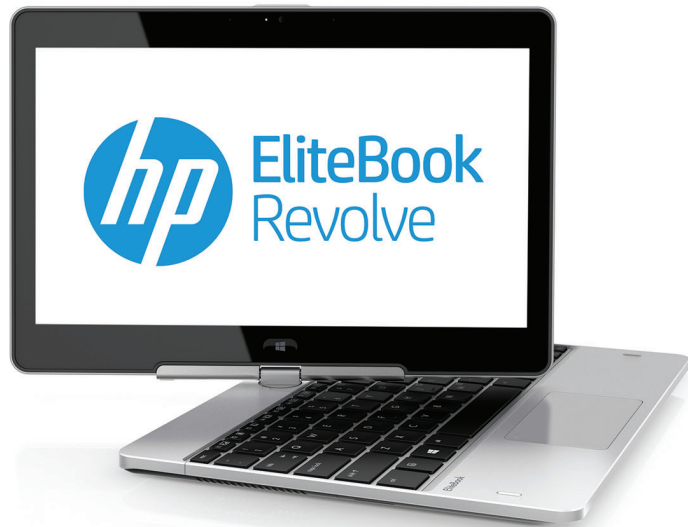
## Datasheet

# HP EliteBook Revolve 810 G2 Tablet



**An ultra-thin notebook that rotates to become a tablet in an instant.**

Work doesn't always adapt to you. So we designed an HP EliteBook that does. It's an ultra-thin notebook that rotates to become a tablet in an instant. The EliteBook Revolve bends over backwards to help you get more done.



## HP recommends Windows.

### Designed for durability

- This ultra-thin full-performance EliteBook converts to a tablet. It also is designed to pass MIL-STD 810G tests<sup>1</sup> and features a magnesium chassis and spill resistant keyboard.

### No compromise performance

- Boost your productivity with Windows 8.1,<sup>2</sup> the latest 4th generation Intel® Core™ i3/i5/i7 ULT processor<sup>3</sup> technology, and a solid-state drive (SSD). Get connected with optional 4G LTE WWAN,<sup>4</sup> HP ePrint,<sup>5</sup> and enterprise-class docking.

### Heavy security, efficiently managed

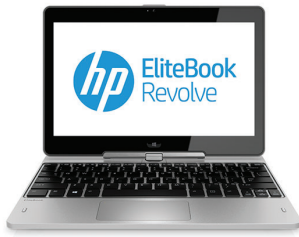
- Security and manageability tools for enterprise and SMB that ease the burden on IT, including HP Sure Start<sup>6</sup> self-healing BIOS.

### Even more

- More tools so you stay productive

# HP EliteBook Revolve 810 G2 Tablet Specifications Table

**HP recommends Windows.**



<b>Available Operating System</b>	Windows 8.1 Pro 64 <sup>1</sup> Windows 8.1 64 <sup>1</sup> Windows 7 Professional 64 (available through downgrade rights from Windows 8.1 Pro 64) <sup>2</sup> Windows 7 Professional 64 <sup>3</sup> FreeDOS
<b>Available Processors</b>	Intel® Core™ i7-4600U with Intel HD Graphics 4400 (2.1 GHz, up to 3.3 GHz with Intel Turbo Boost Technology, 4 MB cache, 2 cores); Intel® Core™ i7-4510U with Intel HD Graphics 4400 (2 GHz, up to 3.1 GHz with Intel Turbo Boost Technology, 4 MB cache, 2 cores); Intel® Core™ i5-4310U with Intel HD Graphics 4400 (2 GHz, Up to 3 GHz with Intel Turbo Boost Technology, 3 MB cache, 2 cores); Intel® Core™ i5-4300U with Intel HD Graphics 4400 (1.9 GHz, up to 2.9 GHz with Intel Turbo Boost Technology, 3 MB cache, 2 cores); Intel® Core™ i5-4210U with Intel HD Graphics 4400 (1.7 GHz, up to 2.7 GHz with Intel Turbo Boost Technology, 3 MB cache, 2 cores); Intel® Core™ i5-4200U with Intel HD Graphics 4400 (1.6 GHz, up to 2.6 GHz with Intel Turbo Boost Technology, 3 MB cache, 2 cores); Intel® Core™ i3-4030U with Intel HD Graphics 4400 (1.9 GHz, 3 MB cache, 2 cores) <sup>4</sup>
<b>Chipset</b>	Chipset is integrated with processor
<b>Memory</b>	4 GB 1600 MHz DDR3L SDRAM (onboard); 4 GB 1600 MHz DDR3L SDRAM (optional); 8 GB 1600 MHz DDR3L SDRAM (optional) <sup>5</sup> (4 GB DDR3L onboard, one SODIMM slot available; upgradeable to maximum of 12 GB)
<b>Internal Storage</b>	128 GB M.2 SSD; 180 GB M.2 SSD; 256 GB M.2 SSD; 256 GB M.2 SED SSD <sup>6</sup>
<b>Display</b>	29,46 cm (11.6") diagonal LED-backlit anti-glare HD UWVA Touch (1366 x 768) <sup>12</sup>
<b>Available Graphics</b>	Intel® HD Graphics 4400 <sup>12</sup>
<b>Audio</b>	DTS Studio Sound; Integrated stereo speakers; Integrated microphone (dual-microphone array); Headphone/microphone combo jack; Buttons for volume up and down
<b>Wireless Technologies</b>	HP hs3110 HSPA+ Mobile Broadband; HP lt4112 LTE/HSPA+ Mobile Broadband; Intel Dual Band Wireless-AC 7260 802.11ac WiDi (2x2) WiFi and Bluetooth® 4.0 Combo; Intel Dual Band Wireless-N 7260AN 802.11a/b/g/n WiDi (2x2) WiFi and Bluetooth® 4.0 Combo; Intel Dual Band Wireless-N 7260NB 802.11a/b/g/n WiDi (2x2) WiFi <sup>7,8,9,10</sup>
<b>Expansion Slots</b>	1 microSD
<b>Ports and Connectors</b>	1 USB 3.0; 1 USB 3.0 charging; 1 DisplayPort; 1 stereo headphone/microphone combo; 1 docking connector; 1 RJ-45; 1 power connector
<b>Webcam</b>	Integrated 720p HD webcam <sup>12</sup>
<b>Security Management</b>	HP Client Security Suite (requires Windows) includes: HP Credential Manager; HP Password Manager; HP File Sanitizer; HP Device Access Manager with Just In Time Authentication; HP BIOS with Sure Start 2.0; HP Secure Erase; HP Trust Circles; Microsoft Security Essentials (Windows 7) & Microsoft Defender (Windows 8.1); HP SpareKey; Absolute Data Protect; TPM Embedded Security Chip 1.2; Security lock slot (lock sold separately) <sup>16,17,18,19,20,21,22</sup>
<b>Dimensions</b>	8.34 x 11.22 x 0.80 in 21.2 x 28.5 x 2.22 cm
<b>Weight</b>	Starting at 3.08 lb Starting at 1.4 kg (Weight will vary by configuration.)
<b>Power</b>	External HP 45W Slim Smart AC Adapter 6-cell Polymer Long Life (44 Whr)
<b>Sensors</b>	Accelerometer; Ambient light sensor; Compass; Near Field Communication (NFC) <sup>22</sup>
<b>Expansion Solutions</b>	HP 2013 UltraSlim Docking Station
<b>Warranty</b>	3-year limited warranty (upgrades available, sold separately)

## HP EliteBook Revolve 810 G2 Tablet

**HP recommends Windows.**

### Accessories and services (not included)

#### HP 2013 UltraSlim Docking Station



Quickly and easily expand your display, network, and device connectivity to customize an always-ready workspace with the HP 2013 UltraSlim Docking Station, a simple one-click, slide-in side dock for select ultraslim HP EliteBook Notebook PCs.

**Product number: D9Y32AA**

#### HP UltralSlim Keyed Cable Lock



Secure your HP Ultrabook™ or laptop PC quickly and easily with the HP UltralSlim Keyed Cable Lock.

**Product number: H4D73AA**

#### HP Business Slim Top Load Case



The HP Business Slim Top Load Case is a compact, stylish, and durable case designed for the sleek and lightweight HP slim profile business notebooks (up to 14.1 diagonal inch screens).

**Product number: H5M91AA**

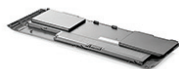
#### HP Touch to Pair Mouse



Get additional flexibility and functionality and keep your workspace clutter-free with the world's first near field communication (NFC) wireless mouse that instantly pairs and connects to your Bluetooth®-enabled tablet or Ultrabook™.\*

**Product number: H6E52AA**

#### HP OD06XL Long Life Notebook Battery



The HP OD06XL Long Life Battery is an additional or replacement battery for the HP EliteBook Revolve Tablet PC.

**Product number: H6L25AA**

#### HP 3-year Next business day Onsite Notebook Only Service



Receive 3 years of next business day onsite repair from an HP-qualified technician for your computing device, if the issue cannot be solved remotely

**Product number:**

Learn more at  
[www.hp.eu/hpoptions](http://www.hp.eu/hpoptions)

# HP EliteBook Revolve 810 G2 Tablet

**HP recommends Windows.**

## Messaging Footnotes

- <sup>1</sup> MIL-STD testing is pending and is not intended to demonstrate fitness for U.S. Department of Defense contract requirements or for military use. Test results are not a guarantee of future performance under these test conditions.
- <sup>2</sup> Not all features are available in all editions of Windows 8.1. Systems may require upgraded and/or separately purchased hardware, drivers and/or software to take full advantage of Windows 8.1 functionality. See <http://www.microsoft.com>.
- <sup>3</sup> Multi-Core is designed to improve performance of certain software products. Not all customers or software applications will necessarily benefit from use of this technology. 64-bit computing on Intel® architecture requires a computer system with a processor, chipset, BIOS, operating system, device drivers, and applications enabled for Intel® 64 architecture. Processors will not operate (including 32-bit operation) without an Intel® 64 architecture-enabled BIOS. Performance will vary depending on your hardware and software configurations. Intel's numbering is not a measurement of higher performance.
- <sup>4</sup> WWAN is an optional, add-on feature. WWAN use requires separately purchased service contract. Check with service provider for coverage and availability in your area. Connection speeds will vary due to location, environment, network conditions, and other factors. 4G LTE is not available in all regions and requires Windows.
- <sup>5</sup> Requires an Internet connection to HP web-enabled printer and HP ePrint account registration (for a list of eligible printers, supported documents and image types and other HP ePrint details, see [hpconnected.com](http://hpconnected.com)). Mobile devices require Internet connection and email capability. May require wireless access point or optional broadband module. Broadband use requires separately purchased service contract. Check with service provider for coverage and availability in your area. Separately purchased data plans or usage fees may apply. Print times and connection speeds may vary.
- <sup>6</sup> HP Sure Start is available only on EliteBook 800 and Workstation ZBook series products.
- <sup>7</sup> HD content required to view HD images.
- <sup>8</sup> Weight may vary based on configuration.
- <sup>9</sup> Requires a compatible Intel® Core processor, Intel® Rapid Start software and BIOS update, and optional Solid State Drive (SSD) or mSATA flash cache module. Depending on system configuration, results may vary.
- <sup>10</sup> Based on PCMark testing. Depending on system configuration, your results may vary.

## Technical specifications disclaimers

- <sup>1</sup> Not all features are available in all editions of Windows 8.1. Systems may require upgraded and/or separately purchased hardware, drivers and/or software to take full advantage of Windows 8.1 functionality. See <http://www.microsoft.com>.
- <sup>2</sup> This system is preinstalled with Windows® 7 Pro software and also comes with a license and media for Windows 8.1 Pro software. You may only use one version of the Windows software at a time. Switching between versions will require you to uninstall one version and install the other version. You must back up all data (files, photos, etc.) before uninstalling and installing operating systems to avoid loss of your data.
- <sup>3</sup> This system may require upgraded and/or separately purchased hardware to take full advantage of Windows 7 functionality. Not all features are available in all editions of Windows 7. See <http://windows.microsoft.com/en-us/windows7/products/home> for details.
- <sup>4</sup> Multi-Core is designed to improve performance of certain software products. Not all customers or software applications will necessarily benefit from use of this technology. 64-bit computing on Intel® architecture requires a computer system with a processor, chipset, BIOS, operating system, device drivers, and applications enabled for Intel® 64 architecture. Processors will not operate (including 32-bit operation) without an Intel® 64 architecture-enabled BIOS. Performance will vary depending on your hardware and software configurations. Intel's numbering is not a measurement of higher performance.
- <sup>5</sup> Maximum memory capacities assume Windows 64-bit operating systems or Linux. With Windows 32-bit operating systems, memory above 3 GB may not all be available due to system resource requirements.
- <sup>6</sup> For hard drives and solid state drives, GB = 1 billion bytes. TB = 1 trillion bytes. Actual formatted capacity is less. Up to 16GB (for Windows 7) of system and up to 30 GB (for Windows 8.1) disk is reserved for system recovery software.
- <sup>7</sup> For 802.11, wireless access point and Internet service is required and is not included. Availability of public wireless access points limited.
- <sup>8</sup> WWAN is an optional feature. WWAN add-on feature after purchase is planned to be available in March 2014.
- <sup>9</sup> Bluetooth™ 4.0 is available on Windows 8.1 operating system only.
- <sup>10</sup> 802.11 + Bluetooth combos sold separately or as an optional feature.
- <sup>11</sup> Mobile Broadband sold separately or as an optional feature.
- <sup>12</sup> Requires an Internet connection to HP web-enabled printer and HP ePrint account registration (for a list of eligible printers, supported documents and image types and other HP ePrint details, see [www.hp.com/go/eprintcenter](http://www.hp.com/go/eprintcenter)). Requires optional broadband module. Broadband use requires separately purchased service contract. Check with service provider for coverage and availability in your area. Separately purchased data plans or usage fees may apply. Print times and connection speeds may vary.
- <sup>13</sup> Internet access required.
- <sup>14</sup> Power calculations and cost calculations are estimates. Results will vary based on variables, which include information provided by the user, time PC is in different power states (on, standby, hibernate, off), time PC is on battery or AC, hardware configuration, variable electricity rates and utilities provider. HP advises customers to use information reported by HP Power Assistant for reference only and to validate impact in their environment. Environmental calculations were based on U.S. EPA eGrid 2007 data found at [www.epa.gov/egrid/](http://www.epa.gov/egrid/). Regional results will vary. Requires Microsoft Windows.
- <sup>15</sup> Drive Encryption requires Windows. Data is protected prior to Drive Encryption login. Turning the PC off or into hibernate logs out of Drive Encryption and prevents data access.
- <sup>16</sup> Password Manager requires Internet Explorer or Chrome. Some websites and applications may not be supported. User may need to enable or allow the add-on / extension in the internet browser.
- <sup>17</sup> File Sanitizer is for the use cases outlined in the DOD 5220.22-M Supplement. Does not support Solid State Drives (SSDs). Initial setup required. Web history deleted only in Internet Explorer and Firefox browsers and must be user enabled. With Windows 8.1, user must turn off Enhanced Protection in IE11 for shred on browser close feature.
- <sup>18</sup> Secure Erase is for the methods outlined in the National Institute of Standards and Technology Special Publication 800-88. Supported on ElitePad 900 G1 with BIOS version F.03 and higher.
- <sup>19</sup> HP Trust Circles Standard, when included, allows up to 5 Trust Circles with up to 5 contacts in each Trust Circle. Optional Trust Circles Professional required for unrestricted number of Trust Circles and members contacts. Trust Circles Reader is available to allow contact to participate in an invited Trust Circle. Requires Windows. Available at <http://hptc.cryptomill.com>
- <sup>20</sup> Products with Windows 8.1 include a 4 year license of Absolute Data Protect to locate your device, lock and prevent unauthorized access and remotely delete personal data. License must be activated by customer. See <http://www.absolute.com/landing/2012/computrace-hp> for complete details. Absolute Data Protect agent is shipped turned off, and must be activated by customers. Service may be limited, check with Absolute for availability outside the U.S. The optional subscription service of Absolute Recovery Guarantee is a limited warranty. Certain conditions apply. For full details visit: <http://www.absolute.com/company/legal/agreements/computrace-agreement>. If Data Delete is utilized, the Recovery Guarantee payment is null and void. In order to use the Data Delete service, customers must first sign a Pre-Authorization Agreement and either create a PIN or purchase one or more RSA SecurID tokens from Absolute Software.
- <sup>21</sup> NFC software is not included and is sold separately. Internet access required.

## Learn more at

[www.hp.eu/notebooks](http://www.hp.eu/notebooks)

## Engage HP Financial Services

Explore monthly payment options and technology refresh plans that can provide more flexibility to help you meet your IT goals. More information on [www.hp.com/go/hpfs](http://www.hp.com/go/hpfs).

## Sign up for updates

[www.hp.com/go/getupdated](http://www.hp.com/go/getupdated)

© Copyright 2013, 2014, 2015. Hewlett-Packard Development Company, L.P. The information contained herein is subject to change without notice. The only warranties for HP products and services are set forth in the express warranty statements accompanying such products and services. Nothing herein should be construed as constituting an additional warranty. HP shall not be liable for technical or editorial errors or omissions contained herein. Not all features are available in all editions of Windows 8.1. Systems may require upgraded and/or separately purchased hardware to take full advantage of Windows 8.1 functionality. See <http://www.microsoft.com/windows> for details.

Microsoft, Windows, and the Windows Logo are U.S. registered trademarks of Microsoft Corporation. Bluetooth is a trademark of its proprietor and used by Hewlett-Packard Company under license. Intel and Core are trademarks or registered trademarks of Intel Corporation or its subsidiaries in the U.S. and other countries. All other trademarks are the property of their respective owners.

4AA5-0116EEE, June 2015

