

Solution brief

HP ThinPro OS

The out-of-the-box OS for HP Thin Clients



Support multiple, concurrent sessions with HP ThinPro - a feature-rich, flexible, Linux-based operating system.

Industry leadership with Linux and HP

The HP ThinPro operating system is based on the standard Linux kernel. With wide support from the Linux community, businesses can continue to drive high-performance, virtualized environments on HP thin clients.

IT-friendly system flexibility

Shorten your deployment and setup time with the HP ThinPro operating system, which automatically detects, configures and updates your environment with the latest network changes.

HP ThinPro supports Open SSH, which helps ensure a secure connection to your backend server every time. Plug-and-deploy with FreeRDP, Citrix ICA, View and TeemTalk - key applications included with HP ThinPro to get you up and running, fast.

Switch to the connection of your choice, whether RDP or ICA, any time without having to change your thin client hardware. The HP ThinPro image can be saved and restored whether it's customized or shipped from the factory.

Broad virtualization software support

Support all leading backend environments, including Citrix with HDX, VMware with PCoIP, Microsoft® and TeemTalk for terminal emulation.

Simplified user settings

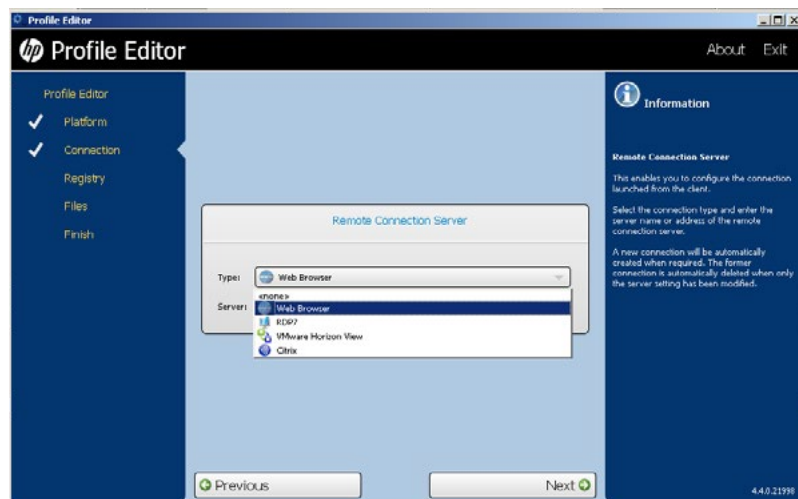
Quickly grant access and define user privileges, restrictions and services in seconds. The local, simplified graphical user interface guides the end-user through the necessary steps to connect their client to your network.

Plug-and-deploy with HP-exclusive software

Quickly and easily pre-configure your thin clients with HP Smart Client Services - a server-based application available with the HP ThinPro OS. Simply connect your client to the network. HP Smart Client Services will automatically configure and connect to your host environment. From there, administrators can apply the settings of their choice to many clients at once.

Experience HP innovation in full lifecycle management with HP Device Manager. View and manage all your HP thin clients from anywhere through a network connection. Deliver add-ons, drivers, and Service Pack updates across your entire install base with just a few clicks.

Figure 1 and Figure 2: Profile Editor; device configuration screens



Status	Hardware	Device ID	IP Address	Agent Version	Device Type	Device User
OK	DM 30-Y6 1	012C7AF21010C	192.168.0.7	4.5.3000.1705	HP Smart Client	DM 30-Y6 1
OK	01-00-11-00-00-00	01-00-11-00-00-00	192.168.1.26	4.5.3000.1	Novell	DM 30-Y6 1
OK	01-00-11-00-00-00	01-00-11-00-00-00	192.168.1.26	4.5.3000.1	Novell	DM 30-Y6 1
OK	01-00-11-00-00-00	01-00-11-00-00-00	192.168.1.26	4.5.3000.1	Novell	DM 30-Y6 1
OK	01-00-11-00-00-00	01-00-11-00-00-00	192.168.1.26	4.5.3000.1	Novell	DM 30-Y6 1
OK	01-00-11-00-00-00	01-00-11-00-00-00	192.168.1.26	4.5.3000.1	Novell	DM 30-Y6 1
OK	01-00-11-00-00-00	01-00-11-00-00-00	192.168.1.26	4.5.3000.1	Novell	DM 30-Y6 1
OK	01-00-11-00-00-00	01-00-11-00-00-00	192.168.1.26	4.5.3000.1	Novell	DM 30-Y6 1
OK	01-00-11-00-00-00	01-00-11-00-00-00	192.168.1.26	4.5.3000.1	Novell	DM 30-Y6 1
OK	01-00-11-00-00-00	01-00-11-00-00-00	192.168.1.26	4.5.3000.1	Novell	DM 30-Y6 1
OK	01-00-11-00-00-00	01-00-11-00-00-00	192.168.1.26	4.5.3000.1	Novell	DM 30-Y6 1
OK	01-00-11-00-00-00	01-00-11-00-00-00	192.168.1.26	4.5.3000.1	Novell	DM 30-Y6 1
OK	01-00-11-00-00-00	01-00-11-00-00-00	192.168.1.26	4.5.3000.1	Novell	DM 30-Y6 1
OK	01-00-11-00-00-00	01-00-11-00-00-00	192.168.1.26	4.5.3000.1	Novell	DM 30-Y6 1
OK	01-00-11-00-00-00	01-00-11-00-00-00	192.168.1.26	4.5.3000.1	Novell	DM 30-Y6 1
OK	01-00-11-00-00-00	01-00-11-00-00-00	192.168.1.26	4.5.3000.1	Novell	DM 30-Y6 1
OK	01-00-11-00-00-00	01-00-11-00-00-00	192.168.1.26	4.5.3000.1	Novell	DM 30-Y6 1
OK	01-00-11-00-00-00	01-00-11-00-00-00	192.168.1.26	4.5.3000.1	Novell	DM 30-Y6 1
OK	01-00-11-00-00-00	01-00-11-00-00-00	192.168.1.26	4.5.3000.1	Novell	DM 30-Y6 1

Sign up for updates
hp.com/go/getupdated







Share with colleagues Rate this document

© Copyright 2014 Hewlett-Packard Development Company, L.P. The information contained herein is subject to change without notice. The only warranties for HP products and services are set forth in the express warranty statements accompanying such products and services. Nothing herein should be construed as constituting an additional warranty. HP shall not be liable for technical or editorial errors or omissions contained herein.

Microsoft® is a U.S. registered trademark of the Microsoft group of companies; Citrix® is a registered trademark of Citrix in the United States and/or other countries; VMware is a registered trademark or trademark of VMware, Inc. in the United States and/or other jurisdictions.

