

HP EliteBook Revolve 810 G3 Tablet



Business is constantly changing, adjust accordingly

Work with the enterprise-class EliteBook built to adapt to your needs. The HP EliteBook Revolve 810 transforms to five usage modes all backed by Elite-class durability, performance, security, and manageability for work in the office or on the road.



- Windows 8.1¹
- 29,46 cm (11.6") diagonal display

Designed for durability

- HP's ultra-thin full-performance EliteBook Ultrabook™² that converts to a tablet and is designed to pass MIL-STD 810G tests³ and features a magnesium chassis and spill resistant keyboard.

Bend over backwards flexibility

- Take advantage of built-in flexibility with your choice of input from the optional HP Executive Pen,⁴ touchscreen, or keyboard to work with the five usage modes available on the HP EliteBook Revolve 810.

No-compromise performance

- Boost your productivity with Windows 8.1,¹ the latest 5th generation Intel® Core™ i3/i5/i7 ULT processor⁵ technology, long battery life, enterprise-class docking and high performance storage options.

Heavy security, effectively managed

- Get security and manageability tools that ease the burden on IT with optional Intel® vPro™⁶ and a comprehensive suite of tools from HP including HP BIOSphere,⁷ HP Sure Start, and HP Touchpoint Manager.⁸

Featuring

- Work with confidence using the heavily tested HP EliteBook Revolve 810.
- Premium components like a magnesium chassis and spill-resistant backlit keyboard allow you to focus on work.
- Help improve your productivity with the optional HP Executive Tablet Pen⁴ with enhanced responsive touch and pinpoint control features.
- Work in more places with multiple connectivity options to help you stay connected on-the-go.
- HP Sure Start detects corruption and self-heals the BIOS.
- Manage data, security, and devices from a single cloud-based solution with HP Touchpoint Manager.⁸
- Take advantage of HP's warranty and Global Series support.
- Simplify technical support with Helpdesk by HP Care Services. Rely on cost-effective expertise that's available 24x7, covering multiple brands, devices and operating systems.⁹
- Help maximize cash flow with a monthly subscription to use best-in-class hardware and services — plus, it allows you to replace your PC with a new one every three years.¹⁰

HP EliteBook Revolve 810 G3 Tablet Specifications Table



Available Operating System	Windows 10 Pro 64 ¹ Windows 8.1 Pro for Education 64 ¹ Windows 7 Professional 64 (available through downgrade rights from Windows 10 Pro) ² Windows 8.1 Pro 64 ¹ Windows 8.1 64 ¹ Windows 7 Professional 64 (available through downgrade rights from Windows 8.1 Pro) ²⁰ Windows 7 Professional 64 ¹ FreeDOS ¹
Available Processors	Intel® Core™ i7-5600U with Intel HD Graphics 5500 (2.6 GHz, up to 3.2 GHz with Intel Turbo Boost Technology, 4 MB cache, 2 cores); Intel® Core™ i7-5500U with Intel HD Graphics 5500 (2.4 GHz, up to 3 GHz with Intel Turbo Boost Technology, 4 MB cache, 2 cores); Intel® Core™ i5-5300U with Intel HD Graphics 5500 (2.3 GHz, up to 2.9 GHz with Intel Turbo Boost Technology, 3 MB cache, 2 cores); Intel® Core™ i5-5200U with Intel HD Graphics 5500 (2.2 GHz, up to 2.7 GHz with Intel Turbo Boost Technology, 3 MB cache, 2 cores); Intel® Core™ i3-5010U with Intel HD Graphics 5500 (2.1 GHz, 3 MB cache, 2 cores) ¹⁸
Chipset	Chipset is integrated with processor
Memory	4 GB 1600 MHz DDR3L SDRAM (onboard); 4 GB 1600 MHz DDR3L SDRAM (optional); 8 GB 1600 MHz DDR3L SDRAM (optional) (4 GB memory onboard, may add additional: 4 GB (8 GB total) or 8 GB (12 GB total))
Internal Storage	128 GB M.2 SSD; 180 GB M.2 SSD; 256 GB M.2 SSD; 512 GB M.2 SSD; 180 GB M.2 SE SSD; 256 GB M.2 SE SSD ³
Display	29,46 cm (11.6") diagonal HD UWVA multitouch-enabled ultra slim LED-backlit (1366 x 768) ⁸
Available Graphics	Intel® HD Graphics 5500 ⁸
Audio	DTS Studio Sound™; Integrated stereo speakers; Integrated microphone (dual-microphone array); Headphone/microphone combo jack; Buttons for volume up and down
Keyboard	Full size, spill-resistant backlit keyboard
Wireless Technologies	HP hs3110 HSPA+ Mobile Broadband; HP lt4112 LTE/HSPA+ Qualcomm® Gobi™ 4G Mobile Broadband; Intel Dual Band Wireless-N 7265AN 802.11a/b/g/n WiDi (2x2) WiFi and Bluetooth® 4.0 Combo; Intel Dual Band Wireless-AC 7265 802.11a/b/g/b/ac WiDi (2x2) WiFi and Bluetooth® 4.0 Combo ^{4,5,6,7}
Expansion Slots	1 microSD
Ports and Connectors	1 USB 3.0; 1 USB 3.0 charging; 1 DisplayPort 1.2; 1 headphone/microphone combo; 1 side docking connector; 1 RJ-45; 1 AC power
Webcam	720p HD camera ⁸
Security Management	HP Client Security Suite: HP Credential Manager, HP Password Manager; HP File Sanitizer; HP Device Access Manager with Just in Time Authentication; HP BIOS with Sure Start 2.0; HP Secure Erase; HP Trust Circles; Microsoft Security Essentials (models with Windows 7 only); Microsoft Defender (models with Windows 8.1); HP SpareKey; Absolute Data Protect; Absolute Persistence Module (models with Windows 7 and Windows 8.1); TPM Embedded Security Chip 1.2; Security lock slot (lock sold separately); HP Touchpoint Manager ^{9,10,11,12,13,14,15}
Dimensions	285 x 212 x 22.2 mm
Weight	Starting at 1.4 kg (Weight will vary by configuration.)
Power	45 W Smart AC adapter 6 cell, long life 44 WHr Li-ion polymer
Sensors	Gyro; Accelerometer; Compass; Ambient light sensor; Proximity; Near Field Communication (NFC)
Energy Efficiency Compliance	ENERGY STAR® certified
Expansion Solutions	3-year limited warranty (optional Care Packs available, sold separately)
Accessories	Active pen (select configurations)
Warranty	3-year limited warranty (optional Care Packs available, sold separately)

HP EliteBook Revolve 810 G3 Tablet

Accessories and services (not included)

HP 2013 UltraSlim Docking Station



Quickly and easily expand your display, network, and device connectivity to customize an always-ready workspace with the HP 2013 UltraSlim Docking Station, a simple one-click, slide-in side dock for select ultraslim HP EliteBook Notebook PCs.

Product number: D9Y32AA

HP UltralSlim Keyed Cable Lock



Secure your HP Ultrabook™ or laptop PC quickly and easily with the HP UltralSlim Keyed Cable Lock.

Product number: H4D73AA

HP Business Slim Top Load Case



The HP Business Slim Top Load Case is a compact, stylish, and durable case designed for the sleek and lightweight HP slim profile business notebooks (up to 14.1 diagonal inch screens).

Product number: H5M91AA

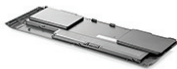
HP Touch to Pair Mouse



Get additional flexibility and functionality and keep your workspace clutter-free with the world's first near field communication (NFC) wireless mouse that instantly pairs and connects to your Bluetooth®-enabled tablet or Ultrabook™.*

Product number: H6E52AA

HP OD06XL Long Life Notebook Battery



The HP OD06XL Long Life Battery is an additional or replacement battery for the HP EliteBook Revolve Tablet PC.

Product number: H6L25AA

HP 65W Smart Travel AC Adapter



AC power adapters from HP power your notebook and charge the internal battery simultaneously. These adapters provide you with the ability to power your notebook when away from the office or on the road. The HP 65W Slim Travel Adapter is perfect for international travelers or "road warriors" who are always on the go. The adapter is 40% thinner than the standard 65W adapter and includes a convenient USB port for charging other accessories while you work. Four international adapter plugs help make sure your Slim Travel Adapter works wherever you do. A stylish protective carrying case keeps everything together.

Product number: JOE43AA

HP Care Pack: 3-year Next Business Day Onsite



Receive 3 years of next business day onsite repair from an HP-qualified technician for your computing device, if the issue cannot be solved remotely

Product number: U4414E

Learn more at
www.hp.eu/hpoptions

HP EliteBook Revolve 810 G3 Tablet

Messaging Footnotes

- ¹ Not all features are available in all editions or versions of Windows. Systems may require upgraded and/or separately purchased hardware, drivers and/or software to take full advantage of Windows functionality. See <http://www.microsoft.com>.
- ² Not all configurations will qualify as an Ultrabook™.
- ³ MIL-STD testing is pending and is not intended to demonstrate fitness for U.S. Department of Defense contract requirements or for military use. Test results are not a guarantee of future performance under these test conditions.
- ⁴ Sold separately or as an optional feature.
- ⁵ Multi-Core is designed to improve performance of certain software products. Not all customers or software applications will necessarily benefit from use of this technology. 64-bit computing system required. Performance will vary depending on your hardware and software configurations. Intel's numbering is not a measurement of higher performance.
- ⁶ Some functionality of this technology, such as Intel® Active management technology and Intel Virtualization technology, requires additional 3rd party software in order to run. Availability of future "virtual appliances" applications for Intel vPro technology is dependent on 3rd party software providers. Microsoft Windows required.
- ⁷ HP BIOSphere features may vary depending on the PC platform & configuration.
- ⁸ HP Touchpoint Manager supports Android™, iOS and Windows operating systems and PCs, notebooks, tablets and smartphones from various manufacturers. Not available in all countries see www.hp.com/touchpoint for availability information. Touchpoint Manager requires purchase of a subscription.
- ⁹ HP Care Services are optional. Service levels and response times for HP Care Services may vary depending on your geographic location. Service starts on date of hardware purchase. Restrictions and limitations apply. For details, visit www.hp.com/go/cpc. HP services are governed by the applicable HP terms and conditions of service provided or indicated to Customer at the time of purchase. Customer may have additional statutory rights according to applicable local laws, and such rights are not in any way affected by the HP terms and conditions of service or the HP Limited Warranty provided with your HP Product.
- ¹⁰ Financing and service offerings available through Hewlett-Packard Financial Services Company and its subsidiaries and affiliates (collectively HPFSC) in certain countries and is subject to credit approval and execution of standard HPFSC documentation. Subscriptions to use are available for 24 or 36 month terms. Rates and terms are based on customer's credit rating, offering types, services and/or equipment type and options. Not all customers may qualify. Not all services or offers are available in all countries. Other restrictions may apply. HPFSC reserves the right to change or cancel this program at any time without notice.

Technical specifications disclaimers

- ¹ Not all features are available in all editions or versions of Windows. Systems may require upgraded and/or separately purchased hardware, drivers, software or BIOS update to take full advantage of Windows functionality. Windows 10 is automatically updated, which is always enabled. ISP fees may apply and additional requirements may apply over time for updates. See <http://www.microsoft.com>.
- ² This system is preinstalled with Windows 7 Professional software and also comes with a license and media for Windows 10 Pro software. You may only use one version of the Windows software at a time. Switching between versions will require you to uninstall one version and install the other version. You must back up all data (files, photos, etc.) before uninstalling and installing operating systems to avoid loss of your data.
- ³ For solid state drives, GB = 1 billion bytes. Actual formatted capacity is less. Up to 16 GB (for Windows 7) and up to 30 GB (for Windows 8.1/10) of system disk is reserved for system recovery software.
- ⁴ For 802.11, wireless access point and Internet service is required and is not included. Availability of public wireless access points limited. The specifications for the 802.11ac WLAN are draft specifications and are not final. If the final specifications differ from the draft specifications, it may affect the ability of the notebook to communicate with other 802.11ac WLAN devices.
- ⁵ WWAN is an optional feature. Broadband use requires separately purchased service contract. Check with service provider for coverage and availability in your area. Connection speeds will vary due to location, environment, network conditions, and other factors. 4G LTE not available on all products, in all regions.
- ⁶ Bluetooth™ 4.0 is available on Windows 8.1 operating system only.
- ⁷ 802.11 + Bluetooth combos sold separately or as an optional feature.
- ⁸ HD content required to view HD images.
- ⁹ HP Touchpoint Manager supports Android™, iOS and Windows operating systems and PCs, notebooks, tablets and smartphones from various manufacturers. Not available in all countries see www.hp.com/touchpoint for availability information. Touchpoint Manager requires purchase of a subscription. Out-of-band HP only Wipe, Lock, Unlock and reporting of BIOS boot error codes is planned to be available on select HP EliteBooks and required Intel® vPro™ technology and functions in S3/Sleep, S4/Hibernate and S5/Soft Off power states.
- ¹⁰ HP File Sanitizer is for the use cases outlined in the DDD 5220.22-M Supplement. Does not support Solid State Drives (SSDs). Initial setup required. Web history deleted only in Internet Explorer and Firefox browsers and must be user enabled. With Windows 8.1, user must turn off Enhanced Protection Mode in IE11 for shred on browser close feature.
- ¹¹ Secure Erase is for the methods outlined in the National Institute of Standards and Technology Special Publication 800-88.
- ¹² Absolute Data Protect software is preloaded, subscription required. See <http://www.absolute.com/landing/2012/computrace-hp> for complete details. Absolute Data Protect agent is shipped turned off, and must be activated by customers. Service may be limited, check with Absolute for availability outside the U.S. The optional subscription service of Absolute Recovery Guarantee is a limited warranty. Certain conditions apply. For full details visit: <http://www.absolute.com/company/legal/agreements/computrace-agreement>. If Data Delete is utilized, the Recovery Guarantee payment is null and void. In order to use the Data Delete service, customers must first sign a Pre-Authorization Agreement and either create a PIN or purchase one or more RSA SecurID tokens from Absolute Software.
- ¹³ HP Client Security Suite requires Windows
- ¹⁴ HP SpareKey requires initial user setup
- ¹⁵ BIOS Absolute Persistence module is shipped turned off, and will be activated when customers purchase and activate a subscription. Service may be limited. Check with Absolute for availability outside the U.S. The optional subscription service of Absolute Recovery Guarantee is a limited warranty. Certain conditions apply. For full details visit: <http://www.absolute.com/company/legal/agreements/computrace-agreement>. If Data Delete is utilized, the Recovery Guarantee payment is null and void. In order to use the Data Delete service, customers must first sign a Pre-Authorization Agreement and either create a PIN or purchase one or more RSA SecurID tokens from Absolute Software.
- ¹⁶ HP ePrint Requires an internet connection to HP web-enabled printer and HP ePrint account registration (for a list of eligible printers, supported documents and image types and other HP ePrint details, see www.hp.com/go/businessmobileprinting)
- ¹⁷ HP PageLift requires Windows 7 or higher.
- ¹⁸ Multi-Core is designed to improve performance of certain software products. Not all customers or software applications will necessarily benefit from use of this technology. 64-bit computing on Intel® architecture requires a computer system with a processor, chipset, BIOS, operating system, device drivers, and applications enabled for Intel® 64 architecture. Processors will not operate (including 32-bit operation) without an Intel® 64 architecture-enabled BIOS. Performance will vary depending on your hardware and software configurations. Intel's numbering is not a measurement of higher performance.
- ²⁰ This system is preinstalled with Windows 7 Professional software and also comes with a license and media for Windows 8.1 Pro software. You may only use one version of the Windows software at a time. Switching between versions will require you to uninstall one version and install the other version. You must back up all data (files, photos, etc.) before uninstalling and installing operating systems to avoid loss of your data.

Learn more at

www.hp.eu/notebooks

Engage HP Financial Services

Explore monthly payment options and technology refresh plans that can provide more flexibility to help you meet your IT goals. More information on www.hp.com/go/hpfs.

Sign up for updates

www.hp.com/go/getupdated

© Copyright 2014, 2015. Hewlett-Packard Development Company, L.P. The information contained herein is subject to change without notice. The only warranties for HP products and services are set forth in the express warranty statements accompanying such products and services. Nothing herein should be construed as constituting an additional warranty. HP shall not be liable for technical or editorial errors or omissions contained herein.

Bluetooth is a trademark of its proprietor and used by Hewlett-Packard Company under license. Intel and Core are trademarks of Intel Corporation in the U.S. and other countries. Qualcomm and Gobi are trademarks of Qualcomm Incorporated, registered in the United States and other countries. Trademarks of Qualcomm Incorporated are used with permission. For DTS patents, see <http://patents.dts.com>. Manufactured under license from DTS Licensing Limited. DTS, the Symbol, & DTS and the Symbol together are registered trademarks, and DTS Studio Sound is a trademark of DTS, Inc. © DTS, Inc. All Rights Reserved. ENERGY STAR is a registered trademark of the U.S. Environmental Protection Agency. All other trademarks are the property of their respective owners.

