

# HP PageWide XL 8000 Blueprinter



Breakthrough speed for black and white and blueprints



## ACCELERATE

### More pages out 24/7

- Print up to 18 A0/minute for whiteprints and digital blueprints; 6 A0/minute for natural tracing paper
- Start printing in 50% of the time<sup>1</sup>—an ultra-fast processor, native PDF management, HP SmartStream software
- Free up the operator—production stacker/online folder,<sup>2</sup> up to 6 rolls, dual ink supplies with auto-switch
- Minimize downtime with proven HP PageWide Technology for high-volume print production<sup>3</sup>

## OPTIMIZE

### Improve workflows and help reduce costs

- Competitive cost of operation compared to analog blueprinters and black-and-white LED printers<sup>4</sup>
- Reduce complexity—eliminate manual steps and prevent errors with an automated end-to-end digital workflow
- Easy workflow integration—print from your PC or make copies with easily integrated HP DesignJet scanners
- With no ammonia, you can place your HP blueprinter anywhere to help create a healthier work environment

## IMPRESS

### Set a new quality standard

- Produce crisp lines, fine detail, and smooth grayscales clearly superior to analog blueprints and LED<sup>5</sup>
- HP PageWide XL pigment ink produces archivable prints that are moisture and fade resistant<sup>6</sup>
- Print from a single printer with black and two tones of blue for printing black and blue with adjustable hue

For more information, please visit  
[hp.com/go/pagewidexl8000blueprinter](http://hp.com/go/pagewidexl8000blueprinter)



reddot award 2016  
best of the best



Dynamic security enabled printer. Only intended to be used with cartridges using an HP original chip. Cartridges using a non-HP chip may not work, and those that work today may not work in the future. More at: [hp.com/go/learnaboutsupplies](http://hp.com/go/learnaboutsupplies)

**Note:** HP PageWide XL printers are not designed to use continuous ink systems. HP PageWide XL printers are designed for ink cartridges to be used until they are empty. Refilling cartridges prior to depletion might cause the printer to fail, and voids the HP ink cartridge warranty.

<sup>1</sup> Using HP SmartStream software compared with using equivalent software programs. For testing criteria, see [hp.com/go/pagewidexlclaims](http://hp.com/go/pagewidexlclaims).

<sup>2</sup> The production stacker, online folder, and HP HD/SD Pro Scanners are optional accessories.

<sup>3</sup> Proven HP PageWide Technology powers HP PageWide Web Presses—currently producing 4 billion impressions monthly—and HP PageWide Pro and HP PageWide Enterprise printers.

<sup>4</sup> Cost of operation is competitive with analog blueprinters and black-and-white LED printers under \$150,000 USD in the market as of March, 2015. Source: HP research in China based on customer interviews and focus groups.

<sup>5</sup> Print quality comparison with black-and-white LED printers for output produced with HP PageWide XL printers and LED printers from different manufacturers and that represent greater than 50% of the annual shipments as of 2014 of LED printers in North America according to IDC. Comparison with analog blueprinters. For testing criteria, see [hp.com/go/pagewidexlclaims](http://hp.com/go/pagewidexlclaims).

<sup>6</sup> Compared to prints produced with HP 970/971/980 inks that are fade and moisture resistant per ISO 11798 Permanence and Durability Methods certification. For testing criteria, see [hp.com/go/pagewidexlclaims](http://hp.com/go/pagewidexlclaims).

Based on reliable HP Thermal Inkjet technology and HP PageWide XL pigment ink, HP PageWide Technology offers high quality at high printing speeds. Scalable to meet a wide range of application and performance requirements, HP PageWide Technology provides breakthrough print speeds for both whiteprints and blueprints.

## HP PageWide Technology

The HP PageWide XL 8000 Blueprinter includes a stationary 101.6-cm (40-inch) printbar that spans the whole printing width. As paper moves under the printbar, the entire page is printed in one pass, enabling very high printing speeds.

## HP PageWide XL pigment ink for HP PageWide XL blueprinters



8 (2 x 775-ml black and B1, 4 x 775-ml B2) with auto-switch

HP PageWide XL pigment ink is specially designed to provide reliable and dependable operation with HP PageWide XL blueprinters and to produce high-quality output:

- Crisp lines, fine detail, and smooth grayscales
- Archivable, moisture- and fade-resistant prints<sup>6</sup>

## Reliable operation for high-volume printing

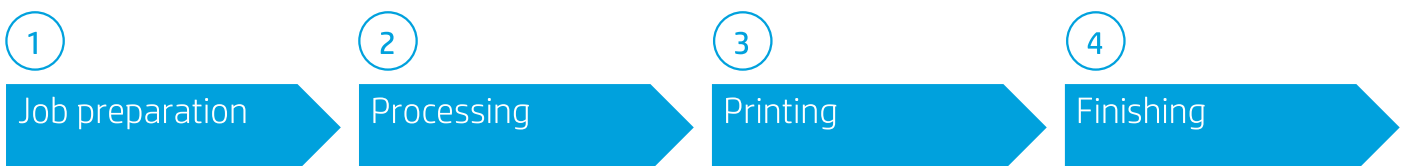
Designed for high-volume operation, the HP PageWide XL 8000 Blueprinter is based on proven HP PageWide Technology, currently powering HP PageWide Web Presses—producing 4 billion impressions monthly—and HP PageWide Pro and HP PageWide Enterprise printers.

HP 841 PageWide XL Printheads provide reliable and long-life operation, with an average life per printhead of 32 liters of ink.

## End-to-end productivity

HP PageWide XL systems have been designed to help you provide radically faster delivery.

To help you meet aggressive deadlines, productivity is optimized in every step of the workflow:



1. Using HP SmartStream Preflight Manager, jobs can be prepared in 50% of the time<sup>1</sup>
2. With an ultra-fast processor and the embedded Adobe PDF Print Engine 4,<sup>7</sup> HP PageWide XL blueprinters are designed for quick processing, including the most complex jobs
3. Printing up to 18 A0/min—for whiteprints and digital blueprints; 6 A0 /min for natural tracing paper with:
  - Breakthrough print engine speed of up to 23 meters/minute (75 feet/minute)
  - Very short time between pages (up to 0.15 seconds)
  - Extended time between service station cycles (up to hundreds of pages)
  - Quick switches between loaded rolls (under 5 seconds)
4. Bidirectional communication between the HP PageWide XL blueprinter and the production stacker/online folder<sup>2</sup> provides reliable operation

<sup>7</sup> The Adobe PDF Print Engine (APPE) is Adobe's high speed, high fidelity print platform. Version 4 extends APPE's leading edge for print reproduction with new performance efficiencies and breakthrough rendering features. APPE 4 enables printers to increase workflow efficiency and capitalize on the profit potential of innovations in inkjet print technology. To learn more, visit [adobe.com/products/pdfprintengine](http://adobe.com/products/pdfprintengine).

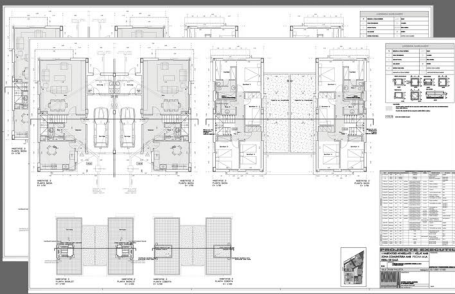
## Set a new quality standard for technical documents

HP 841 PageWide XL Printheads, working with HP PageWide XL pigment ink, are designed to produce durable and high-quality output with dark blacks and vivid colors.

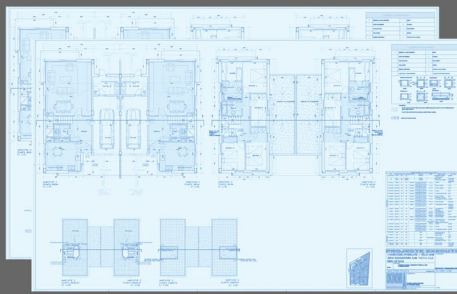
Accurate and reliable dot placement results in crisp lines, fine detail, and smooth grayscales. HP PageWide XL blueprinters do not apply heat to the paper as part of the printing process, enabling very high levels of line accuracy ( $\pm 0.1\%$ ).

## Print black and white, and blue

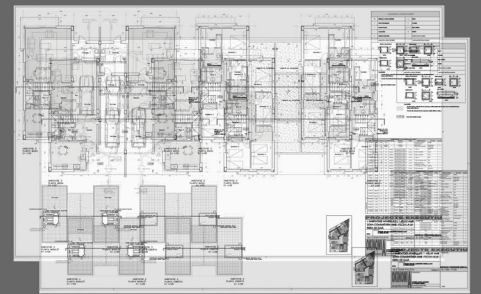
Take care of all your technical document production with just one printer.



Black and white



Blueprint



Natural tracing paper

- 1. Up to 6 rolls**—automatic roll switching when a roll is depleted or a different page size is selected.
- 2. Dual HP 400-ml ink supplies** with auto-switch—replace used cartridges while the printer is running.
- 3. Seamless workflow integration**—copy and scan with high-speed HP HD/SD Pro Scanners and obtain outstanding results.
- 4. High-capacity output solutions**—folder and stacker specially designed to keep up with HP PageWide XL print speeds.
- 5. 203-mm (8-in) touchscreen—status light reports** current status and provides progressive alerts on potential issues that could impact production (i.e., out of paper or ink).



# Technical specifications

<b>General</b>	Description	Large-format black-and-white blueprinter	
	Technology	HP PageWide Technology	
	Applications	Blueprints, Line drawings	
	Ink types	Pigment-based (black, B1, B2)	
	Ink cartridges	8 (2 x 775-ml black and B1, 4 x 775-ml B2) with auto-switch	
	Printheads	8 x HP B41 PageWide XL Printheads	
	Average printhead life	32 liters	
	Printhead warranty	10 liters or 12 months	
	Print resolution	1200 x 1200 dpi	
	Minimum line width	0.02 mm (0.0008 in) (HP-GL/2 addressable)	
	Guaranteed minimum line width	0.085 mm (0.0033 in) (ISO/IEC 13660:2001(E)) <sup>8</sup>	
	Line accuracy	±0.1% <sup>9</sup>	
	<b>Print speed<sup>10</sup></b>	Maximum print speed <sup>11</sup>	23 m/min (75 ft/min)
		A1/Arch D/ANSI D (long edge first)	30 pages/min, 1500 pages/hr
A0/Arch E/ANSI E (short edge first)		18 pages/min, 800 pages/hr	
ISO B1 (long edge first)		24 pages/min	
ISO B0 (short edge first)		15 pages/min	
A0 NTP media (short edge first)		6 pages/min, 250 pages/hr	
A1 NTP media (long edge first)		12 pages/min	
Warm-up time		3 min	
First page out		20 sec (from Ready mode)	
<b>Media</b>		Media rolls	2 rolls default with auto-switching, expandable to 6 rolls
		Roll width	279 to 1016 mm (11 to 40 in)
		Roll length	Up to 200 m (650 ft)
		Roll diameter	Up to 177 mm (7 in)
		Printable width	Up to 1000 mm (39.4 in)
	Printable length	Up to 200 m (650 ft) <sup>12</sup>	
	Media weight	70 to 200 g/m <sup>2</sup> (19 to 53 lb)	
	Media thickness	Up to 15.7 mil	
	Media types	Bond and recycled papers, coated papers, blue papers, natural tracing papers	
	Media output (standard)	Basket	
	Media output (optional)	High-capacity stacker, online folder, top stacker	
	<b>HP HD/SD Pro Scanners<sup>2</sup></b>	Scan speed <sup>13</sup>	Color: up to 15 cm/sec (6 in/sec) Grayscale: up to 33 cm/sec (13 in/sec)
		Optical resolution	1200 dpi
		Maximum scan width	1118-mm (44-in) with the HP SD Pro 44-in Scanner 1067-mm (42-in) with the HP HD Pro 42-in Scanner
Settings		Type of original-preset, color mode, resolution (dpi), batch, single/multipage, file format, customizable file naming, customizable default settings, de-skew, image crop and align preview, enlarge/reduce, blueprint, lightness, saturation and RGB controls, white point and black point adjust, sharpen/blur, background removal, invert, mirror, accounting	
<b>High-capacity stacker<sup>2</sup></b>		Maximum page size	102 x 122 cm (40 x 48 in) <sup>14</sup>
		Capacity	Up to 500 pages
		Media weight	70 to 200 g/m <sup>2</sup> (19 to 53 lb)
		Dimensions	101 x 125 x 108 cm (55.6 x 49.1 x 42.6 in)
		Weight	140 kg (308 lb)
		Tab applicator	Available with HP PageWide XL Folder with Tab Applicator only
<b>Online folder<sup>2</sup></b>		Page width	28 to 91.4 cm (11 to 36 in)
		Page length	Cross fold: 2.5 m (8.2 ft) Fan fold: 6 m (19.7 ft) (standard), unlimited (optional with HP PageWide XL Folder Upgrade Kit for Long Plots)
		Media weight for folding	75 to 90 g/m <sup>2</sup> (20 to 24 lb)
		Media weight for stacking	75 to 200 g/m <sup>2</sup> (20 to 53 lb)
	Capacity	Up to 150 (A0)	
	Dimensions	2100 x 1620 x 1220 mm (82.7 x 63.8 x 48 in)	
<b>Embedded controller</b>	Processor	Intel Core i7	
	Memory	16 GB DDR	
	Hard drive	1 x 128 GB SSD; 1x 500 GB HDD, self-encrypted with AES-256	
	Print languages (standard)	HP-GL/2, PCL 3 Win	
	Print languages (optional)	Adobe PostScript 3, Adobe PDF 1.7, TIFF, JPEG (with PS/PDF upgrade)	
	Remote management	HP Partner Link, HP Embedded Web Server, HP Web Jetadmin	

<sup>8</sup> Measured on HP Universal Bond paper.

<sup>9</sup> ±0.1% of the specified vector length or ±0.2 mm (whichever greater) at 23°C (73°F), 50–60% relative humidity, on A0/E printing material in Best or Normal mode with HP Matte Polypropylene and HP PageWide XL pigment ink.

<sup>10</sup> Print speed while printing to the HP PageWide XL High-capacity Stacker.

<sup>11</sup> Measured using 91-cm (36-in) print width.

<sup>12</sup> For longer plots (up to 200 m (656 ft)), image quality might be affected.

<sup>13</sup> Monochrome scanning: A1/D image with black text graphics at 200 dpi; color scanning: A1/D fully-inked color image at 200 dpi, 24-bit RGB.

<sup>14</sup> Long plots with reduced capacity.

<sup>15</sup> Printing to non-HP large format printers is done through specific drivers, each of them covering several printers: Océ Windows Printer Driver (WPD), KIP Windows Driver WHQL, RICOH PostScript Driver, Xerox WHQL Driver. For more information, please visit: [hp.com/go/smartstream/trial](http://hp.com/go/smartstream/trial).

<sup>16</sup> BMG trademark license code FSC®-C115319, see [fsc.org](http://fsc.org). HP trademark license code FSC®-C017543, see [fsc.org](http://fsc.org). Not all FSC®-certified products are available in all regions. For information about HP large format printing materials, please visit [HPLFMedia.com](http://HPLFMedia.com).

<sup>17</sup> Can be recycled through commonly available recycling programs.



<b>Connectivity</b>	Interfaces	TCP/IP, BootP/DHCP, USB 2.0 host (certified)
	Printing paths	HP SmartStream software (optional) HP Universal Print Driver (HP-GL/2 and PS) HP PageWide XL print drivers (PDF, HP-GL/2, and PS)
<b>User interface</b>	User interface	203-mm (8-inch) capacitive touchscreen
<b>Dimensions</b>	Printer	1960 x 800 x 1527 mm (77.2 x 31.5 x 60.1 in)
	Shipping	2180 x 1068 x 1764 mm (86.8 x 42.1 x 69.5 in)
<b>Weight</b>	Printer	478 kg (1054 lb)
	Shipping	585 kg (1290 lb)
<b>Environmental</b>	Operating temperature	5 to 40°C (41 to 104°F)
	Recommended temperature	15 to 35°C (59 to 95°F)
	Operating humidity	20 to 80% RH, depending on media type
<b>Acoustic</b>	Sound pressure	58 dB(A) (printing), 36 dB(A) (ready), <20 dB(A) (sleep)
	Sound power	7.4 B(A) (printing), 5.2 B(A) (ready), 3.8 B(A) (sleep)
<b>Power</b>	Consumption	0.59 kW (typical); 2.2 kW (max printing); 108.4 watts (ready); < 1 watts (< 4.6 watts with embedded Digital Front End) (sleep)
	Requirements	Input voltage (auto ranging) 200–240 V (±10%), 50/60 Hz (±3 Hz), 13 A
<b>Certification</b>	Safety	IEC 60950-1+A1+A2 compliant; USA and Canada (CSA listed); EU (LVD and EN 60950-1 compliant); Russia, Belarus, and Kazakhstan (EAC)
	Electromagnetic	Compliant with Class A requirements, including: USA (FCC rules), Canada (ICES), EU (EMC Directive), Australia and New Zealand (RCM), Japan (VCCI), Korea (KC)
	Environmental	ENERGY STAR, EPEAT Silver, CE marking (including RoHS, WEEE, REACH); in compliance with WW RoHS materials restriction requirements in China, Korea, India, Vietnam, Turkey, Serbia, and Ukraine
<b>Warranty</b>	90 days	

Dynamic security enabled printer. Only intended to be used with cartridges using an HP original chip. Cartridges using a non-HP chip may not work, and those that work today may not work in the future. More at: [hp.com/go/learnaboutsupplies](http://hp.com/go/learnaboutsupplies)

## Ordering information

<b>Product</b>	CZ315A	HP PageWide XL 8000 40-in Blueprinter	
<b>Accessories</b>	G6H50B	HP HP SD Pro 44-in Scanner	
	G6H51B	HP HP HD Pro 42-in Scanner	
	CZ317A	HP PageWide XL PostScript/PDF Upgrade Kit	
	K5H75A	HP PageWide XL Folder	
	L3M58A	HP PageWide XL Folder with Tab Applicator	
	MOV04A	HP PageWide XL Folder Upgrade Kit for Long Plots	
	CZ318A	HP PageWide XL Drawer	
	CZ319A	HP PageWide XL High-capacity Stacker	
	CZ320A	HP PageWide XL Top Stacker	
	L3J69AAE	HP SmartStream Preflight Manager	
	L3J71AAE	HP SmartStream Preflight Manager One-Year Subscription	
	L3J73AAE	HP SmartStream Print Controller for HP PageWide XL 8000 Blueprinter	
	T9B46AAE	HP SmartStream Print Controller for non-HP Large Format printers <sup>15</sup>	
	<b>Original HP PageWide XL printheads and consumables</b>	C1Q19A	HP B41 PageWide XL Printhead
		F9J47A	HP B41 PageWide XL Cleaning Container
F9J48A		HP B41 PageWide XL Maintenance Cartridge	
<b>Original HP PageWide XL ink cartridges</b>		F9J69A	HP 846B 775-ml Black PageWide XL Ink Cartridge
		F9J70A	HP 846B 775-ml B1 PageWide XL Ink Cartridge
		F9J71A	HP 846B 775-ml B2 PageWide XL Ink Cartridge
<b>Original HP large format printing materials</b>		L4L08A	HP Universal Bond Paper, 3-in Core (FSC® certified) <sup>16</sup>
		L5C80A	HP Universal Heavyweight Coated Paper, 3-in Core (FSC® certified) <sup>16</sup>
		L4Z45A	HP Bright White Inkjet Paper, 3-in Core (FSC® certified) <sup>16</sup>
		L5C74A	HP Universal Coated Paper, 3-in Core (FSC® certified) <sup>16</sup>
			HP Universal Coated Paper, 3-in Core (FSC® certified) <sup>16</sup>

Enjoy best-in-class support services, knowing HP works with HP PageWide XL Channel Partners to enable them to be properly trained, certified, and equipped to meet your needs. With efficient support and innovative support features, such as printer self-monitoring, predefined resolution paths, and intuitive maintenance wizards, you can work with confidence every day. For more information, please visit [hp.com/go/pagewidexlservice](http://hp.com/go/pagewidexlservice).

HP Financial Services can help you acquire an HP PageWide XL printing solution and accelerate the benefits to your business. Our solutions can help you increase your flexibility by preserving cash, freeing up budgets with a monthly payment structure, and offering an easy option to upgrade to the latest model when your business is ready. For more information, please visit the Programs and Promotions section on [hp.com/hpfinancialservices](http://hp.com/hpfinancialservices).

Find the media solution that fits your business and your HP PageWide XL printer at [hp.com/go/mediasolutionslocator](http://hp.com/go/mediasolutionslocator).

### Eco Highlights

- Save paper with automatic print settings and image nesting
- ENERGY STAR® certified and EPEAT Silver registered<sup>1</sup>
- Free, convenient HP ink cartridge recycling<sup>2</sup>
- FSC®-certified papers,<sup>3</sup> range of recyclable HP media<sup>4</sup>



<sup>1</sup> EPEAT registered where applicable and/or supported. See [epeat.net](http://epeat.net) for registration status and rating by country.

<sup>2</sup> Program availability varies. Please check [hp.com/recycle](http://hp.com/recycle) for details.

<sup>3</sup> BMG trademark license code FSC®-C115319, see [fsc.org](http://fsc.org). HP trademark license code FSC®-C017543, see [fsc.org](http://fsc.org). Not all FSC®-certified products are available in all regions. For information about HP large format printing materials, please visit [HPLFMedia.com](http://HPLFMedia.com).

<sup>4</sup> Can be recycled through commonly available recycling programs.

**Please recycle large-format printing hardware and printing supplies.**

Find out how at our website [hp.com/ecosolutions](http://hp.com/ecosolutions)

