

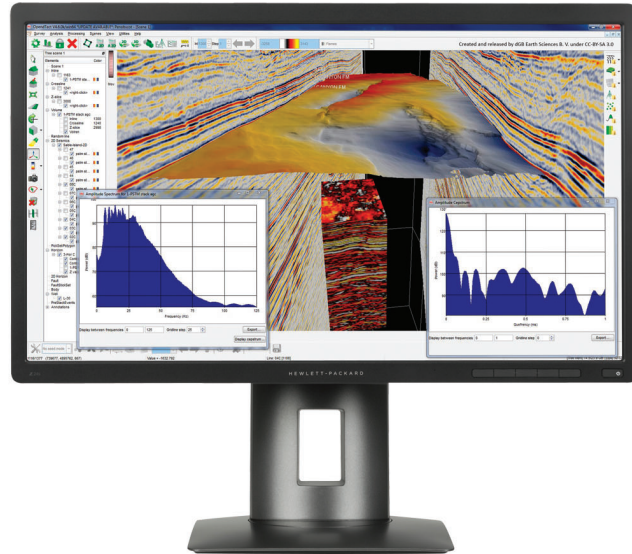
## Datasheet

# HP Z24s 60,45 cm (23.8") IPS UHD Display



## UHD for business and your budget.

Experience ultra high-definition /4K image presentation and factory-calibrated color accuracy out of the box with the HP Z24s 60,45 cm (23.8") IPS UHD Display, which also delivers flexible connectivity and comfort features—all at HP's most affordable HP Z Display price point.



### The display that delivers what you demand.

- Get massive 3840 x 2160 resolution, 185 ppi, and sRGB color gamut for your demanding digital workflows. Wide viewing angles and a 60,45 (23.8") diagonal screen help ensure easy line of sight for one or many viewers.

### Limitless connectivity.

- Connect your display to a workstation, PC, and range of digital video devices with DisplayPort, mini-DisplayPort, HDMI, and four USB 3.0 ports. Use the two side-located USB ports for easy access to your most-used peripherals.

### UHD for every device.

- Instantly mirror your smart phone or tablet content to the large screen through an easy MHL connection that also keeps your devices charged and ready to go.<sup>2</sup>

### Pixels for days.

- Get expansive views of your projects, documents, and media with 8MP—4x that of a Full HD display. View your mobile device and PC feeds side by side in picture-in-picture and picture-by-picture modes.

### Additional features

- Find your sweet spot with customizable tilt, height adjustment, swivel, and pivot settings—plus an integrated HP Quick Release that allows you to mount the display on a wall.<sup>3</sup>
- Design the screen for how you work with HP Display Assistant software.
- Rest assured that your IT investment is supported by a three-year standard limited warranty. To extend your protection beyond the standard limited warranty, select an optional HP Care Pack service.<sup>4</sup>
- Be a better consumer with a display that has environmentally responsible components that include low halogen<sup>5</sup>, arsenic-free glass, and mercury-free backlights.

# HP Z24s 60,45 cm (23.8") IPS UHD Display Specifications Table



<b>Product Number</b>	J2W50A4; J2W50AT
<b>Product Color</b>	Black
<b>Display size (diagonal)</b>	23.8"
<b>Display Type</b>	IPS w/LED backlight
<b>Panel Active Area</b>	527.04 x 296.46 mm; 20.75 x 11.67 in
<b>Viewing Angle</b>	178° horizontal; 178° vertical
<b>Brightness</b>	300 cd/m <sup>2</sup>
<b>Contrast Ratio</b>	1000:1 static; 5000000:1 dynamic <sup>1</sup>
<b>Response Ratio</b>	14 ms gray to gray <sup>1</sup>
<b>Aspect Ratio</b>	16:9
<b>Native Resolution</b>	3840 x 2160 @ 60 Hz
<b>Resolutions Supported</b>	3840 x 2160; 2560 x 1600; 2560 x 1440; 1920 x 1200; 1920 x 1080; 1680 x 1050; 1600 x 1200; 1600 x 900; 1440 x 900; 1366 x 768; 1280 x 1024; 1280 x 960; 1280 x 800; 1280 x 768; 1280 x 720; 800 x 600; 720 x 480; 720 x 400; 640 x 480
<b>Display Features</b>	Plug and Play; Anti-glare; User programmable; Language selection; On-screen controls; LED Backlights; In plane switching
<b>User Controls</b>	4-button OSD; Menu; Power
<b>Input signal</b>	1 MHL 2.0/HDMI 1.4 (with HDCP support); 1 HDMI 1.4 (with HDCP support); 1 DisplayPort 1.2 (with HDCP support); 1 Mini-DisplayPort
<b>Ports and Connectors</b>	4 USB 3.0 (two side and two rear); 1 audio output
<b>Input power</b>	Input voltage: 90 to 265 VAC
<b>Power consumption</b>	Energy Efficiency Class: C; Panel Active Area: 527.04 x 296.46 mm; 20.75 x 11.67 in; On-mode power consumption: 44,0 W; Annual energy consumption: 64,0 kWh; Power consumption (standby): 0,50 W; Power consumption (off-mode): 0,30 W; Power consumption Description: 88 W (maximum), 60 W (typical), 0,5 W (standby); Screen resolution: 3840 x 2160 @ 60 Hz
<b>Dimensions with Stand (W x D x H)</b>	21.9 x 8.3 x 20.7 in 55.61 x 21.02 x 52.68 cm
<b>Dimensions without Stand (W x D x H)</b>	21.9 x 2.7 x 13.2 in 55.61 x 6.97 x 33.53 cm
<b>Weight</b>	14.1 lb 6.46 kg (With stand)
<b>Ergonomic features</b>	Tilt: -5 to +20°; Swivel: ±45°; Pivot rotation: 90°
<b>Certification and Compliance</b>	CE; CB; KC/KCC; NOM; PSB; ICE; TUV-S; UL-CSA; CCC; CEL; CECP; SEPA; EPA; ISC; VCCI; FCC; Taiwan BSMI; Microsoft WHQL Certification (Windows 8.1 and Windows 7); SmartWay Transport Partnership (NA)
<b>Environmental</b>	Arsenic-free display glass; Mercury-free display backlights; Low halogen <sup>2</sup>
<b>Warranty</b>	3-years limited warranty including 3 years of parts and labour. Certain restrictions and exclusions apply.

## HP Z24s 60,45 cm (23.8") IPS UHD Display

### Accessories and services (not included)

---

#### HP Dual Output USB Graphics Adapter



Increase screen real estate and productivity with a dual-monitor setup with the HP Dual Output USB Graphics Adapter, featuring DVI-I and DisplayPort outputs to drive displays at high resolutions through a single USB 3.0 B connection to your PC.

**Product number: C5U89AA**

#### HP 5 year Next business day Onsite Standard Monitor Hardware Support



Receive 5 years of next business day onsite repair from an HP-qualified technician for your computing device, if the issue cannot be solved remotely.

**Product number: U7935E**

---

## HP Z24s 60,45 cm (23.8") IPS UHD Display

### Messaging Footnotes

<sup>1</sup> 4K content required.

<sup>2</sup> MHL 2.0 port will charge a MHL compatible smart phone and tablet battery. Includes a DisplayPort to HDMI dongle to increase connect flexibility. Requires the smart phone or tablet to be enabled for MHL or have an HDMI dongle to connect to the monitor. See your mobile device specifications. Max display resolution is Full HD.

<sup>3</sup> Mounting hardware sold separately.

<sup>4</sup> Sold separately. Service levels and response times for HP Care Packs may vary depending on your geographic location. Service starts on date of hardware purchase. Restrictions and limitations apply. For details, visit [www.hp.com/go/cpc](http://www.hp.com/go/cpc). HP Services are governed by the applicable HP terms and conditions of service provided or indicated to Customer at the time of purchase. Customer may have additional statutory rights according to applicable local laws, and such rights are not in any way affected by the HP terms and conditions of service or the HP Limited Warranty provided with your HP Product.

<sup>5</sup> External power supplies, power cords, cables and peripherals are not Low Halogen. Service parts obtained after purchase may not be Low Halogen.

### Technical specifications disclaimers

<sup>1</sup> All specifications represent the typical specifications provided by HP's component manufacturers; actual performance may vary either higher or lower.

<sup>2</sup> External power supplies, power cords, cables and peripherals are not Low Halogen. Service parts obtained after purchase may not be Low Halogen.

### Learn more at

[www.hp.eu/monitors](http://www.hp.eu/monitors)

### Engage HP Financial Services

Explore monthly payment options and technology refresh plans that can provide more flexibility to help you meet your IT goals. More information on [www.hp.com/go/hpfs](http://www.hp.com/go/hpfs).

### Sign up for updates

[www.hp.com/go/getupdated](http://www.hp.com/go/getupdated)

---

© Copyright 2016 HP Development Company, L.P. The information contained herein is subject to change without notice. The only warranties for HP products and services are set forth in the express warranty statements accompanying such products and services. Nothing herein should be construed as constituting an additional warranty. HP shall not be liable for technical or editorial errors or omissions contained herein.

4AA5-7439EEE, June 2016

