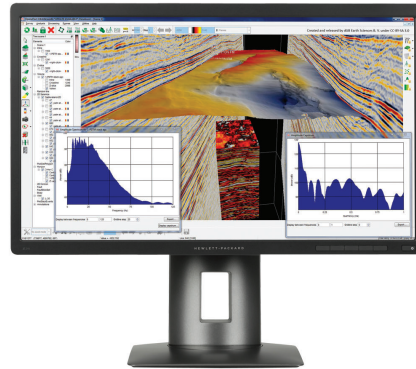


HP Z24s 23.8-inch IPS UHD Display



Experience ultra high-definition /4K¹ image presentation and factory-calibrated color accuracy out of the box with the HP Z24s 23.8-inch IPS UHD Display, which also delivers flexible connectivity and comfort features—all at HP's most affordable HP Z Display price point.



The display that delivers what you demand.

- Get massive 3840 x 2160 resolution, 185 ppi, and sRGB color gamut for your demanding digital workflows. Wide viewing angles and a 23.8-inch diagonal screen help ensure easy line of sight for one or many viewers.

Limitless connectivity.

- Connect your display to a workstation, PC, and range of digital video devices with DisplayPort, mini-DisplayPort, HDMI, and four USB 3.0 ports. Use the two side-located USB ports for easy access to your most-used peripherals.

UHD for every device.

- Instantly mirror your smart phone or tablet content to the large screen through an easy MHL connection that also keeps your devices charged and ready to go.²

Pixels for days.

- Get expansive views of your projects, documents, and media with 8MP—4x that of a Full HD display. View your mobile device and PC feeds side by side in picture-in-picture and picture-by-picture modes.

Additional features

- Find your sweet spot with customizable tilt, height adjustment, swivel, and pivot settings—plus an integrated HP Quick Release that allows you to mount the display on a wall.³
- Design the screen for how you work with HP Display Assistant software.
- Rest assured that your IT investment is supported by a three-year standard limited warranty. To extend your protection beyond the standard limited warranty, select an optional HP Care Pack service.⁴
- Be a better consumer with a display that has environmentally responsible components that include low halogen⁵, arsenic-free glass, and mercury-free backlights.

HP Z24s 23.8-inch IPS UHD Display Specifications Table



Display Type	IPS w/LED backlight
Panel Active Area	527.04 x 296.46 mm
Display Size (diagonal)	23.8"
Viewing Angle	178° horizontal; 178° vertical
Brightness	300 cd/m ² ¹
Contrast Ratio	1000:1 static; 5000000:1 dynamic ¹
Response Ratio	14 ms gray to gray ¹
Product colour	Black
Aspect Ratio	16:9
Native Resolution	3840 x 2160 @ 60 Hz
Resolutions Supported	3840 x 2160; 2560 x 1600; 2560 x 1440; 1920 x 1200; 1920 x 1080; 1680 x 1050; 1600 x 1200; 1600 x 900; 1440 x 900; 1366 x 768; 1280 x 1024; 1280 x 960; 1280 x 800; 1280 x 768; 1280 x 720; 800 x 600; 720 x 480; 720 x 400; 640 x 480
Display Features	Plug and Play; Anti-glare; User programmable; Language selection; On-screen controls; LED Backlights; In plane switching
User Controls	4-button OSD; Menu; Power
Input Signal	1 MHL 2.0/HDMI 1.4 (with HDCP support); 1 HDMI 1.4 (with HDCP support); 1 DisplayPort 1.2 (with HDCP support); 1 Mini-DisplayPort
Ports and Connectors	4 USB 3.0 (two side and two rear); 1 audio output
Input Power	Input voltage: 90 to 265 VAC
Power Consumption	88 W (maximum), 60 W (typical), 0.5 W (standby)
Dimensions with Stand (W x D x H)	55.61 x 21.02 x 52.68 cm
Dimensions without Stand (W x D x H)	55.61 x 6.97 x 33.53 cm
Weight	6.46 kg With stand
Ergonomic Features	Tilt: -5 to +20°; Swivel: ±45°; Pivot rotation: 90°
Physical security features	Security lock-ready (lock is sold separately)
Environmental	Operating temperature: 5 to 35°C Operating humidity: 20 to 80% RH
Certification and compliance	CE; CB; KC/KCC; NOM; PSB; ICE; TUV-S; UL-CSA; CCC; CEL; CECP; SEPA; EPA; ISC; VCCI; FCC; Taiwan BSMI; Microsoft WHQL Certification (Windows 8.1 and Windows 7); SmartWay Transport Partnership (NA)
Environmental Specifications	Arsenic-free display glass; Mercury-free display backlights; Low halogen ²
Warranty	Protected by HP, including a 3 year standard limited warranty

See important legal disclaimers on the last page

Recommended Accessories and Services

**HP 5-year Next Business Day
Onsite Large Monitor
Hardware Support**



Receive 5 years of next business day onsite repair from an HP-qualified technician for your computing device, if the issue cannot be solved remotely. For more information on Care Pack services, please visit www.hp.com/go/cpc.
Product number: U7937E

Messaging Footnotes

¹ 4K content required.

² MHL 2.0 port will charge a MHL compatible smart phone and tablet battery. Includes a DisplayPort to HDMI dongle to increase connect flexibility. Requires the smart phone or tablet to be enabled for MHL or have an HDMI dongle to connect to the monitor. See your mobile device specifications. Max display resolution is Full HD.

³ Mounting hardware sold separately.

⁴ Sold separately. Service levels and response times for HP Care Packs may vary depending on your geographic location. Service starts on date of hardware purchase. Restrictions and limitations apply. For details, visit www.hp.com/go/cpc. HP Services are governed by the applicable HP terms and conditions of service provided or indicated to Customer at the time of purchase. Customer may have additional statutory rights according to applicable local laws, and such rights are not in any way affected by the HP terms and conditions of service or the HP Limited Warranty provided with your HP Product.

⁵ External power supplies, power cords, cables and peripherals are not Low Halogen. Service parts obtained after purchase may not be Low Halogen.

Technical Specifications Footnotes

¹ All specifications represent the typical specifications provided by HP's component manufacturers; actual performance may vary either higher or lower.

² External power supplies, power cords, cables and peripherals are not Low Halogen. Service parts obtained after purchase may not be Low Halogen.

Sign up for updates
hp.com/go/getupdated

© Copyright 2015, 2016 HP Development Company, L.P. The information contained herein is subject to change without notice. The only warranties for HP products and services are set forth in the express warranty statements accompanying such products and services. Nothing herein should be construed as constituting an additional warranty. HP shall not be liable for technical or editorial errors or omissions contained herein.

