



HP PageWide XL 5000 Blueprinter

Powerful black and white and blueprint production



LEAD

Fast delivery of black and white, blueprints

- Up to 14 A1/minute for whiteprints and digital blueprints; 12 A1/minute for natural tracing paper
- Start printing in 50% of the time¹—an ultra-fast processor, native PDF management, HP SmartStream software
- Free up the operator—production stacker/online folder,² up to 4 rolls, dual ink supplies with auto-switch
- Minimize downtime with proven HP PageWide Technology for high-volume print production³

OPTIMIZE

Improve workflows and help reduce costs

- Competitive cost of operation compared to analog blueprinters and black-and-white LED printers⁴
- Reduce complexity—eliminate manual steps and prevent errors with an automated end-to-end digital workflow
- Easy integration into your workflow—print from your PC or make copies with the integrated 1200 dpi scanner
- With no ammonia, you can place your HP blueprinter anywhere to help create a healthier work environment

IMPRESS

Set a new quality standard

- Produce crisp lines, fine detail, and smooth grayscales clearly superior to analog blueprints and LED⁵
- HP PageWide XL pigment ink produces archival prints that are moisture and fade resistant⁶
- Print from a single printer with black and two tones of blue for printing black and blue with adjustable hue

For more information, please visit
hp.com/go/pagewidexl5000blueprinter



reddot award 2016
best of the best



Dynamic security enabled printer. Cartridges using a non-HP chip might not work and those that work today might not work in the future. More at: hp.com/go/learnaboutsupplies

Note: HP PageWide XL printers are not designed to use continuous ink systems. HP PageWide XL printers are designed for ink cartridges to be used until they are empty. Refilling cartridges prior to depletion might cause the printer to fail, and voids the HP ink cartridge warranty.

¹ Using HP SmartStream software compared with using equivalent software programs. For testing criteria, see hp.com/go/pagewidexlclaims.

² The production stacker and online folder are optional accessories.

³ Proven HP PageWide Technology powers HP PageWide Web Presses—currently producing 4 billion impressions monthly—and HP PageWide Pro and HP PageWide Enterprise printers.

⁴ Cost of operation is competitive with analog blueprinters and black-and-white LED printers under \$40,000 USD in the market as of March, 2015. Source: HP research in China based on customer interviews and focus groups.

⁵ Print quality comparison with black-and-white LED printers for output produced with HP PageWide XL printers and LED printers from different manufacturers and that represent greater than 50% of the annual shipments as of 2014 of LED printers in North America according to IDC. Comparison with analog blueprinters. For testing criteria, see hp.com/go/pagewidexlclaims.

⁶ Compared to prints produced with HP 970/971/980 inks that are fade and moisture resistant per ISO 11798 Permanence and Durability Methods certification. For testing criteria, see hp.com/go/pagewidexlclaims.

Improve the way you work—do more in a day, set a new quality standard. Move your business into more productive printing. Fast speeds, simplified and automated workflows, and superior document quality⁵ empower you to serve your clients in new ways—at a cost competitive to what you have today.⁴

HP PageWide Technology

The HP PageWide XL 5000 Blueprinter includes a stationary 101.6-cm (40-inch) printbar that spans the whole printing width. As paper moves under the printbar, the entire page is printed in one pass, enabling very high printing speeds.

HP PageWide XL pigment ink for HP PageWide XL blueprinters

HP PageWide XL pigment ink is specially designed to provide reliable and dependable operation with HP PageWide XL blueprinters and produce high-quality output:

- Crisp lines, fine detail, and smooth grayscales
- Archivable, moisture- and fade-resistant prints⁶

Proven technology for reliable operation

Designed for mid-volume production, the HP PageWide XL 5000 Blueprinter is based on proven HP PageWide Technology, currently powering HP PageWide Web Presses—producing 4 billion impressions monthly—and HP PageWide Pro and HP PageWide Enterprise printers.

HP 841 PageWide XL Printheads provide reliable and long-life operation, with an average life per printhead of 32 liters of ink.

Print fast, deliver faster

1. Using HP SmartStream Preflight Manager, jobs can be prepared in 50% of the time¹
2. With an ultra-fast processor and the embedded Adobe PDF Print Engine 4,⁷ HP PageWide XL blueprinters are designed for quick processing, including the most complex jobs
3. Printing up to 14 A1/minute for whiteprints and digital blueprints; 12 A1/minute for natural tracing paper
4. Printing up to 20 A1/minute for whiteprints and digital blueprints with the HP PageWide XL 5000 Blueprinter Speed Upgrade Kit

Set a new quality standard for technical documents

HP 841 PageWide XL Printheads, working with HP PageWide XL pigment ink, are designed to produce durable and high-quality output.

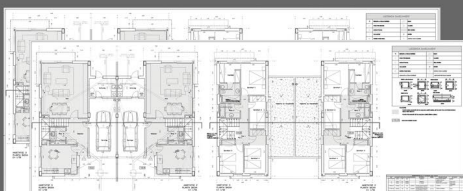
Accurate and reliable dot placement results in crisp lines, fine detail, and smooth grayscales. HP PageWide XL blueprinters do not apply heat to the paper as part of the printing process, enabling very high levels of line accuracy ($\pm 0.1\%$).

Print black and white, and blue

Take care of all your technical document production with just one printer.



8 HP PageWide XL ink cartridges
(2 x 400-ml black and B1, 4 x 400-ml B2)
with auto-switch



Black and white

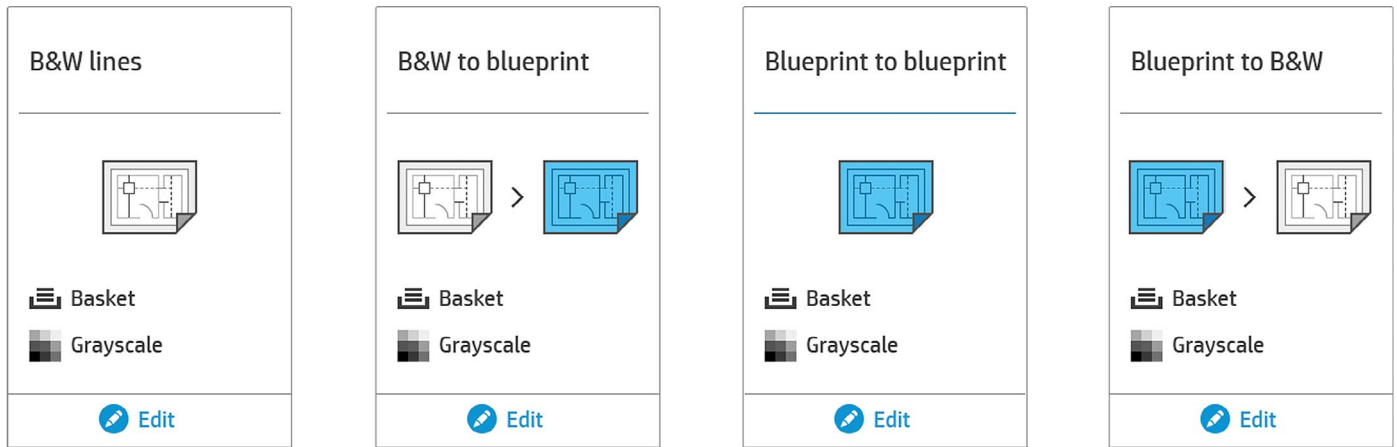


Blueprint



Natural tracing paper

Easily scan and copy from any original and to any output type, thanks to the integrated 1200 dpi scanner and its advanced, easy-to-use workflow features.



Reduce complexity—eliminate manual steps and prevent errors with an automated end-to-end digital workflow



- 1. Up to 4 rolls**—automatic roll switching when a roll is depleted or a different page size is selected.
- 2. Dual 400-ml HP ink supplies** with auto-switch—replace used cartridges while the printer is running.
- 3. Easy integration into your workflow**—print from your PC or make copies with the integrated 1200 dpi scanner.
- 4. 203-mm (8-inch) touchscreen**—**status light reports** current status and provides progressive alerts on potential issues that could impact production (i.e., out of paper or ink).
- 5. Top stacker**—designed to save space, with capacity up to 100 pages.
- 6. High-capacity output solutions**—HP PageWide XL Folder and HP PageWide XL High-capacity Stacker specially designed to keep up with HP PageWide XL print speeds.

Technical specifications

General	Description	Large-format black-and-white blueprint MFP	
	Technology	HP PageWide Technology	
	Applications	Blueprints, Line drawings	
	Ink types	Pigment-based (black, B1, B2)	
	Ink cartridges	8 (2 x 400-ml black and B1, 4 x 400-ml B2) with auto-switch	
	Printheads	8 x HP B41 PageWide XL Printheads	
	Average printhead life	32 liters	
	Printhead warranty	10 liters or 12 months from installation	
	Print resolution	1200 x 1200 dpi	
	Minimum line width	0.02 mm (0.0008 in) (HP-GL/2 addressable)	
	Guaranteed minimum line width	0.085 mm (0.0033 in) (ISO/IEC 13660:2001(E)) ⁸	
	Line accuracy	± 0.1% ⁹	
	Print speed¹⁰	Maximum print speed ¹¹	9 m/min (27.8 ft/min) 15.24 m/min (49.8 ft/min) with optional speed upgrade
		A1/Arch D/ANSI D (long edge first)	14 pages/min, 600 pages/hr 20 pages/min, 1140 pages/hr with optional speed upgrade
		A0/Arch E/ANSI E (short edge first)	7 pages/min, 300 pages/hr 11 pages/min, 640 pages/hr with optional speed upgrade
A0 NTP media (short edge first)		6 pages/min, 250 pages/hr	
A1 NTP media (long edge first)		12 pages/min	
Warm-up time		3 min	
First page out		30 sec (from Ready mode)	
Media	Media rolls	2 rolls default with auto-switching, expandable to 4 rolls	
	Roll width	279 to 1016 mm (11 to 40 in)	
	Roll length	Up to 200 m (650 ft)	
	Roll diameter	Up to 177 mm (7 in)	
	Roll core diameter	7.6 cm (3 in)	
	Printable width	Up to 1000 mm (39.4 in)	
	Printable length	Up to 200 m (650 ft) ¹²	
	Media weight	70 to 200 g/m ² (19 to 53 lb)	
	Media thickness	Up to 0.4 mm (15.7 mil)	
	Media types	Bond and recycled papers, coated papers, blue papers, natural tracing papers	
	Media output (standard)	Basket	
	Media output (optional)	High-capacity stacker, online folder, top stacker	
	High-capacity stacker²	Maximum page size	102 x 122 cm (40 x 48 in) ¹³
		Capacity	Up to 500 pages
		Media weight	70 to 200 g/m ² (19 to 53 lb)
Dimensions		101 x 125 x 108 cm (55.6 x 49.1 x 42.6 in)	
Weight		140 kg (308 lb)	
Online folder²	Page width	28 to 91.4 cm (11 to 36 in)	
	Page length	Cross fold: 2.5 m (8.2 ft) Fan fold: 6 m (19.7 ft) (standard), unlimited (optional with HP PageWide XL Folder Upgrade Kit for Long Plots)	
	Media weight for folding	75 to 90 g/m ² (20 to 24 lb)	
	Media weight for stacking	75 to 200 g/m ² (20 to 53 lb)	
	Capacity	Up to 150 (A0)	
	Dimensions	2100 x 1620 x 1220 mm (82.7 x 63.8 x 48 in)	
	Weight	360 kg (794 lb)	
	Tab applicator	Available with HP PageWide XL Folder with Tab applicator only	
	Scanner	Description	36-in (91-cm) CIS scanner
		Speed	Color: up to 7.62 cm/sec (3 in/sec) at 200 dpi Grayscale: up to 25.4 cm/sec (10 in/sec) at 200 dpi
Optical resolution		1200 dpi	
Scan width		Up to 914 mm (36 in)	
Original thickness		Up to 0.26 mm (0.01 in)	
Maximum copy length		9512 mm (374.48 in)	
Maximum scan length		18000 mm (708.66 in) (TIFF, 24-in-wide original at 200 dpi), 8000 mm (314.96 in) (JPEG), 5000 mm (196.85 in) (PDF)	
Scan format		Standard: JPEG, TIFF; optional: PDF 1.4, multipage PDF 1.4 (with PS/PDF upgrade)	
Scan features		Preview with cropping, scan quicksets, batch scanning	
Scan destination		USB, network folder (SMB), scan to email, scan to HP SmartStream software	
Embedded controller		Processor	Intel Core i3
		Memory	8 GB DDR3
		Hard drive	1 x 500 GB HDD, self-encrypted with AES-256
		Print languages (standard)	HP-GL/2, PCL 3 Win
		Print languages (optional)	Adobe PostScript 3, Adobe PDF 1.7, TIFF, JPEG (with PS/PDF upgrade)
	Remote management	HP Partner Link, HP Embedded Web Server, HP Web Jetadmin	

⁷ The Adobe PDF Print Engine (APPE) is Adobe's high speed, high fidelity print platform. Version 4 extends APPE's leading edge for print reproduction with new performance efficiencies and breakthrough rendering features. APPE 4 enables printers to increase workflow efficiency and capitalize on the profit potential of innovations in inkjet print technology. To learn more, visit adobe.com/products/pdfprintengine.

⁸ Measured on HP Universal Bond Paper.

⁹ ±0.1% of the specified vector length or ±0.2 mm (whichever greater) at 23°C (73°F), 50-60% relative humidity, on A0/E printing material in Best or Normal mode with HP Matte Polypropylene and HP PageWide XL pigment inks.

¹⁰ Print speed while printing to the HP PageWide XL High-capacity Stacker.

¹¹ Measured using 91-cm (36-in) print width.

¹² For longer plots (up to 200 m (656 ft)), image quality might be affected.

¹³ Long plots with reduced capacity.

¹⁴ Printing to non-HP large format printers is done through specific drivers, each of them covering several printers: Océ Windows Printer Driver (WPD), KIP Windows Driver WHQL, RICOH PostScript Driver, Xerox WHQL Driver. For more information, please visit: hp.com/go/smartstream/trial.

¹⁵ BMG trademark license code FSC®-C115319, see fsc.org. HP trademark license code FSC®-C017543, see fsc.org. Not all FSC®-certified products are available in all regions. For information about HP large format printing materials, please visit HPLFMedia.com.

¹⁶ Can be recycled through commonly available recycling programs.



© Copyright 2015, 2017 HP Development Company, L.P. The information contained herein is subject to change without notice. The only warranties for HP products and services are set forth in the express warranty statements accompanying such products and services. Nothing herein should be construed as constituting an additional warranty. HP shall not be liable for technical or editorial errors or omissions contained herein.

ENERGY STAR and the ENERGY STAR mark are registered trademarks owned by the U.S. Environmental Protection Agency. Adobe, PostScript, and Adobe PostScript 3 are trademarks of Adobe Systems Incorporated. Intel and the Intel Inside logo are trademarks of Intel Corporation in the U.S. and other countries. Windows is a U.S.-registered trademark of Microsoft Corporation. Mac and the Mac logo are trademarks of Apple Computer, Inc., registered in the U.S. and other countries.

4AA5-9228EEP, February 2017, Rev. 5

Connectivity	Interfaces	TCP/IP, BootP/DHCP, USB 2.0 host (certified)
	Printing paths	HP SmartStream software (optional) HP Universal Print Driver (HP-GL/2 and PS) HP PageWide XL print drivers (PDF, HP-GL/2, and PS)
User interface	User interface	203-mm (8-inch) capacitive touchscreen
Dimensions	MFP	1960 x 800 x 1303 mm (77.2 x 31.5 x 51.3 in)
	Shipping	2180 x 1068 x 1764 mm (86.8 x 42.1 x 69.5 in)
Weight	MFP	430 kg (948 lb)
	Shipping	521 kg (1148 lb)
Environmental	Operating temperature	5 to 40°C (41 to 104°F)
	Recommended temperature	15 to 35°C (59 to 95°F)
	Operating humidity	20 to 80% RH, depending on media type
Acoustic	Sound pressure	53 dB(A) (printing), 35 dB(A) (ready), <24 dB(A) (sleep)
	Sound power	7.1 B(A) (printing), 5.2 B(A) (ready), 4.2 B(A) (sleep)
Power	Consumption	0.46 kW (typical); 2.2 kW (max printing); 108.4 watts (ready); <1 watts (< 4.6 watts with embedded Digital Front End) (sleep)
	Requirements	Input voltage (auto ranging) 200-240 V (± 10%), 50/60 Hz (± 3 Hz), 12 A
Certification	Safety	IEC 60950-1+A1+A2 compliant; USA and Canada (CSA listed); EU (LVD and EN 60950-1 compliant); Russia, Belarus, and Kazakhstan (EAC)
	Electromagnetic	Compliant with Class A requirements, including: USA (FCC rules), Canada (ICES), EU (EMC Directive), Australia and New Zealand (RCM), Japan (VCCI), Korea (KC)
	Environmental	ENERGY STAR, EPEAT Silver, CE marking (including RoHS, WEEE, REACH); in compliance with WW RoHS materials restriction requirements in China, Korea, India, Vietnam, Turkey, Serbia, and Ukraine
Warranty	90 days	

Ordering information

Product	CZ316A	HP PageWide XL 5000 40-in Blueprinter
Accessories	CZ317A	HP PageWide XL PostScript/PDF Upgrade Kit
	CZ318A	HP PageWide XL Drawer
	CZ319A	HP PageWide XL High-capacity Stacker
	CZ320A	HP PageWide XL Top Stacker
	K5H75A	HP PageWide XL Folder
	L3M58A	HP PageWide XL Folder with Tab Applicator
	MOV04A	HP PageWide XL Folder Upgrade Kit for Long Plots
	L3J69AAE	HP SmartStream Preflight Manager
	L3J71AAE	HP SmartStream Preflight Manager One-Year Subscription
	L3J75AAE	HP SmartStream Print Controller for HP PageWide XL 5000 Blueprinter
	T9B46AAE	HP SmartStream Print Controller for non-HP Large Format printers ¹⁴
	X3B47A	HP PageWide XL 5000 Blueprinter Speed Upgrade Kit
	C1Q19A	HP B41 PageWide XL Printhead
	F9J47A	HP B41 PageWide XL Cleaning Container
	F9J48A	HP B41 PageWide XL Maintenance Cartridge
Original HP PageWide XL ink cartridges	F9J72A	HP B47B 400-ml Black PageWide XL Ink Cartridge
	F9J73A	HP B47B 400-ml B1 PageWide XL Ink Cartridge
	F9J74A	HP B47B 400-ml B2 PageWide XL Ink Cartridge

Dynamic security enabled printer. Cartridges using a non-HP chip might not work and those that work today might not work in the future. More at: hp.com/go/learnaboutsupplies

Original HP large format printing materials	L4L08A	HP Universal Bond Paper, 3-in Core (FSC® certified) ¹⁵
	L4Z45A	HP Bright White Inkjet Paper, 3-in Core (FSC® certified) ¹⁵
	L5C74A	HP Universal Coated Paper, 3-in Core (FSC® certified) ¹⁵

Enjoy best-in-class support services, knowing HP works with HP PageWide XL Channel Partners to enable them to be properly trained, certified, and equipped to meet your needs. With efficient support and innovative support features, such as printer self-monitoring, predefined resolution paths, and intuitive maintenance wizards, you can work with confidence every day. For more information, please visit hp.com/go/pagewidexlservice.

HP Financial Services can help you acquire an HP PageWide printing solution and accelerate the benefits to your business. Our solutions can help you increase your flexibility by preserving cash, freeing up budgets with a monthly payment structure, and offering an easy option to upgrade to the latest model when your business is ready. For more information, please visit hp.com/hpfinancialservices.

Find the media solution that fits your business and your HP PageWide XL printer at hp.com/go/mediasolutionslocator.

Eco Highlights

- Save paper with automatic print settings and image nesting
- ENERGY STAR® certified and EPEAT Silver registered¹
- Free, convenient HP ink cartridge recycling²
- FSC®-certified papers,³ range of recyclable HP media⁴

¹ EPEAT registered where applicable and/or supported. See epeat.net for registration status and rating by country.

² Program availability varies. Please check hp.com/recycle for details.

³ BMG trademark license code FSC®-C115319, see fsc.org. HP trademark license code FSC®-C017543, see fsc.org. Not all FSC®-certified products are available in all regions. For information about HP large format printing materials, please visit HPLFMedia.com.

⁴ Can be recycled through commonly available recycling programs.

Please recycle large-format printing hardware and printing supplies.
Find out how at our website hp.com/ecosolutions

