



# HP ProDesk 400 G3 Small Form Factor PC

Give your business the strong foundation it needs for growth with the affordable and reliable HP ProDesk 400 SFF. Designed with essential security and manageability features, the HP ProDesk 400 helps keep your business growing.



HP recommends Windows 10 Pro.

- Windows 10 Pro<sup>1</sup>
- 6th Gen Intel® Core™ Processors<sup>2</sup>

## New powerful processors

- New 6th Gen Intel® Core™ processors<sup>2</sup> bring powerful processing with Intel® HD 530 Graphics. Available DDR4 memory helps meet the demands of today's businesses.

## Security from the start

- HP BIOSphere<sup>3</sup> and HP Client Security<sup>4</sup> boost security and keep critical data and systems under lock and key with customizable authentication and BIOS-level passwords.

## Tested to go the distance

- HP ProDesks are rigorously tested to help ensure reliability. During the HP Total Test Process, PCs experience 120,000 hours of performance trials to help get you through your business day.

## Make the smart investment

- The HP ProDesk 400 SFF helps affordably build a solid IT infrastructure for your growing business and fits in smaller workspaces for easy deployment.

## Featuring

- Help protect from today's security threats and maximize management and productivity features for business with Windows 10 Pro.<sup>1</sup>
- Activate, configure, patch, and update your devices from a single console.
- Make conferencing from your PC as simple as the touch of a button with the optional HP Conferencing keyboard.<sup>5</sup>
- Multiple displays have shown to help increase productivity by 35%<sup>7</sup> and the HP ProDesk 400 SFF allows you to connect two optional HP Pro Displays<sup>5</sup> right out-of-the-box.
- Reduce energy consumption and costs with ENERGY STAR® and EPEAT® Gold<sup>7</sup> certified configurations.
- Simplify technical support with Helpdesk by HP Care. Rely on cost-effective expertise that's available 24x7, covering multiple brands, devices and operating systems.<sup>8</sup>

## HP ProDesk 400 G3 Small Form Factor PC Specifications Table



<b>Form Factor</b>	Small form factor
<b>Available Operating System</b>	Windows 10 Pro 64 – HP recommends Windows 10 Pro. <sup>1</sup> Windows 10 Home 64 <sup>1</sup> Windows 8.1 Pro 64 <sup>1</sup> Windows 8.1 64 <sup>1</sup> FreeDOS 2.0
<b>Available Processors</b> <sup>3</sup>	Intel® Core™ i7-6700 with Intel HD Graphics 530 (3.4 GHz, up to 4 GHz with Intel Turbo Boost, 8 MB cache, 4 cores); Intel® Core™ i5-6600 with Intel HD Graphics 530 (3.3 GHz, up to 3.9 GHz with Intel Turbo Boost, 6 MB cache, 4 cores); Intel® Core™ i5-6500 with Intel HD Graphics 530 (3.2 GHz, up to 3.6 GHz with Intel Turbo Boost, 6 MB cache, 4 cores); Intel® Core™ i3-6320 with Intel HD Graphics 530 (3.9 GHz, 4 MB cache, 2 cores); Intel® Core™ i3-6300 with Intel HD Graphics 530 (3.8 GHz, 4 MB cache, 2 cores); Intel® Core™ i3-6100 with Intel HD Graphics 530 (3.7 GHz, 3 MB cache, 2 cores); Intel® Pentium® G4520 with Intel HD Graphics 530 (3.6 GHz, 3 MB cache, 2 cores); Intel® Pentium® G4400 with Intel HD Graphics 510 (3.3 GHz, 3 MB cache, 2 cores)
<b>Chipset</b>	Intel® H110
<b>Maximum Memory</b>	32 GB DDR4-2133 SDRAM <sup>15</sup> Transfer rates up to 2133 MT/s
<b>Memory Slots</b>	2 DIMM
<b>Internal Storage</b>	120 GB up to 512 GB SATA SSD <sup>4</sup> 120 GB up to 256 GB SATA SED SSD <sup>4</sup> 500 GB up to 2 TB SATA HDD (7200 rpm) <sup>4</sup> 500 GB (8 GB cache) up to 1 TB (8 GB cache) SATA SSHD <sup>4</sup> 128 GB up to 512 GB SATA 3D SSD <sup>4</sup>
<b>Optical Drive</b>	Slim SATA Blu-ray BDXL writer; Slim SATA DVD-ROM; Slim SATA DVD-Writer <sup>5,6</sup>
<b>Available Graphics</b>	Integrated: Intel® HD Graphics <sup>9</sup> Discrete: NVIDIA® GeForce® GT 730 (2 GB); NVIDIA® NVS™ 310 (1 GB) <sup>8,9</sup>
<b>Audio</b>	DTS Sound+™ audio management technology, HD audio with Realtek ALC221VB codec (all ports are stereo), microphone and headphone front ports (3.5 mm), line in and line out rear ports (3.5 mm), multi-streaming capable, internal speaker
<b>Expansion Slots</b>	1 PCIe 3.0 x16 low profile; 1 PCIe 2.0 x1 low profile
<b>Ports and Connectors</b>	Front: 2 USB 3.0; 1 headphone; 1 microphone Back: 2USB 3.0; 4 USB 2.0; 1 serial; 1 serial (optional); 1 parallel (optional); 2 PS/2 (keyboard and mouse); 1 VGA; 1 DisplayPort; 1 audio line in; 1 audio line out; 1 RJ-45
<b>Input Devices</b>	HP PS/2 Business Slim Keyboard; HP PS/2 Keyboard; HP USB Business Slim Keyboard; HP USB Keyboard; HP USB Conferencing Keyboard; HP USB Antimicrobial Keyboard; HP USB and PS/2 Washable Keyboard; HP USB Smart Card (CCID) Keyboard; HP Wireless Business Slim Keyboard and Mouse <sup>9</sup> HP PS/2 Mouse; HP USB Mouse; HP USB 1000 dpi Laser Mouse; HP USB and PS/2 Washable Mouse; HP USB Antimicrobial Mouse; HP USB Hardened Mouse; HP Wireless Laser Mouse <sup>9</sup>
<b>Communications</b>	LAN: Realtek RTL8111HSH-CG GbE Ethernet Controller; Intel® Ethernet I210-T1 PCIe x1 GbE network interface card (optional) WLAN: Broadcom BCM943228Z 802.11n Wireless PCIe with Bluetooth®; Broadcom BCM943228Z 802.11n Wireless PCIe; Intel® 7265 802.11ac Wireless PCIe with Bluetooth®; Intel® 7265 802.11ac Wireless PCIe <sup>7</sup>
<b>Drive Bays</b>	One SD 3 card reader (optional); One slim ODD (optional); One 3.5" or 2.5"
<b>Available Software</b>	HP business PCs are shipped with a variety of software titles including: HP Drive Encryption, HP Client Security, HP Security Manager, Microsoft Security Essentials, CyberLink Power DVD BD, Native Miracast support, HP ePrint Driver, HP Recovery Manager. Please refer to this product's quick spec document for a full list of preinstalled software. <sup>10,11,12</sup>
<b>Security Management</b>	Trusted Platform Module SLB9670TT1.2FW4.40 (TPM) 1.2 Common Criteria EAL4+ certified, field upgradeable to 2.0; SATA port disablement (via BIOS); RAID configurations; Serial, parallel, USB enable/disable (via BIOS); Optional USB port disable at factory (user configurable via BIOS); Removable media write/boot control; Power-on password (via BIOS), Setup password (via BIOS); HP Chassis (1 bay) Security Kit; Support for chassis padlocks and cable lock devices <sup>13</sup>
<b>Management Features</b>	Update BIOS via Cloud or Network (BIOS feature)
<b>Power</b>	180 W, up to 85% efficient, active PFC
<b>Dimensions</b>	95 x 270 x 296 mm (Dimensions are for tower orientation)
<b>Weight</b>	Starting at 4.43 kg (Exact weight depends on configuration)
<b>Energy Efficiency Compliance</b>	ENERGY STAR® certified and EPEAT® Gold registered configurations available <sup>14</sup>
<b>Warranty</b>	On-site Warranty: One-year (1-1-1) or three-year (3-3-3) limited warranty delivers one year or three years of on-site, next business day service for parts and labor and includes free telephone support 24 x 7. One-year and three-year onsite and labor are not available in all countries. Service offers terms up to 5 years by choosing a Care Pack. To choose the right level of service for your HP product, visit HP Care Pack Central: <a href="http://www.hp.com/go/cpc">www.hp.com/go/cpc</a>

## HP ProDesk 400 G3 Small Form Factor PC

### Recommended Accessories and Services

---

#### HP 9.5mm Desktop G2 Slim DVD-Rom Drive



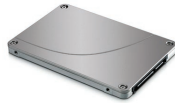
Affordably add an optical storage reader to your HP Desktop PC<sup>1</sup> with the HP 9.5mm Desktop G2 Slim DVD-ROM Drive, which connects through SATA and reads DVD and CD format media.  
**Product number: N1M41AA**

#### HP Business PC Security Lock Kit



This handy device secure HP Business PC in public locations by locking-down peripherals and preventing removal of PC chassis cover. The Lock attaches to the rear of the PC and steel cable can be used to physically connect system to an anchor point.  
**Product number: PV606AA**

#### HP 128 GB SATA 6 Solid State Drive



Boost the performance and robustness of your HP Business Desktop PC with an HP Solid State Drive. The HP Solid State Drives are a drop-in replacement for the 2.5-inch or 3.5-inch (with bracket) hard disk drive of some HP Compaq Business Desktop PCs providing many performance and durability improvements over traditional Hard Disk Drive (HDD) technology.  
**Product number: QV063AA**

#### HP 3-year Next Business Day Onsite Optional Customer Self Repair Desktop/Workstation Only Hardware Service



Receive 3 years of next business day onsite repair from an HP-qualified technician for your computing device, if the issue cannot be solved remotely. For more information on Care Pack services, please visit [www.hp.com/go/cpc](http://www.hp.com/go/cpc).  
**Product number: UE379E**

---

## Messaging Footnotes

- <sup>1</sup> Not all features are available in all editions or versions of Windows. Systems may require upgraded and/or separately purchased hardware, drivers, software or BIOS update to take full advantage of Windows functionality. Windows 10 is automatically updated, which is always enabled. ISP fees may apply and additional requirements may apply over time for updates. See <http://www.microsoft.com>.
- <sup>2</sup> Multi-Core is designed to improve performance of certain software products. Not all customers or software applications will necessarily benefit from use of this technology. 64-bit computing system required. Performance will vary depending on your hardware and software configurations. Intel's numbering is not a measurement of higher performance.
- <sup>3</sup> HP BIOSphere features may vary depending on the PC platform & configuration.
- <sup>4</sup> Requires Windows.
- <sup>5</sup> Sold separately or as an optional feature.
- <sup>6</sup> "Observed Productivity, Efficiency and User Satisfaction when Using Multiple or Large Displays," Koala LLC Ergonomics Consulting, November 6, 2012.
- <sup>7</sup> EPEAT® Gold registered where applicable. EPEAT registration varies by country. See [www.epeat.net](http://www.epeat.net) for registration status by country.
- <sup>8</sup> HP Care Services are optional. Service levels and response times for HP Care Services may vary depending on your geographic location. Service starts on date of hardware purchase. Restrictions and limitations apply. For details, visit [www.hp.com/go/cpc](http://www.hp.com/go/cpc). HP services are governed by the applicable HP terms and conditions of service provided or indicated to Customer at the time of purchase. Customer may have additional statutory rights according to applicable local laws, and such rights are not in any way affected by the HP terms and conditions of service or the HP Limited Warranty provided with your HP Product.

## Technical Specifications Footnotes

- <sup>1</sup> Not all features are available in all editions or versions of Windows. Systems may require upgraded and/or separately purchased hardware, drivers, software or BIOS update to take full advantage of Windows functionality. Windows 10 is automatically updated, which is always enabled. ISP fees may apply and additional requirements may apply over time for updates. See <http://www.microsoft.com>.
- <sup>2</sup> Multicore is designed to improve performance of certain software products. Not all customers or software applications will necessarily benefit from use of this technology. Performance and clock frequency will vary depending on application workload and your hardware and software configurations. Intel's numbering is not a measurement of higher performance.
- <sup>4</sup> For storage drives, GB = 1 billion bytes, TB = 1 trillion bytes. Actual formatted capacity is less. Up to 16 GB (for Windows 7) and up to 36 GB (for Windows 8.1 and 10) of system disk is reserved for system recovery software.
- <sup>5</sup> Duplication of copyrighted material is strictly prohibited. Actual speeds may vary. Double Layer media compatibility will widely vary with some home DVD players and DVD-ROM drives. Note that DVD-RAM cannot read or write to 2.6GB Single Sided/5.2 Double Sided-Version 1.0 Media.
- <sup>6</sup> With Blu-Ray drive XL, certain disc, digital connection, compatibility and performance issues may arise, and do not constitute defects in the product. Flawless playback on all systems is not guaranteed. In order for some Blu-ray titles to play, they may require an HDCP path and HDCP display. HD-DVD movies cannot be played on this BDXL Drive.
- <sup>7</sup> Wireless cards are optional or add-on features and requires separately purchased wireless access point and internet service. Availability of public wireless access points limited. The specifications for the 802.11ac WLAN are draft specifications and are not final. If the final specifications differ from the draft specifications, it may affect the ability of this desktop PC to communicate with other 802.11ac WLAN devices.
- <sup>8</sup> HD content required to view HD images.
- <sup>9</sup> Optional or add-on feature.
- <sup>10</sup> HP ePrint requires an Internet connection to HP web-enabled printer and HP ePrint account registration (for a list of eligible printers, supported documents and image types and other HP ePrint details, see [www.hp.com/go/businessmobileprinting](http://www.hp.com/go/businessmobileprinting)). HP PageLift requires Windows 7 or higher.
- <sup>11</sup> Microsoft Security Essentials requires Windows 7 and internet access.
- <sup>12</sup> Miracast is a wireless technology your PC can use to project your screen to TVs, projectors, and streaming media players that also support Miracast. You can use Miracast to share what you're doing on your PC and present a slide show. Miracast is available for Windows 8 and Windows 10. For more information: <http://windows.microsoft.com/en-us/windows-8/project-wireless-screen-miracast>.
- <sup>13</sup> This product ships with TPM 1.2 with option to upgrade to TPM 2.0. Upgrade utility is expected to be available by the end of 2015 via HP Customer Support.
- <sup>14</sup> EPEAT® registered where applicable. EPEAT registration varies by country. See [www.epeat.net](http://www.epeat.net) for registration status by country.
- <sup>15</sup> Maximum memory capacities assume Windows 64-bit operating systems or Linux. With Windows 32-bit operating systems, memory above 3 GB may not all be available due to system resource requirements.

**Sign up for updates**  
[hp.com/go/getupdated](http://hp.com/go/getupdated)

© Copyright 2017 HP Development Company, L.P. The information contained herein is subject to change without notice. The only warranties for HP products and services are set forth in the express warranty statements accompanying such products and services. Nothing herein should be construed as constituting an additional warranty. HP shall not be liable for technical or editorial errors or omissions contained herein.

ENERGY STAR and the ENERGY STAR mark are registered trademarks owned by the U.S. Environmental Protection Agency. Bluetooth is a trademark of its proprietor used by Hewlett-Packard Company under license. Microsoft and Windows are U.S. trademarks of the Microsoft group of companies. Intel and Core are trademarks of Intel Corporation in the U.S. and other countries. Linux® is the registered trademark of Linus Torvalds in the U.S. and other countries. For DTS patents, see <http://patents.dts.com>. Manufactured under license from DTS Licensing Limited. DTS, the Symbol, & DTS and the Symbol together are registered trademarks, and DTS Sound+ is a trademark of DTS, Inc. © DTS, Inc. All Rights Reserved. All other trademarks are the property of their respective owners.

