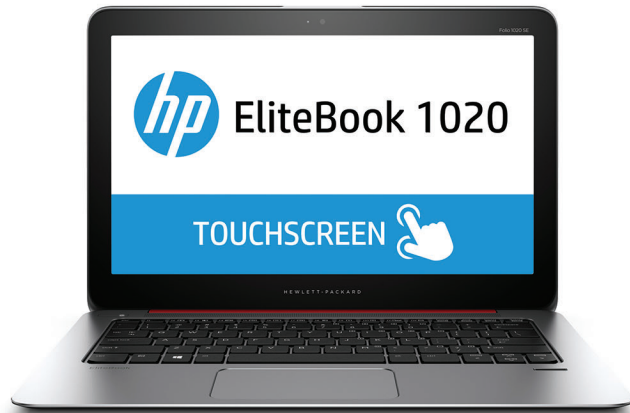




# HP EliteBook Folio 1020 Bang & Olufsen Limited Edition

The HP EliteBook Folio 1020 Bang & Olufsen Limited Edition is an impressively thin and light business-class notebook with state-of-the-art Audio by Bang & Olufsen. It's fully equipped with HP's leading security and manageability solutions and Windows 10 Pro.<sup>1</sup>



- Windows 10 Pro<sup>1</sup>
- 12.5-inch diagonal display

## Remote conferencing made easy

- Collaborate with colleagues around the world using optional Skype for Business<sup>2</sup> and an HD webcam for an impressive visual experience. Audio by Bang & Olufsen, and HP Noise Reduction Software combine to produce an immersive audio experience.

## Sleek, slim, smart

- Show off the dark ash color scheme with copper colored accents on a notebook that not only has the smarts, but looks the part with a sleek diamond cut design.

## Streamlined security and management

- Rely on powerful security, comprehensive management solutions, and new Windows 10 Pro<sup>1</sup> features to help keep devices, data, and identities secure. Easily manage your devices with powerful tools from HP including HP Touchpoint Manager.<sup>3</sup>

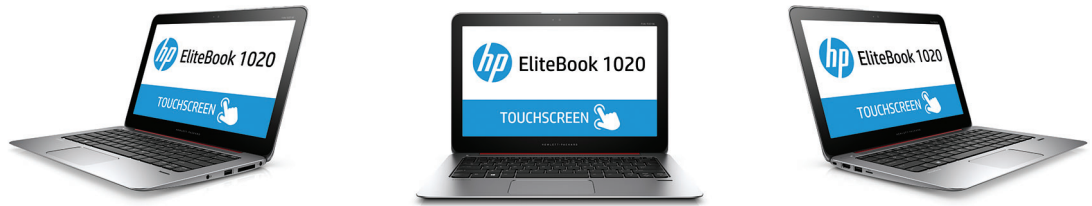
## Tough and ready

- Confidently take on the rigors of everyday use and travel with a resilient EliteBook with long battery life that is engineered with no moving parts and designed to pass MIL-STD 810G durability tests for drop, shock, vibration and more.<sup>4</sup>

## Featuring

- Utilize dual microphones and HP premium speakers to help become more productive with Cortana,<sup>5</sup> and HP collaboration and conferencing solutions.
- See it all with brilliant clarity on a 12.5" diagonal high-resolution QHD touchscreen.<sup>2</sup>
- Enjoy two USB 3.0 charging ports, a MicroSD expansion slot and HDMI video output.
- Keep your connection with WiDi,<sup>7</sup> Miracast,<sup>8</sup> and WLAN 802.11ac/Bluetooth® 4.0 combo.<sup>9</sup> Plus, easily tether to your phone for mobile broadband on the road.
- After hours of user studies, HP engineered the HP Premium Keyboard with a remarkable balance of comfort and feedback allowing users to concentrate on the task at hand.
- Elevate your EliteBook experience by adding useful optional accessories like an ultra-slim docking station, Elite curved display, HP Slim AC Travel Adapter, wireless keyboard, and more.<sup>2</sup>
- Take advantage of HP's Elite Support<sup>10</sup> from knowledgeable US based technical experts and HP's limited warranty.
- Simplify technical support with Helpdesk by HP Care Services. Rely on cost-effective expertise that's available 24x7, covering multiple brands, devices and operating systems.<sup>11</sup>

## HP EliteBook Folio 1020 Bang & Olufsen Limited Edition Specifications Table



<b>Available Operating System</b>	Windows 10 Pro 64 <sup>1</sup>
<b>Processor Family <sup>2</sup></b>	Intel® Core™ M processor
<b>Processor Technology</b>	Intel® vPro™ Technology
<b>Available Processors <sup>2,15</sup></b>	Intel® Core™ M-5Y71 with Intel HD Graphics 5300 (1.2 GHz, up to 2.9 GHz with Intel Turbo Boost Technology, 4 MB cache, 2 cores)
<b>Chipset</b>	Chipset is integrated with processor
<b>Maximum Memory</b>	8 GB LPDDR3-1600 SDRAM Transfer rates up to 1600 MT/s. Internal component upgrades to memory are not available after factory configuration.
<b>Internal Storage</b>	up to 512 GB M.2 SSD <sup>3,4</sup>
<b>Display</b>	12.5" diagonal QHD UWVA ultra slim LED-backlit touch screen (2560 x 1440) <sup>7</sup>
<b>Available Graphics</b>	Integrated: Intel® HD Graphics 5300 <sup>7</sup>
<b>Audio</b>	Audio by Bang & Olufsen; Digital dual-array microphone
<b>Wireless Technologies</b>	Intel® Dual Band Wireless-AC 7265 802.11a/b/g/n/ac (2x2) WiFi and Bluetooth® 4.0 Combo <sup>5,6</sup> (Internal component upgrades to connectivity are not available after factory configuration.)
<b>Communications</b>	NFC; Ethernet via accessory dongle (optional)
<b>Expansion Slots</b>	1 microSD (supports SD, SDHC, SDXC)
<b>Ports and Connectors</b>	2 USB 3.0 charging; 1 HDMI; 1 docking connector; 1 AC power; 1 headphone/microphone combo (Ethernet/VGA available via accessory dongle (optional) using docking connector port)
<b>Input Device</b>	Spill-resistant backlit keyboard and drain Glass ForcePad™ (with chemically etched surface) with on/off button, supports 2-way scroll with legend, taps and gestures enabled by default, two-finger scrolling, two finger zoom (pinch)
<b>Camera</b>	720p HD webcam <sup>7</sup>
<b>Available Software</b>	Buy Office; HP BIOSphere with HP Sure Start; HP Wireless Hotspot; HP PageLift; HP Recovery Manager; HP Support Assistant; HP ePrint; HP SoftPak Download Manager; CyberLink Power DVD; CyberLink YouCam BE; HP Touchpoint Manager; Foxit PhantomPDF Express for HP; HP Connection Manager; HP ePrint Driver; HP File Sanitizer; Intel WiDi Software; Lync Optimized; HP Noise Reduction Software 8,9,10,11,12,13
<b>Security Management</b>	TPM 1.2 (Infineon, soldered down); Fingerprint reader; Full Volume Encryption; Preboot Authentication (Password)
<b>Power</b>	45 W Smart AC adapter; 45 W Smart AC adapter 2-prong (Japan only); 65 W Smart EM AC adapter (PRC (China), India only); 65 W Slim AC adapter (Australia and Japan only)
<b>Dimensions</b>	31 x 21 x 1.57 cm
<b>Weight</b>	Starting at 1.21 kg (Weight will vary by configuration.)
<b>Environmental</b>	Low halogen <sup>14</sup>
<b>Energy Efficiency Compliance</b>	ENERGY STAR® certified configurations available
<b>Expansion Solutions</b>	HP UltraSlim Side Docking Station (optional); HP Docking to VGA + Ethernet Adapter (optional)

## HP EliteBook Folio 1020 Bang & Olufsen Limited Edition

### Recommended Accessories and Services

---

#### HP UltraSlim Docking Station



Designed exclusively for ultraslim HP EliteBook Notebook PCs, the HP UltraSlim Docking Station expands display, network, and device connectivity so you can be more productive throughout the day—all through a simple one-click slide-in side dock.

**Product number: D9Y32AA**

---

#### HP Dock Connector to Ethernet and VGA Adapter

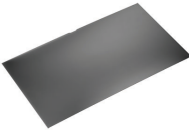


Expand what you can do with your HP EliteBook Notebook PC by using its side dock connector to add Ethernet and VGA connectivity with a single handy adapter.

**Product number: G7U78AA**

---

#### HP 12.5-in Privacy Filter



Help protect your notebook data from prying eyes with a privacy filter.

**Product number: J6E64AA**

---

#### HP 3-year Travel Next Business Day Low End Notebook Only Hardware Support



This HP services offers notebook users on the go prompt, reliable coverage in major geographies of the world, for 3 years. For more information on Care Pack services, please visit [www.hp.com/go/cpc](http://www.hp.com/go/cpc).

**Product number: UC909E**

---

## Messaging Footnotes

<sup>1</sup> Not all features are available in all editions or versions of Windows. Systems may require upgraded and/or separately purchased hardware, drivers, software or BIOS update to take full advantage of Windows functionality. Windows 10 is automatically updated, which is always enabled. ISP fees may apply and additional requirements may apply over time for updates. See <http://www.microsoft.com>.

<sup>2</sup> Sold separately or as an optional feature.

<sup>3</sup> HP Touchpoint Manager requires purchase of a subscription and supports Android™, iOS and Windows 7 or higher operating systems and PCs, notebooks, tablets and smartphones from various manufacturers. Not available in all countries see [www.hp.com/touchpoint](http://www.hp.com/touchpoint) for availability information.

<sup>4</sup> MIL STD 810G testing is not intended to demonstrate fitness for U.S. Department of Defense contract requirements or for military use. Test results are not a guarantee of future performance under these test conditions. Damage under the MIL STD test conditions or any accidental damage requires an optional HP Accidental Damage Protection Care Pack.

<sup>5</sup> Some advanced features including voice supported Cortana, inking, and Continuum require more advanced hardware. Cortana experience may vary by device. See <http://www.microsoft.com> and [windows.com/windows10upgrade](http://windows.com/windows10upgrade).

<sup>7</sup> Integrated Intel WiDi feature is available on select configurations only and requires separately purchased projector, TV or computer monitor with an integrated or external WiDi receiver. External WiDi receivers connect to the projector, TV or computer monitor via a standard HDMI cable, also sold separately.

<sup>8</sup> Miracast is a wireless technology your PC can use to project your screen to TVs, projectors, and streaming media players that also support Miracast. You can use Miracast to share what you're doing on your PC and present a slide show. For more information: <http://windows.microsoft.com/en-us/windows-8/project-wireless-screen-miracast>.

<sup>9</sup> Wireless access point and Internet access required. Availability of public wireless access points limited. The specifications for the 802.11ac WLAN are draft specifications and are not final. If the final specifications differ from the draft specifications, it may affect the ability of the notebook to communicate with other 802.11ac WLAN devices.

<sup>10</sup> Elite support only available in the US and Canada in English.

<sup>11</sup> HP Care Services are optional. Service levels and response times for HP Care Pack Services may vary depending on your geographic location. Service starts on date of hardware purchase. Restrictions and limitations apply. For details, visit [www.hp.com/go/cpc](http://www.hp.com/go/cpc). HP services are governed by the applicable HP terms and conditions of service provided or indicated to Customer at the time of purchase. Customer may have additional statutory rights according to applicable local laws, and such rights are not in any way affected by the HP terms and conditions of service or the HP Limited Warranty provided with your HP Product.

## Technical Specifications Footnotes

<sup>1</sup> Not all features are available in all editions or versions of Windows. Systems may require upgraded and/or separately purchased hardware, drivers, software or BIOS update to take full advantage of Windows functionality. Windows 10 is automatically updated, which is always enabled. ISP fees may apply and additional requirements may apply over time for updates. See <http://www.microsoft.com>.

<sup>2</sup> Multi-Core is designed to improve performance of certain software products. Not all customers or software applications will necessarily benefit from use of this technology. Performance and clock frequency will vary depending on application workload and your hardware and software configurations. Intel's numbering is not a measurement of higher performance.

<sup>3</sup> For hard drives and solid state drives (SSD), GB = 1 billion bytes. TB = 1 trillion bytes. Actual formatted capacity is less. Up to 30 GB (for Windows 10) is reserved for system recovery software.

<sup>4</sup> Internal component upgrades for storage and drives are not available after factory configuration.

<sup>5</sup> Wireless access point and Internet service is required and is not included. Availability of public wireless access points limited.

<sup>6</sup> 802.11 + Bluetooth combos sold separately or as an optional feature. The specifications for the 802.11ac WLAN are draft specifications and are not final. If the final specifications differ from the draft specifications, it may affect the ability of the notebook to communicate with other 802.11ac WLAN devices.

<sup>7</sup> High definition (HD) content is required to view high-definition images.

<sup>8</sup> HP ePrint requires an internet connection to HP web-enabled printer and HP ePrint account registration. For a list of eligible printers, supported documents and image types and other HP ePrint details, see [www.hp.com/go/businessmobileprinting](http://www.hp.com/go/businessmobileprinting).

<sup>9</sup> The HP Wireless Hotspot application requires an active Internet connection and separately purchased data plan. While HP Wireless Hotspot is active, on-device applications will continue to work and will use the same data plan as the wireless hotspot. Wireless hotspot data usage may incur additional charges. Check with your service provider for plan details. Requires Windows 8.1 or HP Connection Manager for Windows 7.

<sup>10</sup> HP PageLift requires Windows 7 or higher edition.

<sup>11</sup> HP Touchpoint Manager requires purchase of a subscription and supports Android™, iOS and Windows 7 or higher operating systems and PCs, notebooks, tablets and smartphones from various manufacturers. Not available in all countries see [www.hp.com/touchpoint](http://www.hp.com/touchpoint) for availability information.

<sup>12</sup> File Sanitizer: For the use cases outlined in the DOD 5220.22-M Supplement. Does not support Solid State Drives (SSDs). Initial setup required. Web history deleted only in Internet Explorer and Firefox browsers and must be user enabled. With Windows 8.1, user must turn off Enhanced Protection Mode in IE11 for shred on browser close feature.

<sup>13</sup> Foxit PhantomPDF Express for HP is read only.

<sup>14</sup> External power supplies, power cords, cables and peripherals are not low halogen. Service parts obtained after purchase may not be low halogen.

<sup>15</sup> Some vPro functionality, such as Intel® Active management technology and Intel Virtualization technology, requires additional 3rd party software in order to run. Availability of future "virtual appliances" applications for Intel vPro technology is dependent on 3rd party software providers. Microsoft Windows required.

## Sign up for updates

[hp.com/go/getupdated](http://hp.com/go/getupdated)

© Copyright 2015 HP Development Company, L.P. The information contained herein is subject to change without notice. The only warranties for HP products and services are set forth in the express warranty statements accompanying such products and services. Nothing herein should be construed as constituting an additional warranty. HP shall not be liable for technical or editorial errors or omissions contained herein.

Bluetooth is a trademark of its proprietor and used by Hewlett-Packard Company under license. Intel and Core are trademarks of Intel Corporation in the U.S. and other countries. Qualcomm and Gobi are trademarks of Qualcomm Incorporated, registered in the United States and other countries. Trademarks of Qualcomm Incorporated are used with permission. For DTS patents, see <http://patents.dts.com>. Manufactured under license from DTS Licensing Limited. DTS, the Symbol, & DTS and the Symbol together are registered trademarks, and DTS Studio Sound is a trademark of DTS, Inc. © DTS, Inc. All Rights Reserved. ENERGY STAR is a registered trademark of the U.S. Environmental Protection Agency. All other trademarks are the property of their respective owners.

