



# HP ProOne 400 G2 20-inch Touch All-in-One PC

Easy to deploy, sleek, and feature-rich, the HP ProOne 400 20" All-in-One PC with business-class collaboration, optional touch, manageability, and security features is a sound investment.



HP recommends Windows 10 Pro.

- Windows 10 Pro<sup>1</sup>
- Screen Size: 20" diagonal

## Sleek, elegant design

Stylish design featuring extensive cable management and clean lines makes this AiO suitable for a front desk or an open office. The touch model has a 20" diagonal IPS display<sup>3</sup> with edge-to-edge glass for space-constrained work environments.

## Power like a tower

New 6th Generation Intel® Core™ 65W processors<sup>2</sup> bring high end processing power to the AiO that evokes tower-like performance.

## Executive-class collaboration

Interact naturally with your PC using ten-point capacitive touch and Cortana<sup>4</sup> on Windows 10.<sup>1</sup> Enjoy impressive collaboration tools like Skype for Business, HP Noise Reduction Software, and a 1 MP HD webcam.

## Security from the start

Stay up and running with business-class security solutions, including TPM, HP BIOSphere<sup>5</sup> and HP Client Security.<sup>6</sup> Optional security locks, privacy screens, and encrypted drives<sup>3</sup> also help keep data and your investment safe.

## Featuring

- Easy access to critical parts, rigorous testing, and HP temperature control technology helps ensure your AiO withstands tough work environments.
- Reduce the complexity of administration. HP Touchpoint Manager,<sup>7</sup> Windows 10<sup>1</sup> manageability features, and HP Common Core BIOS help you easily manage assets.
- Pair this space-saving AiO with the stand option<sup>3</sup> to fit your workspace and use case.
- Help suppress ambient noise including keyboard clicks with HP Noise Reduction Software.
- DTS Studio Sound™ lets you make the most of virtual conferencing.
- Make conferencing from your PC as simple as the touch of a button with the optional HP Conferencing Keyboard.<sup>3</sup>
- HP BIOSphere<sup>5</sup> and HP Client Security<sup>6</sup> help keep critical data and systems protected with customizable security.



## HP ProOne 400 G2 20-inch Touch All-in-One PC Specifications Table



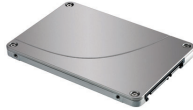
<b>Form Factor</b>	All-in-one
<b>Available Operating System</b>	Windows 10 Pro 64 – HP recommends Windows 10 Pro. <sup>1</sup> Windows 10 Home 64 <sup>1</sup> Windows 8.1 Pro 64 <sup>1</sup> Windows 8.1 64 <sup>1</sup> Windows 7 Professional 64 (available through downgrade rights from Windows 10 Pro) <sup>2</sup> Windows 7 Professional 32 (available through downgrade rights from Windows 10 Pro) <sup>2</sup> Windows 7 Professional 64 <sup>1</sup> Windows 7 Professional 32 <sup>1</sup> FreeDOS 2.0 Windows 7 Home 32 <sup>1</sup> FreeDOS 2.0
<b>Available Processors<sup>3</sup></b>	Intel® Core™ i7-6700 with Intel HD Graphics 530 (3.4 GHz, up to 4.0 GHz with Intel Turbo Boost, 8 MB cache, 4 cores); Intel® Core™ i5-6600 with Intel HD Graphics 530 (3.3 GHz, up to 3.9 GHz with Intel Turbo Boost, 6 MB cache, 4 cores); Intel® Core™ i5-6500 with Intel HD Graphics 530 (3.2 GHz, up to 3.6 GHz with Intel Turbo Boost, 6 MB cache, 4 cores); Intel® Core™ i3-6320 with Intel HD Graphics 530 (3.9 GHz, 4 MB cache, 2 cores); Intel® Core™ i3-6300 with Intel HD Graphics 530 (3.8 GHz, 4 MB cache, 2 cores); Intel® Core™ i3-6100 with Intel HD Graphics 530 (3.7 GHz, 3 MB cache, 2 cores); Intel® Pentium® G4520 with Intel HD Graphics 530 (3.6 GHz, 3 MB cache, 2 cores); Intel® Pentium® G4500 with Intel HD Graphics 530 (3.5 GHz, 3 MB cache, 2 cores); Intel® Pentium® G4400 with Intel HD Graphics 510 (3.3 GHz, 3 MB cache, 2 cores)
<b>Chipset</b>	Intel® H110
<b>Maximum Memory</b>	32 GB DDR4-2133 SDRAM (Transfer rates up to 2133 MT/s)
<b>Memory Slots</b>	2 SODIMM
<b>Internal Storage</b>	500 GB up to 1 TB SATA (7200 rpm) <sup>4</sup> 500 GB (8 GB cache) up to 1 TB (8 GB cache) SATA SSHD <sup>4</sup> up to up to 120 GB up to 256 GB SATA SED SSD <sup>4</sup>
<b>Optical Drive</b>	Slim DVD-ROM; Slim DVD-Writer <sup>5</sup>
<b>Display</b>	20" diagonal TN WLED backlit 10-point capacitive touch LCD (1600 x 900)
<b>Available Graphics</b>	Integrated: Intel® HD Graphics <sup>7</sup> (Intel® HD Graphics integrated on processor)
<b>Audio</b>	DTS Studio Sound™ audio management technology, HD audio with Realtek ALC3228 codec (all ports are stereo), microphone and headphone side ports (3.5 mm), audio line-out rear port (3.5 mm), multi-streaming capable, internal speaker.
<b>Communications</b>	LAN: Realtek RTL8111HSH-CG GbE Ethernet Controller WLAN: Intel® 7265 802.11ac wireless M.2 with Bluetooth®; Intel® 7265 802.11ac wireless M.2; Broadcom BCM943228Z 802.11n wireless M.2 with Bluetooth®; Broadcom BCM943228Z 802.11n wireless M.2 <sup>6</sup>
<b>Ports and Connectors</b>	Left: 2 USB 3.0 (1 charging); 1 SD 3 media card reader (optional); 1 headphone; 1 microphone Back: 2 USB 3.0; 2 USB 2.0; 1 DisplayPort 1.2; 1 RJ-45; 1 audio line out; 1 serial (optional); 2 PS/2 (keyboard & mouse) optional
<b>Internal Drive Bays</b>	One 2.5"
<b>External Drive Bays</b>	One slim ODD; One SD 3 card reader (optional)
<b>Camera</b>	1 MP with dual-microphone array (1920 x 1080) <sup>8</sup>
<b>Available Software</b>	HP business PCs are shipped with a variety of software titles including: HP Drive Encryption (FIPS 140-2), HP Client Security, HP Security Manager, Microsoft Security Essentials, CyberLink Power DVD BD, Native Miracast Support, HP ePrint Driver, HP Recovery Manager, Foxit PhantomPDF Express. Please refer to this product's quick spec document for a full list of preinstalled software. <sup>9,10,11</sup>
<b>Security Management</b>	HP Touchpoint Manager; Infineon TPM SLB9670 1.2/2.0; Lock slot; Lockable port cover; Security Loop; Support for Noble Locking Plate; Intrusion detection (optional); HP Keyed Cable Lock (optional); HP BIOSphere; Trusted Platform Module (TPM) 1.2/2.0 (Common Criteria EAL4+ certified); SATA port disablement (via BIOS); DriveLock and Automatic DriveLock; RAID (available as a configurable option); Serial, parallel, USB enable/disable (via BIOS); Optional USB port disable at factory (user configurable via BIOS); Removable media write/boot control; Power-on password (via BIOS); Setup password (via BIOS) <sup>12</sup>

<b>Management Features</b>	Intel Standard Manageability (select models); Update BIOS via Cloud or Network (BIOS feature); HP TouchPoint Manager
<b>Power</b>	120 W, up to 89% efficient, active PFC (external)
<b>Dimensions</b>	19.55 x 13.68 x 2.31 in (Without stand) 496.71 x 347.5 x 58.7 mm (Without stand)
<b>Weight</b>	Starting at 12.01 lb (Starting weight without stand. Exact weight depends on configuration.) Starting at 5.45 kg (Without stand. Exact weight depends on configuration.)
<b>Environmental</b>	Low halogen <sup>14</sup>
<b>Energy Efficiency Compliance</b>	ENERGY STAR <sup>®</sup> certified and EPEAT <sup>®</sup> registered configurations available <sup>13</sup>

## HP ProOne 400 G2 20-inch Touch All-in-One PC

### Accessories and services (not included)

#### HP 500GB Solid State Hybrid Drive (SSHD)



Get the responsiveness of solid state memory and the capacity of a hard drive in a highly affordable package with the HP 500GB SATA 6G 2.5 (8GB Cache) solid state hybrid drive (SSHD), which delivers fast boot-up, shut down, and application loading.

**Product number: E1C62AA**

#### HP 3D 256GB SATA Solid State Drive



Expand the storage capabilities of your desktop with the HP 3D 256 GB SATA SSD<sup>1</sup>, which includes 3D VNAND flash for impressive read/write performance and reliability plus the same solid performance you already get from current from SSD drives.

**Product number: N1M49AA**

#### HP USB Conference Keyboard



Drive your Microsoft Lync voice and video calls directly from your HP USB Conference Keyboard and connect, disconnect, and manage your calls and videoconferencing settings with simple dedicated keys<sup>1</sup>.

**Product number: N8N57AA**

#### HP 8GB SODIMM DDR4 Memory



Boost the capabilities of your HP Business Desktop PC and improve system performance and application responsiveness with low-power, high-speed DDR4 memory from HP.

**Product number: P1N54AA**

#### HP Single Monitor Arm



The HP Single Monitor Arm is the perfect desk accessory for your work life. Sleek and streamlined, the HP Single Monitor Arm is designed to complement the way you work.

**Product number: BT861AA**

#### HP 3 Year Recover & Restore Service



HP Recover & Restore Service includes recovery of data in the event of data loss due to mechanical failure, accidental deletion, software crash, or malware; onsite operating system restoration and easy access to HP-certified remote diagnosis and troubleshooting. Get help with installation, setup, sync, and troubleshooting for computer operating systems and common software applications.

**Product number: U9AN7E**

## Messaging Footnotes

- <sup>1</sup> Not all features are available in all editions or versions of Windows. Systems may require upgraded and/or separately purchased hardware, drivers and/or software to take full advantage of Windows functionality. Windows 10 is automatically updated, which is always enabled. ISP fees may apply and additional requirements may apply over time for updates. See <http://www.microsoft.com>.
- <sup>2</sup> Multi-Core is designed to improve performance of certain software products. Not all customers or software applications will necessarily benefit from use of this technology. 64-bit computing system required. Performance and clock frequency will vary depending on application workload and your hardware and software configurations. Intel's numbering is not a measurement of higher performance.
- <sup>3</sup> Sold separately or as an optional feature.
- <sup>4</sup> Cortana experience may vary by device, region. Some features including voice supported Cortana, inking, and Continuum require more advanced hardware. See [www.hp.com/go/windows10upgrade](http://www.hp.com/go/windows10upgrade). Apps sold separately.
- <sup>5</sup> HP BIOSphere features may vary depending on the PC platform & configuration.
- <sup>6</sup> Requires Windows.
- <sup>7</sup> HP Touchpoint Manager requires purchase of a subscription and supports Android™, iOS and Windows 7 or higher operating systems and PCs, notebooks, tablets and smartphones from various manufacturers. Not available in all countries see [www.hp.com/touchpoint](http://www.hp.com/touchpoint) for availability information..

## Technical Specifications Footnotes

- <sup>1</sup> Not all features are available in all editions or versions of Windows. Systems may require upgraded and/or separately purchased hardware, drivers, software or BIOS update to take full advantage of Windows functionality. Windows 10 is automatically updated, which is always enabled. ISP fees may apply and additional requirements may apply over time for updates. See <http://www.microsoft.com>.
- <sup>2</sup> This system is preinstalled with Windows 7 Professional software and also comes with a license and media for Windows 10 Pro software. You may only use one version of the Windows software at a time. Switching between versions will require you to uninstall one version and install the other version. You must back up all data (files, photos, etc.) before uninstalling and installing operating systems to avoid loss of your data.
- <sup>3</sup> Multi-Core is designed to improve performance of certain software products. Not all customers or software applications will necessarily benefit from use of this technology. 64-bit computing system required. Performance will vary depending on your hardware and software configurations. Intel's numbering is not a measurement of higher performance.
- <sup>4</sup> For storage drives, GB = 1 billion bytes. TB = 1 trillion bytes. Actual formatted capacity is less. Up to 16 GB (for Windows 7) and up to 36 GB (for Windows 8.1 and 10) of system disk is reserved for system recovery software.
- <sup>5</sup> Duplication of copyrighted material is strictly prohibited. Actual speeds may vary. Double Layer media compatibility will widely vary with some home DVD players and DVD-ROM drives. Note that DVD-RAM cannot read or write to 2.6GB Single Sided/5.2 Double Sided-Version 1.0 Media.
- <sup>6</sup> Wireless cards are optional or add-on features and requires separately purchased wireless access point and internet service. Availability of public wireless access points limited. The specifications for the 802.11ac WLAN are draft specifications and are not final. If the final specifications differ from the draft specifications, it may affect the ability of this desktop PC to communicate with other 802.11ac WLAN devices.
- <sup>7</sup> HD content required to view HD images.
- <sup>8</sup> Optional or add-on feature.
- <sup>9</sup> HP ePrint requires an Internet connection to HP web-enabled printer and HP ePrint account registration (for a list of eligible printers, supported documents and image types and other HP ePrint details, see [www.hp.com/go/businessmobileprinting](http://www.hp.com/go/businessmobileprinting)). HP PageLift requires Windows 7 or higher.
- <sup>10</sup> Microsoft Security Essentials requires Windows 7 and internet access.
- <sup>11</sup> HP Drive Encryption requires Windows. Data is protected prior to Drive Encryption login. Turning the PC off or into hibernate logs out of Drive Encryption and prevents data access.
- <sup>12</sup> This product ships with TPM 1.2 with option to upgrade to TPM 2.0. Upgrade utility is expected to be available by the end of 2015 via HP Customer Support.
- <sup>13</sup> EPEAT® registered where applicable. EPEAT registration varies by country. See [www.epeat.net](http://www.epeat.net) for registration status by country.
- <sup>14</sup> External power supplies, power cords, cables and peripherals are not low halogen. Service parts obtained after purchase may not be low halogen.

**Sign up for updates**  
[hp.com/go/getupdated](http://hp.com/go/getupdated)

**Learn more at**  
[hp.com](http://hp.com)

© Copyright 2015. HP Development Company, L.P. The information contained herein is subject to change without notice. The only warranties for HP products and services are set forth in the express warranty statements accompanying such products and services. Nothing herein should be construed as constituting an additional warranty. HP shall not be liable for technical or editorial errors or omissions contained herein.

ENERGY STAR and the ENERGY STAR mark are registered trademarks owned by the U.S. Environmental Protection Agency. Bluetooth is a trademark of its proprietor used by Hewlett-Packard Company under license. Microsoft and Windows are U.S. trademarks of the Microsoft group of companies. Intel and Core are trademarks of Intel Corporation in the U.S. and other countries. For DTS patents, see <http://patents.dts.com>. Manufactured under license from DTS Licensing Limited. DTS, the Symbol, & DTS and the Symbol together are registered trademarks, and DTS Studio Sound is a trademark of DTS, Inc. © DTS, Inc. All Rights Reserved. All other trademarks are the property of their respective owners.

