



# HP ProDesk 600 G2 Microtower PC

The HP ProDesk 600 MT/SFF delivers value with a balance of performance and expandability for businesses with commercial-class productivity, reliability, security, and manageability needs.

HP recommends Windows 10 Pro.

- Windows 10 Pro<sup>1</sup>
- Intel® 6th Gen Core™ Processors<sup>2</sup>



## Perform at the speed of work

Power through your day with speed and performance. Get the latest in processing technology with your choice of 6th Generation Intel® Core™ processors<sup>2</sup> and Intel® HD 530 Graphics.

## Security inside and out

Help keep your PC safe with optional security accessories<sup>3</sup> to deter theft and stay up and running with business-class security solutions, including TPM, HP BIOSphere<sup>4</sup> and HP Client Security.<sup>5</sup>

## Ready to go the distance

HP ProDesks are rigorously tested to help ensure reliability. During the HP Total Test Process, PCs experience 120,000 hours of performance trials to help get you through your business day.

## The right balance

The HP ProDesk 600 Desktop MT/SFF delivers powerful performance, security, and manageability at a value that enables you to keep focused on your businesses.

## Featuring

- Help secure the future of your modern business. Modern PCs from HP make the most of Windows 10 Pro<sup>1</sup> to help protect you from today's security threats and maximize management and productivity features for business.
- Help manage the fleet with Intel® Standard Manageability and reduce the burden on IT resources with HP's Common Core BIOS that allows standard manageability across HP Desktops and HP Notebooks.
- Extend your business investments with a long life cycle and platform stability.
- Make conferencing from your PC as simple as the touch of a button with the optional HP Conferencing Keyboard.<sup>5</sup>
- Give yourself room to grow with ease with multiple expansion slots, ports and connectors.
- HP helps you preserve your time and optimize your resources with expert configuration and deployment services that bring you fast, accurate, and globally standardized IT solutions.
- Reduce power consumption and costs with ENERGY STAR® certified and EPEAT® Gold<sup>6</sup> qualified configurations.
- Help increase productivity by up to 35%<sup>7</sup> with support for up to three external Pro Displays.<sup>5</sup>



**HP ProDesk 600 G2 Microtower PC Specifications Table**



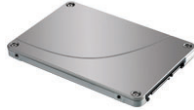
<b>Form Factor</b>	Microtower
<b>Available Operating System</b>	Windows 10 Pro 64 – HP recommends Windows 10 Pro. <sup>1</sup> Windows 10 Home 64 <sup>1</sup> Windows 7 Professional 64 (available through downgrade rights from Windows 10 Pro) <sup>2</sup> Windows 7 Professional 32 (available through downgrade rights from Windows 10 Pro) <sup>2</sup> FreeDOS 2.0
<b>Processor Family<sup>3</sup></b>	Intel® Core™ i7 processor Intel® Core™ i5 processor Intel® Core™ i3 processor Intel® Pentium® Dual-Core processor
<b>Available Processors<sup>3,17</sup></b>	Intel® Core™ i7-6700 with Intel HD Graphics 530 (3.4 GHz, up to 4 GHz with Intel Turbo Boost, 8 MB cache, 4 cores) Intel® Core™ i5-6600 with Intel HD Graphics 530 (3.3 GHz, up to 3.9 GHz with Intel Turbo Boost, 6 MB cache, 4 cores) Intel® Core™ i5-6500 with Intel HD Graphics 530 (3.2 GHz, up to 3.6 GHz with Intel Turbo Boost, 6 MB cache, 4 cores) Intel® Core™ i3-6320 with Intel HD Graphics 530 (3.9 GHz, 4 MB cache, 2 cores) Intel® Core™ i3-6300 with Intel HD Graphics 530 (3.8 GHz, 4 MB cache, 2 cores) Intel® Core™ i3-6100 with Intel HD Graphics 530 (3.7 GHz, 3 MB cache, 2 cores) Intel® Pentium® G4520 with Intel HD Graphics 530 (3.6 GHz, 3 MB cache, 2 cores) Intel® Pentium® G4500 with Intel HD Graphics 530 (3.5 GHz, 3 MB cache, 2 cores) Intel® Pentium® G4400 with Intel HD Graphics 510 (3.3 GHz, 3 MB cache, 2 cores)
<b>Chipset</b>	Intel® Q150
<b>Maximum Memory</b>	64 GB DDR4-2133 SDRAM (Transfer rates up to 2133 MT/s)
<b>Memory Slots</b>	4 DIMM
<b>Internal Storage</b>	500 GB up to 2 TB SATA (7200 rpm) <sup>4</sup> 500 GB (8 GB cache) up to 1 TB (8 GB cache) SATA SSHD <sup>4</sup> 120 GB up to 256 GB SATA SSD <sup>4</sup> 128 GB up to 512 GB SATA 3D SSD <sup>4</sup> 128 GB up to 512 GB HP Turbo Drive G2 SSD (M.2 PCIe) <sup>4</sup> 128 GB up to 120 GB up to 1 TB SATA SED SSD <sup>4</sup>
<b>Optical Drive</b>	Slim SATA BDXL Blu-ray writer; Slim SATA DVD-ROM; Slim SATA DVD-Writer <sup>5,6</sup>
<b>Available Graphics</b>	Integrated: Intel® HD Graphics <sup>8</sup> Discrete: NVIDIA® GeForce® GT 730 (2 GB); NVIDIA® GeForce® GT 720 (2 GB); NVIDIA® NV5® 310 (1 GB); AMD Radeon™ R9 350 (2 GB); AMD Radeon™ R5 320 (1 GB) (Integrated graphics will depend on processor)
<b>Audio</b>	DTS Sound+™ audio management technology, HD audio with Realtek ALC221 codec (all ports are stereo), microphone and headphone front ports (3.5 mm), line-out and line-in rear ports (3.5 mm), multi-streaming capable and internal speaker.
<b>Communications</b>	LAN: Intel® I219LM Gigabit Network Connection LOM; Intel® I210-T1 PCIe GbE (optional) WLAN: Broadcom BCM943228Z 802.11n Wireless PCIe with Bluetooth® (optional); Broadcom BCM943228Z 802.11n Wireless PCIe (optional); Intel® 7265 802.11ac Wireless PCIe with Bluetooth® (optional); Intel® 7265 802.11ac Wireless PCIe (optional); Intel® 7265 802.11n Wireless PCIe (optional) <sup>7</sup>

<b>Expansion Slots</b>	3 full height PCIe 3.0 x1; 1 full height PCIe 3.0 x16
<b>Ports and Connectors</b>	Front: 2 USB 3.0; 2 USB 2.0 (1 fast charging); 1 headphone; 1 microphone/headphone; 1 SD 3 card reader (optional) Back: 6 USB 3.0; 1 serial; 1 serial (optional); 1 parallel (optional); 2 PS/2 (keyboard and mouse); 1 VGA; 2 DisplayPort; 1 audio line in; 1 audio line out; 1 RJ-45
<b>Internal Drive Bays</b>	Two 3.5"
<b>External Drive Bays</b>	One slim ODD; One SD 3 card reader (optional)
<b>Available Software</b>	HP business PCs are shipped with a variety of software titles including: HP Drive Encryption, HP Client Security Manager, HP Security Manager, Microsoft Security Essentials, CyberLink Power2Go, Native Miracast Support, HP ePrint Driver, HP Recovery Manager, Foxit PhantomPDF Express. Please refer to this product's quick spec document for a full list of preinstalled software. <sup>11,12</sup>
<b>Security Management</b>	Trusted Platform Module SLB9670TT1.2FW4.40 (TPM) 1.2 (Common Criteria EAL4+ certified), field upgradeable to 2.0; SATA port disablement (via BIOS); Drive lock; Intel® Identity Protection Technology (IPT); Serial, parallel, USB enable/disable (via BIOS); Optional USB port disable at factory (user configurable via BIOS); Removable media write/boot control; Power-on password (via BIOS); Setup password (via BIOS); HP Chassis (1 bay) Security Kit; Solenoid hood lock; Intrusion sensor; Support for chassis padlock devices; Support for chassis cable lock devices <sup>13,14,18</sup>
<b>Management Features</b>	Intel® Standard Manageability
<b>Power</b>	280 W, up to 92% efficient, active PFC; 280 W, 70% efficiency at full load, active PFC
<b>Dimensions</b>	6.7 x 14.1 x 14 in 170 x 358.3 x 355 mm
<b>Weight</b>	Starting at 16.2 lb Starting at 7.35 kg (Weight varies by configuration)
<b>Environmental</b>	Low halogen <sup>16</sup>
<b>Energy Efficiency Compliance</b>	ENERGY STAR® certified and EPEAT® registered configurations available <sup>15</sup>
<b>Warranty</b>	Protected by HP Services, including a 3-year parts, 3 years labor, and 3 years onsite service (3/3/3) limited warranty; Terms and conditions vary by country; Certain restrictions and exclusions apply.

**HP ProDesk 600 G2 Microtower PC**

Accessories and services (not included)

**HP 500GB Solid State Hybrid Drive (SSHD)**



Get the responsiveness of solid state memory and the capacity of a hard drive in a highly affordable package with the HP 500GB SATA 6G 2.5 (8GB Cache) solid state hybrid drive (SSHD), which delivers fast boot-up, shut down, and application loading.

**Product number: E1C62AA**

**HP EliteDisplay E242 24-inch Monitor Head Only**

Be a master at multi-tasking with HP EliteDisplay E242 24-inch Monitor Head Only, which delivers Full HD resolution and an extra-large screen for all of your work.

**Product number: N0Q25AA**

**HP 3D 256GB SATA Solid State Drive**



Expand the storage capabilities of your desktop with the HP 3D 256 GB SATA SSD<sup>1</sup>, which includes 3D V-NAND flash for impressive read/write performance and reliability plus the same solid performance you already get from current SATA SSD drives.

**Product number: N1M49AA**

**NVIDIA GeForce GT730 GFX (2GB) PCIe x8 Graphics Card**



Get impressive graphics and high resolution quad-display performance from the NVIDIA® GeForce® GT 730 Graphics Card.

**Product number: N3R90AA**

**HP USB Conference Keyboard**



Drive your Microsoft Lync voice and video calls directly from your HP USB Conference Keyboard and connect, disconnect, and manage your calls and videoconferencing settings with simple dedicated keys<sup>1</sup>.

**Product number: N8N57AA**

**HP 3 Year Recover & Restore Service**



HP Recover & Restore Service includes recovery of data in the event of data loss due to mechanical failure, accidental deletion, software crash, or malware; onsite operating system restoration and easy access to HP-certified remote diagnosis and troubleshooting. Get help with installation, setup, sync, and troubleshooting for computer operating systems and common software applications.

**Product number: U9AN7E**

## Messaging Footnotes

- <sup>1</sup> Not all features are available in all editions or versions of Windows. Systems may require upgraded and/or separately purchased hardware, drivers, software or BIOS update to take full advantage of Windows functionality. Windows 10 is automatically updated, which is always enabled. ISP fees may apply and additional requirements may apply over time for updates. See <http://www.microsoft.com>.
- <sup>2</sup> Multi-Core is designed to improve performance of certain software products. Not all customers or software applications will necessarily benefit from use of this technology. Performance and clock frequency will vary depending on application workload and your hardware and software configurations. Intel's numbering is not a measurement of higher performance.
- <sup>3</sup> HP BIOSphere features may vary depending on the PC platform & configuration.
- <sup>4</sup> Windows 10 Enterprise and Device Guard are only available for installation through HP Custom Integration Services to enterprise customers with a volume license to use Windows 10 Enterprise and requires TPM 2.0. Device Guard is not available with Windows 10 Pro.
- <sup>5</sup> Sold separately or as an optional feature.
- <sup>6</sup> Multi-core is designed to improve performance of certain software products. Not all customers or software applications will necessarily benefit from use of this technology. Performance and clock frequency will vary depending on application workload and your hardware and software configurations. Intel's numbering, branding and/or naming is not a measurement of higher performance.
- <sup>7</sup> "Observed Productivity, Efficiency and User Satisfaction when Using Multiple or Large Displays," Koala LLC Ergonomics Consulting, November 6, 2012.

## Technical Specifications Footnotes

- <sup>1</sup> Not all features are available in all editions or versions of Windows. Systems may require upgraded and/or separately purchased hardware, drivers, software or BIOS update to take full advantage of Windows functionality. Windows 10 is automatically updated, which is always enabled. ISP fees may apply and additional requirements may apply over time for updates. See <http://www.microsoft.com>.
- <sup>2</sup> This system is preinstalled with Windows 7 Professional software and also comes with a license and media for Windows 10 Pro software. You may only use one version of the Windows software at a time. Switching between versions will require you to uninstall one version and install the other version. You must back up all data (files, photos, etc.) before uninstalling and installing operating systems to avoid loss of your data.
- <sup>3</sup> Multi-Core is designed to improve performance of certain software products. Not all customers or software applications will necessarily benefit from use of this technology. Performance and clock frequency will vary depending on application workload and your hardware and software configurations. Intel's numbering is not a measurement of higher performance.
- <sup>4</sup> For storage drives, GB = 1 billion bytes. TB = 1 trillion bytes. Actual formatted capacity is less. Up to 36 GB (for Windows 10) of system disk is reserved for system recovery software.
- <sup>5</sup> Duplication of copyrighted material is strictly prohibited. Actual speeds may vary. Double Layer media compatibility will widely vary with some home DVD players and DVD-ROM drives. Note that DVD-RAM cannot read or write to 2.6GB Single Sided/5.2 Double Sided-Version 1.0 Media.
- <sup>6</sup> With Blu-Ray drive XL, certain disc, digital connection, compatibility and performance issues may arise, and do not constitute defects in the product. Flawless playback on all systems is not guaranteed. In order for some Blu-ray titles to play, they may require an HDCP path and HDCP display. HD-DVD movies cannot be played on this BDXL Drive.
- <sup>7</sup> Wireless cards are optional or add-on features and requires separately purchased wireless access point and internet service. Availability of public wireless access points limited. The specifications for the 802.11ac WLAN are draft specifications and are not final. If the final specifications differ from the draft specifications, it may affect the ability of this desktop PC to communicate with other 802.11ac WLAN devices.
- <sup>8</sup> HD content required to view HD images.
- <sup>9</sup> Optional or add-on feature.
- <sup>11</sup> Microsoft Security Essentials requires Windows 7 and internet access.
- <sup>12</sup> Miracast is a wireless technology your PC can use to project your screen to TVs, projectors, and streaming media players that also support Miracast. You can use Miracast to share what you're doing on your PC and present a slide show. Miracast is available for Windows 8 and Windows 10. For more information: <http://windows.microsoft.com/en-us/windows-8/project-wireless-screen-miracast>.
- <sup>13</sup> Models configured with Intel® Core™ processors have the ability to utilize advanced security protection for online transactions. IPT, used in conjunction with participating web sites, provides double identity authentication by adding a hardware component in addition to the usual user name and password. IPT is initialized through an HP Client Security module.
- <sup>14</sup> This product ships with TPM 1.2 with option to upgrade to TPM 2.0. Upgrade utility is expected to be available by the end of 2015 via HP Customer Support.
- <sup>15</sup> EPEAT® registered where applicable. EPEAT registration varies by country. See [www.epeat.net](http://www.epeat.net) for registration status by country. See HP's 3rd party option store for solar energy accessory [www.hp.com/go/options](http://www.hp.com/go/options).
- <sup>16</sup> External power supplies, power cords, cables and peripherals are not low halogen. Service parts obtained after purchase may not be low halogen.
- <sup>17</sup> Intel® Core™ i3 and Pentium processors planned to be available in November 2015.
- <sup>18</sup> HP Drive Lock is not supported on NVMe drives.

**Sign up for updates**  
[hp.com/go/getupdated](http://hp.com/go/getupdated)

**Learn more at**  
[hp.com](http://hp.com)

© Copyright 2018 HP Development Company, L.P. The information contained herein is subject to change without notice. The only warranties for HP products and services are set forth in the express warranty statements accompanying such products and services. Nothing herein should be construed as constituting an additional warranty. HP shall not be liable for technical or editorial errors or omissions contained herein.

ENERGY STAR and the ENERGY STAR mark are registered trademarks owned by the U.S. Environmental Protection Agency. Bluetooth is a trademark of its proprietor used by Hewlett-Packard Company under license. Intel and Core are trademarks of Intel Corporation in the U.S. and other countries. Linux® is the registered trademark of Linus Torvalds in the U.S. and other countries. For DTS patents, see <http://patents.dts.com>. Manufactured under license from DTS Licensing Limited. DTS, the Symbol, & DTS and the Symbol together are registered trademarks, and DTS Sound+ is a trademark of DTS, Inc. © DTS, Inc. All Rights Reserved. All other trademarks are the property of their respective owners.

