

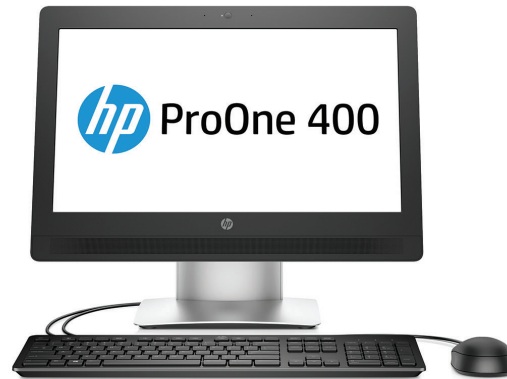


HP ProOne 400 G2 20-inch Non-Touch All-in-One PC

Easy to deploy, sleek, and feature-rich, the HP ProOne 400 20" All-in-One PC with business-class collaboration, manageability, and security features is a sound investment.

HP recommends Windows 10 Pro.

- Windows 10 Pro¹
- Screen Size: 20" diagonal



Sleek, elegant design

Stylish design featuring extensive cable management and clean lines makes this AiO suitable for a front desk or an open office. 20" diagonal IPS display³ for space-constrained work environments.

Power like a tower

New 6th Generation Intel® Core™ 65W processors² bring high end processing power to the AiO that evokes tower-like performance.

Executive-class collaboration

Interact naturally with Cortana⁴ on Windows 10.¹ Enjoy impressive collaboration tools like Skype for Business, HP Noise Reduction Software, and a 1 MP HD webcam.

Security from the start

Stay up and running with business-class security solutions, including TPM, HP BIOSphere⁵ and HP Client Security.⁶ Optional security locks, privacy screens, and encrypted drives³ also help keep data and your investment safe.

Featuring

- Easy access to critical parts, rigorous testing, and HP temperature control technology helps ensure your AiO withstands tough work environments.
- Reduce the complexity of administration. HP Touchpoint Manager,⁷ Windows 10¹ manageability features, and HP Common Core BIOS help you easily manage assets.
- Pair this space-saving AiO with the stand option³ to fit your workspace and use case.
- Help suppress ambient noise including keyboard clicks with HP Noise Reduction Software.
- DTS Studio Sound™ lets you make the most of virtual conferencing.
- Make conferencing from your PC as simple as the touch of a button with the optional HP Conferencing Keyboard.³
- HP BIOSphere⁵ and HP Client Security⁶ help keep critical data and systems protected with customizable security.



Management Features	Intel Standard Manageability (select models); Update BIOS via Cloud or Network (BIOS feature); HP TouchPoint Manager
Power	120 W, up to 89% efficient, active PFC (external)
Dimensions	19.55 x 13.68 x 2.31 in (Without stand) 496.71 x 347.5 x 58.7 mm (Without stand)
Weight	Starting at 12.01 lb (Starting weight without stand. Exact weight depends on configuration.) Starting at 5.45 kg (Starting weight without stand. Exact weight depends on configuration.)
Environmental	Low halogen ¹⁴
Energy Efficiency Compliance	ENERGY STAR [®] certified and EPEAT [®] registered configurations available ¹³

HP ProOne 400 G2 20-inch Non-Touch All-in-One PC

Accessories and services (not included)

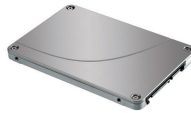
HP Single Monitor Arm



The HP Single Monitor Arm is the perfect desk accessory for your work life. Sleek and streamlined, the HP Single Monitor Arm is designed to complement the way you work.

Product number: BT861AA

HP 500GB Solid State Hybrid Drive (SSHD)



Get the responsiveness of solid state memory and the capacity of a hard drive in a highly affordable package with the HP 500GB SATA 6G 2.5 (8GB Cache) solid state hybrid drive (SSHD), which delivers fast boot-up, shut down, and application loading.

Product number: E1C62AA

HP 3D 256GB SATA Solid State Drive



Expand the storage capabilities of your desktop with the HP 3D 256 GB SATA SSD¹, which includes 3D V NAND flash for impressive read/write performance and reliability plus the same solid performance you already get from current from SSD drives.

Product number: N1M49AA

HP USB Conference Keyboard



Drive your Microsoft Lync voice and video calls directly from your HP USB Conference Keyboard and connect, disconnect, and manage your calls and videoconferencing settings with simple dedicated keys¹.

Product number: N8N57AA

HP 8GB SODIMM DDR4 Memory



Boost the capabilities of your HP Business Desktop PC and improve system performance and application responsiveness with low-power, high-speed DDR4 memory from HP.

Product number: P1N54AA

HP 3 Year Recover & Restore Service



HP Recover & Restore Service includes recovery of data in the event of data loss due to mechanical failure, accidental deletion, software crash, or malware; onsite operating system restoration and easy access to HP-certified remote diagnosis and troubleshooting. Get help with installation, setup, sync, and troubleshooting for computer operating systems and common software applications.

Product number: U9AN7E

Messaging Footnotes

¹ Not all features are available in all editions or versions of Windows. Systems may require upgraded and/or separately purchased hardware, drivers and/or software to take full advantage of Windows functionality. Windows 10 is automatically updated, which is always enabled. ISP fees may apply and additional requirements may apply over time for updates. See <http://www.microsoft.com>.

² Multi-Core is designed to improve performance of certain software products. Not all customers or software applications will necessarily benefit from use of this technology. Performance and clock frequency will vary depending on application workload and your hardware and software configurations. Intel's numbering is not a measurement of higher performance.

³ Sold separately or as an optional feature.

⁴ Cortana experience may vary by device, region. Some features including voice supported Cortana, inking, and Continuum require more advanced hardware. See www.hp.com/go/windows10upgrade. Apps sold separately.

⁵ HP BIOSphere features may vary depending on the PC platform & configuration.

⁶ Requires Windows.

⁷ HP Touchpoint Manager requires purchase of a subscription and supports Android™, iOS and Windows 7 or higher operating systems and PCs, notebooks, tablets and smartphones from various manufacturers. Not available in all countries see www.hp.com/touchpoint for availability information..

Technical Specifications Footnotes

¹ Not all features are available in all editions or versions of Windows. Systems may require upgraded and/or separately purchased hardware, drivers, software or BIOS update to take full advantage of Windows functionality. Windows 10 is automatically updated, which is always enabled. ISP fees may apply and additional requirements may apply over time for updates. See <http://www.microsoft.com>.

² This system is preinstalled with Windows 7 Professional software and also comes with a license and media for Windows 10 Pro software. You may only use one version of the Windows software at a time. Switching between versions will require you to uninstall one version and install the other version. You must back up all data (files, photos, etc.) before uninstalling and installing operating systems to avoid loss of your data.

³ Multi-Core is designed to improve performance of certain software products. Not all customers or software applications will necessarily benefit from use of this technology. Performance and clock frequency will vary depending on application workload and your hardware and software configurations. Intel's numbering is not a measurement of higher performance.

⁴ For storage drives, GB = 1 billion bytes. TB = 1 trillion bytes. Actual formatted capacity is less. Up to 16 GB (for Windows 7) and up to 36 GB (for Windows 8.1 and 10) of system disk is reserved for system recovery software.

⁵ Duplication of copyrighted material is strictly prohibited. Actual speeds may vary. Double Layer media compatibility will widely vary with some home DVD players and DVD-ROM drives. Note that DVD-RAM cannot read or write to 2.6GB Single Sided/5.2 Double Sided-Version 1.0 Media.

⁶ Wireless cards are optional or add-on features and requires separately purchased wireless access point and internet service. Availability of public wireless access points limited. The specifications for the 802.11ac WLAN are draft specifications and are not final. If the final specifications differ from the draft specifications, it may affect the ability of this desktop PC to communicate with other 802.11ac WLAN devices.

⁷ HD content required to view HD images.

⁸ Optional or add-on feature.

⁹ HP ePrint requires an Internet connection to HP web-enabled printer and HP ePrint account registration (for a list of eligible printers, supported documents and image types and other HP ePrint details, see www.hp.com/go/businessmobileprinting). HP PageLift requires Windows 7 or higher.

¹⁰ Microsoft Security Essentials requires Windows 7 and internet access.

¹¹ HP Drive Encryption requires Windows. Data is protected prior to Drive Encryption login. Turning the PC off or into hibernate logs out of Drive Encryption and prevents data access.

¹² This product ships with TPM 1.2 with option to upgrade to TPM 2.0. Upgrade utility is expected to be available by the end of 2015 via HP Customer Support.

¹³ EPEAT® registered where applicable. EPEAT registration varies by country. See www.epeat.net for registration status by country.

¹⁴ External power supplies, power cords, cables and peripherals are not low halogen. Service parts obtained after purchase may not be low halogen.

Sign up for updates
hp.com/go/getupdated

Learn more at
hp.com

© Copyright 2015. HP Development Company, L.P. The information contained herein is subject to change without notice. The only warranties for HP products and services are set forth in the express warranty statements accompanying such products and services. Nothing herein should be construed as constituting an additional warranty. HP shall not be liable for technical or editorial errors or omissions contained herein.

ENERGY STAR and the ENERGY STAR mark are registered trademarks owned by the U.S. Environmental Protection Agency. Bluetooth is a trademark of its proprietor used by Hewlett-Packard Company under license. Intel and Core are trademarks of Intel Corporation in the U.S. and other countries. For DTS patents, see <http://patents.dts.com>. Manufactured under license from DTS Licensing Limited. DTS, the Symbol, & DTS and the Symbol together are registered trademarks, and DTS Studio Sound is a trademark of DTS, Inc. © DTS, Inc. All Rights Reserved. All other trademarks are the property of their respective owners.

