

# HP EliteBook Folio G1 Notebook PC



Exquisite craftsmanship and exceptional performance are united in the HP EliteBook Folio. With hand-selected materials and premium features optimized for collaboration, it's the choice for those who value a flawless experience.

HP recommends Windows 10 Pro.



- Windows 10 Pro<sup>1</sup>
- Screen Size: 12.5" diagonal

## Elevating durable design

- Cutting-edge design, innovative engineering, and refined materials come together in the sophisticated and durable HP EliteBook Folio. Confidently take on the workday with this elegant PC that passed MIL-STD 810G testing.<sup>2</sup>

## Premium collaboration

- Engage teams, clients, and vendors with the crystal-clear audio by Bang & Olufsen and the high-performance HP Premium Collaboration Keyboard that allows you to launch calls and video chats at the touch of a button on the HP EliteBook Folio.

## Leave passwords behind

- Use the IR camera with Windows Hello to use your face as your password to unlock a Windows 10 Pro<sup>1</sup> device or browse the web.

## Featuring

- Power through your day with Windows 10 Pro<sup>1</sup> and the powerful, collaboration ready HP EliteBook Folio.
- The HP EliteBook Folio handles high-performance requirements with a 6th Gen Intel® Core™ processor,<sup>4</sup> PCIe SSDs, 8 GB of memory, and long battery life.
- Make conferencing from your PC as simple as the touch of a button with the backlit HP Premium Collaboration Keyboard.
- Pick the right display for the way you work with crystal-clear UHD<sup>5</sup> or FHD touch display options.<sup>5</sup>
- Protect, detect, and recover from malicious BIOS attacks with HP Sure Start with Dynamic Protection - the industry's first self-healing BIOS that monitors and corrects BIOS corruption in real-time.<sup>3</sup>
- Help boost efficiency with optional accessories like the HP Elite Thunderbolt™ 3 Dock,<sup>5</sup> the HP Executive Travel Dock,<sup>5</sup> and Elite Displays<sup>5</sup> that complement the sophisticated style of the HP EliteBook Folio.
- Stay productive with essential USB-C™ ports for charging mobile devices and more.
- The HP EliteBook Folio is precision engineered to the finest detail and passed MIL-STD 810G testing.<sup>2</sup>
- Manage data, security, and devices from a single cloud-based solution with HP Touchpoint Manager.<sup>6</sup>

## HP EliteBook Folio G1 Notebook PC Specifications Table



<b>Available Operating System</b>	Windows 10 Pro 64 – HP recommends Windows 10 Pro. <sup>1</sup> Windows 10 Home 64 <sup>1</sup>
<b>Processor Family <sup>2</sup></b>	6th Generation Intel® Core™ m7 processor; 6th Generation Intel® Core™ m5 processor; 6th Generation Intel® Core™ m3 processor
<b>Processor Technology</b>	Intel® vPro™ Technology (select models)
<b>Available Processors <sup>2,3</sup></b>	Intel® Core™ m7-6Y75 with Intel HD Graphics 515 (1.2 GHz, up to 3.1 GHz with Intel Turbo Boost Technology, 4 MB cache, 2 cores); Intel® Core™ m5-6Y57 with Intel HD Graphics 515 (1.1 GHz, up to 2.8 GHz with Intel Turbo Boost Technology, 4 MB cache, 2 cores); Intel® Core™ m5-6Y54 with Intel HD Graphics 515 (1.1 GHz, up to 2.7 GHz with Intel Turbo Boost Technology, 4 MB cache, 2 cores); Intel® Core™ m3-6Y30 with Intel HD Graphics 515 (900 MHz, up to 2.2 GHz with Intel Turbo Boost Technology, 4 MB cache, 2 cores)
<b>Chipset</b>	Chipset is integrated with processor
<b>Maximum Memory</b>	8 GB LPDDR3-1866 SDRAM Transfer rates up to 1866 MT/s. Internal component upgrades to memory are not available after factory configuration.
<b>Internal Storage</b>	128 GB up to 512 GB M.2 SATA TLC SSD <sup>4</sup> 240 GB up to 256 GB M.2 SATA MLC SSD <sup>4</sup> up to 256 GB M.2 PCIe SSD <sup>4</sup> up to 256 GB M.2 SATA SED MLC SSD <sup>4</sup>
<b>Display</b>	12.5" diagonal FHD UWVA anti-glare ultra slim LED-backlit (1920 x 1080); 12.5" diagonal FHD UWVA anti-glare ultra slim LED-backlit (1920 x 1080) Light weight; 12.5" diagonal FHD UWVA ultra slim LED-backlit touch screen (1920 x 1080); 12.5" diagonal UHD UWVA ultra-slim LED-backlit touch screen (3840 x 2160) <sup>6</sup>
<b>Available Graphics</b>	Integrated: Intel® HD Graphics 515
<b>Audio</b>	Audio by Bang & Olufsen; Integrated dual-microphone array; 4 integrated stereo speakers
<b>Wireless Technologies</b>	Intel 802.11a/b/g/n/ac (2x2) and Bluetooth® 4.2 Combo <sup>5</sup> (Internal component upgrades to connectivity are not available after factory configuration.)
<b>Communications</b>	Ethernet via accessory dongle (optional)
<b>Ports and Connectors</b>	2 USB Type-C™ with Thunderbolt™ support (docking, charging and USB 3.1); 1 headphone/microphone combo
<b>Input Device</b>	Full size, backlit, HP Premium Collaboration Keyboard Glass ClickPad (with chemically etched surface), taps and gestures enabled by default, two-finger scrolling, two finger zoom (pinch)
<b>Camera</b>	720p HD webcam, IR camera for face authentication with Windows Hello <sup>6</sup>
<b>Available Software</b>	Buy Office; HP BIOSphere; HP Sure Start with Dynamic Protection; HP Connection Manager (models with Windows 7); HP Wireless Hotspot; HP Mobile Connect (EMEA only); HP PageLift; HP Recovery Manager; HP Support Assistant; HP ePrint; HP SoftPaq Download Manager; CyberLink Power DVD; CyberLink YouCam BE; HP Touchpoint Manager; Foxit PhantomPDF Express for HP; HP Connection Manager; Intel® WIDI Software; Microsoft Security Essentials (models with Windows 7 only); Skype for Business certified; For a complete list of preinstalled software, please refer to the quick spec document for this product. <sup>7,8,9,10,11,12,13,14,15</sup>
<b>Security Management</b>	IR Camera for face authentication; TPM 2.0 (Infineon, soldered down); Preboot Authentication (Password) <sup>16</sup>
<b>Power</b>	45 W Smart USB Type-C™ AC adapter
<b>Battery Type</b>	HP Long Life 4-cell, 38 WHr Li-ion polymer
<b>Battery Life</b>	4-cell long life: up to 10 hours and 30 minutes (with FHD and non-touch), up to 7 hours (with UHD) <sup>18</sup>
<b>Dimensions</b>	29.2 x 20.9 x 1.19 cm (non-touch); 29.2 x 20.9 x 1.24 cm (touch)
<b>Weight</b>	Starting at 0.97 kg (non-touch and non-glass); Starting at 1.07 kg (touch) (Weight will vary by configuration.)
<b>Environmental</b>	Low halogen <sup>17</sup>
<b>Energy Efficiency Compliance</b>	ENERGY STAR® certified configurations available; EPEAT® Gold registered. EPEAT® registered where applicable. EPEAT registration varies by country. See www.epeat.net for registration status by country.
<b>Expansion Solutions</b>	HP Elite Thunderbolt 3 Dock (optional); HP Executive Travel Hub (optional)
<b>Warranty</b>	HP Services offers 3-year, 1-year and 90-day limited warranty options depending on country. Batteries have a default one year limited warranty except for Long Life batteries which will have same 1-year or 3-year limited warranty as the platform. On-site service and extended coverage is also available. HP Care Pack Services are optional extended service contracts that go beyond the standard limited warranties. To choose the right level of service for your HP product, use the HP Care Pack Services

## HP EliteBook Folio G1 Notebook PC

### Recommended Accessories and Services

---

#### HP Slim 14-inch Sleeve

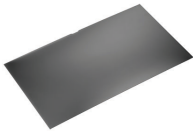


Pack your Ultrabook™ to go with an HP Ultrabook Sleeve, a stylish, durable, and compact sleeve case designed to help protect your notebook and maintain its sleek profile.

**Product number: F7Z99AA**

---

#### HP 12.5-in Privacy Filter



Help protect your notebook data from prying eyes with a privacy filter.

**Product number: J6E64AA**

---

#### HP Elite Thunderbolt 3 65W Dock



Create a remarkably powerful and streamlined workspace without the clutter with the HP Elite Thunderbolt 3<sup>1</sup> 65W Dock. Get expansive device, display, and network connectivity plus simultaneous charging of your system through one simple cable from the dock to your HP EliteBook.

**Product number: P5Q54AA**

---

#### HP 3-year Travel Next Business Day Onsite Notebook Only Service



Provides Next Business Day Onsite service for Notebook user in major geographies of the world for 3 years. For more information on Care Pack services, please visit [www.hp.com/go/cpc](http://www.hp.com/go/cpc)

**Product number: UC909E**

---

## Messaging Footnotes

- <sup>1</sup> Not all features are available in all editions or versions of Windows. Systems may require upgraded and/or separately purchased hardware, drivers, software or BIOS update to take full advantage of Windows functionality. Windows 10 is automatically updated, which is always enabled. ISP fees may apply and additional requirements may apply over time for updates. See <http://www.microsoft.com>.
- <sup>2</sup> MIL-STD testing is not intended to demonstrate fitness for U.S. Department of Defense contract requirements or for military use. Test results are not a guarantee of future performance under these test conditions. Damage under the MIL STD test conditions or any accidental damage requires an optional HP Accidental Damage Protection Care Pack.
- <sup>3</sup> Dynamic Protection monitors and corrects BIOS every 15 minutes.
- <sup>4</sup> Multi-Core is designed to improve performance of certain software products. Not all customers or software applications will necessarily benefit from use of this technology. Performance and clock frequency will vary depending on application workload and your hardware and software configurations. Intel's numbering is not a measurement of higher performance.
- <sup>5</sup> Sold separately or as an optional feature.
- <sup>6</sup> HP Touchpoint Manager requires purchase of a subscription and supports Android™, iOS and Windows 7 or higher operating systems and PCs, notebooks, tablets and smartphones from various manufacturers. Not available in all countries see [www.hp.com/touchpoint](http://www.hp.com/touchpoint) for availability information.

## Technical Specifications Footnotes

- <sup>1</sup> Not all features are available in all editions or versions of Windows. Systems may require upgraded and/or separately purchased hardware, drivers, software or BIOS update to take full advantage of Windows functionality. Windows 10 is automatically updated, which is always enabled. ISP fees may apply and additional requirements may apply over time for updates. See <http://www.microsoft.com>.
- <sup>2</sup> Multicore is designed to improve performance of certain software products. Not all customers or software applications will necessarily benefit from use of this technology. Performance and clock frequency will vary depending on application workload and your hardware and software configurations. Intel's numbering is not a measurement of higher performance.
- <sup>3</sup> Some vPro functionality of this technology, such as Intel® Active management technology and Intel Virtualization technology, requires additional 3rd party software in order to run. Availability of future "virtual appliances" applications for Intel vPro technology is dependent on 3rd party software providers. Microsoft Windows required.
- <sup>4</sup> For storage drives, GB = 1 billion bytes. Actual formatted capacity is less. Up to 30 GB (for Windows 7 and 10) is reserved for system recovery software.
- <sup>5</sup> Wireless requires wireless access point and Internet service. Availability of public wireless access points limited.
- <sup>6</sup> HD content required to view HD images.
- <sup>7</sup> BIOSphere features may vary.
- <sup>8</sup> The Wireless Hotspot application requires an active internet connection and separately purchased data plan. While HP Wireless Hotspot is active, on-device applications will continue to work and will use the same data plan as the wireless hotspot. Wireless Hotspot data usage may incur additional charges. Check with your plan details. Requires Windows.
- <sup>9</sup> HP Mobile Connect is available in select EMEA countries and requires prepaid service purchase. Find coverage and availability for your service area at [www.hp.com/go/mobileconnect](http://www.hp.com/go/mobileconnect).
- <sup>10</sup> HP Support Assistant requires Windows.
- <sup>11</sup> ePrint requires an Internet connection to HP web-enabled printer. HP ePrint account registration required. For a list of eligible printers, supported documents and image types, and for complete details, see [www.hp.com/go/businessmobileprinting](http://www.hp.com/go/businessmobileprinting).
- <sup>12</sup> Absolute subscription required, see <http://www.absolute.com/landing/2012/computrace-hp> for complete details. Absolute Data Protect agent is shipped turned off, and must be activated by customers. Service may be limited, check with Absolute for availability outside the U.S. The optional subscription service of Absolute Recovery Guarantee is a limited warranty. Certain conditions apply. For full details visit: <http://www.absolute.com/company/legal/agreements/computrace-agreement>. If Data Delete is utilized, the Recovery Guarantee payment is null and void. In order to use the Data Delete service, customers must first sign a Pre-Authorization Agreement and either create a PIN or purchase one or more RSA SecurID tokens from Absolute Software.
- <sup>13</sup> File Sanitizer: For the use cases outlined in the DOD 5220.22-M Supplement. Does not support Solid State Drives (SSDs). Initial setup required. Web history deleted only in Internet Explorer and Firefox browsers and must be user enabled. With Windows 8.1, user must turn off Enhanced Protection Mode in IE11 for shred on browser close feature.
- <sup>14</sup> Integrated Intel WiDi software is available and requires separately purchased projector, TV or computer monitor with an integrated or external WiDi receiver. External WiDi receivers connect to the projector, TV or computer monitor via a standard VGA, HDMI cable, also sold separately.
- <sup>15</sup> Skype for Business subscription required.
- <sup>16</sup> This product ships with TPM 1.2 with option to upgrade to TPM 2.0. Upgrade utility is expected to be available by the end of 2015 via HP Customer Support.
- <sup>17</sup> External power supplies, power cords, cables and peripherals are not low halogen. Service parts obtained after purchase may not be low halogen.
- <sup>18</sup> Windows 10 MM14 battery life will vary depending on various factors including product model, configuration, loaded applications, features, use, wireless functionality, and power management settings. The maximum capacity of the battery will naturally decrease with time and usage. See [www.bapco.com](http://www.bapco.com) for additional details.

## Sign up for updates

[hp.com/go/getupdated](http://hp.com/go/getupdated)

© Copyright 2016 HP Development Company, L.P. The information contained herein is subject to change without notice. The only warranties for HP products and services are set forth in the express warranty statements accompanying such products and services. Nothing herein should be construed as constituting an additional warranty. HP shall not be liable for technical or editorial errors or omissions contained herein.

Bluetooth is a trademark of its proprietor and used by HP Inc. under license. Intel, Core and vPro are trademarks of Intel Corporation in the U.S. and other countries. USB Type-C™ and USB-C™ are trademarks of USB Implementers Forum. ENERGY STAR is a registered trademark of the U.S. Environmental Protection Agency. All other trademarks are the property of their respective owners.

