

Brief

HP and PrinterLogic



PrinterLogic delivers an integrated platform to help simplify printer management

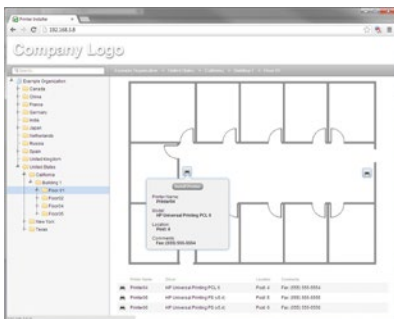
HP Managed Print Services includes print management solutions – like PrinterLogic – to better manage your internal printing processes while contributing to lower printing costs.



PrinterLogic can provide:

- Added secure printing processes
- Self-service printer installation
- Mobile, BYOD & guest printing
- Print job auditing and SNMP monitoring
- Simplified remote session printing

End-User Self-Service Portal



PrinterLogic can increase printer environment functionality

PrinterLogic is an on-premise web-based application helping to eliminate the need for a print server, providing IT a single administrator portal to centrally manage printing in their enterprise, and enabling employees to easily install their own printers. Printing from any mobile, BYOD or networked device, as an employee, partner or guest, becomes easier with PrinterLogic.

Central management

- Effortlessly import and migrate all printers into PrinterLogic's administrator portal
- Centrally manage end-user printers, drivers, device settings and preferences
- Automatically apply all changes made by the administrator to end-user printers
- Effectively helps to eliminate complicated scripting and group policy objects (GPO's) by pushing printers according to active directory (AD) user, group, organizational units (OU) or internet protocol (IP) address range

Pull Printing

- Help ensure print jobs are not released until the user is at the printer
- Release print jobs to any network printer configured with pull printing
- Utilize Proximity Card Readers or mobile device to release print jobs

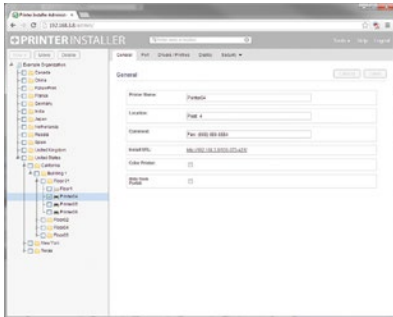
Self-service printer installation portal

- Empower users to self-install printers with a single click
- Provide optional floor plan maps to help locate and install printers
- Significantly reduce the number of help desk calls

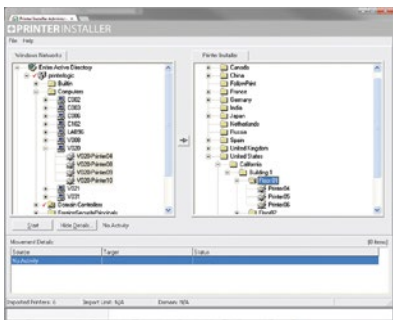
Simplified remote session and virtual desktop infrastructure (VDI) printing

- Auto-deploy printers in sessions based on IP address of endpoint device
- Instantly create printers in the sessions and speed up login times
- Compress print jobs before they are sent across wide area network (WAN) connections

Printer Installer Administrator



Import Utility



Mobile, BYOD & Guest Printing

- Print natively from Android or iOS, with special consideration for Chromebook
- On- or off-network direct email to print functionality
- No additional software to install

Print Job Auditing and SNMP Monitoring

- Generate reports to proactively control costs and manage resources
- Track and audit print jobs by user, department, job title or printer
- Monitor physical printer status through simple network management protocol (SNMP)

HP and PrinterLogic

HP and PrinterLogic help organizations create, implement and manage organizational print strategies with ease.

Technical Specifications

Before installing the PrinterLogic web application, make sure your system meets the following minimum hardware and software requirements.

Web Server

- **Software:**
 - Windows Server 2008 R2 or newer (physical or virtual)
 - IIS, MySQL & PHP are automatically installed during setup.
- **Minimum Hardware:**
 - (2) 2.0 GHz processors or (1) 2.0 GHz processor with dual core for up to 15,000 users. Add an additional core for every 15,000 end users thereafter.
 - 4GB RAM for up to 15,000 users. Add an additional 2GB RAM for every 15,000 end users thereafter.
 - 2 GB of free hard disk space for every 100 printers.

• Network:

- TCP port 80 for client communication, or 443 if using HTTPS.
- TCP port 9100 for direct printing to printers.
- TCP ports 161 and 162 for SNMP communication with print devices.
- TCP port 7627 for HP console-based print job release.
- TCP ports 443, 5222, and 5269 for Google Cloud Print integration.

Client Workstations

- **Operating System:** Windows 7, Windows 7 x64, Windows 7 Embedded, Windows 8, Windows 10, Server 2008, Server 2008 x64, Server 2008 R2, Server 2012, Server 2012 R2, Mac OS X 10.7, 10.8, 10.9, 10.10, 10.11
- **Browser:** IE 8+, Latest Chrome, Latest Firefox, Safari 5.1+. A browser is not required if printer self-service installation is not desired. For example, if you are deploying printers by group membership, the client workstation would not need a browser.
- **Hardware:** Hardware capable of running the OS with 20 MB free hard disk space for the PrinterLogic Client installation.

Other

- **Importing Windows Printers:** The ability to import printers from Windows print servers requires Administrator rights to the print server and the ability to connect to administrative shares (Admin\$) on the print server. Network ports that must be open between the print server and the importing computer include: TCP ports 80, 139, 445; UDP ports 137, 138.
- **Importing Novell Printers:** The ability to import printers from Novell print servers requires Administrator rights to the Novell tree. Network ports that must be open between the print server and the importing computer include: TCP ports 80, 3396, 3014.

Sign up for updates
hp.com/go/getupdated



Share with colleagues



Rate this document

