

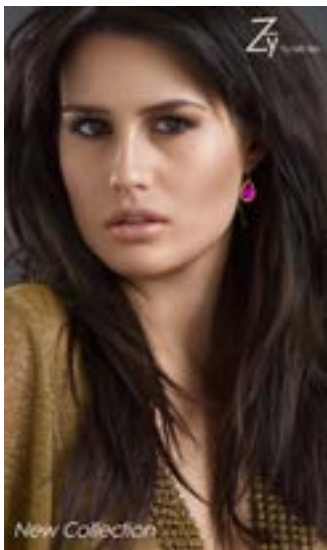
# HP Indigo 20000 Digital Press



Productivity and flexibility for B1 commercial applications



## Breakthrough digital web platform for indoor posters, canvas and more



The HP Indigo 20000 Digital Press is a 30 inch wide, roll-to-roll solution capable of producing diverse commercial applications including point of purchase, art canvas, B1 format indoor posters and signage, and any other simplex applications in HP Indigo's renowned offset-matching quality.

### Achieve high productivity and cost efficiency

The speed and imposition efficiency achieved by the 29 x 43 inch image format web press make it a highly cost-effective solution. Print 20, 128 sq. ft. in color per hour. A powerful print server and variable data capabilities open new opportunities for unlimited one-of-a-kind prints with high productivity.

### The leader in print quality and color

Enabled by HP Indigo's liquid ElectroInk technology and unique digital offset process, HP Indigo digital prints are the highest quality. They match or exceed offset, allowing them to be used interchangeably. HP Indigo ElectroInk has the widest digital color gamut, including special effect inks, using up to 7 ink stations. Emulate PANTONE® colors on press using CMYK or HP IndiChrome's 6- or 7-color process. True spot colors can be ordered from the HP IndiChrome Ink Mixing Service, covering up to 97% of the PANTONE® color range.

### Wide media gamut

The press prints on paper, synthetics and canvas from 0.4 to 10 pt. Inline priming enables printing on off-the-shelf materials including offset stock without any preliminary processes for unlimited media availability.

### The choice of brands

Brands use HP Indigo presses to deploy mass customization and personalization for powerful campaigns that boost sales.

### Powerful print server

HP SmartStream Production Pro Print Server 6 is the industry's most scalable and powerful print server. It can handle the most challenging workloads and offers a wealth of easily automated prepress tools to optimize production. HP SmartStream Mosaic variable design technology generates unlimited one-of-a-kind designs.

## CO<sub>2</sub> neutral

### Boost your sustainability

The HP Indigo 20000 Digital Press is manufactured carbon neutral. It also offers reduced production waste, energy efficiency, and a supplies take-back program.

To learn more, visit [hp.com/go/graphic-arts](http://hp.com/go/graphic-arts) or [hp.com/hpindigo20000forcommercial](http://hp.com/hpindigo20000forcommercial)

## Technical specifications

<b>Printing speed</b>	101 ft/min in 4-color mode; 135 ft/min in EPM; 82 ft/min in 5-color mode
<b>Image resolution</b>	812 dpi at 8 bit, addressability: 2438 x 2438 dpi HDI (High Definition Imaging)
<b>Line screens</b>	175, 180, 180m, HMF-200
<b>Image size</b>	29 x 43 in maximum; Repeat length: 21.6 in minimum, 43 in maximum
<b>Substrate thickness</b>	0.4 to 10 pt.
<b>Substrate type</b>	Paper, film, (PET, BOPP, BOPA), shrink film (PETG, PVC, OPS) label stock (PE label), pre-laminates (PET/ALU/PE).
<b>Web width</b>	Maximum width: 30 in / Minimum width: 15.7 in
<b>Priming unwinder</b>	Max roll diameter: 39.4 in Max roll weight: 1870 lb Core inside diameter: <ul style="list-style-type: none"><li>• Standard 6 in adapter</li><li>• Optional 3 in</li></ul>
<b>Rewinder</b>	Maximum roll diameter: 31.5 in Maximum roll weight: 1540 lb
<b>Print server</b>	HP SmartStream Production Pro Print Server, HP SmartStream Labels and Packaging Print Server, Powered by Esko
<b>Press dimensions</b>	Width: 383 in; Height: 94 in; Depth: 185 in
<b>Press weight</b>	33,000 lb
<b>HP Indigo ElectroInks*</b>	
<b>Standard 4-color printing</b>	Cyan, magenta, yellow, and black
<b>5-color printing</b>	Cyan, magenta, yellow, black, and white
<b>HP IndiChrome 6-color printing</b>	Cyan, magenta, yellow, black, orange, violet, and violet for packaging
<b>HP IndiChrome Plus 7-color printing</b>	Cyan, magenta, yellow, black, orange, violet, violet for packaging, and green
<b>HP IndiChrome off-press spot inks</b>	HP IndiChrome Ink Mixing Service for spot color creation using CMYK as well as orange, violet, green, reflex blue, rhodamine red, bright yellow, and transparent
<b>PANTONE® colors</b>	Supports PANTONE PLUS®, PANTONE MATCHING SYSTEM®, and PANTONE Goe™ HP Professional PANTONE Emulation Technology using CMYK on-press; HP IndiChrome on-press; HP IndiChrome Plus on-press; HP IndiChrome Ink Mixing Service for achieving up to 97% of the PANTONE® color range.
<b>Options</b>	
<b>Expanded color capabilities</b>	5, 6, or 7 on-press ink stations
<b>Reinsertion</b>	Simplex
<b>Extended inspection capabilities</b>	Reverse Inspection Bridge (RIB)

\*Food products and packaging are a highly regulated sector, with varying requirements depending on where they are placed on the market. Therefore, converters are reminded to ensure that all materials utilized in the printing process are suited for the intended application and its conditions of use, and that the printing is performed in accordance with Good Manufacturing Practices. HP Indigo compliance with food packaging regulations: FDA, Title 21 of the Code of Federal Regulations for indirect food contact; Swiss Ordinance on Materials and Articles in Contact with Food, RS 817.023.21; EUPIA Guideline on Printing Inks Applied to the Non-Food Contact Surface of Food Packaging Materials and Articles (November 2011); Council of Europe Resolution ResAP (2005/2) for indirect food contact; Nestlé Guidance Note on Packaging Inks, exclusion lists for indirect food contact; German Food Law and Article 3 of the EU framework regulation 1935/2004, for non food contact.



Winner: InterTech Technology Awards 2014

Learn more at  
[hp.com/go/indigo](http://hp.com/go/indigo)

Sign up for updates  
[hp.com/go/getupdated](http://hp.com/go/getupdated)



Share with colleagues

Rate this document

© Copyright 2016 HP Development Company, L.P. The information contained herein is subject to change without notice.  
The only warranties for HP products and services are set forth in the express warranty statements accompanying such products and services. Nothing herein should be construed as constituting an additional warranty. HP shall not be liable for technical or editorial errors or omissions contained herein.  
PANTONE® and other Pantone, Inc. trademarks are the property of Pantone, Inc.

4AA6-4778ENW, March 2016.

