

HP Elite x2 Privacy Screen



Lock down visual access to your data.

Help protect your HP Elite x2's onscreen data from prying eyes with the HP Elite x2 Privacy Screen¹, which also supports your interactive touchscreen features.

Direct view just for you.

Retain onscreen visual clarity and touchscreen interactivity with a privacy filter that prevents passersby from sneaking a peek at your work by blocking peripheral views of the screen.

Durable design.

Get the added durability of a filter that resists scratches, fingerprints, and smudges.

Easy application.

Use the included adhesive strips to place on your HP Elite x2's screen, and reuse as needed.

No cutting or resizing required.

Experience a precise fit with a round-edged screen that doesn't interrupt access to your camera, speakers or inputs.

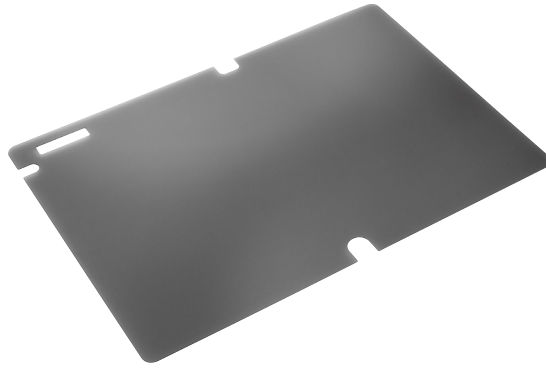
World-class support.

Rest easy with a one-year parts limited warranty.

1. Important: Drawing or writing on your HP Elite x2 with the pen while the HP Elite x2 Privacy Screen is installed may cause excessive pen tip wear. Pen use for writing or drawing while using the privacy screen is not recommended.

Specifications

HP Elite x2 Privacy Screen



| | |
|-------------------------------------|--|
| Part number | W7C36AA |
| Dimensions | 295.2 x 208.65 mm |
| Net Weight | 22 g |
| Weight with Complete Package | 148 g |
| Mechanical+ | |
| Functional film thickness | 290 um |
| Release film | 38 um |
| Property | |
| Viewing angle | 60 degrees |
| Light transmittance | 68% |
| Thickness | .29 mm |
| Environmental testing | |
| Heat resistance | 65° C, 240 hrs |
| Cold resistance | -30° C, 240 hrs |
| Humidity resistance | 40° C x 90% relative humidity, 240 hrs |
| Thermal shock | (-20° C x 1 hr — 60° C x 1 hr) x 5 times |

Sign up for updates
hp.com/go/getupdated



Share with colleagues



Rate this document

