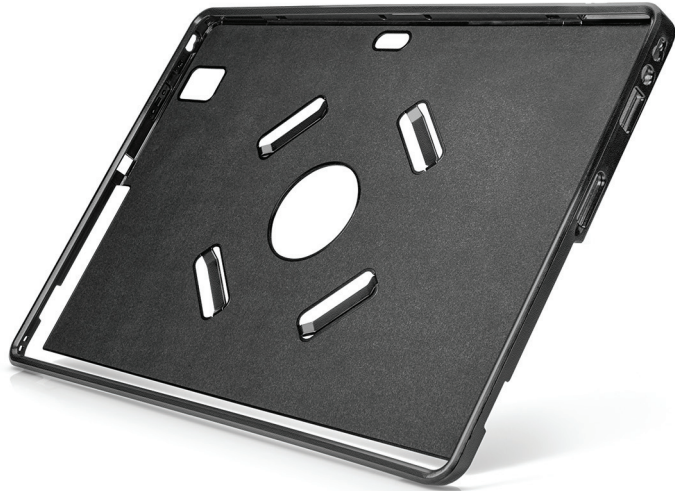


HP Elite x2 1012 Protective Case



Give your HP Elite x2 1012 an extra layer of protection wherever the day takes you with the stylish, business-class HP Elite x2 102 Protective Case.



Assemble in a snap

- Simply insert your tablet into the form-fitting, soft-lined case, which has cutouts for all the tablet's ports and inputs so you can stay connected, plus the kickstand so you can use it on a desk or table.

Add a keyboard

- Get additional productivity with the optional HP Travel or Advanced Keyboards, which are fully functional with the tablet in the case.

Be comfortable

- Carry the case by hand with integrated, removable hand strap or the included shoulder strap.

World-class support

- Rest easy with a one-year limited warranty.

HP Elite x2 1012 Protective Case



Compatibility	HP Elite x2 1012 G1 Tablet; HP Elite x2 1012 G1 Tablet with Travel Keyboard;
Dimensions	Out of Package: Case: 306 x 219.6 x 14.6 mm Shoulder strap: 106/172 cm (Adjustable) Dimensions (case or master carton, metric): 335 x 440 x 390 mm Case or master carton quantity: 10 Count of cartons per pallet layer: 8 Count of layers in pallet: 5 Quantity per Pallet: 400 Packed: 350 x 318 x 40 mm
Weight	Out of Package: 298 gr
Warranty	One-year limited warranty.
Additional information	P/N: T3P15AA UPC/EAN code: 889894524973
Country of Origin	China
What's in the box	Case; Shoulder Strap; Hand Strap; Documentation

¹ Sold separately.

© Copyright 2016 HP Development Company, L.P. The information contained herein is subject to change without notice. The only warranties for HP products and services are set forth in the express warranty statements accompanying such products and services. Nothing herein should be construed as constituting an additional warranty. HP shall not be liable for technical or editorial errors or omissions contained herein.

