



Put paper stacks to work for your office—
digitise documents with ease

HP ScanJet Pro 3000 s3



Fast scanning. Superb results. Every page.



Optimise workflows with one-touch scanning



Capture business documents like a pro

Fast scanning.
Superb results.
Every page.



Seamlessly and confidently capture stacks of mixed paper sizes and weights at scan speeds of up to 35 pages per minute (ppm), 70 images per minute (ipm).¹ Scan directly to mobile devices for on-the-go control with the optional low-cost wireless accessory.² Easily send documents to the cloud or the applications you use most, and create digital copies with rich, accurate images. Take on larger projects with fast one-pass duplex scanning and a recommended daily duty cycle of 3,500 pages.



The new office workaholic

Rely on this scanner time after time—recommended for 3,500 pages per day.



Fits where you need it

Free up space for work. This HP ScanJet Pro is small and slim—a modern design perfect for the desktop.



Superb paper handling

Capture every page easily—even stacks of mixed paper sizes and weights—with HP EveryPage and an ultrasonic sensor.³

Optimise workflows with one-touch scanning

Image capture

One-touch scans for recurring jobs

Streamline routine work—create one-button, custom scan settings for recurring jobs—with options for size, colour, and more.



50 page ADF

Quickly scan stacks of paper

Load up to 50 pages into the automatic document feeder (ADF) for fast, unattended scanning.

35 ppm
70 ipm

Scan both sides in one pass

Capture the entire document—front and back—all at once at up to 35 ppm/70 ipm in both colour and black-and-white.¹

300 dpi

Look sharp

Be clear the first time. Create crisp, legible files with 300-dpi resolution at full speed.

Processing

Scan to editable text, using built-in optical character recognition (OCR)

Easily transfer scans into editable text, secure PDF files, and a wide variety of other file types.

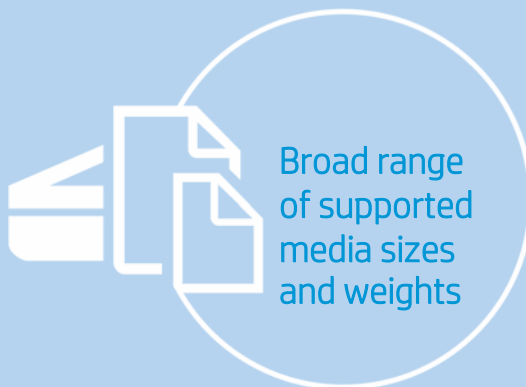


Included HP Scan software lets you define scan profiles and other destinations, and automatically enhance images and delete blank pages. Scans stay true with limited intervention.

Paper handling

Capture a wide range of document types

Depend on a compact office scanner that handles mixed paper sizes and weights.



Scan documents up to 21.6 x 309.9 cm, and paper weights from 40 g/m² to 413 g/m².

Delivery

Send scans directly to the cloud

Quickly share or archive. Send scans directly to popular cloud destinations—such as Dropbox and Google Drive™—with HP Scan software.



Email



Network folder

Capture business documents like a pro



Create custom profiles

Define scan profiles and other destinations, and automatically enhance images and delete blank pages. Scans stay true with limited intervention.



Easily manage digital documents

Capture and organise documents, business cards, and other file types with feature-rich software, including Nuance® PaperPort® and I.R.I.S. Readiris™ Pro and Cardiris™.



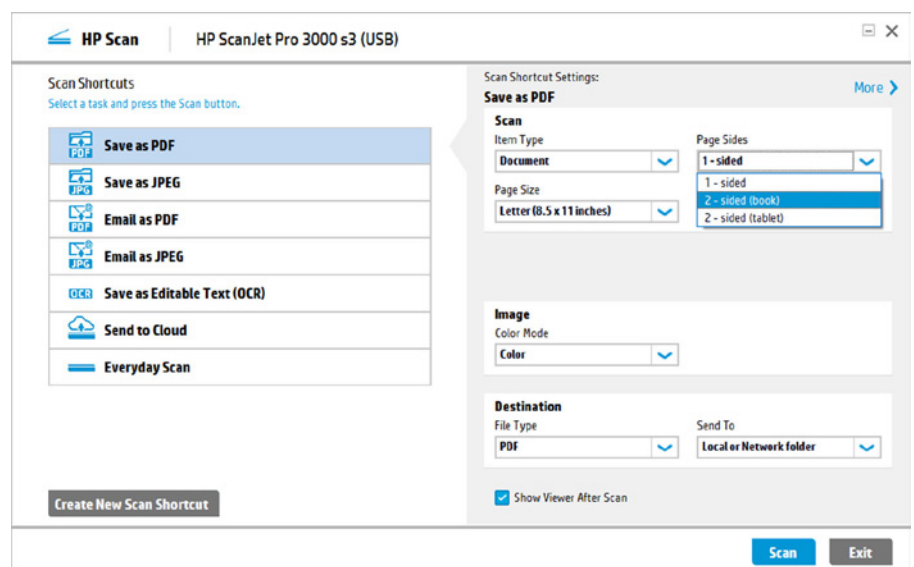
Simply scan to mobile devices

Send scans directly to mobile devices with the HP JetAdvantage Capture App and the optional low-cost HP ScanJet Wireless Adapter 100.² Edit the image, save as popular file types, send to cloud destinations, and more.

What does it do?

- Use convenient built-in shortcuts for typical scanning tasks
- Specify the most common scan settings
- Create a customised scan shortcut

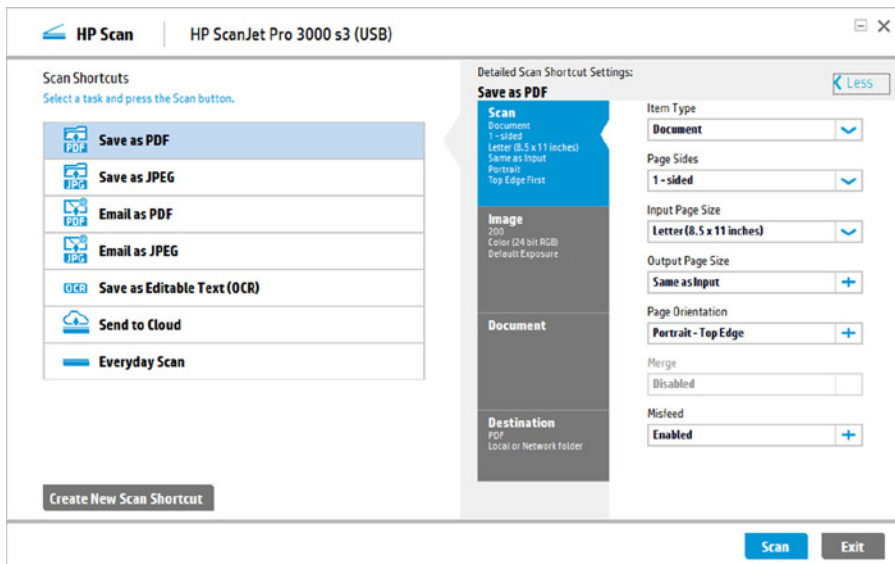
Simplify document capture with HP Scan software



Fast and easy, HP Scan software lets you scan with a single touch, capture text with OCR, and create custom profiles that simplify and improve workflows. Scan-to-cloud capabilities make it simple to capture and send information where you need it.

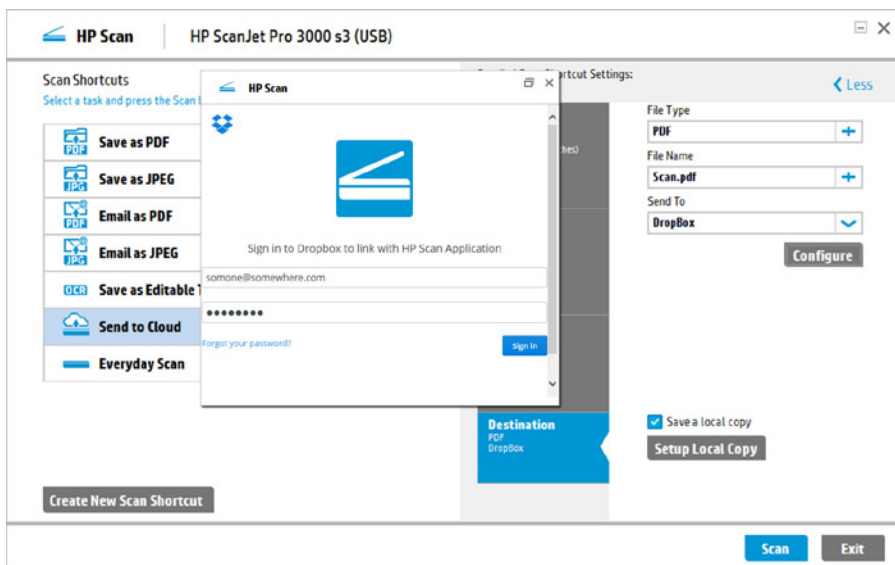
Simplify workflows

Create new scan profiles (or Scan Shortcuts) for the types of scan jobs you perform most often, with settings such as paper size, resolution, file format, and much more. Name the shortcuts to reflect the type of document, the task being performed, or whatever best meets your needs.

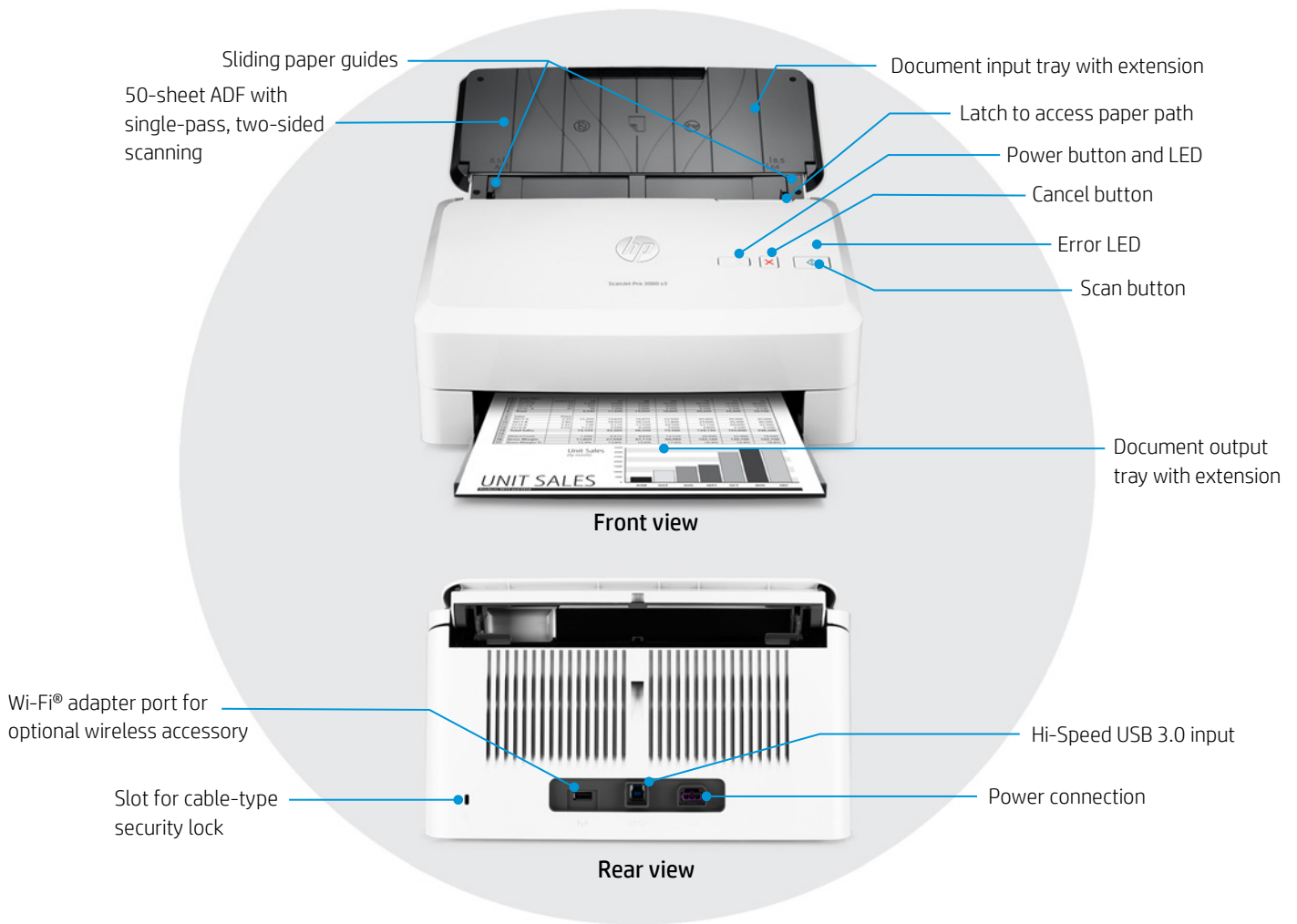


Send scans directly to the cloud

Scanned images can be sent to a local or network folder, attached directly to an email, or sent to popular cloud destinations—such as Dropbox and Google Drive,



Get to know the HP ScanJet Pro 3000 s3



What's new?



HP ScanJet Pro 3000 s3

Up to 35 ppm/70 ipm at 300 dpi (black-and-white, greyscale, and colour)¹

Supported media weight: 40 to 413 g/m²

Recommended daily duty cycle: 3,500 pages

Optional wireless scanning with the HP JetAdvantage Capture App²

USB 3.0 interface port

Built-in solution bundle includes HP Scan Software, Nuance PaperPort, I.R.I.S. Cardiris and Readiris Pro



HP ScanJet Pro 3000 s2

Up to 20 ppm/40 ipm at 300 dpi (black-and-white, greyscale, and colour)¹

Supported media weight: 49 to 120 g/m²

Recommended daily duty cycle: 1,000 pages

Not available

USB 2.0 interface port

Built-in solution bundle includes HP Easy Scan, Nuance PaperPort, I.R.I.S. Cardiris and Readiris

Save time with up to 75% faster two-sided scanning

Capture a wider range of media types

Increase productivity with 3.5x higher duty cycle

Professional, intuitive mobile scanning

Faster file transfer speeds

More inclusive solution set to increase productivity

Technical specifications

Product number	L2753A
Scanner type and modes supported	Sheet-feed scanning with ADF, single-pass two-sided scanning, colour, greyscale or black-and-white
Scan technology	CMOS Contact Image Sensor (CIS) using LED light source, dual-head ADF scanner
Other advanced features	Auto-colour detect, auto-crop, auto-exposure, auto-orient, OCR, edge removal, background cleanup, remove hole, colour drop out, straighten the page, scan to cloud, scan to email, PDF security, misfeed detection advance setting
Duty cycle (recommended)	3,500 pages per day
Control panel	Scan button, cancel button, power button with an LED, and an LED for error indication
Scan speed at 300 dpi¹ (colour, greyscale, or black-and-white)	Single-sided: up to 35 ppm; two-sided: up to 70 ipm
ADF scan resolution	Optical: up to 600 dpi Output dpi settings: 75, 150, 200, 240, 300, 400, 500, 600
Bit depth and greyscale	24-bit external, 48-bit internal; 256 greyscale levels
Compatibility	TWAIN (TWAIN certified, version 2.1), ISIS, WIA
File formats (text and images)	PDF, JPEG, PNG, BMP, TIFF, TXT (Text), RTF (Rich Text), searchable PDF
Scan input modes	One default scan mode on front-panel for HP scan in Windows® OS, HP Easy Scan/ICA in Mac OS, and third party applications via TWAIN, ISIS, and WIA
Memory	512 MB
Processor speed	550 MHz
ADF media specifications	
Input capacity	Up to 50 sheets
Custom sizes	5.08 x 7.4 cm to 21.6 x 309.9 cm (2.0 x 2.9 in to 8.5 x 122 in)
Standard sizes	A4, A5, A6, A7, A8, B5, B5 (JIS); Letter, Legal, Executive; long page support up to 122 in (309.9 cm)
Media weights	40 to 413 g/m ² (10.7 to 110 lb)
Media types	Cut sheet paper, printed paper (laser and ink), pre-punched paper, bank checks, business cards, freight bills, carbonless forms, previously stapled media with staple removed
Connectivity	USB 2.0 and SuperSpeed USB 3.0, optional USB 2.0 port for Wi-Fi accessory
Scan destinations	Scan to local or network folder, Scan to email (using SMTP or via locally configured email client), Scan to Microsoft® SharePoint®, Scan to cloud destinations, Scan to FTP, Scan to printer
Mobile capabilities²	Initiate scans directly from mobile devices via the optional HP ScanJet Wireless Adapter 100 using the HP JetAdvantage Capture App
Compatible operating systems	Microsoft Windows 10, 8.1, 8, 7 Mac OS X 10.9.5 Mavericks, OS X 10.10.5 Yosemite, OS X 10.11.5 El Capitan
Minimum system requirements, Windows	Microsoft Windows 10, 8.1, 8, 7: 32-bit or 64-bit, 2 GB available hard disk space, CD-ROM/DVD drive or Internet connection, USB port, Microsoft Internet Explorer
Minimum system requirements, Mac	Mac OS X Yosemite, OS X Maverick, OS X Mountain Lion; 1 GB available hard disk space; Internet required; USB; OS X 10.9 compatible computer
Dimensions (width x depth x height)	310 x 198 x 190 mm (12.20 x 7.79 x 7.48 in)
Weight	3.4 kg (7.5 lb)
What's in the box	HP ScanJet Pro 3000 s3 sheet-feed scanner engine, installation guide, support flyer, warranty guide, 2 CDs, power cord, USB cable, power adapter
Software included	HP WIA scan driver, HP TWAIN scan driver, HP Scan, HP Scanner Tools Utility, Nuance PaperPort (Windows only), I.R.I.S Readiris, I.R.I.S Cardiris (Windows only), EMC ISIS (Windows only)
Warranty	One-year bench limited warranty whole unit replacement, phone and Web support included. Warranty may vary by country as required by law. Go to hp.com/support to learn about HP world-class service and support options in your region.

Environmental ranges

Temperatures	Recommended operating: 10 to 35° C (50 to 95° F); Storage: -40 to 60° C (-40 to 140° F)
Relative humidity range	Operating range: 15 to 80% RH (non-condensing); Storage range: 0 to 90% RH (non-condensing)

Acoustic sound power emissions Scanning: 6.1 B(A)

Power specifications⁴ ENERGY STAR® certified, CECP, EPEAT® Silver registered models available⁵

Power supply	Universal AC adapter; Input: 90 to 264 VAC (50/60 Hz)
Power consumption	Ready: 4.2 watts, Sleep: 0.7 watts, Off/Auto-off: 0.1 watts
Energy-saving features	HP Auto-Off technology, LED light source (no warm-up time required) ⁶

Environmental specifications RoHS-compliant, HP GSE standard

Safety and regulatory compliance IEC 60950-1:2005 +A1 +A11 +A12 and all applicable amendments; CSA/UL 60950-1, 2nd edition (2007); EN 60950-1:2006 +A11 +A1 +A12 +A2; EAC safety; Canada cUL CoC; China CCC; European Union CE; Kenya PVOC; Kuwait TER; Nigeria SON; Saudi Arabia SASO; South Africa NRCS; Taiwan BSMI; Ukraine safety approval

Certifications and compliances UL Listed; European Union CE; Australia RCM; China CCC; EAC; Kenya PVOC; Kuwait TER; Nigeria SON; Saudi Arabia SASO; South Africa NRCS; Taiwan BSMI; Ukraine approval; ENERGY STAR v 2.0; RoHS (Directive 2011/65/EU); ErP Lot 26; EPEAT Silver

Electromagnetic emission standard Class B Emissions; CISPR 22:2008 (International); European Union EMC Directive 2014/30/EU, EN 55022:2010 (CE mark); China GB9254-2008 (CCC); Taiwan CNS13438:2006 (BSMI); USA CFR47 Part 15, Subpart B (FCC); ICES-003:2012 Issue 6 (Canada); Australia C-tick (includes New Zealand); KN 22 and Korea KCC; EAC EMC Certificate; Ukraine EMC approval; EN 61000-3-2:2014 (harmonics); EN 61000-3-3:2013 (flicker); Immunity CISPR 24:2010, EN 50024:2010; other EMC approvals as required by individual countries

Ordering information

Use accessories and supplies specifically designed for the scanner to help provide efficient performance. To order the accessories and supplies listed here, go to hp.com. To contact HP by country, please visit hp.com/go/contact. If you don't have access to the Internet, contact your qualified HP dealer.

Scanner	HP ScanJet Enterprise Pro 3000 s3 sheet-feed scanner HP Wireless Adapter 100	L2753A L2761A
HP Services	Make sure your imaging and printing investments are protected with Care Pack, part of HP Care. Pick your package of services to keep your scanner running and your business moving. Now your office can spend less time trouble-shooting and more time getting things done. ⁷	
Boost performance—it's your choice. HP Care provides options to help you manage imaging and printing—from Care Pack services to customisable and advisory services. With HP Managed Print Services, we oversee everything for you.	HP 3-year Next Business Day Exchange ScanJet Pro 3000 s3 Service HP 3-year Return ScanJet Pro 3000 s3 Service	U9JR1E U9JR3E
Supplies	ADF Roller Replacement Kit	L2754A

Learn more at
hp.com

¹ Scan speed measured at 300 dpi (black-and-white, greyscale, and colour). Actual processing speeds may vary depending on scan resolution, network conditions, computer performance, and application software.

² Scanning from a mobile device requires the HP Wireless Adapter 100 (L2761A), which must be purchased separately, and the HP JetAdvantage Capture App. The app is available for mobile devices running Android™ version 4.0 and higher, and can be downloaded from the [Google Play™ store](https://play.google.com/store/apps/details?id=com.hp.printcapture). For more information, see hp.com/go/documentmanagement. Wireless performance is dependent on physical environment and distance from access point and may be limited during active VPN connections. Wi-Fi Direct® scanning requires the mobile device to be connected directly to the Wi-Fi® network of the scanner. Wi-Fi and Wi-Fi Direct are registered trademarks of Wi-Fi Alliance®.

³ HP EveryPage is referred to as HP Precision Feed on HP ScanJet devices introduced prior to May 2013.

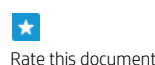
⁴ Power requirements are based on the country/region where the scanner is sold. Do not convert operating voltages. This will damage the device and void the product warranty.

⁵ EPEAT Silver registered models of this product are available where HP registers imaging and equipment products (Australia only).

⁶ Compared with products that use cold cathode fluorescent lamp (CCFL) copying.

⁷ Service levels and response times may vary depending on your geographic location. Service starts on date of hardware purchase. Restrictions and limitations apply. For details, visit hp.com/go/cpc.

Sign up for updates
hp.com/go/getupdated



© Copyright 2016 HP Development Company, L.P. The information contained herein is subject to change without notice. The only warranties for HP products and services are set forth in the express warranty statements accompanying such products and services. Nothing herein should be construed as constituting an additional warranty. HP shall not be liable for technical or editorial errors or omissions contained herein.

ENERGY STAR is a registered trademark owned by the U.S. Environmental Protection Agency. Android, Google Drive, and Google Play are trademarks of Google Inc. Microsoft and Windows are U.S. registered trademarks of the Microsoft group of companies.

4AA6-6753EEP, September 2016, Rev. 1

