



From paper stacks to clear desks—  
for a great value

## HP ScanJet Pro 2000 s1



Small size. Fast scans.  
Same reliable results.



Optimise workflows with  
one-touch scanning



Capture business  
documents like a pro

Small size.  
Fast scans.  
Same reliable  
results.



Affordable duplex scanning that fits your pace and workflows. Get fast, two-sided scans in a single pass, and send scans directly to the cloud or frequently used applications. Scan speeds up to 24 pages per minute (ppm)/48 images per minute (ipm) and a 50-page automatic document feeder (ADF) make it easy to handle larger projects.<sup>1</sup> Create digital copies that match expectations with rich, accurate images. This compact office scanner is recommended for 2,000 pages per day.



**2,000**  
pages per day

The new office workaholic

Rely on this scanner time after time—recommended for 2,000 pages per day.



Fits where you need it

Free up space for work. This HP ScanJet Pro is small and slim—a modern design perfect for the desktop.



Start fast with every scan

Don't wait for warm-up—HP Instant-on scanning lets you begin scanning quickly.<sup>2</sup>

# Optimise workflows with one-touch scanning

## Image capture

### One-touch scans for recurring jobs

Streamline routine work—create one-button, custom scan settings for recurring jobs—with options for size, colour, and more.



50<sup>page</sup>  
ADF

### Quickly scan stacks of paper

Load up to 50 pages into the automatic document feeder for fast, unattended scanning.

24<sup>ppm</sup>  
48<sup>ipm</sup>

### Scan both sides in one pass

Capture the entire document—front and back—all at once at up to 24 ppm/48 ipm in both colour and black-and-white.<sup>1</sup>

300  
dpi

### Look sharp

Be clear the first time. Create crisp, legible files with 300-dpi resolution at full speed.

## Processing

### Scan to editable text, using built-in optical character recognition (OCR)

Easily transfer scans into editable text, secure PDF files, and a wide variety of other file types.



Included HP Scan software lets you define scan profiles and other destinations, and automatically enhance images and delete blank pages. Scans stay true with limited intervention.

## Delivery

### Send scans directly to the cloud

Quickly share or archive. Send scans directly to popular cloud destinations—such as Dropbox and Google Drive™—with HP Scan software.



Email



Network folder

# Capture business documents like a pro



## Create custom profiles

Define scan profiles and other destinations, and automatically enhance images and delete blank pages. Scans stay true with limited intervention.



## Easily manage digital documents

Capture and organise documents, business cards, and other file types with feature-rich software, including Nuance® PaperPort® and I.R.I.S. Readiris™ Pro and Cardiris™.



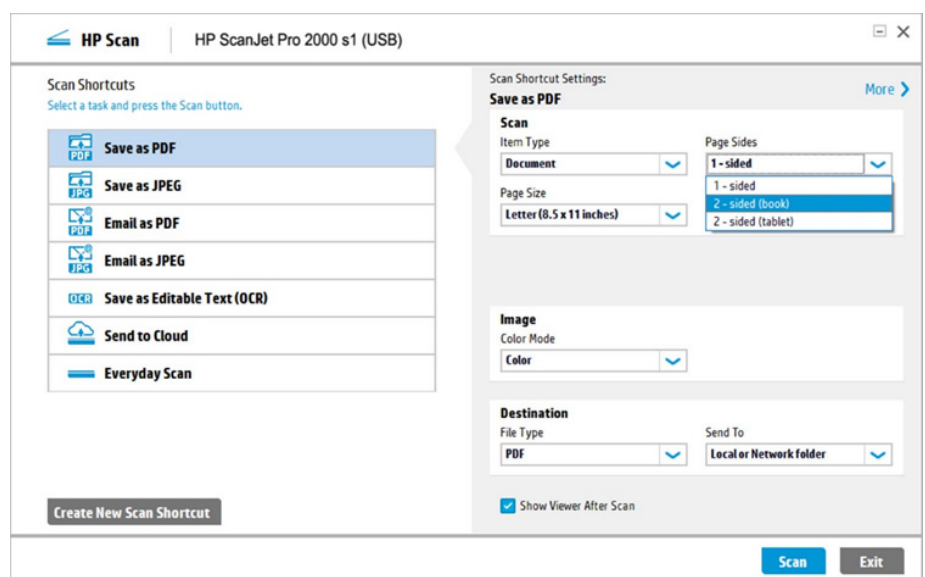
## Scan into popular applications

Integrate easily with popular and in-house software. Scan images directly into applications, with included and full-featured TWAIN and ISIS®.

### Optimise workflows with one-touch scanning

- Use convenient built-in scan profiles (shortcuts) for typical scanning tasks
- Specify the most common scan settings
- Create a customised scan shortcut

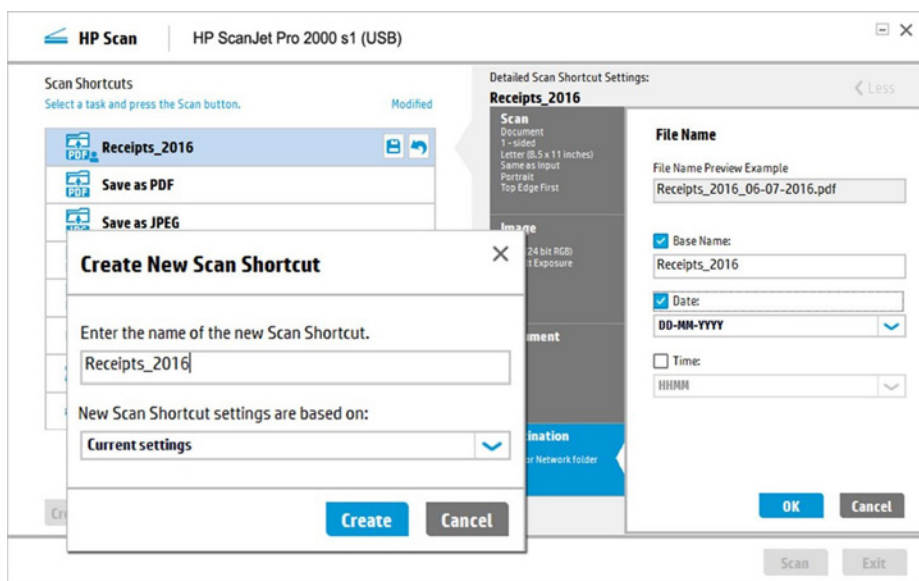
## Simplify document capture with HP Scan software



Fast and easy, HP Scan software lets you scan with a single touch, capture text with OCR, and create custom profiles that simplify and improve workflows. Scan-to-cloud capabilities make it simple to capture and send information where you need it.

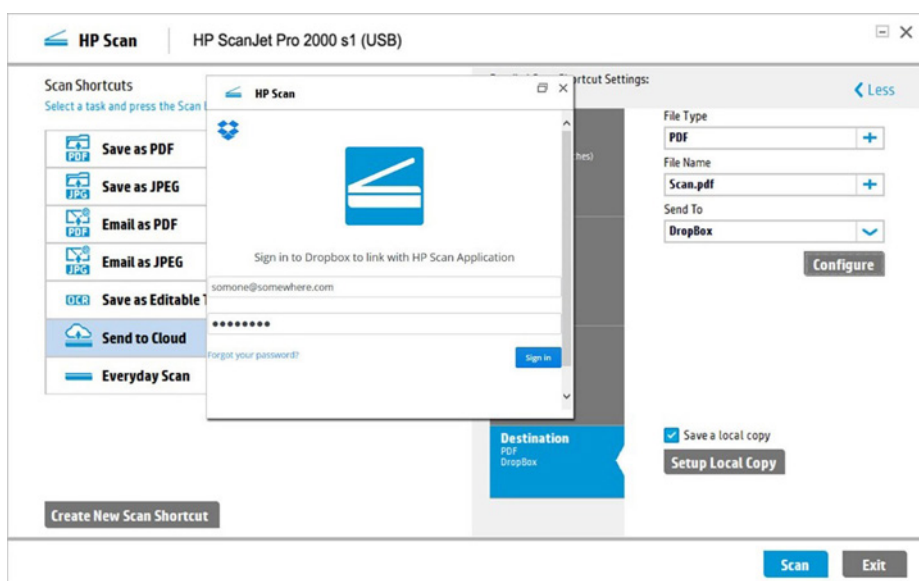
### Save customised shortcuts

Quickly scan using your most-used settings—then save the settings as a new shortcut. Now you can consistently execute jobs at the touch of a button.

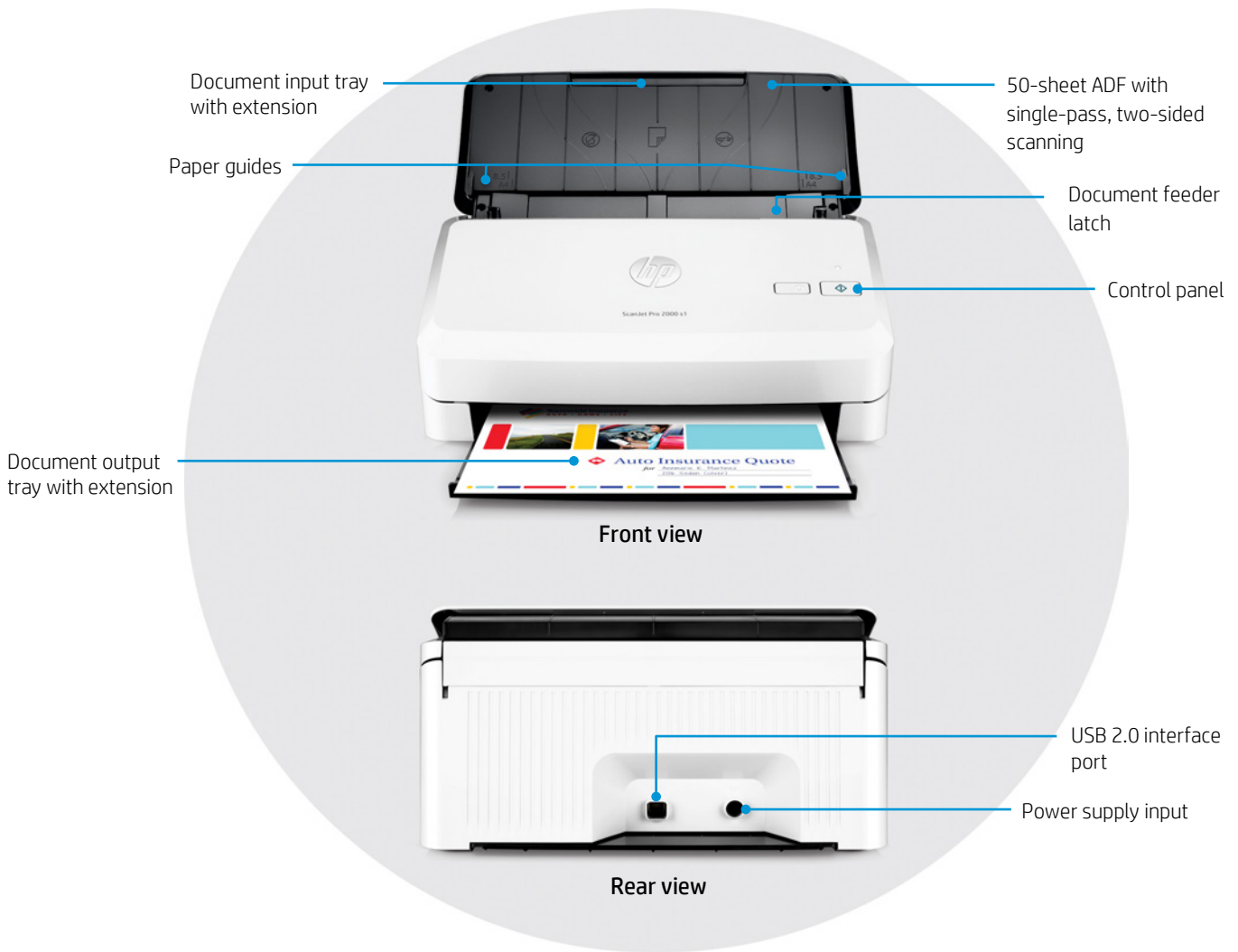


### Send scans directly to the cloud

Quickly share or archive scans to the cloud. Send images directly to popular cloud destinations—such as Dropbox and Google Drive—with HP Scan software.



# Get to know the HP ScanJet Pro 2000 s1



## What's new?



HP ScanJet Pro 2000 s1

Up to 24 ppm/48 ipm at 300 dpi (black-and-white, greyscale, and colour)<sup>1</sup>

Supported media weight: 50 to 180 g/m<sup>2</sup>

Recommended daily duty cycle: 2,000 pages

TWAIN (certified), ISIS, WIA



HP ScanJet Pro 3000 s2

Up to 20 ppm/40 ipm at 300 dpi (black-and-white, greyscale, and colour)<sup>1</sup>

Supported media weight: 50 to 120 g/m<sup>2</sup>

Recommended daily duty cycle: 1,000 pages

TWAIN, ISIS, WIA

Save time with up to 20% faster two-sided scanning

Capture a wide range of media types with 50% greater supported media weight

Increase productivity with 2x higher duty cycle

Integrate easily with popular and in-house software

# Technical specifications

|   |   |
|---|---|
| <b>Product number</b>   | L2759A  |
| <b>Scanner type and modes supported</b>                                     | Sheet-feed scanning with ADF, single-pass two-sided scanning, colour, greyscale or black-and-white  |
| <b>Scan technology</b>  | CMOS Contact Image Sensor (CIS) using LED light source, dual-head ADF scanner   |
| <b>Other advanced features</b>  | Auto-colour detect, auto-crop, auto-exposure, auto-orient, OCR, edge removal, background cleanup, remove hole, colour drop out, straighten the page, scan to cloud, scan to email, PDF security   |
| <b>Duty cycle (recommended)</b>   | 2,000 pages per day   |
| <b>Control panel</b>  | Scan button, power button, and error LED  |
| <b>Scan speed at 300 dpi<sup>1</sup> (colour, grey, or black-and-white)</b> | Single-sided: up to 24 ppm; two-sided: up to 48 ipm   |
| <b>ADF scan resolution</b>  | Optical: up to 600 dpi<br>Output dpi settings: 75, 150, 200, 240, 300, 400, 500, 600  |
| <b>Bit depth and greyscale</b>  | 24-bit (external), 48-bit (internal); 256 greyscale levels  |
| <b>Compatibility</b>  | TWAIN (TWAIN certified, version 2.1), ISIS, WIA   |
| <b>File formats (text and images)</b>                                       | PDF, JPEG, PNG, BMP, TIFF, TXT (Text), RTF (Rich Text), searchable PDF  |
| <b>Scan input modes</b>   | One default scan mode on front panel for HP Scan in Windows® OS, HP Easy Scan/ICA in Mac OS, third-party applications via TWAIN, ISIS, and WIA  |
| <b>Memory</b>   | 64 MB   |
| <b>Processor speed</b>  | 120 MHz   |
| <b>ADF media specifications</b>   |   |
| Input capacity  | Up to 50 sheets   |
| Custom sizes  | 5.08 x 5.08 cm to 21.6 x 86.36 cm (2 x 2 in to 8.5 x 34 in)   |
| Standard sizes  | A4, A5, A6, A7, A8, B5, B5 (JIS); Letter, Legal, Executive; long page support up to 86.36 cm (34 in)  |
| Media weights   | 50 to 180 g/m <sup>2</sup> (13 to 47 lb)  |
| Media types   | Cut sheet paper, printed paper (laser and ink), pre-punched paper, bank checks, business cards, freight bills, carbonless forms, previously stapled media with staples removed  |
| <b>Connectivity</b>   | Hi-Speed USB 2.0  |
| <b>Scan destinations</b>  | Scan to local or network folder, Scan to email (using SMTP or via locally configured email client), Scan to Microsoft® SharePoint, Scan to cloud destinations, Scan to FTP, Scan to printer   |
| <b>Compatible operating systems</b>   | Microsoft Windows 10, 8.1, 8, 7<br>Mac OS X 10.9.5 Mavericks, OS X 10.10.5 Yosemite, OS X 10.11.5 El Capitan  |
| <b>Minimum system requirements, Windows</b>                                 | Microsoft Windows 10, 8.1, 8, 7: 32-bit or 64-bit, 2 GB available hard disk space, CD-ROM/DVD drive or Internet connection, USB port, Microsoft Internet Explorer   |
| <b>Minimum system requirements, Mac</b>                                     | Mac OS X Yosemite, OS X Maverick, OS X Mountain Lion; 1 GB available hard disk space; Internet required; USB; OS X 10.9 compatible computer   |
| <b>Dimensions (width x depth x height)</b>                                  | 300 x 172.9 x 152.1 mm (11.8 x 6.8 x 6 in)  |
| <b>Weight</b>   | 2.6 kg (5.7 lb)   |
| <b>What's in the box</b>  | HP ScanJet Pro 2000 s1 scanner; Install guide; Support flyers; Warranty cards; 2 CDs; Power cords; Power adapter; USB cables (all regions)  |
| <b>Software included</b>  | HP WIA scan driver (Windows only), HP TWAIN scan driver (certified), HP Scan, HP Scanner Tools Utility, Nuance PaperPort (Windows only), I.R.I.S. Readiris (Windows only), I.R.I.S. Cardiris, EMC ISIS (Windows only)   |
| <b>Warranty</b>   | One-year bench limited warranty whole unit replacement, phone and Web support included. Warranty may vary by country as required by law. Go to <a href="http://hp.com/support">hp.com/support</a> to learn about HP world-class service and support options in your region. |

## Environmental ranges

|  |  |
|--|--|
| Temperatures                             | Recommended operating: 10 to 35° C (50 to 95° F); Storage: -40 to 60° C (-40 to 140° F)  |
| Relative humidity range                  | Operating range: 15 to 80% RH (non-condensing); Storage range: 0 to 90% RH (non-condensing)  |
| <b>Acoustic sound power emissions</b>    | Scanning: 5.9 B(A)   |
| <b>Power specifications<sup>3</sup></b>  | ENERGY STAR® certified; CECP   |
| Power supply                             | External power adapter; Input: 90 to 246 VAC (50/60 Hz)  |
| Power consumption                        | Ready: 3.6 watts, Sleep: 1.0 watts, Off/Auto-off: 0.1 watts  |
| Energy-saving features                   | HP Auto-Off technology, LED light source (no warm-up time required) <sup>2</sup>   |
| <b>Environmental specifications</b>      | RoHS-compliant   |
| <b>Safety and regulatory compliance</b>  | IEC 60950-1:2005 +A1+A11+A12 and all applicable amendments; CSA/UL 60950-1, 2nd edition (2007); EN 60950-1:2006 +A11 +A1 +A12 +A2; EAC safety; Canada cUL CoC; China CCC; European Union CE; Kenya PVOC; Kuwait TER; Nigeria SON; Saudi Arabia SASO; South Africa NRCS; Taiwan BSMI; Ukraine safety approval   |
| <b>Certifications and compliances</b>    | UL Listed; European Union CE; Australia RCM; China CCC; EAC; Kenya PVOC; Kuwait TER; Nigeria SON; Saudi Arabia SASO; South Africa NRCS; Taiwan BSMI; Ukraine approval; ENERGY STAR   |
| <b>Electromagnetic emission standard</b> | Class B Emissions; CISPR 22:2008 (International); European Union EMC Directive 2014/30/EU, EN 55022:2010 (CE mark); China GB9254-2008 (CCC); Taiwan CNS13438:2006 (BSMI); USA CFR47 Part 15, Subpart B (FCC); ICES-003:2012 Issue 6 (Canada); Australia C-tick (includes New Zealand); KN 22 and Korea KCC; EAC EMC Certificate; Ukraine EMC approval; EN 61000-3-2:2014 (harmonics); EN 61000-3-3:2013 (flicker); Immunity CISPR 24:2010, EN 50024:2010 |

## Ordering information

Use accessories and supplies specifically designed for the scanner to help provide efficient performance. To order the accessories and supplies listed here, go to [hp.com](http://hp.com). To contact HP by country, please visit [hp.com/country/us/en/wwcontact\\_us.html](http://hp.com/country/us/en/wwcontact_us.html).

If you don't have access to the Internet, contact your qualified HP dealer, or call HP (U.S.) at (800) 282-6672.

|  |  |         |
|--|--|---------|
| <b>Scanner</b>   | HP ScanJet Pro 2000 s1 sheet-feed scanner  | L2759A  |
| <b>HP Services</b>   | Make sure your imaging and printing investments are protected with Care Pack, part of HP Care. Pick your package of services to keep your scanner running and your business moving. Now your office can spend less time trouble-shooting and more time getting things done. <sup>4</sup> |         |
| Boost performance—it's your choice. HP Care provides options to help you manage imaging and printing—from Care Pack services to customisable and advisory services. With HP Managed Print Services, we oversee everything for you. | HP 3-year Next Business Day Exchange ScanJet Pro 2000 Service  | U9JQ3E  |
|  | HP 3-year Next Business Day Onsite Exchange ScanJet Pro 2000 Service   | U9JQ4E  |
|  | HP 1-year Post Warranty Next Business Day Exchange ScanJet Pro 2000 Service  | U9JQ7PE |
|  | HP 1-year Post Warranty Next Business Day Onsite Exchange ScanJet Pro 2000 Service   | U9JQ8PE |
| <b>Supplies</b>  | HP ScanJet Pro 2000 s1 roller replacement kit  | L2760A  |

Learn more at  
[hp.com](http://hp.com)

<sup>1</sup> Scan speed measured at 300 dpi (black-and-white, greyscale, and colour). Actual processing speeds may vary depending on scan resolution, network conditions, computer performance, and application software.

<sup>2</sup> Compared with products that use cold cathode fluorescent lamp (CCFL) copying.

<sup>3</sup> Power requirements are based on the country/region where the scanner is sold. Do not convert operating voltages. This will damage the device and void the product warranty.

<sup>4</sup> Service levels and response times may vary depending on your geographic location. Service starts on date of hardware purchase. Restrictions and limitations apply. For details, visit [hp.com/go/cpc](http://hp.com/go/cpc).

Sign up for updates  
[hp.com/go/getupdated](http://hp.com/go/getupdated)



Share with colleagues



Rate this document

© Copyright 2016 HP Development Company, L.P. The information contained herein is subject to change without notice. The only warranties for HP products and services are set forth in the express warranty statements accompanying such products and services. Nothing herein should be construed as constituting an additional warranty. HP shall not be liable for technical or editorial errors or omissions contained herein.

ENERGY STAR is a registered trademark owned by the U.S. Environmental Protection Agency. Google Drive is a registered trademark of Google Inc. Microsoft, Windows, and Windows Vista are U.S. registered trademarks of the Microsoft group of companies.

4AA6-6754EEE, July 2016

