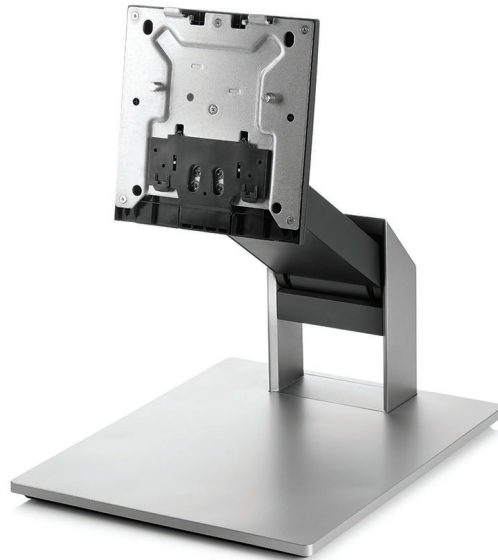




HP EliteOne G3 800 AiO Recline Stand

Create a customized workspace for your HP All-in-One with the HP EliteOne 800 G3 AiO Recline Stand, which allows you to recline the system for maximum usability in a range of settings.



HP display, HP Desk Dock, HP keyboard and mouse sold separately, availability may vary.

Get comfortable

Find your best angle for screen viewing and interactivity with adjustable recline settings.

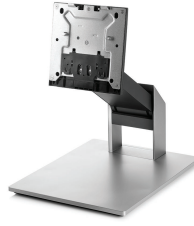
Easy assembly

Simply attach your HP AiO to the VESA bracket on the stand. The sturdy design is built to withstand up to 10,000 tilt mechanisms.

Rest easy

Get the reassurance of a one-year limited warranty.

Specifications



Dimensions (H x L x W)	12.91 x 10.63 x 8.66 in (328 x 270 x 220 mm)
Weight	7.8 lb (3.54 kg)
Compatibility/ System requirements	Compatible with the HP EliteOne 800 G3 23.8-inch Non-Touch All-in-One PC; HP EliteOne 800 G3 23.8-inch Touch All-in-One PC
Feature Summary	Height adjustment: 178 mm + 2 mm vertical; Tilt angle: -5° to +65° (+/-3°); Swivel: 360°; Operating life: 5,000 cycles on lift and tilt mechanisms; Color: Asteroid; VESA external mounting: Supports 100x100 mm VESA standard
Kit contents	HP EliteOne G3 800 AIO Recline Stand
Service and support	1-year limited warranty.

