



# HP Latex 3600 Printer

Maximize uptime and overnight printing with a 3.2 m (126 in) workhorse printer



## See robust quality at every speed

- Print at high speeds—120 m<sup>2</sup>/hr (1290 ft<sup>2</sup>/hr)—and suppress banding with HP Dynamic Swath Alignment, OMAS technology
- Superior indoor quality beats UV<sup>2</sup>—smooth transitions, sharp image quality, and preserve media texture
- Handle demanding tiling jobs with confidence—color consistency  $\leq 1$  dE2000 (95% of colors) in tiling mode<sup>3</sup>

## Maximize uptime, stay in control

- HP helps keep you up and running with direct support, including HP remote diagnostics<sup>4</sup>
- Handle production peaks, without risk—this printer is designed and tested to support up to 35,000 m<sup>2</sup> (350,000 ft<sup>2</sup>)/mo<sup>5</sup>
- Stay in control in-plant and online—HP Print Beat application, printer status beacon, HP Latex Mobile<sup>6</sup>

## Help drive down costs

- You can save time and money—with automatic maintenance, no daily printhead maintenance is required
- Minimize labor costs—a single operator can manage up to four printers at the same time
- Help further reduce cost—heavy-duty rolls for fewer roll changes, 10-liter HP ink supplies for overnight runs

For more information, please visit [hp.com/go/Latex3600](http://hp.com/go/Latex3600)

Join the community, find tools, and talk to experts. Visit the HP Latex Knowledge Center at [hp.com/communities/LKC](http://hp.com/communities/LKC)

<sup>1</sup> Printed in Outdoor mode (3-pass, 6-color, 80%).

<sup>2</sup> Based on HP internal testing of prints produced using Indoor High Quality mode (6-pass, 6-color, 100%) at 77 m<sup>2</sup> (830 ft<sup>2</sup>)/hr compared to similar performance of select UV printers under \$400,000 USD as of March 2017.

<sup>3</sup> The color variation inside a printed job, when printed with tiling optimized media, has been measured to be with maximum color difference  $\leq 1$  dE2000 (95% of colors) in "Optimize for tiling" mode. Tested on Ahlstrom 5087 wallpaper with stable printing condition within a stable media and a nominal printer. Reflective measurements on a 943 color target under CIE standard illuminant D50, and according to the standard CIEDE2000 as per CIE Draft Standard DS 014-6/E:2012. 5% of colors may experience variations above the specs mentioned. Backlit substrates measured in transmission mode may yield different results.

<sup>4</sup> HP remote monitoring and diagnostics requires an upgrade to the service contract with HP.

<sup>5</sup> Based on HP internal testing, the HP Latex 3600 Printer can reliably handle production peaks up to 35,000 m<sup>2</sup> (350,000 ft<sup>2</sup>) per month (in 6-pass print mode). Repeat monthly production at this volume is not recommended and may require additional maintenance.

<sup>6</sup> HP Latex Mobile is compatible with Android™ 4.1.2 or later and iOS 7 or later, and requires the printer and the smart phone or tablet to be connected to the Internet.

# HP Latex 3600 Printer (3.2 m / 126 in)

**HP Latex Optimizer**  
High image quality at high speed

## End-to-end sustainability—a better approach

HP Latex Technology delivers all the certifications that matter to your operators, your business, and the environment.<sup>7</sup>



UL ECOLOGO<sup>8</sup>

Using water-based inks eliminates exposure to inks with hazard warning labels and high solvent concentrations, and simplifies ventilation, storage, and transportation requirements.

HP Latex Inks enable more differentiation—odorless prints go where solvent and UV can't.



UL GREENGUARD GOLD<sup>9</sup>

HP is designing end-to-end sustainability into large-format printing.



HP Planet Partners Program<sup>10</sup>  
HP Large Format Media take-back program<sup>11</sup>

## 10-liter HP Latex Inks

Odorless prints, with scratch resistance comparable to hard-solvent inks on SAV and PVC banner<sup>12</sup>



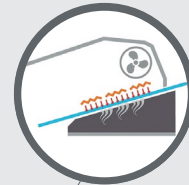
## HP OMAS & spectrophotometer

Reliable print quality—get the color and quality you expect



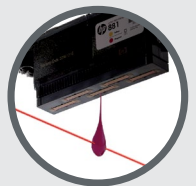
## HP Latex printheads

1200 dpi native resolution—high image quality over the life of the printer



## High-efficiency curing

Instant dry—prints are completely dry immediately after printing



## Automatic maintenance

Automatic drop detection and nozzle replacement



<sup>7</sup> Based on a comparison of HP Latex Ink technology to competitors with leading market share as of December, 2013 and analysis of published MSDS/SDSs and/or internal evaluation. Performance of specific attributes may vary by competitor and ink technology/formulation.

<sup>8</sup> Applicable to HP Latex Inks. UL ECOLOGO® Certification to UL 2801 demonstrates that an ink meets a range of multi-attribute, lifecycle based criteria related to human health and environmental considerations (see [ul.com/EL](http://ul.com/EL)).

<sup>9</sup> Applicable to HP Latex Inks. UL GREENGUARD GOLD Certification to UL 2818 demonstrates that products are certified to UL's GREENGUARD standards for low chemical emissions into indoor air during product usage. For more information, visit [ul.com/gg](http://ul.com/gg) or [greenguard.org](http://greenguard.org).

<sup>10</sup> Visit [hp.com/recycle](http://hp.com/recycle) to see how to participate and for HP Planet Partners program availability; program may not be available in your area. Where this program is not available, and for other consumables not included in the program, consult your local waste authorities on appropriate disposal.

<sup>11</sup> HP Large Format Media take-back program availability varies. Some recyclable HP papers can be recycled through commonly available recycling programs. Recycling programs may not exist in your area. See [HPLFMedia.com/hp/ecosolutions](http://HPLFMedia.com/hp/ecosolutions) for details.

<sup>12</sup> Scratch-resistance comparison based on testing third-generation HP Latex Inks and representative hard-solvent inks. Estimates by HP Image Permanence Lab on a range of media.

<sup>13</sup> Printing double-sided backlit applications requires the optional HP Latex 3000 Double-sided Day Night Kit. Front-to-back image registration accuracy of 2 mm or better when using certified PVC banner and paper media, see [hp.com/go/mediasolutionslocator](http://hp.com/go/mediasolutionslocator).

<sup>14</sup> HP Latex Mobile is compatible with Android™ 4.1.2 or later and iOS 7 or later, and requires the printer and the smart phone or tablet to be connected to the Internet.

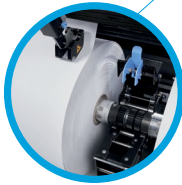
HP Latex Technol

# HP Latex 3600 Printer



## Heavy-duty roll handling

Load rolls up to 300 kg (660 lb) and 40 cm (15.75 in) in diameter



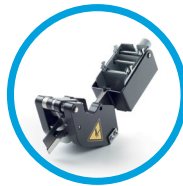
## Dual-roll split spindles

Print two rolls in parallel up to 200 kg (440 lb) each; quick, single-operator roll change



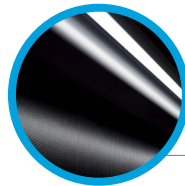
## In-line slitters

Reduce bottlenecks in finishing and achieve quicker turnaround times



## Proofing lights

Output and print zone LED lighting for on-the-fly visual inspection



## Ink collector kit (optional)

Print unlined mesh banner and porous textiles



## Double-sided day night kit (optional)<sup>13</sup>

Easily produce double-sided backlit applications for color-accurate outdoor advertising displays in any light—front or backlit



## Printer monitoring tools

Improve operational efficiency with the printer status beacon, HP Latex Mobile,<sup>14</sup> HP PrintBeat



## Internal print server

Efficiently manage the job queue and settings



Technology



## Technical specifications

<b>Printing</b>	Printing modes	27 m <sup>2</sup> /hr (290 ft <sup>2</sup> /hr) - High Saturation Backlits (18-pass 6c 230%) 44 m <sup>2</sup> /hr (470 ft <sup>2</sup> /hr) - Textiles and Canvas (10-pass 6c 170%) 77 m <sup>2</sup> /hr (830 ft <sup>2</sup> /hr) - Indoor High Quality (6-pass 6c 100%) 120 m <sup>2</sup> /hr (1290 ft <sup>2</sup> /hr) - Outdoor (3-pass 6c 80%) 180 m <sup>2</sup> /hr (1950 ft <sup>2</sup> /hr) - Billboard (2-pass 4c 70%)
	Print resolution	Up to 1200 x 1200 dpi
	Ink cartridges	Black, cyan, light cyan, light magenta, magenta, yellow, HP Latex Optimizer
	Cartridge size	10 liter
	Color consistency	Maximum color difference (95% of colors) ≤ 2 dE2000 in "Optimize for tiling" mode <sup>15</sup>
	<b>Media</b>	Handling
	Media types	Banners, self-adhesive vinyls, films, papers, wallcoverings, canvas; mesh and porous textiles with optional ink collector
	Roll size	Single roll up to 3.2 m (126 in) Dual roll up to 2 x 1.55 m (2 x 61 in)
	Roll weight	Single roll up to 300 kg (660 lb) Dual roll up to 2 x 200 kg (2 x 440 lb)
	Roll diameter	Up to 40 cm (15.75 in)
	Thickness	Up to 0.4 mm (0.015 in), by default Up to 2.0 mm (0.08 in), with custom carriage height setting
	Double-sided blackout	Registration accuracy 5 mm/m (0.06 in/ft), intended for double-sided PVC blackout banners
	Double-sided backlit (optional)	Registration accuracy of 2 mm (0.08 in), <sup>16</sup> intended for double-sided backlit outdoor advertising applications
<b>Dimensions (w x d x h)</b>	Printer: 598 x 172 x 187 cm (235 x 68 x 74 in) Shipping: 586 x 193 x 216 cm (231 x 76 x 85 in)	
<b>Weight</b>	Printer: 1880 kg (4140 lb); Shipping: 2640 kg (5820 lb)	
<b>What's in the box</b>	HP Latex 3600 Printer, HP 881 Latex Printheads, HP 881 Latex Cleaning Roll, 126-in spindles (x2), HP Latex 3600 Dual Roll Split Spindles (x4), HP Latex dual roll center support and docking plate, HP Internal Print Server, HP webcam, documentation software, user manual, media edge holders (x4), in-line slitters (x4), Original HP sample media, media savers (x2), cleaning supplies, spindle supports (x2), pneumatic gun	
<b>Environmental ranges</b>	Standard operating conditions: Temperature: 15 to 30°C (59 to 86°F) Humidity: 20 to 70% RH (non-condensing) Optimal IQ operating conditions: Temperature: 20 to 25°C (68 to 77°F) Humidity: 30 to 60% RH (non-condensing)	
<b>Power consumption</b>	10 kW (typical) - Indoor High Quality mode (6-pass) 11 kW (typical) - Outdoor mode (3-pass)	
<b>Certification</b>	Safety	IEC 60950-1+A1+A2 compliant; United States and Canada (CSA listed); EU (LVD and MD compliant, EN60950-1, EN12100-1, EN ISO13849-1, EN60204-1, and EN10101-1); Russia, Belarus and Kazakhstan (EAC); Australia, New Zealand (RCM)
	Electromagnetic	Compliant with Class A requirements, including USA (FCC rules), Canada (ICES), EU (EMC Directive), Australia (ACMA), New Zealand (RSM), Korea (KCC)
	Environmental	WEEE, EU RoHS, China RoHS, REACH, CE marking compliant
<b>Warranty</b>	One-year limited hardware warranty	



## Ordering information

<b>Product</b>	1HA07A	HP Latex 3600 Printer
<b>Accessories</b>	L5E74B	HP Scitex Caldera Grand RIP v11 Software
	D9Z41A	HP Scitex Onyx Thrive 211 RIP Software
	M2J33A	HP Latex In-line Slitters
	CZ065A	HP Latex 3000 Ink Collector Kit
	J8J14A	HP Latex 3000 Double-sided Day Night Kit
	Z3R55A	HP Latex 3000 Day Night Edge Holder Kit
	Z3R56A	HP Latex 3000 Day Night Protector Media
	F1V49A	HP Latex 3000 Ink Collector Foams Kit
	1ML40A	HP Latex 3000 Edge Holder Kit
	CZ059A	HP Latex 126-in Carbon Fiber Spindle
L2E28A	HP Latex Dual Roll Split Spindles	
T4E58A	HP Latex Media Saver Kit	
<b>Original HP printheads</b>	CR327A	HP 881 Yellow/Magenta Latex Printhead
	CR328A	HP 881 Cyan/Black Latex Printhead
	CR329A	HP 881 Light Magenta/Light Cyan Latex Printhead
	CR330A	HP 881 Latex Optimizer Printhead
<b>Original HP ink cartridges and maintenance supplies</b>	GOY72A	HP & 3M™ 891 10-liter Cyan Latex Ink Cartridge
	GOY73A	HP & 3M™ 891 10-liter Magenta Latex Ink Cartridge
	GOY74A	HP & 3M™ 891 10-liter Yellow Latex Ink Cartridge
	GOY75A	HP & 3M™ 891 10-liter Black Latex Ink Cartridge
	GOY76A	HP & 3M™ 891 10-liter Light Cyan Latex Ink Cartridge
	GOY77A	HP & 3M™ 891 10-liter Light Magenta Latex Ink Cartridge
	GOY78A	HP & 3M™ 891 10-liter Latex Optimizer Ink Cartridge
	CR339B	HP 881 Latex Cleaning Roll
	<b>Original HP large format printing materials</b>	HP printing materials are designed together with HP Latex Inks and HP Latex printers to provide optimal image quality, consistency, and reliability. HP Permanent Gloss Adhesive Vinyl REACH <sup>17</sup> HP Backlit Polyester Film <sup>18</sup> HP PVC-free Durable Smooth Wall Paper REACH, <sup>17</sup> FSC® certified, <sup>19</sup> UL GREENGUARD GOLD Certified <sup>20</sup> HP Premium Poster Paper <sup>18</sup> FSC® certified <sup>19</sup> For the entire HP Large Format Printing Materials portfolio, please see <a href="http://HPLFMedia.com">HPLFMedia.com</a> .
<b>Service kits</b>	1UH14A/ 1HA07-67006	HP Latex 3000 Standard Uptime Kit
	2CA94A/ 1HA07-67041	HP Latex 3000 Expert Uptime Kit
	1VT19A/ 1HA07-67008	HP Latex 3000 Maintenance Kit
	1HA07-67012	HP Latex 3000 Service Maintenance Kit
	1HA07-67013	HP Latex 3000 Textile Service Maintenance Kit
	CZ056-67390	HP Latex 3000 Cleaning Kit
<b>Service contracts</b>	HP Full Hardware Support Contract with Preventive Maintenance and Proactive Monitoring	

<sup>15</sup> The color variation inside a printed job, when printed with tiling optimized media, has been measured to be with maximum color difference ≤ 1 dE2000 (95% of colors) in "Optimize for tiling" mode when tested on Ahlstrom 5087 wallpaper with stable printing condition within a stable media and a nominal printer. Reflective measurements on a 943 color target under CIE standard illuminant D50, and according to the standard CIEDE2000 as per CIE Draft Standard DS 014-6/E:2012. 5% of colors may experience variations above the specs mentioned. Backlit substrates measured in transmission mode may yield different results.

<sup>16</sup> Printing double-sided backlit applications requires the optional HP Latex 3000 Double-sided Day Night Kit. Front-to-back image registration accuracy of 2 mm or better when using certified PVC banner and paper media, see [hp.com/go/mediasolutionslocator](http://hp.com/go/mediasolutionslocator).

<sup>17</sup> This product does not contain substances listed as SVHC (155) per Annex XIV of the EU REACH directive published as of June 16, 2014 in concentrations exceeding 0.1%. To determine the status of SVHC in HP products, see the HP REACH Declaration published at HP Printing Products and Consumable Supplies.

<sup>18</sup> HP Large Format Media take-back program availability varies. Some recyclable HP papers can be recycled through commonly available recycling programs. Recycling programs may not exist in your area. See [HPLFMedia.com/hp/ecosolutions](http://HPLFMedia.com/hp/ecosolutions) for details.

<sup>19</sup> BMG trademark license code FSC®-C115319, see [fsc.org](http://fsc.org). HP trademark license code FSC®-C017543, see [fsc.org](http://fsc.org). Not all FSC®-certified products are available in all regions.

<sup>20</sup> UL GREENGUARD GOLD Certification to UL 2818 demonstrates that products are certified to UL's GREENGUARD standards for low chemical emissions into indoor air during product usage. For more information, visit [ul.com/gg](http://ul.com/gg) or [greenguard.org](http://greenguard.org).

