

Brief

Streamline your print environment campus-wide

HP and Pharos Uniprint/iMFP solution



What if you could...

- Optimize and manage printing environments across campus, then track the results and measure your institution's savings?
- Ensure only authorized students, staff, and faculty can print and copy, using their ID cards and your institution's existing online-transaction systems?
- Track printing activity to specific users and departments to capture and pinpoint expenses, and identify underused and misused devices?
- Communicate to users how much each print job will cost, giving them the information they need to make responsible printing decisions?

The challenge

Students and educators rely on easily accessible printing and copying resources to succeed in the classroom. But managing seamless printing environments across an educational institution can be challenging for information technology (IT) staff and administrators. With strained budgets and limited resources, your institution needs a secure solution that meets the high-volume printing demands of students and faculty, while also helping your organization reduce waste, control costs, and meet its environmental goals.

Solution overview

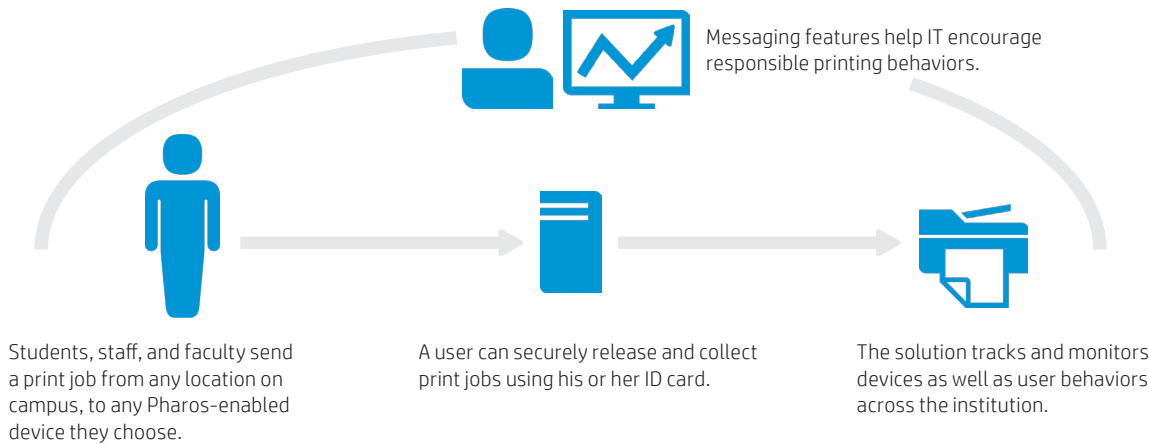
HP and Pharos Uniprint/iMFP is an intuitive solution that helps educational institutions manage print and copy devices, monitor security, and track student and faculty usage in order to improve and expand their range of services and capabilities. The system uses integrated ID card devices and password authentication to track prints and copies, allowing schools to charge jobs directly to user accounts—whether they're sent from a dorm room, computer lab, or library. Color

printing controls and secure pull printing further reduce costs and minimize waste, while messaging features help IT administrators encourage responsible printing behaviors.

Benefits and features

Monitor behaviors and assign charges with ease

- Streamline your institution's printing environments by tracking how students and educators use existing devices—including which types of equipment, the content they're printing, and at what times.
- Help foster accountability by allocating charges to specific users and departments with ID card devices and password-authentication technology that works with existing online-transaction systems, including Blackboard, CBORD (Diebold), and Heartland Payment Systems.
- Recoup printing and copying expenses for both private and publicly sponsored projects with Uniprint's third-party charging application. The solution allows students, faculty, administration, and staff to assign incurred print/copy charges to a specific budget center, contract, or grant.



HP at work

Pace University, a private university in New York City and Westchester County, NY, recognized that its printer infrastructure required upgrading. Students demanded access to printers in a way that was fair, environmentally responsible, and cost-effective. Printers were aging, and print queues frequently overloaded and crashed. There was no convenient way for the university to match students to their print jobs or easily charge them for the output. The HP and Pharos Uniprint/iMFP solution delivered state-of-the-art functionality that helped reduce paper waste by 100,000 sheets per semester, and the number of printed pages by 50%. Now, 97% of students stay within their print job allotment, and the university was able to repurpose \$80,000 USD of labor costs per semester.

Expand services, while minimizing costs and environmental impact

- Reduce waste from uncollected print and copy jobs, with a solution that allows students, staff, and faculty to release and retrieve only the jobs they want, and then deletes the rest.¹
- Update and strategically configure devices, based on what you learn from Uniprint/iMFP's analysis capabilities.
- Expand your institution's range of services and capabilities with more flexible printing options. As HP ePrint Enterprise mobile printing users, students, staff, and faculty can conveniently and securely send and collect print jobs between any two points on campus from a Uniprint Secure Print Queue.²
- Further control costs by limiting access to color printing rights based on job, device, and user attributes.

Get started

Contact your local HP representative to:

- Set up a workshop with HP to assess your specific business needs
- Establish a plan to implement the best solution for today and into the future
- Identify an environmental approach that can help your company save money

Learn more at hp.com/go/gsc

¹ A study by HP found that 30% of jobs sent to a secure queue are deleted before ever being printed.

² HP ePrint Enterprise requires HP ePrint Enterprise server software. App-based option requires Internet- and email-capable BlackBerry® smartphone OS 4.5 or newer; Apple® iPhone® 3G or newer; iPad® and iPod® touch (2nd gen) devices running iOS 4.2 or later; or Android™ devices running version 2.1, 2.2, or 2.3, with separately purchased wireless Internet service and the HP ePrint service app. Email-based option requires any email-capable device and authorized email address. Solution works with PCL5/6, PCL3, and PCL3GUI printers (HP and non-HP).

HP three-part approach

HP and our partners work with you to assess, deploy, and manage an imaging and printing environment tailored to meet your business needs, while helping you reduce costs, conserve resources, and simplify document-intensive processes.

Optimize infrastructure

We can help you achieve a balance between your total cost of printing and your needs for user convenience and productivity.

Manage environment


Working together, we can help you maintain your optimized infrastructure while improving business efficiency and tightening security.

Improve workflow

By streamlining your document-intensive processes, we can help you deliver a more efficient environment for capturing, managing, and sharing information.

Sign up for updates
hp.com/go/getupdated

   
Share with colleagues


Rate this document

