



HP EliteDesk 800 65W G4 Desktop Mini PC

Deploy a PC built for the enterprise. The HP EliteDesk 800 Desktop Mini has performance, reliability, and expandability for today's workforce in a stylish and versatile design.



HP recommends Windows 10 Pro.

- Windows 10 Pro¹
- HP Sure Start Gen4²

Streamlined for a clean workspace

- Take your footprint down to near zero with a PC that mounts behind and is powered by an HP EliteDisplay.³ Place it almost anywhere with HP Desktop Mini accessories.⁴ Reduce connection clutter with a single short USB-C™ cable⁵ and rear I/O ports.

Deceptively small, disarmingly powerful

- Experience ultra-fast data transfers with an optional Thunderbolt™ card^{6,8} on a high-performance business desktop with a 65W 8th Gen Intel® Core™ processor.⁶ Expand even more with options like Intel® Optane™ memory⁹ or an M.2 SSD PCIe Drive.⁴

Enhanced data and device security

- Get a highly secure PC with the self-healing protection of HP Sure Start Gen4.² Integrate into the most secure network infrastructures with an optional fiber network adapter.⁴ Store and lock your Mini and power cord in the optional HP Lock Box.⁴

Expansion that extends your investment

- Maximize PC life as your business needs change with an optional⁴ serial port for legacy devices; VGA, HDMI, Display Port™ or USB-C™ DisplayPort™ Alt-Mode for displays or Thunderbolt™ for fast connections.

Featuring

- Be productive in any situation with Windows 10 Pro and powerful security, collaboration, and connectivity features from HP.
- Customize your HP Elite Desktop Mini solution with a range of exclusive accessories designed to simplify mounting and security, add HDD and optical storage, and expand your I/O connections.
- Enhance collaboration with the optional HP UC Speaker Phone, Intel® Unite™ or the HP Conferencing Keyboard and HP UC Wireless Duo Headset that work with Skype for Business®.
- Protect your PC with the hardware-enforced self-healing protection of HP Sure Start Gen4 that automatically recovers the BIOS.
- Quickly and securely restore PCs to the latest image using a network connection with HP Sure Recover.
- Keep your critical applications and processes running even if malware tries to shut them down with the self-healing protection of HP Sure Run.
- Help protect your PC from websites, attachments, malware, ransomware, and viruses with hardware-enforced security from HP Sure Click.
- The HP Manageability Integration Kit helps speed up image creation and management of hardware, BIOS, and security through Microsoft System Center Configuration Manager
- Keep data out of reach and defend against theft, attacks, and unauthorized users with HP Client Security Manager Gen4.
- ITDMs can quickly help create, improve, and secure custom Windows images with HP Image Assistant Gen3.
- Rest easy with a PC that goes the distance and is designed to pass HP Total Test Process and MIL-STD 810G testing.

HP EliteDesk 800 65W G4 Desktop Mini PC Specifications Table

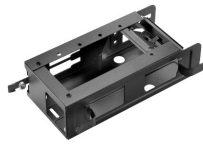


Form Factor	Mini
Available Operating System	Windows 10 Pro 64 – HP recommends Windows 10 Pro. ¹ Windows 10 Pro 64 (National Academic only) ² Windows 10 Home 64 ¹ Windows 10 Home Single Language 64 ¹ FreeDOS 2.0
Processor Family ^{16,17}	8th Generation Intel® Core™ i7 + processor (Core™ i7 and Intel® Optane™ memory); 8th Generation Intel® Core™ i5 + processor (Core™ i5 and Intel® Optane™ memory); 8th Generation Intel® Core™ i3 processor (i3-8100, i3-8100T, i3-8300, i3-8300T); Intel® Pentium® processor (G5400, G5400T, G5500, G5500T, G5600 are Windows 10 only); Intel® Celeron® processor (G4900, G4900T are Windows 10 only); 8th Generation Intel® Core™ i7 processor (i7-8700, i7-8700T, i7-8700K); 8th Generation Intel® Core™ i5 processor (i5-8500, i5-8500T, i5-8600, i5-8600T, i5-8600K)
Available Processors ³	Intel® Core™ i7-8700 with Intel® UHD Graphics 630 (3.2 GHz base frequency, up to 4.6 GHz with Intel® Turbo Boost Technology, 12 MB cache, 6 cores); Intel® Core™ i3-8100 with Intel® UHD Graphics 630 (3.6 GHz, 6 MB cache, 4 cores); Intel® Celeron® G4900 with Intel® UHD Graphics 610 (3.1 GHz, 2 MB cache, 2 cores); Intel® Core™ i7-8700K with Intel® UHD Graphics 630 (3.7 GHz base frequency, up to 4.7 GHz with Intel® Turbo Boost Technology, 12 MB cache, 6 cores); Intel® Core™ i5-8600K with Intel® UHD Graphics 630 (3.6 GHz base frequency, up to 4.3 GHz with Intel® Turbo Boost Technology, 9 MB cache, 6 cores); Intel® Core™ i5-8500 with Intel® UHD Graphics 630 (3 GHz base frequency, up to 4.1 GHz with Intel® Turbo Boost Technology, 9 MB cache, 6 cores); Intel® Pentium® Gold G5400 with Intel® UHD Graphics 610 (3.7 GHz, 4 MB cache, 2 cores); Intel® Core™ i7+ 8700 (3.2 GHz base frequency, up to 4.6 GHz with Intel® Turbo Boost Technology, 12 MB cache, 6 cores); Intel® Core™ i7-8700T with Intel® UHD Graphics 630 (2.4 GHz base frequency, up to 4 GHz with Intel® Turbo Boost Technology, 12 MB cache, 6 cores); Intel® Core™ i7+ 8700T (2.4 GHz base frequency, up to 4 GHz with Intel® Turbo Boost Technology, 12 MB cache, 6 cores); Intel® Core™ i5-8600 with Intel® UHD Graphics 630 (3.1 GHz base frequency, up to 4.3 GHz with Intel® Turbo Boost Technology, 9 MB cache, 6 cores); Intel® Core™ i5+ 8600 (3.1 GHz base frequency, up to 4.3 GHz with Intel® Turbo Boost Technology, 9 MB cache, 6 cores); Intel® Core™ i5-8600T (2.3 GHz base frequency, up to 3.7 GHz with Intel® Turbo Boost Technology, 9 MB cache, 6 cores); Intel® Core™ i5+ 8500 (3 GHz base frequency, up to 4.1 GHz with Intel® Turbo Boost Technology, 9 MB cache, 6 cores); Intel® Core™ i5-8500T (2.1 GHz base frequency, up to 3.5 GHz with Intel® Turbo Boost Technology, 9 MB cache, 6 cores); Intel® Core™ i3-8300 with Intel® UHD Graphics 630 (3.7 GHz, 8 MB cache, 4 cores); Intel® Core™ i3-8300T with Intel® UHD Graphics 630 (3.2 GHz, 8 MB cache, 4 cores); Intel® Core™ i3-8100T with Intel® UHD Graphics 630 (3.1 GHz, 6 MB cache, 4 cores); Intel® Pentium® Gold G5600 with Intel® UHD Graphics 630 (3.9 GHz, 4 MB cache, 2 cores); Intel® Pentium® Gold G5500T with Intel® UHD Graphics 630 (3.2 GHz, 4 MB cache, 2 cores); Intel® Pentium® Gold G5400T with Intel® UHD Graphics 610 (3.1 GHz, 4 MB cache, 2 cores); Intel® Celeron® G4900T with Intel® UHD Graphics 610 (2.9 GHz, 2 MB cache, 2 cores); Intel® Core™ i5+ 8600K (3.6 GHz base frequency, up to 4.3 GHz with Intel® Turbo Boost Technology, 9 MB cache, 6 cores); Intel® Core™ i7+ 8700K (3.7 GHz base frequency, up to 4.7 GHz with Intel® Turbo Boost Technology, 12 MB cache, 6 cores); Intel® Pentium® Gold G5500 with Intel® UHD Graphics 630 (3.8 GHz, 4 MB cache, 2 cores)
Chipset	Intel® Q370
Maximum Memory	32 GB DDR4-2666 SDRAM ^{4,13} Transfer rates up to 2666 MT/s.
Memory Slots	2 SODIMM
Internal Storage	500 GB up to 1 TB 7200 rpm SATA ⁵ up to 2 TB 5400 rpm SATA ⁵ up to 500 GB SATA SED Opal 2 HDD ⁵ up to 500 GB 7200 rpm SATA FIPS SED ⁵ 500 GB up to 2 TB 5400 rpm SATA SSHD ⁵ 256 GB up to 512 GB SATA SED Opal 2 TLC SSD ⁵ 256 GB up to 512 GB SATA FIPS SSD ⁵ 128 GB up to 512 GB PCIe® NVMe™ M.2 SSD ⁵ 128 GB up to 1 TB PCIe® NVMe™ TLC M.2 SSD ⁵ 256 GB up to 512 GB PCIe® NVMe™ SED Opal 2 TLC M.2 SSD ⁵ 128 GB up to 512 GB SATA SSD ⁵
Available Graphics	Integrated: Intel® UHD Graphics 630; Intel® UHD Graphics 610
Audio	Conexant CX20632 codec, universal audio jack and headphone front ports (3.5 mm), multi-streaming capable
Expansion Slots	1 M.2 2230; 2 M.2 2230/2280; 2 PCIe 3 x1 (1 M.2 slot for WLAN and 2 M.2 2230/2280 slot for storage.)
Ports and Connectors	Rear: 1 external antenna connector; 1 power connector; 1 RJ-45; 2 DisplayPort™ 1.2; 2 USB 3.1 Gen 1; 2 USB 3.1 Gen 2 ⁶ Front: 1 headphone; 1 headset connector; 1 USB 3.1 Gen 1 (charging); 1 USB 3.1 Gen 2; 1 USB 3.1 Type-C™ Gen 2 Optional: 1 DisplayPort™ 1.2; 1 HDMI 2.0; 1 serial; 1 USB 3.1 Type-C™ Gen 1 (DisplayPort™); 1 USB 3.1 Type-C™ Gen 2 (with Thunderbolt™); 1 VGA
Input Devices	HP Conferencing Keyboard; HP USB Business Slim Keyboard; HP USB Keyboard; HP Wireless Business Slim Keyboard and Mouse Combo; HP Wireless Collaboration Keyboard ¹⁴ HP USB 1000 dpi Laser Mouse; HP USB Optical Mouse; HP USB Premium Mouse ⁸
Communications	LAN: Integrated Intel® I219LM GbE LOM WLAN: Intel® Dual Band Wireless-AC 9560 802.11ac (2x2) and Bluetooth® 5 M.2, non-vPro™; Intel® Dual Band Wireless-AC 9560 802.11ac (2x2) and Bluetooth® 5 M.2, vPro™ ⁷
Drive Bays	One 2.5" HDD ³³
Available Software	Absolute Persistence module; HP ePrint Driver + JetAdvantage; HP Hotkey Support; HP Jumpstart; HP Noise Cancellation Software; HP PhoneWise; HP Support Assistant; HP Sure Click; HP Velocity; Native Miracast Support; HP Wireless Wakeup; Buy Office (sold separately); HP WorkWise; HP Sure Recover ^{9,18,19,20,21,22}
Security Management	DriveLock; Hood sensor; HP BIOSphere; HP Password Manager; HP Power On Authentication; Intel® Identity Protection Technology (Intel® IPT); Power-on password (via BIOS); RAID configurations; Removable media write/boot control; SATA port disablement (via BIOS); Setup password (via BIOS); Support for chassis padlocks and cable lock devices; USB enable/disable (via BIOS); HP Client Security Suite Gen 4; HP Sure Start Gen 4; HP Sure Run; Parallel enable/disable (via BIOS); Serial enable/disable (via BIOS); Trusted Platform Module TPM 2.0 Embedded Security Chip shipped with Windows 10 (Common Criteria EAL4+ Certified)/FIPS 140-2 Level 2 Certified ^{11,25,26,27,28,29,30,31,32}
Management Features	HP BIOS Config Utility (download); HP Client Catalog (download); HP Driver Packs (download); HP System Software Manager (download); Intel® vPro™ Technology; Ivanti Management Suite; HP Management Integration Kit for Microsoft System Center Configuration Management Gen 2 ^{10,23,24}
Power	90 W external power adapter; up to 89% efficiency, active PFC
Dimensions	17.7 x 17.5 x 3.4 cm
Weight	1.05 kg (Exact weight depends on configuration.)
Environmental	Low halogen ¹⁵
Energy Efficiency Compliance	ENERGY STAR® certified; EPEAT® Gold ¹²

HP EliteDesk 800 65W G4 Desktop Mini PC

Recommended Accessories and Services

HP DM VESA Power Supply Holder Kit



Simplify cable management when mounting your HP Desktop Mini with the HP DM VESA Power Supply Holder Kit, which attaches to your HP Desktop Mini Security/Dual VESA Sleeve v2 (2JA32AA) to reduce cable clutter from the PC's power supply cable and brick.

Product number: 1RL87AA

HP B300 PC Mounting Bracket



Customize an altogether better solution with the HP B300 PC Mounting Bracket, which lets you attach your HP Workstation, HP Desktop Mini, HP Chromebox or select HP Thin Client directly behind select 2017 and 2018 HP EliteDisplays and HP Z Displays.¹

Product number: 2DW53AA

HP Desktop Mini Security/Dual VESA Sleeve v2



Wrap your HP Desktop Mini PC in the HP Desktop Mini Security/Dual VESA Sleeve v2 to securely mount it—with or without an Expansion Module¹—behind your display, position the solution on a wall, and lock it down with the integrated security bracket and optional HP Ultra-Slim Cable Lock.

Product number: 2JA32AA

HP Wireless Slim Business Keyboard



Enjoy easy data entry and wireless connectivity with the HP Wireless Business Slim Keyboard, designed to complement the 2015 class of HP Business PCs.

Product number: N3R88AA

HP Master Keyed Cable Lock 10mm



Help keep your notebook safe in the office and high-traffic areas by tethering it to a secure surface with the HP Master Keyed Cable Lock 10mm, designed specifically for ultra-thin profile notebooks.

Product number: T1A63AA

HP 3-year Next Business Day Onsite Optional Customer Self Repair Desktop/Workstation Only Hardware Service



Receive 3 years of next business day onsite repair from an HP-qualified technician for your computing device, if the issue cannot be solved remotely. For more information on Care Pack services, please visit www.hp.com/go/cpc.

Product number: UE379E

Messaging Footnotes

- ¹ Not all features are available in all editions or versions of Windows. Systems may require upgraded and/or separately purchased hardware, drivers, software or BIOS update to take full advantage of Windows functionality. Windows 10 is automatically updated, which is always enabled. ISP fees may apply and additional requirements may apply over time for updates. See <http://www.windows.com>.
- ² HP Sure Start Gen4 is available on HP Elite and HP Pro 600 products equipped with 8th generation Intel® or AMD processors.
- ³ Display sold separately. Requires HP B300 or B500 PC Mounting Bracket for Monitors, sold separately. See display QuickSpecs for bracket guidance.
- ⁴ Sold separately or as an optional feature.
- ⁵ Short USB-C™ cable included with PC configured with optional USB-C™ DisplayPort™ Alt-Mode w/Power Delivery port or USB-C™ DisplayPort™ Alt-Mode only port.
- ⁶ Multi-Core is designed to improve performance of certain software products. Not all customers or software applications will necessarily benefit from use of this technology. Performance and clock frequency will vary depending on application workload and your hardware and software configurations. Intel's numbering, branding and/or naming is not a measurement of higher performance.
- ⁷ If Thunderbolt™ card is configured, no other optional I/O may be selected.
- ⁸ Intel® Optane™ memory system acceleration does not replace or increase the DRAM in your system and requires configuration with an optional Intel® Core™ (i5 or 7)+ processor.
- ⁹ HP Sure Recover is available on HP Elite PCs with 8th generation Intel® or AMD processors and requires an open, wired network connection. Not available on platforms with multiple internal storage drives or Intel® Optane™. You must back up important files, data, photos, videos, etc. before using HP Sure Recover to avoid loss of data.

Technical Specifications Footnotes

- ¹ Not all features are available in all editions or versions of Windows. Systems may require upgraded and/or separately purchased hardware, drivers, software or BIOS update to take full advantage of Windows functionality. Windows 10 is automatically updated, which is always enabled. ISP fees may apply and additional requirements may apply over time for updates. See <http://www.windows.com/>.
- ² Some devices for academic use will automatically be updated to Windows 10 Pro Education with the Windows 10 Anniversary Update. Features vary; see <https://aka.ms/ProEducation> for Windows 10 Pro Education feature information.
- ³ Multi-core is designed to improve performance of certain software products. Not all customers or software applications will necessarily benefit from use of this technology. Performance and clock frequency will vary depending on application workload and your hardware and software configurations. Intel's numbering, branding and/or naming is not a measurement of higher performance.
- ⁴ For systems configured with more than 3 GB of memory and a 32-bit operating system, all memory may not be available due to system resource requirements. Addressing memory above 4 GB requires a 64-bit operating system. Memory modules support data transfer rates up to 2133 MT/s; actual data rate is determined by the system's configured processor. See processor specifications for supported memory data rate. All memory slots are customer accessible / upgradeable.
- ⁵ For hard drives and solid state drives, GB = 1 billion bytes. TB = 1 trillion bytes. Actual formatted capacity is less. Up to 16 GB (for Windows 7) and 36 GB (for Windows 8.1/10) of system disk is reserved for the system recovery software.
- ⁶ (Z) USB 3.1 Gen 1 (5 Gbit/s): allows for wake from S4/S5 with keyboard/mouse when connected and enabled in BIOS.
- ⁷ Wireless access point and internet service required. The specifications for the 802.11ac WLAN are draft specifications and are not final. If the final specifications differ from the draft specifications, it may affect the ability of the notebook to communicate with other 802.11ac WLAN devices.
- ⁸ Antimicrobial USB Mouse and HP USB Hardened Mouse are not available in all regions.
- ⁹ Miracast is a wireless technology your PC can use to project your screen to TVs, projectors, and streaming.
- ¹⁰ HP Driver Packs: Not preinstalled, however available for download at <http://www.hp.com/go/clientmanagement>
- ¹¹ HP BIOSphere Gen4: Requires Intel® or AMD 8th Gen processors. Features may vary depending on the platform and configurations.
- ¹² EPEAT® registered where applicable. EPEAT registration varies by country. See www.epeat.net for registration status by country. See HP's 3rd party option store for solar energy accessory www.hp.com/go/options.
- ¹³ All memory slots are customer accessible / upgradeable.
- ¹⁴ HP USB and PS/2 Washable Keyboard: PS/2 port not available on EliteOne 800 G4 AiOs.
- ¹⁵ External power supplies, power cords, cables and peripherals are not Low Halogen. Service parts obtained after purchase may not be Low Halogen.
- ¹⁶ Your product does not support Windows 8 or Windows 7, in accordance with Microsoft's support policy, HP does not support the Windows 8 or Windows 7 operating system on products configured with Intel® 8th generation and forward processors or provide any Windows 8 or Windows 7 drivers on <http://www.support.hp.com>
- ¹⁷ Intel® Optane™ memory (cache) is sold separately. Intel® Optane™ memory system acceleration does not replace or increase the DRAM in your system. Available for HP commercial desktops and notebooks and for select HP workstations (HP Z240 Tower/SFF, Z2 Mini, ZBook Studio, 15 and 17 G5) and requires a SATA HDD, 7th Gen or higher Intel® Core™ processor or Intel® Xeon® processor E3-1200 V6 product family or higher, BIOS version with Intel® Optane™ supported, Windows 10 version 1703 or higher, M.2 type 2280-S1-B-M connector on a PCH Remapped PCIe Controller and Lanes in a x2 or x4 configuration with B-M keys that meet NVMe™ Spec 1.1, and an Intel® Rapid Storage Technology (Intel® RST) 15.5 driver.
- ¹⁸ Absolute Persistence Module: Absolute agent is shipped turned off, and will be activated when customers activate a purchased subscription. Subscriptions can be purchased for terms ranging multiple years. Service is limited, check with Absolute for availability outside the U.S. The Absolute Recovery Guarantee is a limited warranty. Certain conditions apply. For full details visit: <http://www.absolute.com/company/legal/agreements/computrace-agreement>. Data Delete is an optional service provided by Absolute Software. If utilized, the Recovery Guarantee is null and void. In order to use the Data Delete service, customers must first sign a Pre-Authorization Agreement and either obtain a PIN or purchase one or more RSA SecurID tokens from Absolute Software.
- ¹⁹ HP ePrint Driver: Requires an Internet connection to HP web-enabled printer and HP ePrint account registration (for a list of eligible printers, supported documents and image types and other HP ePrint details, see www.hp.com/go/eprintcenter). Print times and connection speeds may vary.
- ²⁰ HP Support Assistant: Requires Windows and Internet access.
- ²¹ HP WorkWise: Smartphone app is available as a free download on Google Play.
- ²² HP Sure Recover: Is available on HP Elite PCs with 8th generation Intel® or AMD processors and requires an open, wired network connection. You must back up important files, data, photos, videos, etc. before using HP Sure Recover to avoid loss of data.
- ²³ HP Manageability Integration Kit: Can be downloaded from <http://www8.hp.com/us/en/ads/clientmanagement/overview.html>
- ²⁴ Ivanti Management Suite: Subscription required.
- ²⁵ HP Client Security Suite Gen 4: Requires Windows and Intel® or AMD 8th generation processors.
- ²⁶ HP Password Manager: Requires Internet Explorer or Chrome or Firefox. Some websites and applications may not be supported. User may need to enable or allow the add-on / extension in the internet browser.
- ²⁷ Microsoft Defender: Opt in and internet connection required for updates.
- ²⁸ HP Sure Start Gen4: Is available on HP EliteBook products equipped with Intel® 8th generation processors.
- ²⁹ Firmware TPM: Is version 2.0. Hardware TPM is v1.2, which is a subset of the TPM 2.0 specification version v0.89 as implemented by Intel Platform Trust Technology (PTT).
- ³⁰ RAID configuration: Is optional and does require a second hard drive.
- ³¹ HP Sure Run: Is available on HP Elite products equipped with 8th generation Intel® or AMD processors.
- ³² Intel® Identity Protection Technology (Intel® IPT): Models configured with Intel® Core™ processors have the ability to utilize advanced security protection for online transactions. Intel® Identity Protection Technology (Intel® IPT), used in conjunction with participating web sites, provides double identity authentication by adding a hardware component in addition to the usual user name and password. Intel® Identity Protection Technology (Intel® IPT) is initialized through an HP Client Security module.
- ³³ Sold Separately or as an optional feature.

Sign up for updates

hp.com/go/getupdated

© Copyright 2018 HP Development Company, L.P. The information contained herein is subject to change without notice. The only warranties for HP products and services are set forth in the express warranty statements accompanying such products and services. Nothing herein should be construed as constituting an additional warranty. HP shall not be liable for technical or editorial errors or omissions contained herein.

Microsoft, Windows, Skype, and the Windows Logo are trademarks or registered trademarks of Microsoft Corporation in the U.S. and other countries. Intel, the Intel logo, Intel Core, Thunderbolt, and Core Inside are trademarks or registered trademarks of Intel Corporation or its subsidiaries in the United States and other countries. USB Type-C™ and USB-C™ are trademarks of USB Implementers Forum. Adobe PDF is a trademark of Adobe Systems Incorporated. DisplayPort™ and the DisplayPort™ logo are trademarks owned by the Video Electronics Standards Association (VESA®) in the United States and other countries. AMD and Radeon are trademarks of Advanced Micro Devices, Inc. ENERGY STAR is a registered trademark owned by the U.S. Environmental Protection Agency.

