



# HP EliteDesk 800 95W G4 Desktop Mini PC

Deploy a PC built for the enterprise with 8th Gen Intel® Core™ processors.<sup>3</sup> The HP EliteDesk 800 Desktop Mini has performance, reliability, and expandability for today's workforce in a stylish and versatile design.



HP recommends Windows 10 Pro.

- Windows 10 Pro<sup>1</sup>
- HP Sure Start Gen4<sup>2</sup>

## Streamlined for a clean workspace

- Take your footprint down to near zero with a PC that mounts behind and is powered by an HP EliteDisplay.<sup>4,5</sup> Place it almost anywhere with HP Desktop Mini accessories.<sup>4</sup> Reduce connection clutter with a single short USB-C™ cable<sup>6</sup> and rear I/O ports.

## Meet the mighty Mini

- Create panoramic views of static and dynamic imagery on up to 7 daisy-chained displays<sup>7</sup> from one PC. Transfer data fast with an optional Thunderbolt™ card.<sup>4,8</sup> Expand even more with options like Intel® Optane™ memory<sup>9</sup> or an M.2 SSD PCIe Drive.<sup>4,10</sup>

## Enhanced data and device security

- Get a highly secure PC with the self-healing protection of HP Sure Start Gen4.<sup>2</sup> Integrate into the most secure network infrastructures with an optional fiber network adapter.<sup>4</sup> Store and lock your Mini and power cord in the optional HP Lock Box.<sup>4</sup>

## Expansion that extends your investment

- Maximize PC life as your business needs change with an optional<sup>4</sup> serial port for legacy devices; VGA, HDMI, Display Port™ or USB-C™ DisplayPort™ Alt-Mode for displays; USB-C™ Power<sup>11</sup> to draw power or Thunderbolt™<sup>8</sup> for fast connections.

## Featuring

- Be productive in any situation with Windows 10 Pro and powerful security, collaboration, and connectivity features from HP.
- Customize your HP Elite Desktop Mini solution with a range of exclusive accessories designed to simplify display, wall, and rack mounting.
- Enhance collaboration with the optional HP UC Speaker Phone, Intel® Unite™ or the HP Conferencing Keyboard and HP UC Wireless Duo Headset that work with Skype for Business®.
- Protect your PC with the hardware-enforced self-healing protection of HP Sure Start Gen4 that automatically recovers the BIOS.
- Quickly and securely restore PCs to the latest image using a network connection with HP Sure Recover.
- Keep your critical applications and processes running even if malware tries to shut them down with the self-healing protection of HP Sure Run.
- Help protect your PC from websites, attachments, malware, ransomware, and viruses with hardware-enforced security from HP Sure Click.
- The HP Manageability Integration Kit helps speed up image creation and management of hardware, BIOS, and security through Microsoft System Center Configuration Manager
- Keep data out of reach and defend against theft, attacks, and unauthorized users with HP Client Security Manager Gen4.
- ITDMs can quickly help create, improve, and secure custom Windows images with HP Image Assistant Gen3.
- Rest easy with a PC that goes the distance and is designed to pass HP Total Test Process and MIL-STD 810G testing.

# HP EliteDesk 800 95W G4 Desktop Mini PC Specifications Table

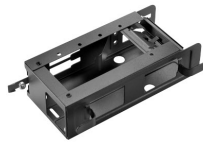


|   |   |
|---|---|
| <b>Form Factor</b>                                | Mini  |
| <b>Available Operating System</b>                 | Windows 10 Pro 64 – HP recommends Windows 10 Pro. <sup>1</sup><br>Windows 10 Pro 64 (National Academic only) <sup>2</sup><br>Windows 10 Home 64 <sup>1</sup><br>Windows 10 Home Single Language 64 <sup>1</sup><br>FreeDOS 2.0  |
| <b>Processor Family</b> <sup>16</sup>             | 8th Generation Intel® Core™ i7 + processor (Core™ i7 and Intel® Optane™ memory); 8th Generation Intel® Core™ i5 + processor (Core™ i5 and Intel® Optane™ memory); 8th Generation Intel® Core™ i5 processor (i5-8600K); 8th Generation Intel® Core™ i7 processor (i7-8700K)  |
| <b>Available Processors</b> <sup>3,33,34,35</sup> | Intel® Core™ i7 + 8700K (Core™ i7 and 16 GB Intel® Optane™ memory) (3.7 GHz base frequency, up to 4.7 GHz with Intel® Turbo Boost Technology, 12 MB cache, 6 cores); Intel® Core™ i7-8700K vPro™ processor with Intel® UHD Graphics 630 (3.7 GHz base frequency, up to 4.7 GHz with Intel® Turbo Boost Technology, 12 MB cache, 6 cores); Intel® Core™ i5-8600K vPro™ processor with Intel® UHD Graphics 630 (3.6 GHz base frequency, up to 4.3 GHz with Intel® Turbo Boost Technology, 9 MB cache, 6 cores); Intel® Core™ i5 + 8600K vPro™ processor (Core™ i5 and 16 GB Intel® Optane™ memory) with Intel® UHD Graphics 630 (3.6 GHz base frequency, up to 4.3 GHz with Intel® Turbo Boost Technology, 9 MB cache, 6 cores) |
| <b>Chipset</b>                                    | Intel® Q370   |
| <b>Maximum Memory</b>                             | 32 GB DDR4-2666 SDRAM <sup>4,13</sup><br>Transfer rates up to 2666 MT/s.  |
| <b>Memory Slots</b>                               | 2 SODIMM  |
| <b>Internal Storage</b>                           | 500 GB up to 1 TB 7200 rpm SATA <sup>5</sup><br>up to 2 TB 5400 rpm SATA <sup>5</sup><br>up to 500 GB SATA SED Opal 2 HDD <sup>5</sup><br>up to 500 GB 7200 rpm SATA FIPS SED <sup>5</sup><br>500 GB up to 2 TB 5400 rpm SATA SSHD <sup>5</sup><br>256 GB up to 512 GB SATA SED Opal 2 TLC SSD <sup>5</sup><br>256 GB up to 512 GB SATA FIPS SSD <sup>5</sup><br>128 GB up to 512 GB PCIe® NVMe™ M.2 SSD <sup>5</sup><br>128 GB up to 1 TB PCIe® NVMe™ TLC M.2 SSD <sup>5</sup><br>256 GB up to 512 GB PCIe® NVMe™ SED Opal 2 TLC M.2 SSD <sup>5</sup>  |
| <b>Available Graphics</b>                         | Integrated: Intel® UHD Graphics 630; Intel® UHD Graphics 610  |
| <b>Audio</b>                                      | Conexant CX20632 codec, universal audio jack and headphone front ports (3.5 mm), multi-streaming capable  |
| <b>Expansion Slots</b>                            | 1 M.2 2230; 2 M.2 2230/2280<br>(1 M.2 slot for WLAN and 2 M.2 2230/2280 slot for storage.)  |
| <b>Ports and Connectors</b>                       | Rear: 1 external antenna connector; 1 power connector; 1 RJ-45; 2 DisplayPort™ 1.2; 2 USB 3.1 Gen 1; 2 USB 3.1 Gen 2<br>Front: 1 headphone; 1 headset connector; 1 USB 3.1 Gen 1 (charging); 1 USB 3.1 Gen 2; 1 USB 3.1 Type-C™ Gen 2<br>Optional: 1 DisplayPort™ 1.2; 1 HDMI 2.0; 1 serial; 1 USB 3.1 Type-C™ Gen 1 (DisplayPort™); 1 VGA  |
| <b>Input Devices</b>                              | HP Conferencing Keyboard; HP USB Business Slim Keyboard; HP USB Keyboard; HP Wireless Business Slim Keyboard and Mouse Combo; HP Wireless Collaboration Keyboard <sup>14</sup><br>HP USB 1000 dpi Laser Mouse; HP USB Optical Mouse; HP USB Premium Mouse <sup>8</sup>  |
| <b>Communications</b>                             | LAN: Integrated Intel® I219LM GbE LOM<br>WLAN: Intel® Dual Band Wireless-AC 9560 802.11ac (2x2) and Bluetooth® 5 M.2, non-vPro™; Intel® Dual Band Wireless-AC 9560 802.11ac (2x2) and Bluetooth® 5 M.2, vPro™ <sup>7</sup>  |
| <b>Available Software</b>                         | Absolute Persistence module; HP ePrint Driver + JetAdvantage; HP Hotkey Support; HP Jumpstart; HP Noise Cancellation Software; HP PhoneWise; HP Support Assistant; Native Miracast Support; HP Wireless Wakeup; Buy Office (sold separately); HP Sure Recover <sup>9,18,19,20,22</sup>  |
| <b>Security Management</b>                        | DriveLock; Hood sensor; HP BIOSphere; HP Password Manager; HP Power On Authentication; Intel® Identity Protection Technology (Intel® IPT); Power-on password (via BIOS); RAID configurations; Removable media write/boot control; SATA port disablement (via BIOS); Setup password (via BIOS); Support for chassis padlocks and cable lock devices; USB enable/disable (via BIOS); HP Client Security Suite Gen 4; HP Sure Start Gen 4; HP Sure Run; Parallel enable/disable (via BIOS); Serial enable/disable (via BIOS); Trusted Platform Module TPM 2.0 Embedded Security Chip shipped with Windows 10 (Common Criteria EAL4+ Certified)(FIPS 140-2 Level 2 Certified) <sup>11,25,26,27,28,29,30,31,32</sup>               |
| <b>Management Features</b>                        | HP BIOS Config Utility (download); HP Client Catalog (download); HP Driver Packs (download); HP System Software Manager (download); Intel® vPro™ Technology; Ivanti Management Suite; HP Management Integration Kit for Microsoft System Center Configuration Management Gen 2 <sup>10,23,24</sup>  |
| <b>Power</b>                                      | 150 W external power adapter, up to 89% efficiency, active PFC  |
| <b>Dimensions</b>                                 | 17.7 x 17.5 x 3.4 cm  |
| <b>Weight</b>                                     | 1.22 kg<br>(Exact weight depends on configuration.)   |
| <b>Environmental</b>                              | Low halogen <sup>15</sup>   |
| <b>Energy Efficiency Compliance</b>               | ENERGY STAR® certified; EPEAT® Gold <sup>12</sup>   |

## HP EliteDesk 800 95W G4 Desktop Mini PC

### Recommended Accessories and Services

#### HP DM VESA Power Supply Holder Kit



Simplify cable management when mounting your HP Desktop Mini with the HP DM VESA Power Supply Holder Kit, which attaches to your HP Desktop Mini Security/Dual VESA Sleeve v2 (2JA32AA) to reduce cable clutter from the PC's power supply cable and brick.

**Product number: 1RL87AA**

#### HP B300 PC Mounting Bracket



Customize an altogether better solution with the HP B300 PC Mounting Bracket, which lets you attach your HP Workstation, HP Desktop Mini, HP Chromebox or select HP Thin Client directly behind select 2017 and 2018 HP EliteDisplays and HP Z Displays.<sup>1</sup>

**Product number: 2DW53AA**

#### HP Desktop Mini Security/Dual VESA Sleeve v2



Wrap your HP Desktop Mini PC in the HP Desktop Mini Security/Dual VESA Sleeve v2 to securely mount it—with or without an Expansion Module<sup>1</sup>—behind your display, position the solution on a wall, and lock it down with the integrated security bracket and optional HP Ultra-Slim Cable Lock.

**Product number: 2JA32AA**

#### HP Wireless Slim Business Keyboard



Enjoy easy data entry and wireless connectivity with the HP Wireless Business Slim Keyboard, designed to complement the 2015 class of HP Business PCs.

**Product number: N3R88AA**

#### HP Master Keyed Cable Lock 10mm



Help keep your notebook safe in the office and high-traffic areas by tethering it to a secure surface with the HP Master Keyed Cable Lock 10mm, designed specifically for ultra-thin profile notebooks.

**Product number: T1A63AA**

#### HP 3-year Next Business Day Onsite Optional Customer Self Repair Desktop/Workstation Only Hardware Service



Receive 3 years of next business day onsite repair from an HP-qualified technician for your computing device, if the issue cannot be solved remotely. For more information on Care Pack services, please visit [www.hp.com/go/cpc](http://www.hp.com/go/cpc).

**Product number: UE379E**

## Messaging Footnotes

- <sup>1</sup> Not all features are available in all editions or versions of Windows. Systems may require upgraded and/or separately purchased hardware, drivers, software or BIOS update to take full advantage of Windows functionality. Windows 10 is automatically updated, which is always enabled. ISP fees may apply and additional requirements may apply over time for updates. See <http://www.windows.com>.
- <sup>2</sup> HP Sure Start Gen4 is available on HP Elite and HP Pro 600 products equipped with 8th generation Intel® or AMD processors.
- <sup>3</sup> Multi-Core is designed to improve performance of certain software products. Not all customers or software applications will necessarily benefit from use of this technology. Performance and clock frequency will vary depending on application workload and your hardware and software configurations. Intel's numbering, branding and/or naming is not a measurement of higher performance.
- <sup>4</sup> Sold separately or as an optional feature.
- <sup>5</sup> Power delivery only supported on model with 35W 8th Gen Intel® Core™ processor and displays with USB-C™ power delivery. Display sold separately. Mounting requires HP B300 or B500 PC Mounting Bracket for Monitors, sold separately. See display QuickSpecs for bracket guidance.
- <sup>6</sup> Short USB-C™ cable included with PC configured with optional USB-C™ DisplayPort™ Alt-Mode w/Power Delivery port or USB-C™ DisplayPort™ Alt-Mode only port.
- <sup>7</sup> Displays sold separately. Only supported on model with 35W 8th Gen Intel® Core™ processor and optional discrete AMD Radeon™ graphics. 35W processor model can be configured with an AMD Radeon™ RX560 graphics or Thunderbolt™ card; it cannot be configured with both options together.
- <sup>8</sup> Only supported on model with 35W or 65W 8th Gen Intel® Core™ processor. If Thunderbolt™ card is configured, no other optional I/O may be selected.
- <sup>9</sup> Intel® Optane™ memory system acceleration does not replace or increase the DRAM in your system and requires configuration with an optional Intel® Core™ i(5 or 7)+ processor.
- <sup>10</sup> The HP EliteDesk 800 G4 Desktop Mini supports two M.2 SSD drives. On the model with 35W 8th Gen Intel® Core™ processor, only one M.2 drive can be populated if an optional discrete graphics card is installed.

## Technical Specifications Footnotes

- <sup>1</sup> Not all features are available in all editions or versions of Windows. Systems may require upgraded and/or separately purchased hardware, drivers, software or BIOS update to take full advantage of Windows functionality. Windows 10 is automatically updated, which is always enabled. ISP fees may apply and additional requirements may apply over time for updates. See <http://www.windows.com/>.
- <sup>2</sup> Some devices for academic use will automatically be updated to Windows 10 Pro Education with the Windows 10 Anniversary Update. Features vary; see <https://aka.ms/ProEducation> for Windows 10 Pro Education feature information.
- <sup>3</sup> Multi-core is designed to improve performance of certain software products. Not all customers or software applications will necessarily benefit from use of this technology. Performance and clock frequency will vary depending on application workload and your hardware and software configurations. Intel's numbering, branding and/or naming is not a measurement of higher performance.
- <sup>4</sup> For systems configured with more than 3 GB of memory and a 32-bit operating system, all memory may not be available due to system resource requirements. Addressing memory above 4 GB requires a 64-bit operating system. Memory modules support data transfer rates up to 2133 MT/s; actual data rate is determined by the system's configured processor. See processor specifications for supported memory data rate. All memory slots are customer accessible / upgradeable.
- <sup>5</sup> For hard drives and solid state drives, GB = 1 billion bytes. TB = 1 trillion bytes. Actual formatted capacity is less. Up to 36 GB (for Windows 10) of system disk is reserved for the system recovery software.
- <sup>7</sup> Wireless access point and internet service required. The specifications for the 802.11ac WLAN are draft specifications and are not final. If the final specifications differ from the draft specifications, it may affect the ability of the notebook to communicate with other 802.11ac WLAN devices.
- <sup>8</sup> Antimicrobial USB Mouse and HP USB Hardened Mouse are not available in all regions.
- <sup>9</sup> Miracast is a wireless technology your PC can use to project your screen to TVs, projectors, and streaming.
- <sup>10</sup> HP Driver Packs: Not preinstalled, however available for download at <http://www.hp.com/go/clientmanagement>
- <sup>11</sup> HP BIOSphere Gen4: Requires Intel® or AMD 8th Gen processors. Features may vary depending on the platform and configurations.
- <sup>12</sup> EPEAT® registered where applicable. EPEAT registration varies by country. See [www.epeat.net](http://www.epeat.net) for registration status by country. See HP's 3rd party option store for solar energy accessory [www.hp.com/go/options](http://www.hp.com/go/options).
- <sup>13</sup> All memory slots are customer accessible / upgradeable.
- <sup>14</sup> HP USB and PS/2 Washable Keyboard: PS/2 port not available on EliteOne 800 G4 AiOs.
- <sup>15</sup> External power supplies, power cords, cables and peripherals are not Low Halogen. Service parts obtained after purchase may not be Low Halogen.
- <sup>16</sup> Your product does not support Windows 8 or Windows 7, in accordance with Microsoft's support policy, HP does not support the Windows 8 or Windows 7 operating system on products configured with Intel® 8th generation and forward processors or provide any Windows 8 or Windows 7 drivers on <http://www.support.hp.com>
- <sup>18</sup> Absolute Persistence Module: Absolute agent is shipped turned off, and will be activated when customers activate a purchased subscription. Subscriptions can be purchased for terms ranging multiple years. Service is limited, check with Absolute for availability outside the U.S. The Absolute Recovery Guarantee is a limited warranty. Certain conditions apply. For full details visit: <http://www.absolute.com/company/legal/agreements/computrace-agreement>. Data Delete is an optional service provided by Absolute Software. If utilized, the Recovery Guarantee is null and void. In order to use the Data Delete service, customers must first sign a Pre-Authorization Agreement and either obtain a PIN or purchase one or more RSA SecurID tokens from Absolute Software.
- <sup>19</sup> HP ePrint Driver: Requires an Internet connection to HP web-enabled printer and HP ePrint account registration (for a list of eligible printers, supported documents and image types and other HP ePrint details, see [www.hp.com/go/eprintcenter](http://www.hp.com/go/eprintcenter)). Print times and connection speeds may vary.
- <sup>20</sup> HP Support Assistant: Requires Windows and Internet access.
- <sup>22</sup> HP Sure Recover: is available on HP Elite PCs with 8th generation Intel® or AMD processors and requires an open, wired network connection. Not available on platforms with multiple internal storage drives, Intel® Optane™. You must back up important files, data, photos, videos, etc. before use to avoid loss of data.
- <sup>23</sup> HP Manageability Integration Kit: Can be downloaded from <http://www8.hp.com/us/en/ads/clientmanagement/overview.html>
- <sup>24</sup> Ivanti Management Suite: Subscription required.
- <sup>25</sup> HP Client Security Suite Gen 4: Requires Windows and Intel® or AMD 8th generation processors.
- <sup>26</sup> HP Password Manager: Requires Internet Explorer or Chrome or FireFox. Some websites and applications may not be supported. User may need to enable or allow the add-on / extension in the internet browser.
- <sup>27</sup> Microsoft Defender: Opt in and internet connection required for updates.
- <sup>28</sup> HP Sure Start Gen4: Is available on HP EliteBook products equipped with Intel® 8th generation processors.
- <sup>29</sup> Firmware TPM: Is version 2.0. Hardware TPM is v1.2, which is a subset of the TPM 2.0 specification version v0.89 as implemented by Intel Platform Trust Technology (PTT).
- <sup>30</sup> RAID configuration: Is optional and does require a second hard drive.
- <sup>31</sup> HP Sure Run: Is available on HP Elite products equipped with 8th generation Intel® or AMD processors.
- <sup>32</sup> Intel® Identity Protection Technology (Intel® IPT): Models configured with Intel® Core™ processors have the ability to utilize advanced security protection for online transactions. Intel® Identity Protection Technology (Intel® IPT), used in conjunction with participating web sites, provides double identity authentication by adding a hardware component in addition to the usual user name and password. Intel® Identity Protection Technology (Intel® IPT) is initialized through an HP Client Security module.
- <sup>33</sup> Intel® Turbo Boost technology requires a PC with a processor with Intel Turbo Boost capability. Intel Turbo Boost performance varies depending on hardware, software and overall system configuration. See [www.intel.com/technology/turboboost](http://www.intel.com/technology/turboboost) for more information.
- <sup>34</sup> Intel® Optane™ memory system acceleration does not replace or increase the DRAM in your system and requires configuration with an optional Intel® Core™ i(5 or 7)+ processor.
- <sup>35</sup> Some functionality of vPro, such as Intel Active Management Technology and Intel Virtualization technology, requires additional 3rd party software in order to run. Availability of future "virtual appliances" applications for Intel vPro technology is dependant on 3rd party software providers. Compatibility with future "virtual appliances" is yet to be determined.

## Sign up for updates [hp.com/go/getupdated](http://hp.com/go/getupdated)

© Copyright 2018 HP Development Company, L.P. The information contained herein is subject to change without notice. The only warranties for HP products and services are set forth in the express warranty statements accompanying such products and services. Nothing herein should be construed as constituting an additional warranty. HP shall not be liable for technical or editorial errors or omissions contained herein.

Intel, the Intel logo, Intel Core, Optane, vPro, Thunderbolt, and Core Inside are trademarks or registered trademarks of Intel Corporation or its subsidiaries in the United States and other countries. USB Type-C™ and USB-C™ are trademarks of USB Implementers Forum. Adobe PDF is a trademark of Adobe Systems Incorporated. DisplayPort™ and the DisplayPort™ logo are trademarks owned by the Video Electronics Standards Association (VESA®) in the United States and other countries. AMD and Radeon are trademarks of Advanced Micro Devices, Inc. ENERGY STAR is a registered trademark owned by the U.S. Environmental Protection Agency. All other trademarks are the property of their respective owners.

