



# HP EliteOne 800 G4 23.8-inch Non-Touch All-in-One PC

Modernize any workspace with an AiO PC that makes a great first impression. The HP EliteOne AiO delivers serious performance, engaging collaboration, multi-faceted security, and purposeful manageability in a stunning and sleek 23.8-inch diagonal micro-edge bezel design.



HP recommends Windows 10 Pro.

- Windows 10 Pro<sup>1</sup>
- 23.8" diagonal screen

## Amazing from any angle

- Count on this purposefully designed AiO to impress. Work in style on the elegant HP EliteOne 800 AiO with its thin profile, micro-edge anti-glare display, and superb cable management.

## Performance first

- Users will enjoy powerful 8th Gen Intel® Core™ processors<sup>2</sup>, optional Intel® Optane™ memory<sup>3</sup>.

## Strong security, powerful manageability

- Get powerful protection and simplified management from our most secure and manageable PCs. HP Sure Start Gen4<sup>4</sup> protects against BIOS attacks while the HP Manageability Integration Kit Gen2<sup>7</sup> allows you to easily manage devices through Microsoft System Center Configuration Manager.

## See and hear them clearly

- Collaborate with the sharpness of a face-to-face meeting on the 23.8-inch diagonal FHD display with crystal-clear audio and either a front-facing pop-up IR camera with a rear-facing FHD Camera<sup>8</sup>, or a front facing pop-up FHD camera<sup>9</sup>.

## Featuring

- Power through your day with Windows 10 Pro with built-in security, collaboration, and connectivity.
- Protect the firmware that antivirus can't reach! The hardware-enforced self-healing protection offered by HP Sure Start Gen4 automatically recovers the BIOS from malware, rootkits, or corruption.
- Keep your critical applications and processes running even if malware tries to shut them down with self-healing protection.
- Help protect your PC from websites, attachments, malware, ransomware, and viruses with hardware-enforced security from HP Sure Click.
- Quickly and securely restore PCs to the latest image using a network connection with HP Sure Recover.
- Improve the quality and security of custom Windows images with HP Image Assistant Gen3 which assists ITDMs with image creation, identifies problems, and provides recommendations and remediation.
- The HP Manageability Integration Kit helps speed up image creation and management of hardware, BIOS, and security through Microsoft System Center Configuration Manager.
- Fortify your security with up to three authentication factors including fingerprints and facial recognition.

# HP EliteOne 800 G4 23.8-inch Non-Touch All-in-One PC Specifications Table



<b>Form Factor</b>	All-in-one
<b>Available Operating System</b>	Windows 10 Pro 64 – HP recommends Windows 10 Pro. <sup>1</sup> Windows 10 Pro 64 (National Academic only) <sup>2</sup> Windows 10 Home 64 <sup>1</sup> Windows 10 Home Single Language 64 <sup>1</sup> FreeDOS 2.0
<b>Processor Family</b> <sup>19,20</sup>	Intel® Celeron® processor (G4900 is Windows 10 only); 8th Generation Intel® Core™ i7 processor (i7-8700); 8th Generation Intel® Core™ i7 + processor (Core™ i7 and Intel® Optane™ memory); 8th Generation Intel® Core™ i5 + processor (Core™ i5 and Intel® Optane™ memory); Intel® Pentium® processor (G5400, G5400T, G5500, G5500T, G5600 are Windows 10 only); 8th Generation Intel® Core™ i5 processor (i5-8500, i5-8600); 8th Generation Intel® Core™ i3 processor (i3-8100, i3-8300)
<b>Available Processors</b> <sup>3,21,22</sup>	Intel® Core™ i3-8100 with Intel® UHD Graphics 630 (3.6 GHz, 6 MB cache, 4 cores); Intel® Celeron® G4900 with Intel® UHD Graphics 610 (3.1 GHz, 2 MB cache, 2 cores); Intel® Pentium® Gold G5400 with Intel® UHD Graphics 610 (3.7 GHz, 4 MB cache, 2 cores); Intel® Core™ i3-8300 with Intel® UHD Graphics 630 (3.7 GHz, 8 MB cache, 4 cores); Intel® Pentium® Gold G5600 with Intel® UHD Graphics 630 (3.9 GHz, 4 MB cache, 2 cores); Intel® Pentium® Gold G5500T with Intel® UHD Graphics 630 (3.2 GHz, 4 MB cache, 2 cores); Intel® Pentium® Gold G5400T with Intel® UHD Graphics 610 (3.1 GHz, 4 MB cache, 2 cores); Intel® Pentium® Gold G5500 with Intel® Turbo Boost Technology, 12 MB cache, 6 cores); Intel® Core™ i7-8700 vPro™ processor (Core™ i7 and 16 GB Intel® Optane™ memory) with Intel® UHD Graphics 630 (3.2 GHz base frequency, up to 4.6 GHz with Intel® Turbo Boost Technology, 12 MB cache, 6 cores); Intel® Core™ i5-8600 vPro™ processor with Intel® UHD Graphics 630 (3.1 GHz base frequency, up to 4.3 GHz with Intel® Turbo Boost Technology, 9 MB cache, 6 cores); Intel® Core™ i5+ 8600 vPro™ processor (Core™ i5 and 16 GB Intel® Optane™ memory) with Intel® UHD Graphics 630 (3.1 GHz base frequency, up to 4.3 GHz with Intel® Turbo Boost Technology, 9 MB cache, 6 cores); Intel® Core™ i5-8500 vPro™ processor with Intel® UHD Graphics 630 (3 GHz base frequency, up to 4.1 GHz with Intel® Turbo Boost Technology, 9 MB cache, 6 cores); Intel® Core™ i5+ 8500 vPro™ processor (Core™ i5 and 16 GB Intel® Optane™ memory) with Intel® UHD Graphics 630 (3 GHz base frequency, up to 4.1 GHz with Intel® Turbo Boost Technology, 9 MB cache, 6 cores)
<b>Chipset</b>	Intel® Q370
<b>Maximum Memory</b>	32 GB DDR4-2666 SDRAM <sup>4,13</sup> Transfer rates up to 2666 MT/s.
<b>Memory Slots</b>	2 SODIMM
<b>Internal Storage</b>	500 GB up to 1 TB 7200 rpm SATA <sup>5</sup> up to 2 TB 5400 rpm SATA <sup>5</sup> up to 500 GB SATA SED Opal 2 HDD <sup>5</sup> up to 500 GB 7200 rpm SATA FIPS SED <sup>5</sup> 500 GB up to 2 TB 5400 rpm SATA SSHD <sup>5</sup> 256 GB up to 512 GB SATA SED Opal 2 TLC SSD <sup>5</sup> 256 GB up to 512 GB SATA FIPS SSD <sup>5</sup> 128 GB up to 512 GB PCIe® NVMe™ M.2 SSD <sup>5</sup> 128 GB up to 1 TB PCIe® NVMe™ TLC M.2 SSD <sup>5</sup> 256 GB up to 512 GB PCIe® NVMe™ SED Opal 2 TLC M.2 SSD <sup>5</sup> 128 GB up to 512 GB SATA SSD <sup>5</sup>
<b>Optical Drive</b>	HP 9.5 mm Slim DVD-Writer; HP 9.5 mm Slim DVD-ROM; HP 9.5 mm Slim Blu-ray writer <sup>17</sup>
<b>Display</b>	23.8" diagonal FHD IPS widescreen WLED-backlit anti-glare (1920 x 1080)
<b>Available Graphics</b>	Integrated: Intel® UHD Graphics 630; Intel® UHD Graphics 610
<b>Audio</b>	Audio by Bang & Olufsen, headset and headphone side ports (3.5 mm), line out rear port (3.5 mm), high performance integrated stereo speakers <sup>18</sup>
<b>Expansion Slots</b>	1 M.2 2230; 2 M.2 2230/2280 (1 M.2 2230 slot for WLAN and 2 M.2 2230/2280 slot for storage.)
<b>Ports and Connectors</b>	Side: 1 headphone; 1 headset connector Bottom: 1 audio-out; 1 DisplayPort™ 1.2; 1 HDMI; 1 power connector; 1 RJ-45; 2 USB 3.1 Gen 1; 4 USB 3.1 Gen 2; 1 USB 3.1 Type-C™ Gen 2 <sup>6</sup> Optional: 1 SD 4 card reader
<b>Input Devices</b>	HP Conferencing Keyboard; HP USB Business Slim Keyboard; HP USB Keyboard; HP Wireless Business Slim Keyboard and Mouse Combo; HP Wireless Collaboration Keyboard <sup>14</sup> HP USB 1000 dpi Laser Mouse; HP USB Antimicrobial Mouse; HP USB Hardened Mouse; HP USB Optical Mouse; HP USB Premium Mouse <sup>8,16</sup>
<b>Communications</b>	LAN: Integrated Intel® I219LM GbE LOM WLAN: Realtek RTL8822BE-CG 802.11a/b/g/n/ac (2x2) with Bluetooth® 4.1 M.2 PCIe®; Intel® Dual Band Wireless-AC 9560 802.11ac (2x2) and Bluetooth® 5 M.2, non-vPro™; Intel® Dual Band Wireless-AC 9560 802.11ac (2x2) and Bluetooth® 5 M.2, vPro™; Realtek RTL8821CE-CG 802.11a/b/g/n/ac (1x1) with Bluetooth® 4.2 M.2 PCIe® <sup>7</sup>
<b>Drive Bays</b>	One 2.5" HDD
<b>Camera</b>	2 MP full HD pop-up webcam with integrated dual array digital microphone, maximum resolution of 1920 x 1080; 2 MP, 1080p, FHD pop-up Camera with IR sense (front) and 2 MP webcam (rear) with integrated dual array digital microphone, maximum resolution of 1920 x 1080, IR camera for face authentication with Windows Hello <sup>17</sup>
<b>Available Software</b>	Absolute Persistence module; HP ePrint Driver + JetAdvantage; HP Hotkey Support; HP Jumpstart; HP Noise Cancellation Software; HP PhoneWise; HP Support Assistant; HP Velocity; Intel® Unite™ with Skype for Business plug-in; Native Miracast Support; HP Wireless Wakeup; Buy Office (sold separately); HP WorkWise; HP Sure Recover <sup>9,23,24,25,26,27,28</sup>
<b>Security Management</b>	DriveLock; Hood sensor; HP BIOSphere; HP Password Manager; HP Power On Authentication; Intel® Identity Protection Technology (Intel® IPT); Power-on password (via BIOS); RAID configurations; Removable media write/boot control; SATA port disablement (via BIOS); Setup password (via BIOS); USB enable/disable (via BIOS); HP Client Security Suite Gen 4; HP Sure Start Gen 4; HP Sure Run; Fingerprint reader; Parallel enable/disable (via BIOS); Serial enable/disable (via BIOS); Trusted Platform Module TPM 2.0 Embedded Security Chip shipped with Windows 10 (Common Criteria EAL4+ Certified)(FIPS 140-2 Level 2 Certified) <sup>11,31,32,33,34,35,36,37,38,39</sup>
<b>Management Features</b>	HP BIOS Config Utility (download); HP Client Catalog (download); HP Driver Packs (download); HP System Software Manager (download); Ivanti Management Suite; HP Management Integration Kit for Microsoft System Center Configuration Management Gen 2 <sup>10,29,30</sup>
<b>Power</b>	180 W internal power supply, up to 90% efficiency, active PFC
<b>Dimensions</b>	53.96 x 18.02 x 46.77 cm (With basic stand.)
<b>Weight</b>	8.93 kg (Lowest weight configuration with adjustable height stand. Weight will vary by configuration.)
<b>Environmental</b>	Low halogen <sup>15</sup>
<b>Energy Efficiency Compliance</b>	ENERGY STAR® certified; EPEAT® Gold; CECP <sup>12</sup>

## HP EliteOne 800 G4 23.8-inch Non-Touch All-in-One PC

### Recommended Accessories and Services

---

#### HP Wireless Slim Business Keyboard



Enjoy easy data entry and wireless connectivity with the HP Wireless Business Slim Keyboard, designed to complement the 2015 class of HP Business PCs.  
**Product number: N3R88AA**

---

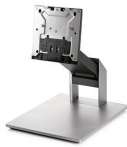
#### HP Master Keyed Cable Lock 10mm



Help keep your notebook safe in the office and high-traffic areas by tethering it to a secure surface with the HP Master Keyed Cable Lock 10mm, designed specifically for ultra-thin profile notebooks.  
**Product number: T1A63AA**

---

#### HP EliteOne G3 800 AiO Recline Stand



Create a customized workspace for your HP All-in-One with the HP EliteOne 800 G3 AiO Recline Stand, which allows you to recline the system for maximum usability in a range of settings.  
**Product number: Z9H67AA**

---

#### HP 3-year Next Business Day Onsite Optional Customer Self Repair Desktop/Workstation Only Hardware Service



Receive 3 years of next business day onsite repair from an HP-qualified technician for your computing device, if the issue cannot be solved remotely. For more information on Care Pack services, please visit [www.hp.com/go/cpc](http://www.hp.com/go/cpc).  
**Product number: UE379E**

---

## Messaging Footnotes

- <sup>1</sup> Not all features are available in all editions or versions of Windows. Systems may require upgraded and/or separately purchased hardware, drivers, software or BIOS update to take full advantage of Windows functionality. Windows 10 is automatically updated, which is always enabled. ISP fees may apply and additional requirements may apply over time for updates. See <http://www.windows.com>.
- <sup>2</sup> Multi-Core is designed to improve performance of certain software products. Not all customers or software applications will necessarily benefit from use of this technology. Performance and clock frequency will vary depending on application workload and your hardware and software configurations. Intel's numbering, branding and/or naming is not a measurement of higher performance.
- <sup>3</sup> Intel® Optane™ memory system acceleration does not replace or increase the DRAM in your system and requires configuration with an optional Intel® Core™ i(5 or 7)+ processor.
- <sup>4</sup> AMD Radeon™ graphics sold separately and must be configured at the factory.
- <sup>5</sup> HP Sure Start Gen4 is available on HP Elite and HP Pro 600 products equipped with 8th generation Intel® or AMD processors.
- <sup>7</sup> HP Manageability Integration Kit can be downloaded from <http://www8.hp.com/us/en/ads/clientmanagement/overview.html>.
- <sup>8</sup> Sold as an optional feature must be configured at the factory.
- <sup>9</sup> Based on HP's unique and comprehensive security capabilities at no additional cost and HP Manageability Integration Kit's management of every aspect of a PC including hardware, BIOS and software management using Microsoft System Center Configuration Manager among vendors with >1M unit annual sales as of January 2018 on HP Elite PCs with 7th Gen and higher Intel® Core™ Processors, Intel® integrated graphics, and Intel® WLAN.
- <sup>9</sup> HP Sure Run is available on HP Elite products equipped with 8th generation Intel® or AMD processors.
- <sup>10</sup> HP Sure Click is available on select HP platforms and supports Microsoft® Internet Explorer, Google Chrome, and Chromium™. Supported attachments include Microsoft Office (Word, Excel, PowerPoint) and PDF files in read only mode. Check <http://h20195.www2.hp.com/v2/GetDocument.aspx?docname=4AA7-0922ENW> for all compatible platforms as they become available.

## Technical Specifications Footnotes

- <sup>1</sup> Not all features are available in all editions or versions of Windows. Systems may require upgraded and/or separately purchased hardware, drivers, software or BIOS update to take full advantage of Windows functionality. Windows 10 is automatically updated, which is always enabled. ISP fees may apply and additional requirements may apply over time for updates. See <http://www.windows.com/>.
- <sup>2</sup> Some devices for academic use will automatically be updated to Windows 10 Pro Education with the Windows 10 Anniversary Update. Features vary; see <https://aka.ms/ProEducation> for Windows 10 Pro Education feature information.
- <sup>3</sup> Multi-core is designed to improve performance of certain software products. Not all customers or software applications will necessarily benefit from use of this technology. Performance and clock frequency will vary depending on application workload and your hardware and software configurations. Intel's numbering, branding and/or naming is not a measurement of higher performance.
- <sup>4</sup> For systems configured with more than 3 GB of memory and a 32-bit operating system, all memory may not be available due to system resource requirements. Addressing memory above 4 GB requires a 64-bit operating system. Memory modules support data transfer rates up to 2133 MT/s; actual data rate is determined by the system's configured processor. See processor specifications for supported memory data rate. All memory slots are customer accessible / upgradeable.
- <sup>5</sup> For hard drives and solid state drives, GB = 1 billion bytes. TB = 1 trillion bytes. Actual formatted capacity is less. Up to 16 GB (for Windows 7) and 36 GB (for Windows 8.1/10) of system disk is reserved for the system recovery software.
- <sup>6</sup> (1) USB 3.1 Gen 2: charging, 10 Gbit/s data speed; (2) USB 3.1 Gen 1: keyboard/mouse wake capable, 5 Gbit/s data speed; (1) DisplayPort™ 1.2: for Integrated graphics models or (1) DisplayPort™ 1.4 for Discrete graphics models; (1) USB 3.1 Type-C™ Gen 2: 10 Gbit/s data speed.
- <sup>7</sup> Wireless access point and internet service required. The specifications for the 802.11ac WLAN are draft specifications and are not final. If the final specifications differ from the draft specifications, it may affect the ability of the notebook to communicate with other 802.11ac WLAN devices.
- <sup>8</sup> Antimicrobial USB Mouse and HP USB Hardened Mouse are not available in all regions.
- <sup>9</sup> Miracast is a wireless technology your PC can use to project your screen to TVs, projectors, and streaming.
- <sup>10</sup> HP Driver Packs: Not preinstalled, however available for download at <http://www.hp.com/go/clientmanagement>.
- <sup>11</sup> HP BIOSphere Gen4: Requires Intel® or AMD 8th Gen processors. Features may vary depending on the platform and configurations.
- <sup>12</sup> EPEAT® registered where applicable. EPEAT registration varies by country. See [www.epeat.net](http://www.epeat.net) for registration status by country. See HP's 3rd party option store for solar energy accessory [www.hp.com/go/options](http://www.hp.com/go/options).
- <sup>13</sup> All memory slots are customer accessible / upgradeable.
- <sup>14</sup> HP USB and PS/2 Washable Keyboard: PS/2 port not available on EliteOne 800 G4 AiOs.
- <sup>15</sup> External power supplies, power cords, cables and peripherals are not Low Halogen. Service parts obtained after purchase may not be Low Halogen.
- <sup>16</sup> HP USB and PS/2 Washable Mouse: PS/2 port not available on EliteOne 800 G4 AiOs.
- <sup>17</sup> Sold separately or as an optional feature.
- <sup>18</sup> All HP devices which carry the Bang & Olufsen brand are custom-tuned with Bang & Olufsen's acoustical engineers for precise sound experience in business use.
- <sup>19</sup> Your product does not support Windows 8 or Windows 7. In accordance with Microsoft's support policy, HP does not support the Windows 8 or Windows 7 operating system on products configured with Intel® 8th generation and forward processors or provide any Windows 8 or Windows 7 drivers on <http://www.support.hp.com>.
- <sup>20</sup> Some functionality of vPro, such as Intel Active Management Technology and Intel Virtualization technology, requires additional 3rd party software in order to run. Availability of future "virtual appliances" applications for Intel vPro technology is dependant on 3rd party software providers. Compatibility with future "virtual appliances" is yet to be determined.
- <sup>21</sup> Intel® Optane™ memory system acceleration does not replace or increase the DRAM in your system and requires configuration with an optional Intel® Core™ i(5 or 7)+ processor.
- <sup>22</sup> Intel® Turbo Boost technology requires a PC with a processor with Intel Turbo Boost capability. Intel Turbo Boost performance varies depending on hardware, software and overall system configuration. See [www.intel.com/technology/turboboost](http://www.intel.com/technology/turboboost) for more information.
- <sup>23</sup> Absolute Persistence Module: Absolute agent is shipped turned off, and will be activated when customers activate a purchased subscription. Subscriptions can be purchased for terms ranging multiple years. Service is limited, check with Absolute for availability outside the U.S. The Absolute Recovery Guarantee is a limited warranty. Certain conditions apply. For full details visit: <http://www.absolute.com/company/legal/agreements/computrace-agreement>. Data Delete is an optional service provided by Absolute Software. If utilized, the Recovery Guarantee is null and void. In order to use the Data Delete service, customers must first sign a Pre-Authorization Agreement and either obtain a PIN or purchase one or more RSA SecurID tokens from Absolute Software.
- <sup>24</sup> HP ePrint Driver: Requires an Internet connection to HP web-enabled printer and HP ePrint account registration (for a list of eligible printers, supported documents and image types and other HP ePrint details, see [www.hp.com/go/eprintcenter](http://www.hp.com/go/eprintcenter)). Print times and connection speeds may vary.
- <sup>25</sup> HP Support Assistant: Requires Windows and Internet access.
- <sup>26</sup> HP WorkWise: Smartphone app is available as a free download on Google Play.
- <sup>27</sup> HP Sure Recover: is available on HP Elite PCs with 8th generation Intel® or AMD processors and requires an open, wired network connection. You must back up important files, data, photos, videos, etc. before using HP Sure Recover to avoid loss of data.
- <sup>28</sup> Intel® Unite™ with Skype for Business plug-in: Sold separately or as an optional feature.
- <sup>29</sup> HP Manageability Integration Kit: Can be downloaded from <http://www8.hp.com/us/en/ads/clientmanagement/overview.html>.
- <sup>30</sup> Ivanti Management Suite: Subscription required.
- <sup>31</sup> HP Client Security Suite Gen 4: Requires Windows and Intel® or AMD 8th generation processors.
- <sup>32</sup> HP Password Manager: Requires Internet Explorer or Chrome or FireFox. Some websites and applications may not be supported. User may need to enable or allow the add-on / extension in the internet browser.
- <sup>33</sup> Microsoft Defender: Opt in and internet connection required for updates.
- <sup>34</sup> HP Sure Start Gen4: Is available on HP EliteBook products equipped with Intel® 8th generation processors.
- <sup>35</sup> Firmware TPM: Is version 2.0. Hardware TPM is v1.2, which is a subset of the TPM 2.0 specification version v0.89 as implemented by Intel Platform Trust Technology (PTT).
- <sup>36</sup> RAID configuration: Is optional and does require a second hard drive.
- <sup>37</sup> HP Sure Run: Is available on HP Elite products equipped with 8th generation Intel® or AMD processors.
- <sup>38</sup> Intel® Identity Protection Technology (Intel® IPT): Models configured with Intel® Core™ processors have the ability to utilize advanced security protection for online transactions. Intel® Identity Protection Technology (Intel® IPT), used in conjunction with participating web sites, provides double identity authentication by adding a hardware component in addition to the usual user name and password. Intel® Identity Protection Technology (Intel® IPT) is initialized through an HP Client Security module.
- <sup>39</sup> Fingerprint reader: standard on 800 G4 AiO touch models and optional on non-touch models.

## Sign up for updates

[hp.com/go/getupdated](http://hp.com/go/getupdated)

© Copyright 2018 HP Development Company, L.P. The information contained herein is subject to change without notice. The only warranties for HP products and services are set forth in the express warranty statements accompanying such products and services. Nothing herein should be construed as constituting an additional warranty. HP shall not be liable for technical or editorial errors or omissions contained herein.

Bluetooth is a trademark of its proprietor and used by HP Inc. under license. Microsoft, Windows, and the Windows Logo are trademarks or registered trademarks of Microsoft Corporation in the U.S. and other countries. Intel, the Intel logo, Intel Core, Ultrabook and Core Inside are trademarks or registered trademarks of Intel Corporation or its subsidiaries in the United States and other countries. USB Type-C™ and USB-C™ are trademarks of USB Implementers Forum. DisplayPort™ and the DisplayPort™ logo are trademarks owned by the Video Electronics Standards Association (VESA®) in the United States and other countries. ENERGY STAR and the ENERGY STAR mark are registered trademarks owned by the U.S. Environmental Protection Agency. All Rights Reserved. All other trademarks are the property of their respective owners.

