

Datasheet

HP ProDesk 600 G4 Microtower PC (with PCI slot)



Ready for expansion.

Powered for business, the HP ProDesk 600 MT is a highly expandable PC featuring flexible connectivity options, strong security, and comprehensive manageability features in a stylishly designed chassis for the modern workplace.



HP recommends Windows 10 Pro.

- Windows 10 Pro¹
- Intel® Core™ processors²

Expansion that extends your investment

- The full value of your investment comes with expansion that extends the life of your PC. The HP ProDesk 600 MT has four bays and four full-height slots, and configurable video and legacy ports.

Powerful options

- Get high-performance and expansion with 8th Gen Intel® Core™ processors². Amplify performance with optional Intel® Optane™ memory³ dual graphics cards⁴ and a 400w PSU¹ for viewing VR content.

Built on a secure foundation

- Protect your PC against the evolving malware threats of the future, with our self-healing, hardware-enforced, and manageable security solutions. From the BIOS to the browser HP Sure Start Gen4⁵ and HP Sure Click⁶ help secure your PC.

Connection hub

- With 11 total USB ports including one USB Type-C™, up to three video outputs, and optional Bluetooth™⁴ connectivity, the HP ProDesk 600 SFF becomes a hub for all your devices in the office.

Featuring

- Power through your day with Windows 10 Pro with built-in security, collaboration, and connectivity.¹
- Protect the firmware that antivirus can't reach! The hardware-enforced self-healing protection offered by HP Sure Start Gen4 automatically recovers the BIOS from malware, rootkits, or corruption.⁵
- Help protect your PC from websites, attachments, malware, ransomware, and viruses with hardware-enforced security from HP Sure Click.⁶
- Keep productivity high and downtime low with HP BIOSphere Gen4 firmware-level automation. Your PCs have extra protection thanks to automatic updates and security checks.⁷
- The HP Manageability Integration Kit Gen2 helps speed up image creation and management of hardware, BIOS, and security through Microsoft System Center Configuration Manager.⁸
- HP Client Security Manager Gen4 features HP Multi-Factor Authenticate Gen2, HP Device Access Manager, HP SpareKey, and HP Password Manager. These tools work to keep data out of reach and defend against theft, attacks, and unauthorized users.^{9,10}
- Improve the quality and security of custom Windows images with HP Image Assistant Gen3 which assists ITDMs with image creation, identifies problems, and provides recommendations and remediation.
- Greatly improve data, voice, and video communication transfer rates over challenged LAN and Wi-Fi networks with HP Velocity.

HP ProDesk 600 G4 Microtower PC (with PCI slot) Specifications Table

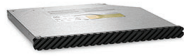


Form Factor	Microtower
Available Operating System	Windows 10 Pro 64 – HP recommends Windows 10 Pro. ¹ Windows 10 Home 64 ¹ Windows 10 Home Single Language 64 ¹ FreeDOS 2.0
Maximum Memory	Up to 64 GB DDR4-2666 SDRAM ^{3,4} Standard memory note: Transfer rates up to 2666 MT/s.
Memory slots	4 DIMM
Internal Storage	500 GB up to 2 TB 7200 rpm SATA HDD ² up to 500 GB SATA SED Opal 2 HDD ² 256 GB up to 512 GB SATA SED Opal 2 TLC SSD ² 128 GB up to 512 GB PCIe® NVMe™ M.2 SSD ² 128 GB up to 512 GB PCIe® NVMe™ TLC M.2 SSD ² 500 GB up to 2 TB 7200 rpm SATA ²
Optical Storage	HP 9.5 mm Slim DVD-Writer; HP 9.5 mm Slim DVD-ROM ¹⁵
Available Graphics	Discrete: NVIDIA® GeForce® GTX 1060 (3 GB GDDR5 dedicated); AMD Radeon™ R7 430 Graphics (2 GB GDDR5 dedicated); AMD Radeon™ RX 550 Graphics (4 GB GDDR5 dedicated); AMD Radeon™ RX 580 Graphics (4 GB GDDR5 dedicated) ^{15,18}
Audio	Conexant CX20632 codec, 2 W internal speaker, universal audio jack, headset and headphone front ports (3.5 mm), multi-streaming capable
Communications	LAN: Intel® I210-T1 PCIe® GbE; Intel® I219LM GbE ¹⁶ WLAN: Intel® Dual Band Wireless-AC 9560 802.11ac (2x2) and Bluetooth® 5 M.2, non-vPro™ ⁵
Expansion Slots	1 M.2 2230; 1 PCIe x1; One 5-in-1 media card reader; 1 M.2 2230/2280; 1 PCIe 3 x16; 1 PCIe 3 x1; 1 PCI x1; 1 PCIe 3 x16 (wired as x4) ¹⁷ (1 M.2 slot for WLAN and 1 M.2 2230/2280 slot for storage.)
Ports and Connectors	Front: 1 headset connector; 1 USB 2.0; 1 USB 2.0 (fast charging); 2 USB 3.1 Gen 2; 1 USB 3.1 Type-C™ Gen 2 ¹⁹ Rear: 1 audio-in; 1 audio-out; 1 power connector; 1 RJ-45; 2 USB 2.0; 2 DisplayPort™ 1.2; 2 USB 3.1 Gen 1; 2 USB 3.1 Gen 2; 1 configurable video port ⁸ Optional: 1 serial; 1 serial and PS/2 ports combination
Internal Drive Bays	One 3.5" HDD; One 5.25" HDD; Two 2.5" HDD
Input Device	HP PS/2 Business Slim Keyboard; HP USB Conferencing Keyboard; HP USB Business Slim Keyboard; HP USB Business Slim Smart Card (CCID) Keyboard ⁶ HP PS/2 Mouse; HP USB 1000 dpi Laser Mouse; HP USB Optical Mouse ⁵
Available Software	Absolute Persistence module; HP Device Access Manager; HP ePrint Driver + JetAdvantage; HP Hotkey Support; HP Jumpstart; HP Noise Cancellation Software; HP PhoneWise; HP Recovery Manager; HP Secure Erase; HP Support Assistant; HP Sure Click; HP Velocity; Microsoft Defender; Native Miracast Support; HP Wireless Wakeup; Buy Office (sold separately); HP WorkWise ⁹
Security Management	DriveLock; HP BIOSphere; HP Credential Manager; HP Password Manager; HP Power On Authentication; HP Spare Key; Intel® Identity Protection Technology (Intel® IPT); Power-on password (via BIOS); RAID configurations; Removable media write/boot control; SATA port disablement (via BIOS); Setup password (via BIOS); Support for chassis padlocks and cable lock devices; USB enable/disable (via BIOS); Solenoid lock and hood sensor; Master Boot Record Security; HP Client Security Suite Gen 4; HP Sure Start Gen 4; Pre-boot Authentication; Serial enable/disable (via BIOS); Trusted Platform Module TPM 2.0 Embedded Security Chip shipped with Windows 10 (Common Criteria EAL4+ Certified)(FIPS 140-2 Level 2 Certified) ⁷
Management Features	HP BIOS Config Utility (download); HP Client Catalog (download); HP Driver Packs (download); HP System Software Manager (download); Update BIOS via Cloud or Network (BIOS feature); Ivanti Management Suite; HP Management Integration Kit for Microsoft System Center Configuration Management Gen 2 ¹⁰
Power	250 W internal power supply, up to 92% efficiency, active PFC; 400 W internal power supply, up to 92% efficiency, active PFC
Dimensions	17 x 27.4 x 33.8 cm
Weight	7.14 kg (Configured with 1 HDD and 1 ODD. Weight will vary by configuration.)
Environmental	Low halogen ¹²
Energy Efficiency Compliance	ENERGY STAR® certified; EPEAT® Gold; CECP; SEPA; CCC ¹¹
Warranty	3 year (3-3-3) limited warranty and service offering includes 3 years of parts, labor and on-site repair. Terms and conditions vary by country. Certain restrictions and exclusions apply.

HP ProDesk 600 G4 Microtower PC (with PCI slot)

Accessories and services (not included)

**HP 9.5mm G3 8/6/4 SFF G4
400 SFF/MT DVD Writer**



Affordably add an optical storage writer to your HP Desktop PC¹ with the HP 9.5mm Desktop G3 ODD, which connects through SATA and supports writing—up to 8.5 GB of data or four hours of DVD-quality video—to all DVD formats.

Product number: 1CA53AA

**HP Wireless Slim Business
Keyboard**



Enjoy easy data entry and wireless connectivity with the HP Wireless Business Slim Keyboard, designed to complement the 2015 class of HP Business PCs.

Product number: N3R88AA

HP TLC 256 GB SATA SSD



Expand the storage capabilities of your desktop with the HP TLC 256 GB SATA SSD¹, which includes TLC flash and the same reliability you already get from current from SSD drives.

Product number: P1N68AA

**HP 5 year Next business day
Onsite Desktop Only
Hardware Support**

Receive 5 years of next business day onsite HW Support from an HP-qualified technician for your computing device, if the issue cannot be solved remotely.

Product number: U7899E



HP ProDesk 600 G4 Microtower PC (with PCI slot)

Messaging Footnotes

- ¹ Not all features are available in all editions or versions of Windows. Systems may require upgraded and/or separately purchased hardware, drivers, software or BIOS update to take full advantage of Windows functionality. Windows 10 is automatically updated, which is always enabled. ISP fees may apply and additional requirements may apply over time for updates. See <http://www.windows.com>.
- ² Multi-Core is designed to improve performance of certain software products. Not all customers or software applications will necessarily benefit from use of this technology. Performance and clock frequency will vary depending on application workload and your hardware and software configurations. Intel's numbering is not a measurement of higher performance.
- ³ Intel® Optane™ memory system acceleration does not replace or increase the DRAM in your system and requires configuration with an optional Intel® Core™ i5 (5 or 7)+ processor.
- ⁴ Sold separately or as an optional feature.
- ⁵ HP Sure Start Gen4 is available on HP Elite and HP Pro 600 products equipped with 8th generation Intel® or AMD processors.
- ⁶ HP Sure Click is available on select HP platforms and supports Microsoft® Internet Explorer, Google Chrome, and Chromium™. Supported attachments include Microsoft Office (Word, Excel, PowerPoint) and PDF files in read only mode. Check <http://h20195.www2.hp.com/v2/GetDocument.aspx?docname=4AA7-0922ENW> for all compatible platforms as they become available.
- ⁷ Available on HP Elite and Pro platforms with 8th Gen Intel or AMD processors. Features may vary by platform and configuration.
- ⁸ HP Manageability Integration Kit can be downloaded from <http://www.hp.com/go/clientmanagement>.
- ⁹ HP Client Security Manager Gen4 requires Windows and Intel® or AMD 8th Gen processors.
- ¹⁰ HP Multi Factor Authenticate Gen2 requires Windows, 7th or 8th generation Intel® Core™ processor, Intel® integrated graphics, and Intel® WLAN. Microsoft System Center Configuration Manager is required for deployment. Three authentication factors require Intel® vPro™.

Technical specifications disclaimers

- ¹ Not all features are available in all editions or versions of Windows. Systems may require upgraded and/or separately purchased hardware, drivers, software or BIOS update to take full advantage of Windows functionality. Windows 10 is automatically updated, which is always enabled. ISP fees may apply and additional requirements may apply over time for updates. See <http://www.windows.com>
- ² For hard drives and solid state drives, GB = 1 billion bytes. TB = 1 trillion bytes. Actual formatted capacity is less. Up to 16 GB (for Windows 7) and 36 GB (for Windows 8.1/10) of system disk is reserved for the system recovery software.
- ³ For systems configured with more than 3 GB of memory and a 32-bit operating system, all memory may not be available due to system resource requirements. Addressing memory above 4 GB requires a 64-bit operating system. Memory modules support data transfer rates up to 2133 MT/s; actual data rate is determined by the system's configured processor. See processor specifications for supported memory data rate.
- ⁴ All memory slots are customer accessible / upgradeable.
- ⁵ Wireless access point and internet service required. The specifications for the 802.11ac WLAN are draft specifications and are not final. If the final specifications differ from the draft specifications, it may affect the ability of the notebook to communicate with other 802.11ac WLAN devices.
- ⁶ Availability may vary by country.
- ⁷ Intel® Identity Protection Technology (Intel® IPT): Models configured with Intel® Core™ processors have the ability to utilize advanced security protection for online transactions. Intel® Identity Protection Technology (Intel® IPT) used in conjunction with participating web sites, provides double identity authentication by adding a hardware component in addition to the usual user name and password. Intel® Identity Protection Technology (Intel® IPT) is initialized through an HP Client Security module. HP BIOSphere Gen4: features may vary depending on the PC platform and configurations requires 8th Gen Intel® processors; HP Client Security Suite Gen 4: requires Windows and Intel® or AMD 8th generation processors; HP Password Manager: requires Internet Explorer or Chrome™ or Firefox. Some websites and applications may not be supported. User may need to enable or allow the add-on / extension in the internet browser. HP Sure Start Gen 4: is available on HP ProDesk & ProOne products equipped with Intel® 8th generation processors; RAID configuration: sold separately or as an optional feature, multiple data drives setup in a RAID array is optional and requires product to be configured with vPro™ at purchase; Trusted Platform Module TPM 2.0 Embedded Security Chip shipped with Windows 10 (Common Criteria EAL4+ Certified)(FIPS 140-2 Level 2 Certified): In some scenarios, machines pre-configured with Windows OS might ship with TPM turned off.
- ⁸ (1) configurable video port: Choice of DisplayPort™ 1.2, HDMI™ 2.0, VGA, or USB Type-C™ with display output; (2) USB 3.1 Gen 2: 10 GBit/s data speed; (2) USB 3.1 Gen 1: 5 GBit/s data speed and supporting waking from S4/S5 with keyboard/mouse connected.
- ⁹ Absolute Persistence module: is shipped turned off, and will be activated when customers activate a purchased subscription. Subscriptions can be purchased for terms ranging multiple years. Service is limited, check with Absolute for availability outside the U.S. The Absolute Recovery Guarantee is a limited warranty. Certain conditions apply. For full details visit: <http://www.absolute.com/company/legal/agreements/computrace-agreement>. Data Delete is an optional service provided by Absolute Software. If utilized, the Recovery Guarantee is null and void. In order to use the Data Delete service, customers must first sign a Pre-Authorization Agreement and either obtain a PIN or purchase one or more RSA SecurID tokens from Absolute Software; Native Miracast Support: is a wireless technology your PC can use to project your screen to TVs, projectors, and streaming; HP ePrint Driver + JetAdvantage: requires an Internet connection to HP web-enabled printer and HP ePrint account registration (for a list of eligible printers, supported documents and image types and other HP ePrint details, see www.hp.com/go/eprintcenter). Print times and connection speeds may vary; HP Support Assistant: requires Windows and Internet access; HP PhoneWise: HP PhoneWise Client may not be available with HP Workwise. For supported platforms and HP PhoneWise system requirements see www.hp.com/go/HPPhoneWise; HP WorkWise: HP WorkWise smartphone app is available as a free download on the Google Play. As of September 2017, HP WorkWise will no longer support iOS or iPhone® devices; Microsoft Defender: Microsoft Defender Opt in and internet connection required for updates; HP Sure Click: is available on select HP platforms and supports Microsoft® Internet Explorer and Chromium™. Check <http://h20195.www2.hp.com/v2/GetDocument.aspx?docname=4AA7-0922ENW> for all compatible platforms as they become available; HP Secure Erase: for the methods outlined in the National Institute of Standards and Technology Special Publication 800-88. Supported on Elite platforms with BIOS version F.03 or higher; HP Velocity: Availability may vary by country.
- ¹⁰ HP Driver Packs: not preinstalled, however available for download at <http://www.hp.com/go/clientmanagement>; HP Management Integration Kit for Microsoft System Center Configuration Management Gen 2: can be downloaded from <http://www8.hp.com/us/en/ads/clientmanagement/overview.html>; Ivanti Management Suite: subscription required.
- ¹¹ EPEAT® registered where applicable. EPEAT registration varies by country. See www.epeat.net for registration status by country. See HP's 3rd party option store for solar energy accessory at www.hp.com/go/options.
- ¹² External power supplies, power cords, cables and peripherals are not Low Halogen. Service parts obtained after purchase may not be Low Halogen.
- ¹⁴ NOTE: Your product does not support Windows 8 or Windows 7. In accordance with Microsoft's support policy, HP does not support the Windows® 8 or Windows 7 operating system on products configured with Intel® and AMD 7th generation and forward processors or provide any Windows® 8 or Windows 7 drivers on <http://www.support.hp.com>
- ¹⁵ Sold separately or as an optional feature.
- ¹⁶ Intel® i210-T1 PCIe® GbE: Sold separately or as an optional feature, which is subject to change and availability.
- ¹⁷ (2) PCIe 3 x1: On certain models, it would be (1) PCI Express x1 and (1) PCI x1.
- ¹⁸ The MT can support a single graphics card up to 75W. When configured with dual graphics cards support is limited to 35W for each.
- ¹⁹ (2) USB 3.1 Gen 2: 10 GBit/s data speed; (1) USB 3.1 Type-C™ Gen 2: 10 GBit/s data speed.

Sign up for updates
www.hp.com/go/getupdated

© Copyright 2018 HP Development Company, L.P. The information contained herein is subject to change without notice. The only warranties for HP products and services are set forth in the express warranty statements accompanying such products and services. Nothing herein should be construed as constituting an additional warranty. HP shall not be liable for technical or editorial errors or omissions contained herein. Bluetooth is a trademark of its proprietor and used by HP Inc. under license. Microsoft, Windows, and the Windows Logo are trademarks or registered trademarks of Microsoft Corporation in the U.S. and other countries. Intel, Optane, vPro, the Intel logo, Intel Core, and Core Inside are trademarks or registered trademarks of Intel Corporation or its subsidiaries in the United States and other countries. USB Type-C™ and USB-C™ are trademarks of USB Implementers Forum. Adobe PDF is a trademark of Adobe Systems Incorporated. ENERGY STAR and the ENERGY STAR mark are registered trademarks owned by the U.S. Environmental Protection Agency. All Rights Reserved. All other trademarks are the property of their respective owners.

