

Datasheet

HP EliteDesk 705 35W G4 Desktop Mini PC



Ultra-small, enterprise ready.

Get outstanding power that meets your budget requirements with the performance, security, manageability, and expandability of the HP EliteDesk 705 Desktop Mini.



HP recommends Windows 10 Pro.

- Windows 10 Pro¹
- AMD Ryzen™ Processor²

Meet the mighty Mini

- Create panoramic views of static and dynamic imagery on up to 7 daisy-chained displays from one PC with a 35W AMD Ryzen™ PRO Processor² and optional discrete AMD Radeon™ graphics.³

Streamlined for the Office of the Future

- Take your footprint down to near zero with a PC that mounts securely behind an HP EliteDisplay⁴, or place it almost anywhere with HP accessories.³ Reduce display connection clutter with a single short USB-C™ cable⁵ and rear I/O ports.

Expansion that extends your investment

- Maximize PC life as your business needs change with an optional³ serial port for legacy devices or VGA, HDMI, Display Port™ or USB-C™ DisplayPort™ Alt-Mode for displays.

Built-in security and manageability

- Get a highly secure and manageable PC that has the self-healing protection of HP Sure Start Gen4⁶, and easily manage devices through Microsoft through Microsoft System Center Configuration Manager with HP Manageability Integration Kit.⁷

Featuring

- Be productive in any situation with Windows 10 Pro and powerful security, collaboration, and connectivity features from HP.¹
- Protect your PC with the hardware-enforced self-healing protection of HP Sure Start Gen4 that automatically recovers the BIOS.⁶
- Keep your critical applications and processes running even if malware tries to shut them down with the self-healing protection of HP Sure Run.⁸
- Quickly and securely restore PCs to the latest image using a network connection with optional HP Sure Recover.⁹
- Help protect your PC from websites, attachments, malware, ransomware, and viruses with hardware-enforced security from HP Sure Click.¹⁰
- The HP Manageability Integration Kit helps speed up image creation and management of hardware, BIOS, and security through Microsoft System Center Configuration Manager.⁷
- Greatly improve data, voice, and video communication transfer rates over challenged LAN and Wi-Fi networks with HP Velocity.¹¹
- Keep data out of reach and defend against theft, attacks, and unauthorized users with HP Client Security Manager Gen4.¹²
- ITDMs can quickly help create, improve, and secure custom Windows images with HP Image Assistant Gen3.¹³
- Rest easy with a PC that goes the distance and is designed to pass HP Total Test Process and MIL-STD 810G testing.¹⁴

HP EliteDesk 705 35W G4 Desktop Mini PC Specifications Table

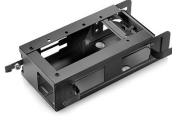


Form Factor	Mini
Available Operating System	Windows 10 Pro 64 – HP recommends Windows 10 Pro. ¹ Windows 10 Home 64 ¹ Windows 10 Home Single Language 64 ¹ FreeDOS 2.0
Available Processors³	AMD PRO A10-9700E APU with Radeon™ R7 Graphics (3 GHz base frequency, up to 3.5 GHz burst frequency, 2 MB cache, 4 cores); AMD PRO A6-9500E APU with Radeon™ R5 Graphics (3 GHz base frequency, up to 3.4 GHz burst frequency, 1 MB cache, 2 cores); AMD Ryzen™ 3 2200GE Quad-Core with Radeon™ Vega 8 Graphics (3.2 GHz base frequency, up to 3.6 GHz burst frequency, 6 MB cache); AMD Ryzen™ 5 2400GE Quad-Core with Radeon™ RX Vega 11 Graphics (3.2 GHz base frequency, up to 3.8 GHz burst frequency, 6 MB cache)
Chipset	AMD B350 FCH
Maximum Memory	Up to 32 GB DDR4-2933 SDRAM Standard memory note: Transfer rates up to 2933 MT/s.
Memory slots	2 SODIMM
Internal Storage	500 GB up to 1 TB 7200 rpm SATA HDD ⁷ up to 500 GB SATA SED ⁷ 256 GB up to 512 GB SATA SSD ⁷ 256 GB up to 512 GB SATA SED Opal 2 SSD ⁷ 256 GB up to 512 GB PCIe® NVMe™ SSD ⁷ 256 GB up to 1 TB PCIe® NVMe™ TLC M.2 SSD ⁷ 128 GB up to 256 GB PCIe® NVMe™ SED Opal 2 TLC M.2 SSD ⁷
Available Graphics	Integrated: AMD Radeon™ R5 Graphics Discrete: AMD Radeon™ RX 560 Graphics (4 GB GDDR5 dedicated) ¹²
Audio	Conexant CX20632 codec, universal audio jack, headset and headphone front ports (3.5 mm), multi-streaming capable
Communications	LAN: Realtek RTL8111EPH GbE WLAN: Intel® Dual Band Wireless-AC 9260 802.11ac (2x2) and Bluetooth® 5 M.2, non-vPro™
Expansion Slots	1 M.2 2230; 1 M.2 2230/2280 (1 M.2 slot for WLAN and 1 M.2 2230/2280 slot for storage.)
Ports and Connectors	Front: 1 headphone; 1 headset connector; 1 USB 3.1 Gen 1; 1 USB 3.1 Gen 1 (charging); 1 USB 3.1 Type-C™ Gen 2 ¹³ Rear: 1 external antenna connector; 1 power connector; 1 RJ-45; 2 DisplayPort™ 1.2; 2 USB 3.1 Gen 1; 2 USB 3.1 Gen 2; 1 configurable video port ^{14,34} Optional: 1 serial; 1 serial and PS/2 ports combination
Internal Drive Bays	One 2.5" HDD
Input Device	HP USB Conferencing Keyboard; HP USB Business Slim Keyboard; HP USB Business Slim Smart Card (CCID) Keyboard HP USB 1000 dpi Laser Mouse; HP USB Optical Mouse
Available Software	Absolute Persistence module; HP ePrint Driver + JetAdvantage; HP Hotkey Support; HP Jumpstart; HP Noise Cancellation Software; HP PhoneWise; HP Recovery Manager; HP Secure Erase; HP Support Assistant; HP Velocity; Microsoft Defender; Native Miracast Support; HP Wireless Wakeup; Buy Office (sold separately); HP LAN-Wireless Protection; HP Sure Recover ^{4,18,19,20,21,22,23,24,25}
Security Management	DriveLock; Hood sensor; HP BIOSphere; HP Credential Manager; HP Device Access Manager; HP Password Manager; HP Power On Authentication; HP Security Manager; HP Spare Key; Power-on password (via BIOS); RAID configurations; SATA port disablement (via BIOS); Serial enable/disable (via BIOS); Setup password (via BIOS); Support for chassis padlocks and cable lock devices; USB enable/disable (via BIOS); Master Boot Record Security; HP Client Security Suite Gen 4; HP Sure Start Gen 4; Pre-boot Authentication; HP Sure Run; Trusted Platform Module TPM 2.0 Embedded Security Chip shipped with Windows 10 (Common Criteria EAL4+ Certified)(FIPS 140-2 Level 2 Certified) ^{6,28,29,30,31,32,33}
Management Features	HP BIOS Config Utility (download); HP Client Catalog (download); HP Driver Packs (download); HP System Software Manager (download); Update BIOS via Cloud or Network (BIOS feature); Ivanti Management Suite; HP Management Integration Kit for Microsoft System Center Configuration Management Gen 2 ^{5,26,27}
Power	150 W external power adapter, up to 89% efficiency, active PFC; 65 W external power adapter, up to 89% efficiency, active PFC ¹⁶
Dimensions	17.7 x 17.5 x 3.4 cm
Weight	1.26 kg (Exact weight depends on configuration.)
Environmental	Low halogen ¹¹
Energy Efficiency Compliance	ENERGY STAR® certified; EPEAT® Gold ¹⁰
Warranty	3 year (3-3-3) limited warranty and service offering includes 3 years of parts, labor and on-site repair. Terms and conditions vary by country. Certain restrictions and exclusions apply.

HP EliteDesk 705 35W G4 Desktop Mini PC

Accessories and services (not included)

HP DM VESA Power Supply Holder Kit



Simplify cable management when mounting your HP Desktop Mini with the HP DM VESA Power Supply Holder Kit, which attaches to your HP Desktop Mini Security/Dual VESA Sleeve v2 (2JA32AA) to reduce cable clutter from the PC's power supply cable and brick.

Product number: 1RL87AA

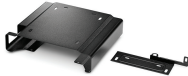
HP B300 PC Mounting Bracket



Customize an altogether better solution with the HP B300 PC Mounting Bracket, which lets you attach your HP Workstation, HP Desktop Mini, HP Chromebox or select HP Thin Client directly behind select 2017 and 2018 HP EliteDisplays and HP Z Displays.¹

Product number: 2DW53AA

HP Desktop Mini Security/Dual VESA Sleeve v2



Wrap your HP Desktop Mini PC in the HP Desktop Mini Security/Dual VESA Sleeve v2 to securely mount it—with or without an Expansion Module¹—behind your display, position the solution on a wall, and lock it down with the integrated security bracket and optional HP Ultra-Slim Cable Lock.

Product number: 2JA32AA

HP 5 year Next Business Day Onsite Hardware Support for Desktops

Receive 5 years of next business day onsite HW Support from an HP-qualified technician for your computing device, if the issue cannot be solved remotely.

Product number: U7899E



HP EliteDesk 705 35W G4 Desktop Mini PC

Messaging Footnotes

- ¹ Not all features are available in all editions or versions of Windows. Systems may require upgraded and/or separately purchased hardware, drivers, software or BIOS update to take full advantage of Windows functionality. Windows 10 is automatically updated, which is always enabled. ISP fees may apply and additional requirements may apply over time for updates. See <http://www.windows.com>.
- ² Multi-Core is designed to improve performance of certain software products. Not all customers or software applications will necessarily benefit from use of this technology. Performance and clock frequency will vary depending on application workload and your hardware and software configurations. AMD's numbering is not a measurement of clock speed.
- ³ Sold separately or as an optional feature.
- ⁴ Display sold separately. Requires HP B300 or B500 PC Mounting Bracket for Monitors, sold separately. See display QuickSpecs for bracket guidance.
- ⁵ Short USB-C™ cable included with PC configured with optional USB-C™ DisplayPort™ Alt-Mode port.
- ⁶ HP Sure Start Gen4 is available on HP Elite and HP Pro 600 products equipped with 8th generation Intel® or AMD processors. On AMD processors, only Intrusion Detection is supported.
- ⁷ HP Manageability Integration Kit can be downloaded from <http://www.hp.com/go/clientmanagement>.
- ⁸ HP Sure Run is available on HP Elite products equipped with 8th generation Intel® or AMD processors.
- ⁹ HP Sure Recover is available on HP Elite PCs with 8th generation Intel® or AMD processors and requires an open, wired network connection. Not available on platforms with multiple internal drives or Intel® Optane™. You must back up important files, data, photos, videos, etc. before using HP Sure Recover to avoid loss of data.
- ¹⁰ HP Sure Click is available on select HP platforms and supports Microsoft® Internet Explorer, Google Chrome, and Chromium™. Supported attachments include Microsoft Office (Word, Excel, PowerPoint) and PDF files in read only-mode. Check <http://h20195.www2.hp.com/v2/GetDocument.aspx?docname=4AA7-0922ENW> for all compatible platforms as they become available.

Technical specifications disclaimers

- ¹ Not all features are available in all editions or versions of Windows. Systems may require upgraded and/or separately purchased hardware, drivers, software or BIOS update to take full advantage of Windows functionality. Windows 10 is automatically updated, which is always enabled. ISP fees may apply and additional requirements may apply over time for updates. See <http://www.windows.com>.
- ² Multi-core is designed to improve performance of certain software products. Not all customers or software applications will necessarily benefit from use of this technology. Performance and clock frequency will vary depending on application workload and your hardware and software configurations. AMD's numbering is not a measurement of clock speed.
- ⁴ Native Miracast Support: is a wireless technology your PC can use to project your screen to TVs, projectors, and streaming.
- ⁵ HP Driver Packs: not preinstalled, however available for download at <http://www.hp.com/go/clientmanagement>
- ⁶ HP BIOSphere: HP BIOSphere Gen4 features may vary depending on the PC platform and configurations requires 8th Gen Intel® processors.
- ⁷ For hard drives and solid state drives, GB = 1 billion bytes. Actual formatted capacity is less. Up to 16 GB (for Windows 7) and 36 GB (for Windows 8.1/10) of system disk is reserved for the system recovery software.
- ⁸ NOTE: Your product does not support Windows 8 or Windows 7. In accordance with Microsoft's support policy, HP does not support the Windows 8 or Windows 7 operating system on products configured with Intel® and AMD 7th generation and forward processors or provide any Windows 8 or Windows 7 drivers on <http://www.support.hp.com>
- ⁹ USB Antimicrobial Mouse: Not available in all regions; HP USB Hardened Mouse: Not available in all regions.
- ¹⁰ EPEAT® registered where applicable. EPEAT registration varies by country. See www.epeat.net for registration status by country. See HP's 3rd party option store for solar energy accessory at www.hp.com/go/options.
- ¹¹ External power supplies, power cords, cables and peripherals are not Low Halogen. Service parts obtained after purchase may not be Low Halogen.
- ¹² Sold separately or as an optional feature.
- ¹³ (1) USB 3.1 Type-C™ Gen 2: Fast charging.
- ¹⁴ (2) USB 3.1 Gen 1 (5 Gbit/s): allows for wake from S4/S5 with keyboard/mouse when connected and enabled in BIOS.
- ¹⁵ One 2.5" SATA HDD: Sold separately or as an optional feature.
- ¹⁶ 150 W external power adapter, up to 89% efficiency, active PFC: when ordered with a discrete graphics card.
- ¹⁸ HP Secure Erase: for the methods outlined in the National Institute of Standards and Technology Special Publication 800-88. Supported on Elite platforms with BIOS version F.03 or higher.
- ¹⁹ Absolute Persistence module: Absolute agent is shipped turned off, and will be activated when customers activate a purchased subscription. Subscriptions can be purchased for terms ranging multiple years. Service is limited, check with Absolute for availability outside the U.S. The Absolute Recovery Guarantee is a limited warranty. Certain conditions apply. For full details visit: <http://www.absolute.com/company/legal/agreements/computrace-agreement>. Data Delete is an optional service provided by Absolute Software. If utilized, the Recovery Guarantee is null and void. In order to use the Data Delete service, customers must first sign a Pre-Authorization Agreement and either obtain a PIN or purchase one or more RSA SecurID tokens from Absolute Software.
- ²⁰ HP ePrint Driver + JetAdvantage: requires an internet connection to HP web-enabled printer and HP ePrint account registration (for a list of eligible printers, supported documents and image types and other HP ePrint details, see www.hp.com/go/eprintcenter). Print times and connection speeds may vary.
- ²¹ HP Support Assistant: requires Windows and Internet access.
- ²² Microsoft Defender: Microsoft Defender Opt in and internet connection required for updates.
- ²³ HP PhoneWise: HP PhoneWise Client is only available on select platforms. For supported platforms and HP PhoneWise system requirements see www.hp.com/go/HPPhoneWise.
- ²⁴ HP Sure Recover: is available on HP Elite PCs with 8th generation Intel® or AMD processors and requires an open, wired network connection. You must back up important files, data, photos, videos, etc. before using HP Sure Recover to avoid loss of data.
- ²⁵ HP Recovery Manager: available for a limited time on certain models.
- ²⁶ HP Management Integration Kit for Microsoft System Center Configuration Management Gen 2: HP Manageability Integration Kit can be downloaded from <http://www8.hp.com/us/en/ads/clientmanagement/overview.html>
- ²⁷ Ivanti Management Suite: subscription required.
- ²⁸ HP Client Security Suite Gen 4: requires Windows and Intel® or AMD 8th generation processors.
- ²⁹ HP Password Manager: requires Internet Explorer or Chrome or Firefox. Some websites and applications may not be supported. User may need to enable or allow the add-on / extension in the internet browser.
- ³⁰ HP Sure Start Gen 4: is available on HP EliteBook products equipped with Intel® 8th generation processors.
- ³¹ Trusted Platform Module TPM 2.0 Embedded Security Chip shipped with Windows 10 (Common Criteria EAL4+ Certified)(FIPS 140-2 Level 2 Certified): Firmware TPM is version 2.0. Hardware TPM is v1.2, which is a subset of the TPM 2.0 specification version v0.89 as implemented by Intel Platform Trust Technology (PTT).
- ³² RAID configurations: is optional and does require a second hard drive.
- ³³ HP Sure Run: is available on HP Elite products equipped with 8th generation Intel® or AMD processors.
- ³⁴ Configurable video port: choice of DisplayPort™ 1.2, 1 HDMI™ 2.0, 1 VGA or USB Type-C™ Gen 1 (DisplayPort™).

Sign up for updates

www.hp.com/go/getupdated

© Copyright 2018 HP Development Company, L.P. The information contained herein is subject to change without notice. The only warranties for HP products and services are set forth in the express warranty statements accompanying such products and services. Nothing herein should be construed as constituting an additional warranty. HP shall not be liable for technical or editorial errors or omissions contained herein.

Microsoft, Windows, and the Windows Logo are either registered trademarks or trademarks of Microsoft Corporation in the United States and/or other countries. AMD, Radeon, Ryzen, and the AMD logo and any combination thereof are registered trademarks of Advanced Micro Devices, Inc. ENERGY STAR is a registered trademark owned by the U.S. Environmental Protection Agency. USB Type-C™ and USB-C™ are trademarks of USB Implementers Forum. Adobe PDF is a trademark of Adobe Systems Incorporated. DisplayPort™ and the DisplayPort™ logo are trademarks owned by the Video Electronics Standards Association (VESA®) in the United States and other countries. Thunderbolt is a trademark of Intel Corporation or its subsidiaries in the U.S. and/or other countries. All Rights Reserved. All other trademarks are the property of their respective owners.

