



# HP 260 G3 Desktop Mini PC

Designed to fit the modern workspace with an updated and stylish appearance, the ultra-small HP 260 Desktop Mini PC delivers a space saving design with the essential tools you need for your growing business at an affordable price.



HP recommends Windows 10 Pro.

- Windows 10 Pro<sup>1</sup>
- 7th gen Intel® Core™ Processors<sup>2</sup>

## Powered up processing

- Help optimize performance for growing business needs with a 7th gen Intel® Core™ processor<sup>2</sup>, optional Intel® Optane™ memory<sup>3</sup>, up to 32GB of DDR4 memory<sup>4</sup>, and robust storage choices that include both SSDs and HDDs<sup>4</sup>.

## Small design, big versatility

- The compact design of the desktop mini, flexible mounting options<sup>4</sup>, and optional accessories<sup>4</sup> help support a versatile range of use cases from desktop to public computing to digital signage.

## Work confidently without the cost

- Get the affordably priced business ready desktop mini with the accessories<sup>4</sup> you need plus power saving processors that help consume less energy.

## Legacy compatibility

- Help control costs and continue to use your existing compatible equipment with standard support of VGA and serial ports.

## Featuring

- Help secure the future of your business. PCs from HP make the most of Windows 10 Pro to protect you from today's security threats and maximize management and productivity features for business.
- Take advantage of expandable and compatible HP mini accessories. Expand storage options, add legacy ports with expansion modules, help secure your device with security mounts, or take back your desk space with stands and work centers.
- Help protect internal components and extend the life of PCs in the most demanding work environments by reducing airborne particulate intake with an optional dust filter.
- Do more on dual displays with HDMI Port and full HD VGA ports, plus use 6 USB ports to plug in all the peripherals you need.
- Help keep your investment safe and conveniently power up your desktop mini directly from the keyboard so you don't have to open enclosures or strain for the power button when it's out of reach.
- Combine a standard hard drive and a speedy and reliable solid state drive for a powerful dual storage PC.
- Easily secure your system in a safe place. The lightweight desktop mini is easy to carry and store.
- The embedded Trusted Platform Module (TPM) provides hardware-based encryption to help secure your data and deter attacks from viruses and malware.

# HP 260 G3 Desktop Mini PC Specifications Table

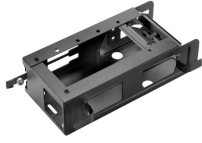


<b>Form Factor</b>	Mini
<b>Available Operating System</b>	Windows 10 Pro 64 – HP recommends Windows 10 Pro. <sup>1</sup> Windows 10 Pro 64 (National Academic only) <sup>1,2</sup> Windows 10 Home 64 <sup>1</sup> Windows 10 Home Single Language 64 <sup>1</sup> FreeDOS 2.0
<b>Processor Family</b> <sup>3</sup>	Intel® Celeron® processor (3865U is Windows 10 only); 7th Generation Intel® Core™ i5 processor (i5-7200U); 7th Generation Intel® Core™ i3 processor (i3-7130U); Intel® Pentium® processor (4415U is Windows 10 only)
<b>Available Processors</b> <sup>4,24</sup>	Intel® Celeron® 3865U with Intel® HD Graphics 610 (1.8 GHz, 2 MB cache, 2 cores); Intel® Core™ i5-7200U with Intel® HD Graphics 620 (2.5 GHz base frequency, up to 3.1 GHz with Intel® Turbo Boost Technology, 3 MB cache, 2 cores); Intel® Core™ i3-7130U with Intel® HD Graphics 620 (2.7 GHz, 3 MB cache, 2 cores); Intel® Pentium® Gold 4415U with Intel® HD Graphics 610 (2.3 GHz, 2 MB cache, 2 cores)
<b>Maximum Memory</b>	32 GB DDR4-2133 SDRAM <sup>5,6</sup> Transfer rates up to 2133 MT/s.
<b>Memory Slots</b>	2 SODIMM
<b>Internal Storage</b>	500 GB up to 1 TB 7200 rpm SATA HDD <sup>7</sup> 128 GB up to 256 GB SATA SSD <sup>7</sup> 128 GB up to 256 GB PCIe® NVMe™ M.2 SSD <sup>7</sup> 128 GB up to 256 GB PCIe® NVMe™ TLC M.2 SSD <sup>7</sup>
<b>Available Graphics</b>	Integrated: Intel® HD Graphics 610; Intel® HD Graphics 620 <sup>21</sup>
<b>Audio</b>	Conexant CX20632 codec, combo microphone/headphone jack, HD audio
<b>Expansion Slots</b>	1 M.2 2230; 1 M.2 2230/2280; 1 SATA storage connector <sup>19</sup> (1 M.2 slot for WLAN and 1 M.2 2230/2280 slot for storage.)
<b>Ports and Connectors</b>	Front: 1 headphone/microphone combo; 2 USB 3.1 Gen 1 Rear: 1 external antenna connector; 1 power connector; 1 RJ-45; 1 serial; 1 VGA; 2 USB 2.0; 2 USB 3.1 Gen 1; 1 HDMI 1.4 <sup>12,18</sup>
<b>Input Devices</b>	HP USB Conferencing Keyboard; HP USB Business Slim Standalone Wired Keyboard; Wired Standalone Keyboard <sup>9,10</sup> HP USB Hardened Mouse; HP USB Optical Mouse <sup>9,10</sup>
<b>Communications</b>	LAN: Realtek RTL8111HSH-CG GbE WLAN: Realtek RTL8822BE-CG 802.11a/b/g/n/ac (2x2) with Bluetooth® 4.1 M.2 PCIe®; Realtek RTL8821CE-CG 802.11a/b/g/n/ac (1x1) with Bluetooth® 4.2 M.2 PCIe® <sup>8</sup>
<b>Drive Bays</b>	One 2.5" HDD
<b>Available Software</b>	HP ePrint Driver + JetAdvantage; HP Hotkeys Support; HP Jumpstart; HP PhoneWise; HP Support Assistant; HP Velocity; McAfee LiveSafe™; Buy Office (sold separately) <sup>14,15,16,17,22</sup>
<b>Security Management</b>	Lock slot; Padlock loop; Trusted Platform Module (TPM) 2.0
<b>Power</b>	65 W external power adapter, up to 89% efficiency
<b>Dimensions</b>	17.7 x 17.5 x 3.4 cm
<b>Weight</b>	1.25 kg (Configured with 1 HDD only. Exact weight depends on configuration.)
<b>Environmental</b>	Low halogen <sup>20</sup>
<b>Energy Efficiency Compliance</b>	ENERGY STAR® certified; EPEAT® Silver; CEL; FCC; UL; RoHS; WEEE; TCO <sup>13</sup>

## HP 260 G3 Desktop Mini PC

### Recommended Accessories and Services

#### HP DM VESA Power Supply Holder Kit



Simplify cable management when mounting your HP Desktop Mini with the HP DM VESA Power Supply Holder Kit, which attaches to your HP Desktop Mini Security/Dual VESA Sleeve v2 (2JA32AA) to reduce cable clutter from the PC's power supply cable and brick.

**Product number: 1RL87AA**

#### HP Desktop Mini Security/Dual VESA Sleeve v2



Wrap your HP Desktop Mini PC in the HP Desktop Mini Security/Dual VESA Sleeve v2 to securely mount it—with or without an Expansion Module<sup>1</sup>—behind your display, position the solution on a wall, and lock it down with the integrated security bracket and optional HP Ultra-Slim Cable Lock.

**Product number: 2JA32AA**

#### HP Quick Release Bracket



A secure and easy-to-use mounting solution for your VESA-compliant HP thin clients, compatible HP flat panel monitors and other HP desktop products. Attach to any a compatible stand, bracket or wall mount and make the most of your workspace.

**Product number: EM870AA**

#### HP Desktop Mini DVD ODD Module



Add a DVD Writer to your HP Desktop Mini PC with HP Desktop Mini DVD Writer ODD Module.<sup>1</sup>

**Product number: K9Q83AA**

#### HP 3-year Next Business Day Onsite Optional Customer Self Repair Desktop/Workstation Only Hardware Service



Receive 3 years of next business day onsite repair from an HP-qualified technician for your computing device, if the issue cannot be solved remotely. For more information on Care Pack services, please visit [www.hp.com/go/cpc](http://www.hp.com/go/cpc).

**Product number: UE379E**

## Messaging Footnotes

- <sup>1</sup> Not all features are available in all editions or versions of Windows. Systems may require upgraded and/or separately purchased hardware, drivers and/or software to take full advantage of Windows functionality. Windows 10 is automatically updated, which is always enabled. ISP fees may apply and additional requirements may apply over time for updates. See <http://www.windows.com/>
- <sup>2</sup> Multicore is designed to improve performance of certain software products. Not all customers or software applications will necessarily benefit from use of this technology. Performance and clock frequency will vary depending on application workload and your hardware and software configurations. Intel's numbering, branding and/or naming is not a measurement of higher performance.
- <sup>3</sup> Intel® Optane™ memory system acceleration does not replace or increase the DRAM in your system and requires configuration with an optional Intel® Core™ (i5 or 7)+ processor.
- <sup>4</sup> Sold separately or as optional features.

## Technical Specifications Footnotes

- <sup>1</sup> Not all features are available in all editions or versions of Windows. Systems may require upgraded and/or separately purchased hardware, drivers, software or BIOS update to take full advantage of Windows functionality. Windows 10 is automatically updated, which is always enabled. ISP fees may apply and additional requirements may apply over time for updates. See <http://www.windows.com/>
- <sup>2</sup> Some devices for academic use will automatically be updated to Windows 10 Pro Education with the Windows 10 Anniversary Update. Features vary; see <https://aka.ms/ProEducation> for Windows 10 Pro Education feature information.
- <sup>3</sup> NOTE: Your product does not support Windows 8 or Windows 7 in accordance with Microsoft's support policy, HP does not support the Windows 8 or Windows 7 operating system on products configured with Intel® and AMD 7th generation and forward processors or provide any Windows 8 or Windows 7 drivers on <http://www.support.hp.com>.
- <sup>4</sup> Multicore is designed to improve performance of certain software products. Not all customers or software applications will necessarily benefit from use of this technology. Performance and clock frequency will vary depending on application workload and your hardware and software configurations. Intel's numbering, branding and/or naming is not a measurement of higher performance.
- <sup>5</sup> For systems configured with more than 3 GB of memory and a 32-bit operating system, all memory may not be available due to system resource requirements. Addressing memory above 4 GB requires a 64-bit operating system. Memory modules support data transfer rates up to 2133 MT/s; actual data rate is determined by the system's configured processor. See processor specifications for supported memory data rate.
- <sup>6</sup> All memory slots are customer accessible / upgradeable.
- <sup>7</sup> For hard drives and solid state drives, GB = 1 billion bytes. TB = 1 trillion bytes. Actual formatted capacity is less. Up to 36 GB (for Windows 10) of system disk is reserved for the system recovery software.
- <sup>8</sup> Wireless access point and internet service required.
- <sup>9</sup> Availability may vary by country.
- <sup>10</sup> Sold separately or as an optional feature.
- <sup>12</sup> (1) external antenna connector: Must be configured at time of purchase.
- <sup>13</sup> EPEAT® registered where applicable. EPEAT registration varies by country. See [www.epeat.net](http://www.epeat.net) for registration status by country. See HP's 3rd party option store for solar energy accessory at [www.hp.com/go/options](http://www.hp.com/go/options).
- <sup>14</sup> HP ePrint Driver requires an Internet connection to HP web-enabled printer and HP ePrint account registration (for a list of eligible printers, supported documents and image types and other HP ePrint details, see [www.hp.com/go/eprintcenter](http://www.hp.com/go/eprintcenter)). Print times and connection speeds may vary.
- <sup>15</sup> HP PhoneWise Client is only available on select platforms. For supported platforms and HP PhoneWise system requirements see [www.hp.com/go/HPPhoneWise](http://www.hp.com/go/HPPhoneWise).
- <sup>16</sup> HP Support Assistant requires Windows and Internet access.
- <sup>17</sup> McAfee LiveSafe™: 1 year subscription. Availability may vary by country.
- <sup>18</sup> (1) USB 2.0 port: Supporting wake from S4/S5 with keyboard/mouse connected and enabled in BIOS.
- <sup>19</sup> For Desktop Mini with M.2 Storage configuration, there will be no SATA drive bracket. If you require or will upgrade the storage with any 2.5" SATA drive, please select a DM 35W SATA Drive Bracket.
- <sup>20</sup> External power supplies, power cords, cables and peripherals are not Low Halogen. Service parts obtained after purchase may not be Low Halogen.
- <sup>21</sup> Intel® integrated HD Graphics varies by processor.
- <sup>22</sup> HP Velocity: Availability may vary by country.
- <sup>23</sup> Chipset is integrated with processor.
- <sup>24</sup> Intel® Turbo Boost technology requires a PC with a processor with Intel Turbo Boost capability. Intel Turbo Boost performance varies depending on hardware, software and overall system configuration. See [www.intel.com/technology/turboboost](http://www.intel.com/technology/turboboost) for more information.

**Sign up for updates**  
[hp.com/go/getupdated](http://hp.com/go/getupdated)

© Copyright 2018 HP Development Company, L.P. The information contained herein is subject to change without notice. The only warranties for HP products and services are set forth in the express warranty statements accompanying such products and services. Nothing herein should be construed as constituting an additional warranty. HP shall not be liable for technical or editorial errors or omissions contained herein.

Bluetooth is a trademark of its proprietor and used by HP Inc. under license. Intel, Core and Intel vPro are trademarks of Intel Corporation or its subsidiaries in the U.S. and/or other countries. NVIDIA, the NVIDIA logo, and GeForce are trademarks and/or registered trademarks of NVIDIA Corporation in the U.S. and other countries. USB Type-C™ and USB-C™ are trademarks of USB Implementers Forum. ENERGY STAR is a registered trademark of the U.S. Environmental Protection Agency. All other trademarks are the property of their respective owners.

