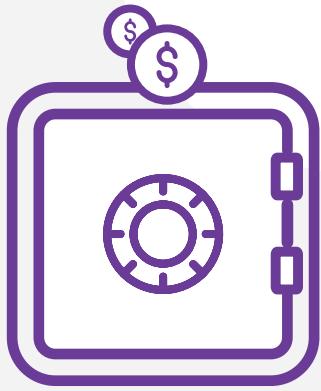
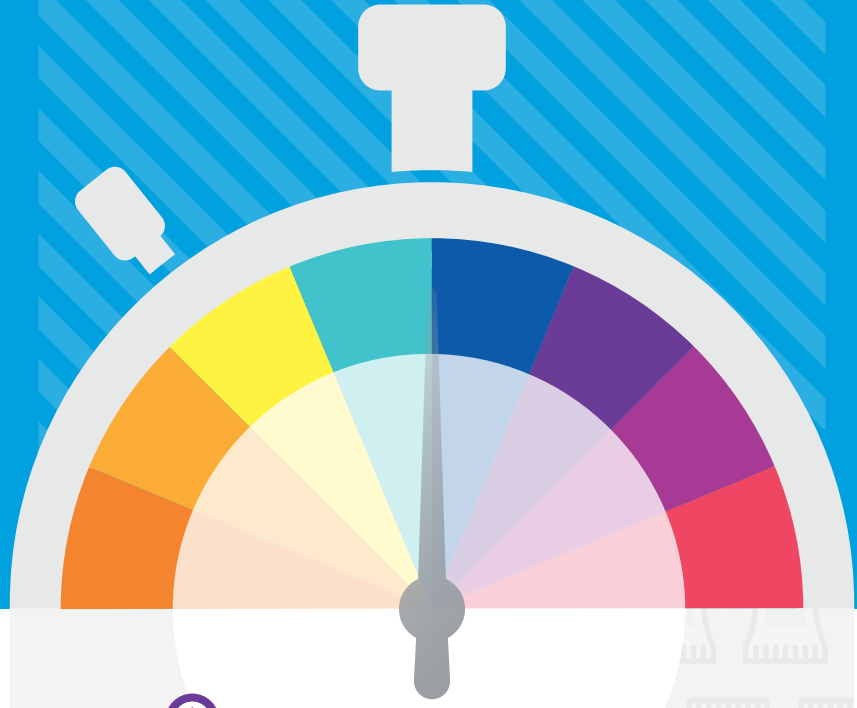


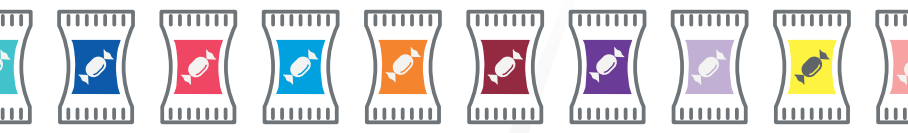
# DONE in 8 hours



Cost saved

## \$8000

\*not including materials waste cost



### 20

DIFFERENT SKUs

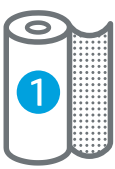
1 GRAPHIC = 4 PLATES | 1 PLATE = \$100

80 PLATES COST SAVED = \$8,000



Time saved

## 3 hours



### 3

SUBSTRATES CHANGEOVERS

SINGLE CHANGEOVER AND SETUP = 1 HOUR

3 CHANGEOVERS = 3 HOURS



Curing time saved

## 1 to 5 days

# LAYERS CURED



ZERO CURE TIME WITH PACK READY LAMINATION, ENABLES IMMEDIATE TIME TO MARKET.

2 Layers

minimum average

3 Layers

minimum average

0h 24h 48h 72h 96h 120h



## 1-of-a-kind

pouches with unique features



## 42,998

HIGH VALUE POUCHES

HIGH VALUE APPLICATIONS SUCH AS: BRAND PROTECTION ELEMENTS, MOSAIC, VARIABLE DATA, WEB2PRINT, 1-OF-A-KIND

## SAY YES to more jobs!





# HP INDIGO 20000 DIGITAL PRESS

## Specifications

Printing speed	101 ft/min in 4-color mode; 135 ft/min in EPM; 82 ft/min in 5-color mode; 16,307 sq. feet per hour when printing wallpaper
Image resolution	812 dpi at 8 bit, addressability: 2438 x 2438 dpi HDI (High Definition Imaging)
Line screens	175, 180, 180m, HMF-200
Image size	29 x 43 in maximum; Repeat length: 21.6 in minimum, 43 in maximum
Substrate thickness	0.4 to 10 pt.
Substrate type	Film (PET, BOPP, PE, BOPA), shrink film (PETG, PVC, OPS) label stock (PE label), pre-laminates (PET/ALU/PE) and paper.
Web width	Maximum width: 30 in / Minimum width: 15.7 in
Priming unwinder	Max roll diameter: 39.4 in Max roll weight: 1870 lb Core inside diameter: • Standard 6 in adapter • Optional 3 in
Rewinder	Maximum roll diameter: 31.5 in. Additional option for reduced rewinder tension Maximum roll weight: 1540 lb. Additional option for reduced rewinder tension
Print server	HP SmartStream Labels and Packaging Print Server, Powered by Esko
Cloud connectivity	Via HP PrintOS
Press dimensions	Width: 383 in; Height: 94 in; Depth: 185 in
Press weight	33,000 lb
HP Indigo ElectroInks	
Standard 4-color printing	Cyan, magenta, yellow, and black
Additional process inks	White, white for sleeves, premium white
PANTONE® colors	Supports PANTONE PLUS®, PANTONE MATCHING SYSTEM®, and PANTONE Goe™ HP Professional PANTONE Emulation Technology using CMYK on-press; HP IndiChrome on-press; HP IndiChrome Plus on-press; HP IndiChrome Ink Mixing Service for achieving up to 97% of the PANTONE® color range.
Enhanced Productivity Mode	Enables three-color EPM printing
Options	
Reinsertion	Simplex
Extended inspection capabilities	Reverse Inspection Bridge (RIB)
Slitter	Optional kit for inline slitting



## PACK READY LAMINATION

Fast time to Market with HP Indigo Pack Ready lamination solution:

## Non-adhesive solution provides 6 key values

### Operational



**Minimal waste**  
Minimal material waste at job change over



**Easy to use**  
Easy to learn, operate and maintain



**Zero cure time**  
Slit inline, immediately processing pouch enabling real time to market

### Performance



**Strong bond**  
Immediate and long-lasting bond

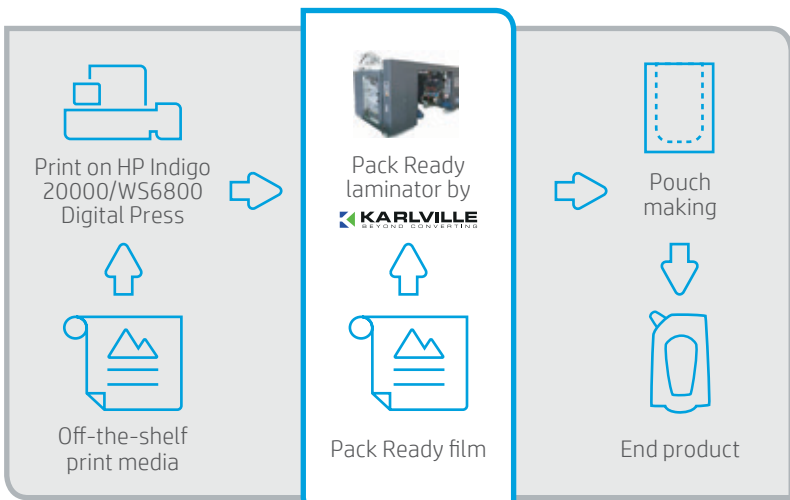


**Better at finishing of pouch**  
It improves physical property of HP indigo print output for aggressive heat seal

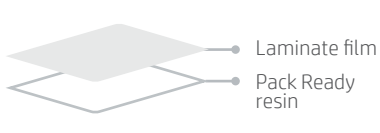


**Food safety**  
Direct food contact grade film

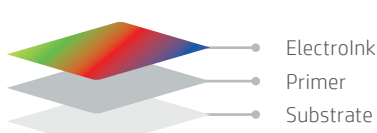
## Pack Ready lamination structure



### Pack Ready film



### Printed film



**PRINT ANYTHING**  
Any Package, Any Job, Any run length.



**BE PRODUCTIVE**  
To fulfill more jobs a day with minimal waste.



**STAND OUT**  
By relying on Indigo's renowned print quality.