

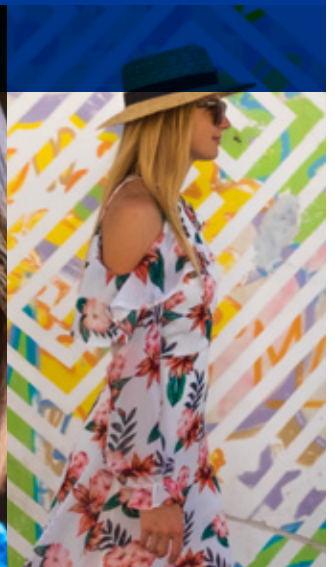


# HP SERVICE EDGE

FUEL YOUR SUCCESS WITH CONFIDENCE

TURN COLOR TO  
YOUR ADVANTAGE

COLOR KNOWLEDGE AND SKILLSET



Color is critical in your line of work. But getting it just right isn't always easy. Give your operators the right tools, knowledge, and assistance. Empower them through the HP Service Edge.

Turn color to your advantage, from day one, with color management services<sup>1</sup> designed specifically for you. Whether you need to reproduce target colors from old devices or match colors across your fleet, HP can provide color experts and onsite training to ensure you get the right color from the very first job.

It's all about standing out with color, helping to meet your client's demands for accuracy and consistency and your business's goals for efficiency and growth.



## EXCEL IN COLOR

Designed to simplify your operation, the HP Stitch S series solution makes color easy, with **Advanced Professional Color Services**<sup>1,2</sup> providing professional experts who know what it takes to make color work for textiles.

- **Quickly ramp up, producing your target colors.** Our experts match your clients' target colors from previous jobs by reproducing colors from your old devices on your new HP Stitch S series printers.
- **Get the perfect color from day one with a little help from our experts.** From an initial assessment of your specific print environment and unique requirements to full integration of your new HP Stitch S series printers, our experts are there to get the color just right from the first job.

## ENHANCE YOUR EXPERTISE

Empower your team with **HP Color Management Trainings** from basic eLearning to a complete introduction of color management concepts. Address your clients' color accuracy needs on your own, and learn how you can reduce time and media waste from trial-and-error testing.

- **Start with the basics.** To get started managing color on your HP Stitch S series printer, look to our free introductory Color Management Training,<sup>1</sup> provided through convenient eLearning in less than one hour.
- **Take the next step into efficient color management.** Learn how to improve your color management skills with theory and hands-on training at your site or at HP training facilities.<sup>1</sup>

**KNOWLEDGE IS POWERFUL AND, POTENTIALLY, PROFITABLE.  
EXPAND YOUR COLOR SKILLS TODAY WITH COLOR MANAGEMENT  
SERVICES FROM THE HP SERVICE EDGE.**

<sup>1</sup> Depends on printer, service contract, and regional availability. HP Professional Color Services provide an end-to-end service experience managed by HP. Individual services may be provided by HP or an HP-certified partner.

<sup>2</sup> The final outcome of this service is based on ideal conditions and proper use of the printer. It depends on a variety of factors and circumstances not necessarily related to printer performance, such as technical conditions, environmental conditions, and the materials and supplies used.

Learn more at  
[hp.com/go/latexservice](http://hp.com/go/latexservice)

