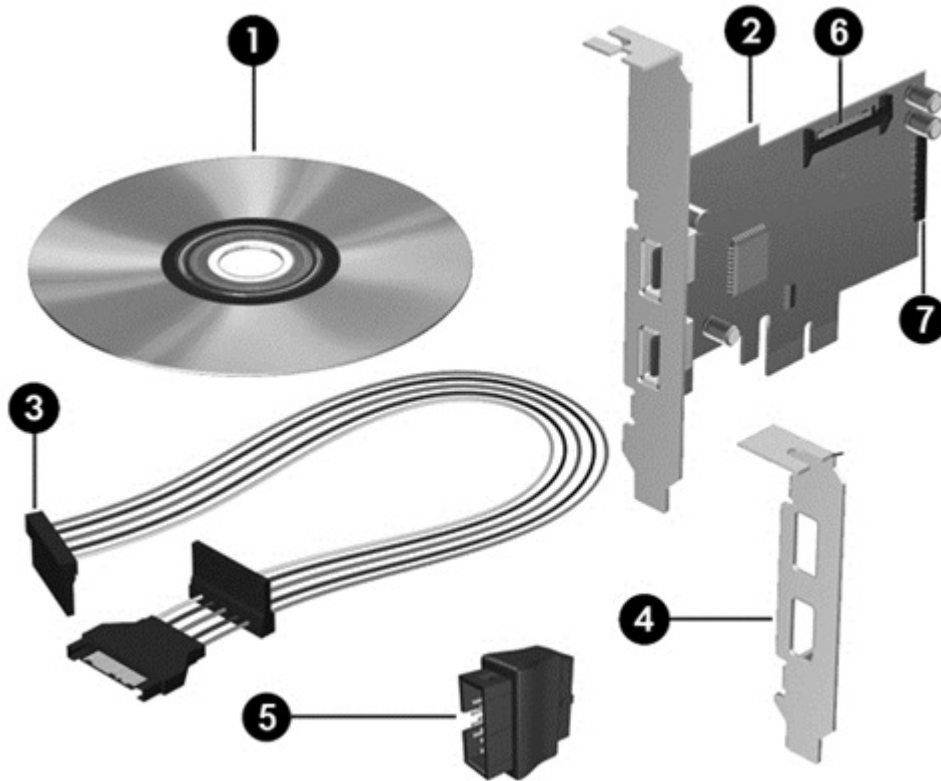


Overview



1. I/O and Security Software and Documentation CD with software drivers and documentation
2. HP USB 3.0 2x2 Port SuperSpeed PCIe x1 Card (with full-height expansion bracket attached)
3. SATA to SATA split power extension cable
4. Low profile expansion bracket to replace the full-height expansion bracket required on some computer models
5. USB 3.0 to USB 2.x/1.x adapter
6. SATA power connector
7. 20-pin internal connector to internal USB devices (supports 2 internal USB 3.0 ports)

Models

HP USB 3.0 2x2 Port SuperSpeed PCIe x1 Card

QT587AA

Overview

Introduction

HP USB 3.0 2x2 Port SuperSpeed PCIe x1 Card provides increased data transfer and greater bandwidth to USB devices connected to your computer. The card is capable of the following:

- USB 3.0 interface with up to 5 Gbps data transfer rate – up to 10 times faster than USB 2.0 - and is capable of superior performance to transfer high definition content such as video and media players
- Backwards compatible with any existing USB devices
- Includes 4 USB 3.0 ports – 2 external ports and 2 internal ports
- Includes a USB 3.0 to USB 2.x/1.x adapter
- Fits conveniently in a half-height or full-height expansion slot in the computer with convenient half-height bracket as well as the default full-height bracket

NOTE: For optimal performance (up to 5 GHz), install this card in a PCIe 2.0 slot. Installing it in a PCIe 1.0 slot could cause the card to run at a reduced 2.5 GHz throughput.

Key Benefits

- HP USB 3.0 2x2 Port SuperSpeed PCIe x1 Card has a 5 Gbps signaling rate and can provide up to a 10x performance increase over Hi-Speed USB 2.0
 - HP Super Speed USB is a Sync-N-Go technology that minimizes user wait-time
 - HP USB 3.0 2x2 Port SuperSpeed PCIe x1 Card will provide Optimized Power Efficiency. No device polling and lower active and idle power requirements
 - HP USB 3.0 2x2 Port SuperSpeed PCIe x1 Card is backwards compatible with USB 2.0. Devices interoperate with USB 2.0 platforms. Hosts support USB 2.0 legacy devices
-

Compatibility

Because the HP USB 3.0 2x2 Port SuperSpeed PCIe x1 Card is backwards compatible with USB 2.0 devices, and since it also fits conveniently in a half-height or full height expansion slot, it is compatible with many HP Desktop PCs including HP Compaq 6000 Pro MT, HP Compaq 6000 Pro SFF, HP Compaq 4300 Pro SFF, HP Compaq 6005 Pro MT, HP Compaq 6005 Pro SFF, HP Compaq 6005 Pro USDT, HP Compaq 6200 Pro MT, HP Compaq 6200 Pro SFF, HP Compaq 6300 Pro MT, HP Compaq 6300 Pro SFF, HP Compaq 8200 Elite SFF, HP Compaq 8200 Elite CMT, HP Compaq 8200 Elite MT, HP Compaq 8200 Elite USDT, HP Compaq 8300 Elite MT, HP Compaq 8300 Elite CMT, HP Compaq 6305 Pro MT, and HP Compaq 6305 Pro SFF. Compatible HP Workstations include the HP Z210 CMT, HP Z210 SFF, HP Z400, HP Z420, HP Z600, HP Z620, HP Z800, and HP Z820.

NOTE: Please check this product's web page on HP.com for current compatibility information.

NOTE: Not all models are available in all regions.

Service and Support

The HP USB 3.0 2x2 Port SuperSpeed PCIe x1 Card has either a one-year limited warranty or the remainder of the warranty of the HP product in which it is installed. Technical support is available seven days a week, 24 hours a day, by phone, as well as online support forums. Certain restrictions and exclusions apply.

Technical Specifications

Dimensions (H x W)	Full-height	104.89 (+/- 0.25) x 59.04 (+/- 0.25) mm
	Low profile	68.09 (+/- 0.25) x 59.04 (+/- 0.25) mm
Weight		0.11 lb (49 g)
Ports		2 External, 2 internal
Operating systems supported		Microsoft Windows 7, Windows Vista*, Windows XP Professional (32-bit and 64-bit); Red Hat Enterprise Linux 6, SUSE Linux Enterprise Desktop 11 Certain Windows Vista product features require advanced or additional hardware. Windows Vista Upgrade Advisor can help you determine which features of Windows Vista will run on your computer. To download the tool, visit: http://www.windowsvista.com/upgradeadvisor . For Windows Vista system requirements, visit: http://www.windowsvista.com/systemrequirements .
Agency approvals and certifications		FCC 15B, CE EN55022+ EN55024, VCCI, CISPR 22 AS/NZS CISPR 22, LCIE CB service(ITE/AV) IEC 60950-1, Korea EMC, UL, USB-IF, Microsoft WHQL
Kit contents		I/O and Security Software and Documentation CD with software drivers and documentation, HP USB 3.0 2x2 Port SuperSpeed PCIe x1 Card with full-height expansion bracket attached), SATA to SATA split power extension cable, Low profile expansion bracket to replace the full-height expansion bracket required on some computer models and HP USB 3.0 2x2 Port SuperSpeed PCIe x1 Card Quick Setup

© Copyright 2013 Hewlett-Packard Development Company, L.P. The information contained herein is subject to change without notice.

Microsoft, Windows, and Windows Vista are either trademarks or registered trademarks of Microsoft Corporation in the United States and/or other countries.

The only warranties for HP products and services are set forth in the express warranty statements accompanying such products and services. Nothing herein should be construed as constituting an additional warranty. HP shall not be liable for technical or editorial errors or omissions contained herein.