

# A POWERFUL AND EASY-TO-USE PRINTING SOLUTION PRE-INSTALLED ON A MAC MINI



## Features :

- Adobe PDF Print Engine for smooth shadow and gradient printing
- Advanced tiling , nesting and layout features
- Enhanced cut workflow
- Fully modular and scalable architecture
- Powerful ICC color calibration engine
- Incorporates spot color matching and market leading color libraries

Developed for medium-to high-production, multiple device environments.

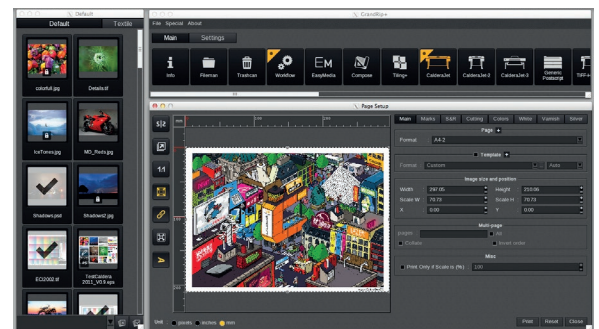
The new Caldera bundle includes industry award winning **VisualRIP+** software and one print driver.

## VisualRIP+

Built for speed, reliability and flexibility, our solutions represent the cutting edge of wide-format production software, supporting all popular large-format print manufacturers.

Incorporating key features such as automatic nesting (both true shape and regular), advanced tiling, ICC color support and task automation, Caldera is a powerful tool for print operators looking to streamline their production across multiple devices, while simultaneously achieving consistent color output and saving ink and media on all their prints.

Our industry award winning solution for Print-and-Cut Workflow, **VisualRIP+** is the preferred choice of some of the most successful print shops around the world.



# WHAT'S IN THE BOX?

## FEATURES

Printer Control Type  
Printer Set-up  
Cut workflow capability  
Print/Production Volume  
Printer Formats  
Inkjet Types

### Applications

### PDF WORKFLOW

Adobe PDF Print Engine 3.7 

### PRODUCTIVITY

Multitask Environment  
RIP & Print while you Print  
HQ Preview  
Step & Repeat  
Tiling+  
SignMark  
Layout and Compose  
VisualUser  
VisualRemote

### COLOR MANAGEMENT

ICC Support  
Spot Color matching & White Ink  
EasyMedia  
Color Libraries (Pantone, HKS, RAL, NCS)  
Online Standard Color Profile Library  
Custom InkSet

### AUTOMATION

Task Automation  
Hot Folders  
Nest-O-Matik  
QuickPrints

### CUT WORKFLOW

Cut Marks  
Contour Nesting  
VisualCut  
GrandCut  
Trim-O-Matik

### PRODUCTION OPTIMIZATION

QR Codes  
PrintBoard  
CostProof  
CostView  
InkPerformer

### QUALITY MONITORING

Print Standard Verifier (FOGRA)  
Print Standard Verifier (G7)

## VISUAL

Direct  
Multiple devices  
Roll Cutter  
Mid to High  
Roll-to-Roll  
Acqueous, Eco-Solvent, Solvent,  
Latex, UV, Dye-sub  
Signs, Digital Graphics & Visual  
Communications, Textile Printing



\* Special editions have specific content

## CONTACT US!

FREE CALDERA EVALUATION VERSIONS ARE AVAILABLE ON OUR WEBSITE:

Demonet : <http://demonet.caldera.com>



WATCH OUR VIDEOS ON CALDERA TV!  
Caldera TV : <http://caldera.tv>

# MASTER-SLAVE ARCHITECTURE

With Caldera's Primary-Replica architecture, a single master RIP computer (Mac or PC) can manage unlimited RIP or printing replica devices for scalable distributed computing over a network. Caldera is a scalable RIP solution to drive all the printers and cutters on your network.

## USER BENEFITS

- Consolidates control to a single platform
- Reduces training time and confusion
- Increases throughput and color homogeneity
- Purchase one update for all machines
- Cost-efficient

# COLOR MANAGEMENT

Caldera's color solutions give you high quality, 'on the mark' output. Our software packages include an easy and powerful color management solution based on standard ICC technology.

## Calibrate your print configuration for superb color precision

Our **EasyMedia** step-by-step wizard allows you to specify the color gamut for any print configuration with a given media in no time at all. Thanks to the simple steps in **EasyMedia** to calibrate transition, linearization and ink use, printers can fine-tune their color processing for optimum stability and consistency across their output.

- Create your ICC profiles
- Download profiles from our online library

# CUT WORKFLOW

Caldera's **Cut Workflow** drives the industry's best cutters, whether contour or XY devices.

- Ensures precision cutting for your Cut Workflow
- Manages multiple contours in one file
- Generates a machine-specific file for each individual job
- Automatically sets up cut marks for specific devices
- Guides the cutter along a document's embedded contours
- Optimize your media usage with true shape nesting



## SYSTEM REQUIREMENTS

Linux  and Mac  are the operating systems chosen by Caldera for optimal resource management and quality workflow.