

Printer Design Accessibility

Samsung Printer Design Identity Strategy for Accessibility (v1.0)

Jan. 2015

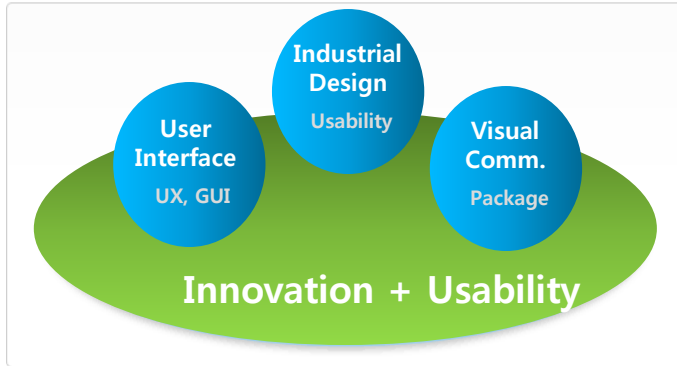
Design Group
Printing Solutions Business

Design Vision

Confidential

● Vision : Human-Centered Design

Approach to 'Human-Centered Design' from the standpoints of usability, harmony with the environment, and benefit to customers.



“Innovation” and “Usability” are the two most essential elements of Samsung Printer design. “Usability” always comes first when we design products. Therefore, it greatly influences product development. As for “Evolution,” we create designs that can maximize convenience for customers. Samsung provides **Total Design by integrating “Innovation” and “Usability.”**

Total Design to provide better usability consists of “Industrial Design,” “User Interface” and “Graphic Design.” In Total Design, we design the following items: easy-to-open packing boxes, easy-to-use handles inside a machine, graphics in operating instructions, and user-friendly software. Even when the shape of a product must be changed to introduce an advanced feature, we never sacrifice usability for functionality but create a design that ensures usability and the provision of features.

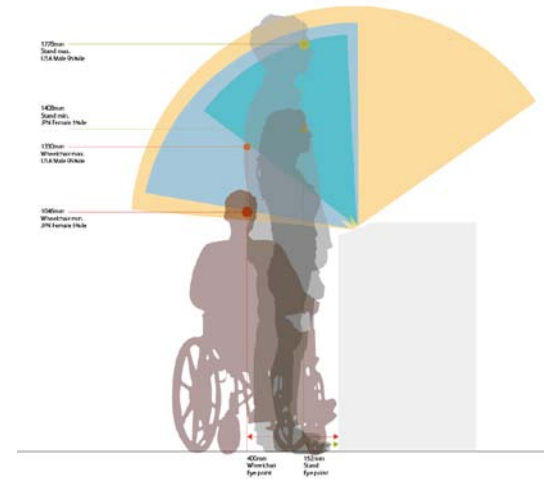


Accessibility – PUI

Variable Angle Operation Panel

The operation panel angle can be adjusted from 15~90 degrees to fit the user's optimal eye level. Users on the wheelchair can also operate the panel from the sitting position.

The operation panel can be pivoted easily from the portrait to landscape direction and vice versa, which allows easy and efficient editing of documents of various sizes.



Accessibility – PUI

Thoughtful ADF Design

The two document guides on the ADF are interlocked for easy adjustment and they can be controlled very lightly.

The guide for document alignment lies on the upper and the left side of the scanner and it allows the user to easily fix the document in place.

The ADF stays still at any angle when opened to scan a document, so the user doesn't have to hold it open with the hands.



Accessibility – PUI

Easy Current Position of Document

Dark color was applied to the part where the document is inserted in and out to help users easily recognize the current position of the paper. The position of the information on the document guide is visible to all users; from users with short height to those on wheelchairs.

The engrave of the text 'Max' where the document is inserted considers for visually impaired users because the word can be read by touching.



Multi Purpose Working Table

A table can be attached as an option for various purposes like placing documents while using the product.



Accessibility – PUI

Easy Accessible Handle

The paper cassette is designed to be held by hand from both the lower and upper directions for easy accessibility. This design helps provide a satisfying usage for users with hand disabilities, or users on wheelchairs. Little strength and effort is required to open the cassette, and its Auto Closing function considers the user's convenience.



Accessibility – PUI

Easy to Maintenance

The handle for replacing equipment with one hand is attached to the toner cartridges and waste toner box.

Handle for the replacement is designed in enough size for usage of hand disabilities.



There is enough space in ADF handle, output tray, and jam trouble cover for better usage and maintenance.

Accessibility – PUI

Consideration of User's Control Part

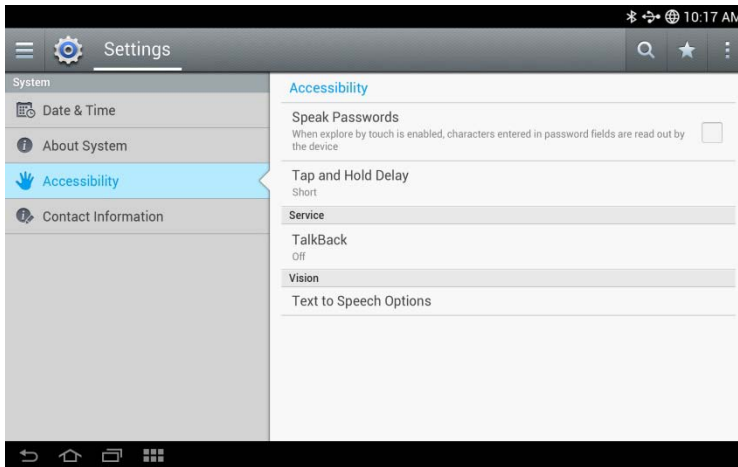
The handles operated in cases of removing paper jam and equipment replacement are expressed in green color to help users notice them easily.

The color of the toner cartridges are clearly indicated at the entrance where the cartridges are inserted for easy recognition. All the insert holes are designed in different shapes to prevent users from placing wrong toner cartridges.





TalkBack for Visually Impaired



By reading aloud what is displayed on your screen, TalkBack gives you much better accessibility to the content. When you select any feature on the display, TalkBack will tell which one it is.

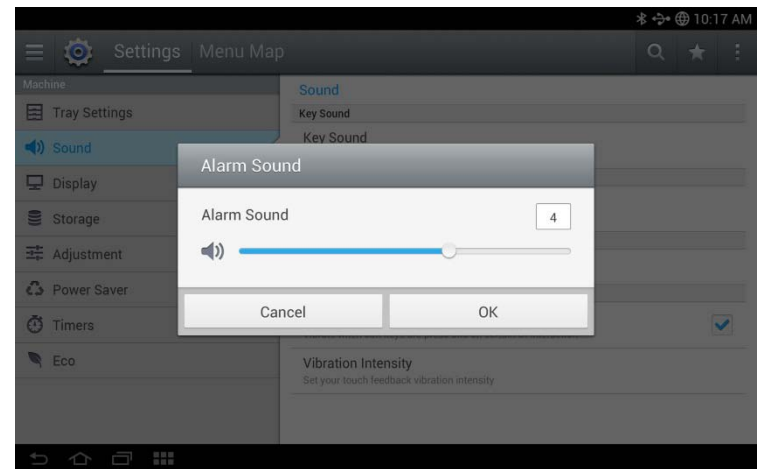
Accessibility – Smart UX Center

Confidential



Sound Adjustment for Hearing Impaired

The sound adjustment is useful to quickly lower or raise the volume for informing any alarms, incoming faxes, etc.

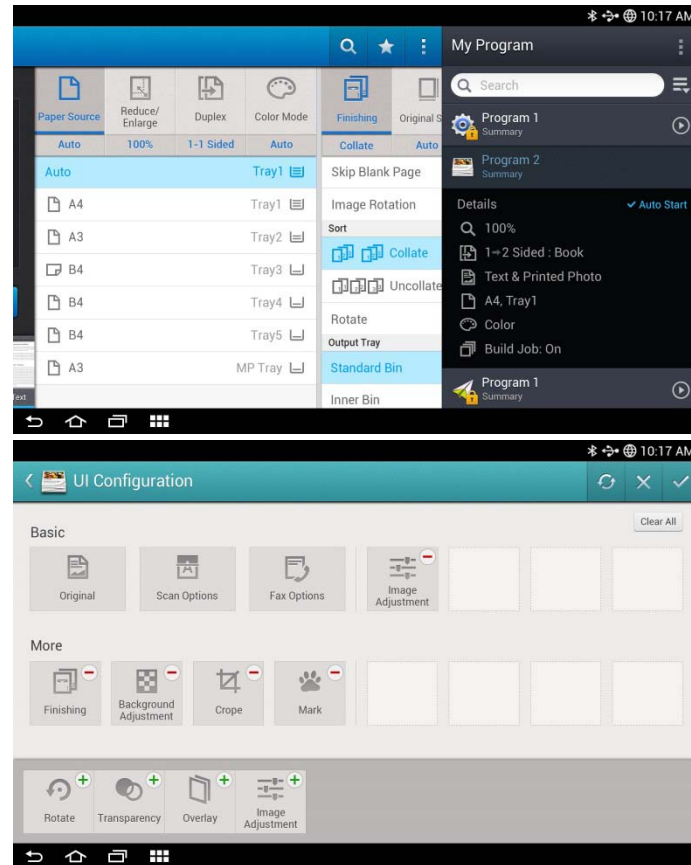
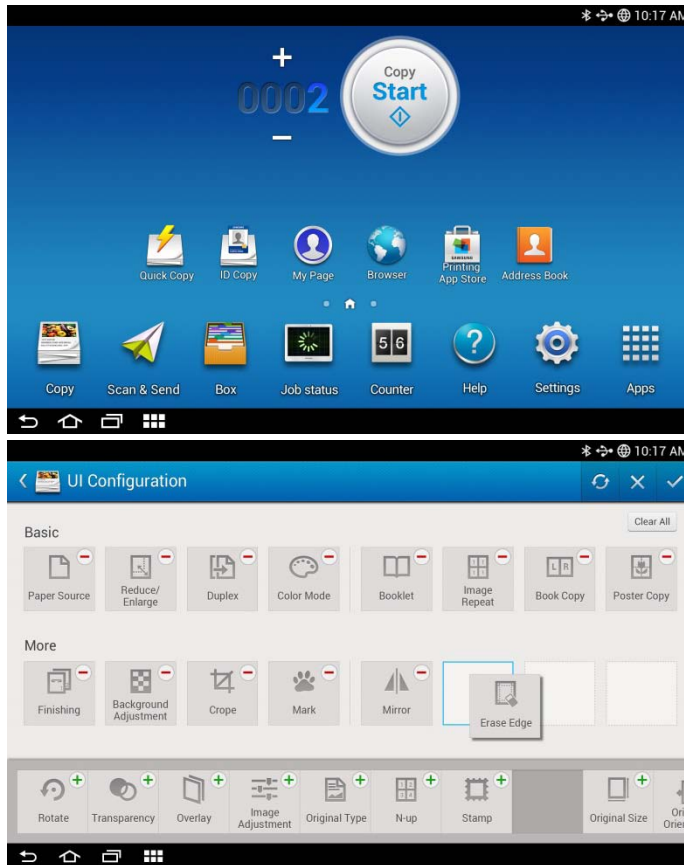


Accessibility – Smart UX Center

Confidential

Customizable Menu & One-touch Operation

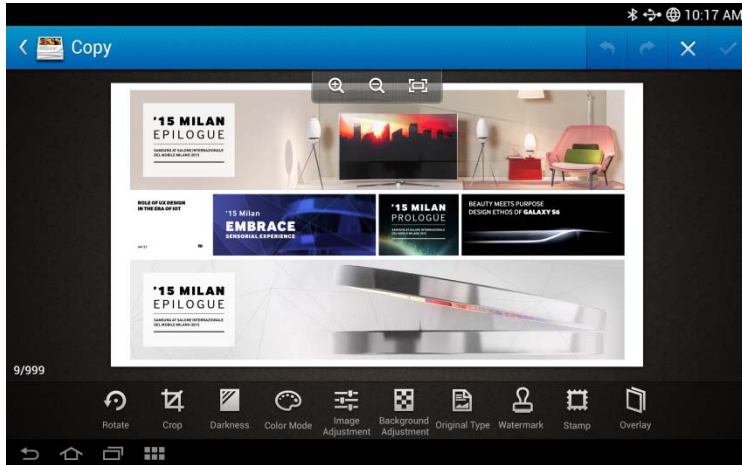
The touch-panel can be customized to help make popular features easier to find. This helps to simplify key operations and improve productivity. Combinations of settings can be registered as a single button on the touch-panel with Program feature. This can help reduce workload when used for common settings. Customized menus can be linked to individual users.



Accessibility – Smart UX Center

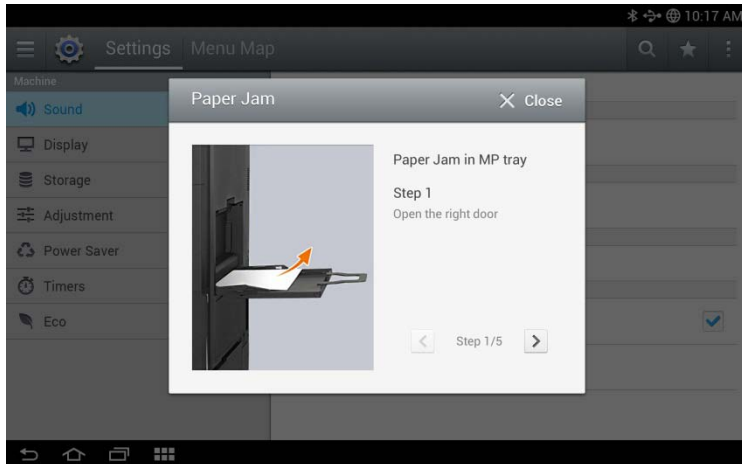
Confidential

Preview



You can check your document in full size through the Preview feature, which reduces your efforts of re-work.

Animated Help

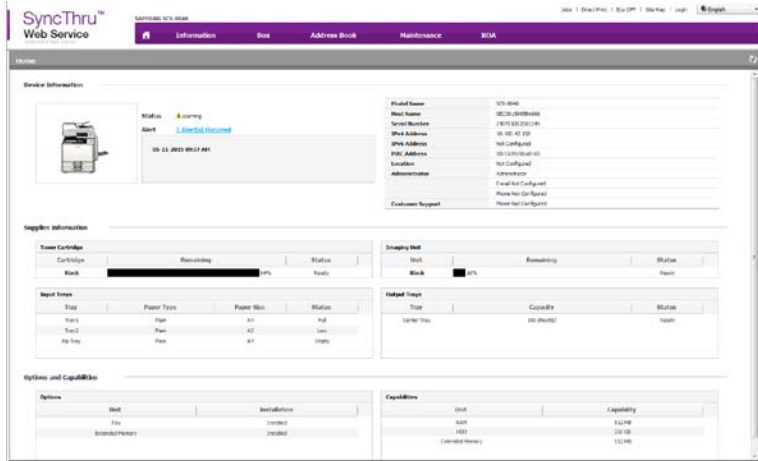


Removing jammed paper or replacing consumables can be accomplished by following the animated help guide on the screen. You do not have to memorize procedures.

Accessibility – Smart UX Center

Confidential

Remote UI



By using a standard web browser, any authorized user can easily check information such as job progress and remaining toner and paper, register destinations, and change any settings, spending less time at the device.

Remote Operator's Software



The touch-screen panel can be emulated on a computer screen. This allows any authorized user with limited mobility to access and operate all system functions from anywhere via a network-connected computer.

The end of Document

SAMSUNG Printing Solutions Design Group