



Save money and everyone's effort with a helpful, valuable, and intelligent Samsung Universal Print Driver

One can do it all: dramatically reduce the number of printer drivers on your system

If you find it difficult to use the “right purpose” device from among a lot of printers throughout your organization, a single-driver may be the solution you are looking for. When you want to use a printer, you have to install the driver for that particular printer. If you want to use different printers in different situations, you have to install multiple drivers: one for each printer. With the single-driver solution, you can replace all of those cumbersome drivers with one.

Install a single driver to multiple clients in a single operation saves time, money, and IT resources

Samsung Universal Print Driver can also be an excellent choice from a management perspective. Samsung Universal Print Driver is optimized with Easy Deployment Manager (EDM), which is a fleet management system of multiple client devices and computers. By utilizing the EDM program, you, as an administrator, can install Universal Print Driver to multiple client computers, and make your own installation packages for distribution. Installation packages can consist of driver configuration files and/or applications (e.g., SmartPanel).

Intuitive status information makes everyone happier

Samsung's Universal Print Driver provides the most powerful usability with smart interfaces and features. The small thumbnail images in the first column of the printer list

attract users' attention and make them recognize intuitively which is which. Then users can easily select the printers by their names, addresses, locations, and/or consumables' status. It also lets you change the printer's settings or order supplies from the status panel.

Smart folder removes troublesome setting

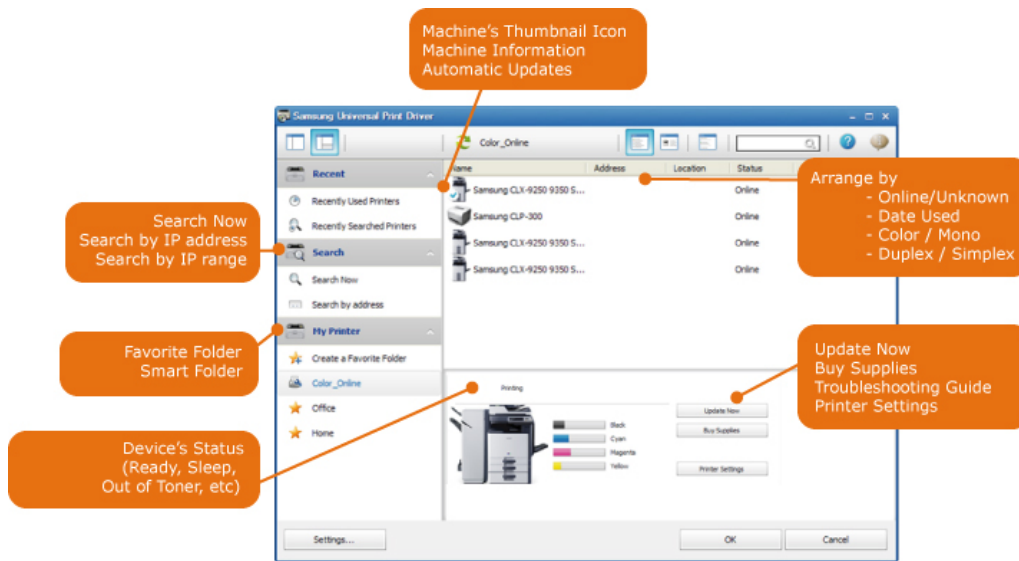
Samsung's Universal Print Driver provides the favorite folder feature. You can create a folder with the printers you use the most for your convenience. For example, if you travel between home and work sites, you can create two different printer folders, Home and Work, and manage the printers as needed. To complete the benefits, Samsung's Universal Print Driver added a dynamic smart folder. The smart folder, which is installed with a filtering system, allows you to browse the entries you need. Change conditions and watch the entries list update that very moment. It is simple - and it is accurate.

Automatic updates for keeping an up-to-date driver

When you select a Samsung product that is newly added in your printer list, the current driver may not support the new one. All you need to do to update is click twice. The automatic update feature guides you in keeping your print driver up to date.

IP Searching and Filtering make it easier to connect to the printers in the extensive network environment

To search printers in the network environment, you can use 3 different methods: search now, search by IP address, or search by IP range. In most cases, you just click and find all printers on the network with the “search now” feature. But you also can search by a specific IP address or IP range in specific cases.



Important features		Samsung Universal Print Driver 2.01	Xerox Mobile Express Driver 5.152	Ricoh Driver for Universal Print 3.1	HP Universal Printing 4.7
Various Print Languages	PCL6	○	○ ¹	○	○
	PostScript	○	○	○	○
	GDI (host-based)	○	X	X	X
Device Discovery	Broadcast	○	○ ²	○ ²	○
	IP address	○	○	○	○
	IP range	○	X	X	X
High Usability & Convenience	Grouping & smart folder	○	X ³	X ³	X ³
	Printer information with thumbnail image	○	○	X	X
	Real-time printer, job & supplies status	○	○ ⁴	X	○
	Automatic model updates	○	X	X	X
	Sorting & filtering	○	○	X	X
	Familiar user interface with traditional mode	○	○	○	○
	Localization (number of languages)	23	25	19	35
Configuration and Remote Deployment	Pre-configuration & Packaging	○	○ ⁵	X	○
	Driver Policy Deployment	○	X	X	X
	Remote Installation	○	○ ⁶	○ ⁷	○ ⁸
	Deployment through Active Directory	○	X	X	X
Other Vendor support	Color printer	○	○	X	X
	Duplex printer	○	○	○	○

- 1 Static only
- 2 Limited to searching for IP address within the subnet.
- 3 Grouping only
- 4 Job status is not supported.
- 5 Provides a way to pre-configure & package but needs to install the printer driver before pre-configuring.
- 6 Needs user intervention when it is notified.
- 7 Provides a driver management plug-in for HP Webjet Admin.
- 8 Provides a separate utility or software for driver pre-configuration, packaging, and remote installation.

For more information, please visit <http://www.hp.com/go/Samsung>

© Copyright 2018 HP Development Company, L.P. The information contained herein is subject to change without notice.

This white paper is provided for information purposes only. All of the information included herein is subject to change without notice. Samsung Electronics is not responsible for any direct or indirect damages, arising from or related to use of this white paper.

Printing solutions
as easy as

