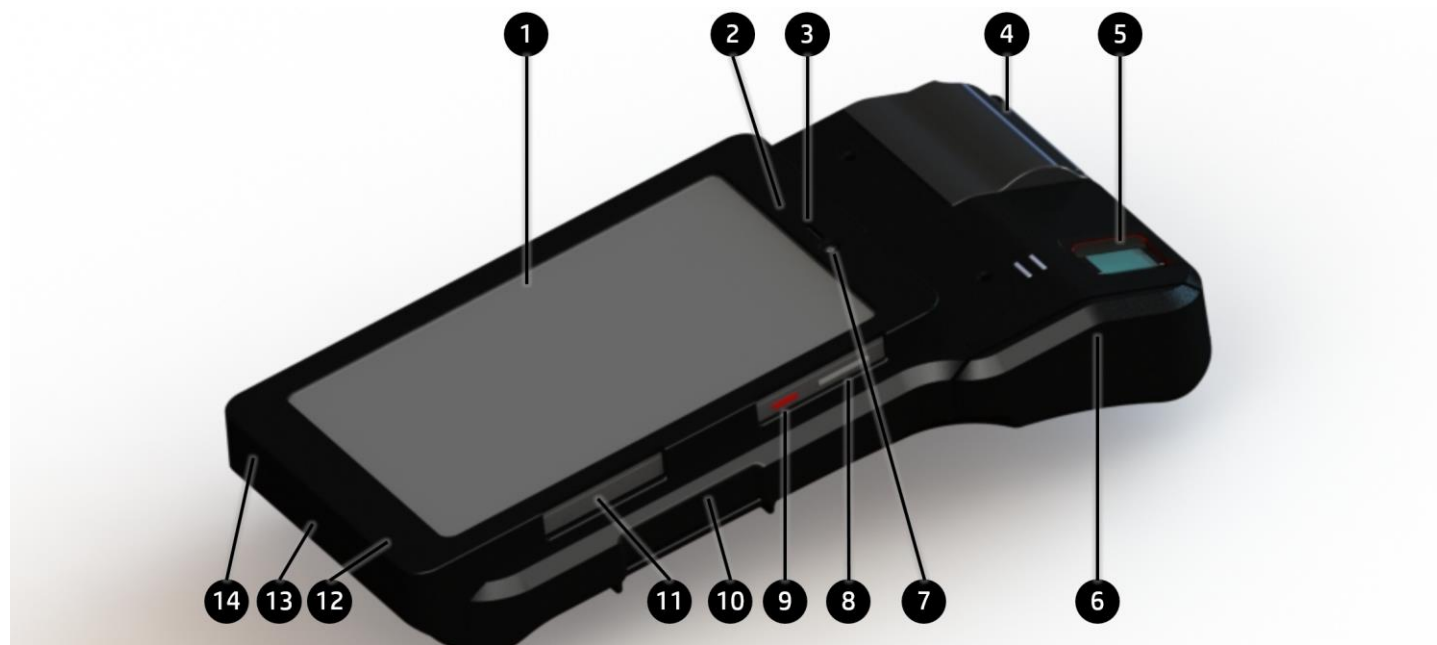


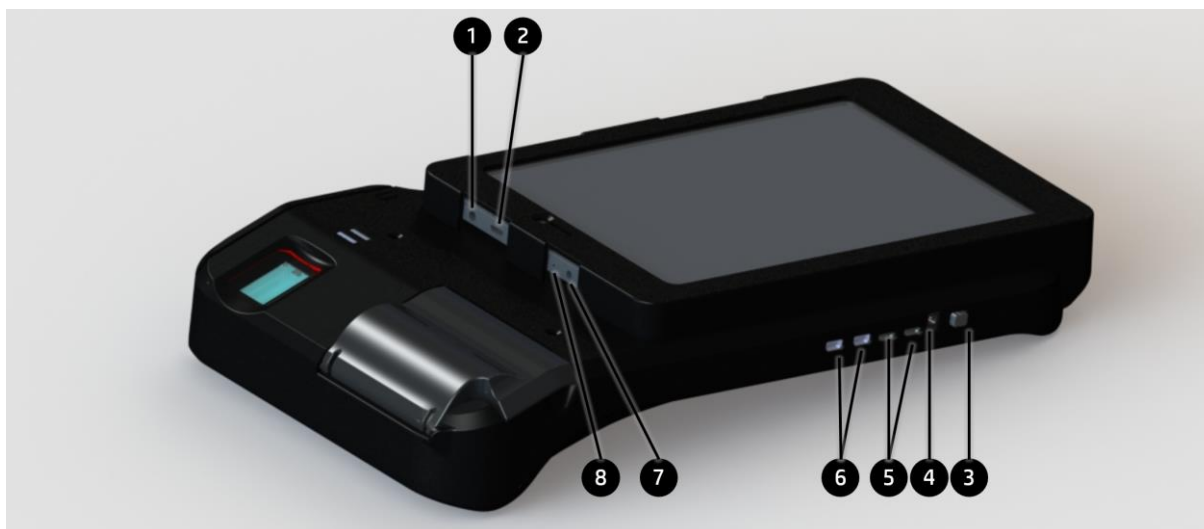
Overview

HP Pro 8 Tablet with Voice with Evolute Leopard

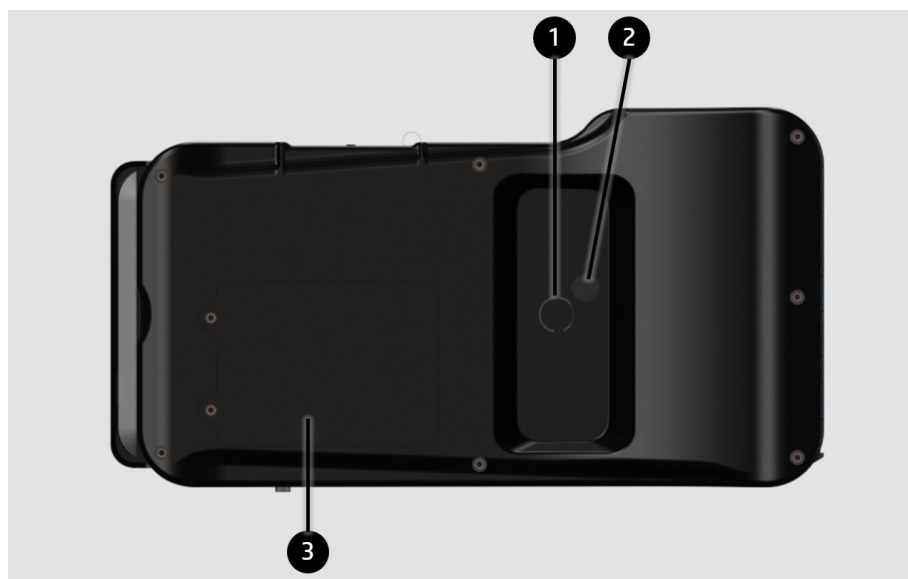


- | | | | |
|----|------------------------|-----|---|
| 1. | Tablet | 8. | Volume button |
| 2. | Power and Battery LED | 9. | Power button |
| 3. | Camera | 10. | Smart Card Reader |
| 4. | 2" Thermal Printer | 11. | Micro SIM card/MicroSD memory card tray |
| 5. | Fingerprint Reader | 12. | Microphone |
| 6. | Magnetic Stripe Reader | 13. | Second Smart Card Reader |
| 7. | Earpiece | 14. | Speaker |

Overview



- | | |
|--|---------------------------|
| 1. 3.5mm combo headset / microphone jack | 5. 2 x Micros USB ports |
| 2. Micro-B USB port | 6. 2 x Serial Ports |
| 3. Jacket on/off button | 7. Tablet power connector |
| 4. Jacket power connector | 8. Microphone |



- | | |
|-----------------|-------------------------|
| 1. Camera | 3. Jacket battery cover |
| 2. Camera Flash | |

Overview

AT A GLANCE

- Expand productivity with a device designed for mobile field workers, which supports configurable biometric, scanning and printing modules* and provides outdoor readability, high temperature endurance and long battery life
- Integrated jacket connected to the tablet via Bluetooth and is powered by a separate battery
- Security features include configurable fingerprint reader & smart card reader for secure authentication
- Allows for processing of cards such as credit cards, RuPay cards and EMV cards with a three-track, bi-directional magnetic stripe reader
- 2" Thermal printer to print receipts, supports different fonts and printing barcodes and custom graphics
- Capacity to expand with 1 Micro USB OTG port on tablet, and 2 micro USB ports & 2 serial ports on the jacket
- Android™ Marshmallow 6.0
- Mediatek MT8735V/W Quad Core (Cortex-A53), 1.3 GHz
- 8-inch diagonal (800 x 1280) wide viewing angle Outdoor IPS display with 10 point capacitive touch; 188 Pixels Per Inch 16:10 aspect ratio, 16.7M color
- 2 GB LPDDR3
- 16 GB embedded Multi Media Card (eMMC)
- Micro SD Card Slot supported, expandable up to 128 GB
- 802.11 b/g/n 2.4GHz Miracast compatible
- Bluetooth® 4.0 + LE connectivity
- 4G/LTE: (GSM 850/900/1800/1900, WCDMA B1&B8, LTE (Band 3 & 40))

NOTE: See important legal disclosures for all listed specs in their respective features sections.

* Modules require configuration at time of purchase. Refer to configurations section for available configurations

Technical Specifications

PRODUCT NAME

HP Pro 8 Tablet with Voice with Evolute Leopard

OPERATING SYSTEM

Android™ Marshmallow 6.0*

*This product has Android™ 6.0 Marshmallow Operating System pre-installed. Upgrade to Android™ Nougat expected by March 2018.

PROCESSOR

MediaTek MT8735 V/W ARM Cortex™ A processor

Quad Core* 1.3GHz

Embedded GPU Mali T720MP2 450Mhz

* Multicore is designed to improve performance of certain software products. Not all customers or software applications will necessarily benefit from use of this technology. Performance and clock frequency will vary depending on application workload and your hardware and software configurations. Model numbering is not a measurement of clock speed.

DISPLAY

8-inch diagonal capacitive multi-touch, wide viewing angle Outdoor IPS display

Size	8" diagonal
Resolution	800 x1280
Brightness	Typical 500 nits (cd/m ²)
Color depth	16.7 M
Pixels Per Inch	188 PPI
Aspect Ratio	16:10 Aspect Ratio (orientation agnostic)
Multitouch	Yes, 10 point capacitive
Bonding	Air bonding

Technical Specifications

INTERNAL STORAGE

Internal Storage Device

16 GB embedded Multi Media Card (eMMC)*

Micro SD Card Slot

Supports MicroSD Cards up to 128 GB**

SD and SDHC formats supported

* For storage, GB = 1 billion bytes. Actual formatted capacity is less. Up to 7GB of system disk is reserved for system recovery software.

** MicroSD card must be formatted in FAT32 format before use. Maximum individual file size supported for read/write to the card is 4 GB. MicroSD Card sold separately.

MEMORY

Standard

2 GB LPDDR3-666 MHz

Transfer rates up to 1333 MT/s

Onboard memory not customer accessible/upgradeable

NETWORKING/COMMUNICATIONS

Wi-Fi

802.11 b/g/n (2.4 GHz)*

Miracast compatible**

Integrated GPS supports A-GPS, GLONASS, Geo Tagging

WWAN

4G/LTE***

GSM/GPRS/Edge	850/900/1800/1900MHz
UMTS/WCDMA	B1/B8 (UMTS2100/UMTS900)
LTE	B3/B40
Speed	LTE Cat4

Bluetooth®

Bluetooth® 4.0 + LE connectivity



Technical Specifications

* Wireless access point & Internet service required and not included. Availability of public wireless access points limited.

**Miracast technology only works with other Miracast ready devices. High definition (HD) content is required to view high-definition images. For details see <http://wi-fi.org/miracast>.

*** WWAN requires separately purchased service contract. Check with service provider for coverage and availability in your area. Connection speeds will vary due to location, environment, network conditions, and other factors.

AUDIO/MULTIMEDIA

Audio

Single 1.2 W Internal Speaker

2 Integrated audio Microphones

3.5 mm Combo headphone/microphone jack (wired headset included)

Cameras

Front Camera: 2MP, Fixed Focus 640 x 480 video recording at 30 fps, Low light capable

Rear Camera: 5MP, Auto Focus, HDR (High Dynamic Range), Low light capable, and Full HD* video playback & recording

* Full HD content required for Full HD video playback.

SENSORS

Ambient Light Sensor

Accelerometer

Gyroscope

Proximity Sensor

GPS, A-GPS, GLONASS, Geo Tagging

SOFTWARE

Android™ 6.0 Marshmallow

(This product has Android™ 6.0 Marshmallow Operating System pre-installed. Upgrade to Android™ Nougat expected by March 2018.)

Google Mobile Services and Applications

22 Indian regional languages supported*

Trigger an emergency call with panic button by pressing the power button three times in rapid succession**

HP Device Hub

HP User Guide

File Manager



Technical Specifications

* Device supports text input in the following languages: Assamese, Bengali, English, Gujarati, Hindi, Kannada, Malayalam, Marathi, Odia, Punjabi, Tamil, and Telugu.

Device supports rendering and display of the following languages: Assamese, Bengali, English, Gujarati, Hindi, Kannada, Kashmiri, Konkani, Malayalam, Manipuri, Marathi, Nepali, Oriya, Punjabi, Sanskrit, Sindhi, Tamil, Telugu, Urdu, Bodo, Santali, Maithili, Dogri

** Emergency call connectivity depends on network signals and connection to emergency services number defined in the area from your network operator. Caution: The emergency call may accidentally be triggered when repeatedly pressing the power button, pay attention to not accidentally trigger the panic button

SECURITY

ARM® TrustZone® (trusted execution environment)

Fingerprint Reader for Biometric authentication

Smart Card Reader for Card authentication (Optional)

POWER

Power Supply

Tablet:

27W 9V 3A Charging AC Adapter
Barrel type plug
Cable length 1.5m

Jacket

9.6W 9.6V 1A Charging AC Adapter
Barrel type plug
Cable length 1m

Battery

Tablet:

6000 mAh Li-ion Polymer, 22.8Whr

Jacket:

2250 mAh Li-ion Polymer

Battery Life

Tablet:

Standby*	Up to 400 hours
Video Playback**	Up to 15 hours
Browsing***	Up to 8.5 hours
Talking****	Up to 20.5 hours
Charging Time	3 hours 43 minutes

Jacket:

Standby*****	Up to 96 hours
Printing	Up to 1500 receipts of 5 cm each or up to 4 hours continuous printing
Charging Time	3 hours 30 minutes

Technical Specifications

* Tested by HP with WLAN and WWAN connected, display, volume, GPS and ambient light sensor off. Actual battery life will vary depending on configuration and maximum capacity will naturally decrease with time and usage.

** Tested by HP using continuous 720p video playback, 150 nits brightness, system audio level at 50%, played from external storage, headphone attached, airplane mode on. Actual battery life will vary depending on configuration and maximum capacity will naturally decrease with time and usage.

*** Tested by HP using Wi-Fi for browsing, with maximum brightness, system audio level at 50% and WWAN connected. Actual battery life will vary depending on configuration and maximum capacity will naturally decrease with time and usage.

**** Tested by HP with maximum volume using speaker for audio, WLAN and WWAN connected. Actual battery life will vary depending on configuration and maximum capacity will naturally decrease with time and usage.

***** With Bluetooth disabled

WEIGHT & DIMENSIONS

Weight

1150 grams (2.54 lb) *

Dimensions (w x d x h)

298 x 164 x 50 mm (11.73 x 6.46 x 1.97 in)*

* Weight and system dimensions may fluctuate due to configuration and manufacturing variances.

PORTS/SLOTS

Ports

- 1 Micro USB 2.0 Support OTG*
- 2 Micro USB B ports* (on jacket)
- 2 Micro serial cable ports* (on jacket)
- 1 3.5 mm Combo headphone/microphone jack (wired headset included)
- 1 Barrel type plug charging port (on tablet)
- 1 Barrel type plug charging port (on jacket)
- 1 Micro SIM card slot

Expansion Slots

- 1 MicroSD card slot**

* USB does not support charging.

** Up to 128 GB of expandable storage. MicroSD card must be formatted in FAT32 format before use. Maximum individual file size supported for read/write to the card is 4 GB. MicroSD card sold separately.

Technical Specifications

CONFIGURATIONS

Available Configurations

SKU 1: 2GW42PA#ACJ	Fingerprint Reader, Thermal Printer
SKU 2: 2GW43PA#ACJ	Fingerprint Reader only
SKU 3: N5Z78PA#ACJ	Fingerprint Reader, Thermal Printer, Magnetic Stripe Reader, Smart Card Reader

Fingerprint Reader

Technology	Optical / Capacitive technology sensor
Supported formats	ISO SC37 19794-2/4 or ANSI/INCITS 378 template formats
Resolution	500 dpi
Operating Temperature	32° – 122 °F (0° – 50° C)

Thermal Printer

General	2" line direct thermal dot printer Supports text, bar code and graphic printing
Resolution	0.125mm dots (8dots/mm or 203 dpi) Effective printing area: 48mm
Speed	70mm per sec
Fonts	Multi font (24 or 42 characters per line)

Magnetic Stripe Reader

General	Bi-directional Reads up the three (3) tracks
Formats	Reads ISO/IEC 7813 cards
Encryption	BDS & AES encryption

Smart Card Readers

General	Synchronous/Memory Cards Asynchronous Cards: T=0 and T=1
Formats	ISO7816-1,2,3 & 4 Smart card reader interface

Technical Specifications

IN THE BOX

- HP Pro 8 Tablet with Voice with Evolute Leopard
- 27W 9V 3A AC tablet charger with barrel type plug
- 9.6W 9.6V 1A jacket charger with barrel type plug
- USB to Micro USB Cable
- OTG Cable
- Wired Headset
- Screen Protector
- SIM slot PIN
- Quick Start Guide

SERVICE AND SUPPORT

Protected by HP standard one year limited warranty including parts and onsite labor. 90 day software limited warranty options depending on country. Batteries have a one year default limited warranty. Terms and conditions may vary by country. On-site service and extended coverage is also available. HP Care Pack Services are optional extended service contracts that go beyond the standard limited warranties. To choose the right level of service for your HP product, use the HP Care Pack Services Lookup Tool at: <http://www.hp.com/go/cpc>.

Service levels and response times for HP Care Packs may vary depending on your geographic location. Service starts on date of hardware purchase. Restrictions and limitations apply. For details, visit www.hp.com/go/cpc.

Technical Specifications

SYSTEM UNIT

Tablet

Stand-Alone Power Requirements (AC Power)

Nominal Operating Voltage 100-240V, 50-60Hz

Temperature

Operating 14° to 122° F (-10° to 50° C)
Special* (Low and High Temperature)

Typical 32° to 104° F (0° to 40° C)

Non-operating -4° to 140° F (-20° to 60° C)

Relative Humidity

Operating 0% to 90%

Non-operating 0% to 95%

Shock

Operating 40 G, <=3 ms, half-sine

Random Vibration

Operating 1.043 grms

Non-operating 3.50 grms

Altitude (unpressurized)

Operating -50 to 15,000 ft (-15.24 to 4,572 m)

Jacket

Stand-Alone Power Requirements (AC Power)

Nominal Operating Voltage 240V, 50-60Hz

Temperature

Operating 32° to 122° F (0° C to 50° C)

Relative Humidity

Operating 95% RH non condensing

For accessibility information on HP products, please visit: <http://www.hp.com/accessibility>.

*Not meant to operate for more than two hours under these conditions, product will automatically shut down. Test performed with a fully charged battery, device stored for 30mins, using continuous 720p video playback, with middle level brightness, system audio level at 100% no adapter connected for two hours.

Technical Specifications

INDUSTRY STANDARD CERTIFICATIONS

Tablet:

EMC Compliance - EU/FCC/IC CISPR 22 / EN 55022; CISPR 24 / EN 55024; FCC CFR 47 Part 15 / ICES-003

Safety Compliance - UL/CSA/CB IEC/CSA/UL/EN 60950-1

Telecom & SAR Compliance - EU/FCC/IC EN 300 328; EN 300 440; EN 301 489; EN 301 893; EN 301 908; EN 301; EN 62311; EN 62209; EN 62479; FCC 47 CFR Part 2; IC RSS102

CE, EMI&RF, FCC EMI, BIS, IEC 60601, BQB, ISO 9001

Tablet Battery:

UL 1642, UL 2054, BIS, IEEE1725 PACK, IEEE1725 Cell, UN/DOT 38.3, IEC/EN/UL 62368, IEC/EN 621

Tablet Adapter:

CB, CE, UL, FCC, BIS, IEC 60601

Jacket, Jacket Battery and Jacket Adapter

BIS

STQC (for fingerprint reader)

RD service / LO certification (for fingerprint reader)

ENVIRONMENTAL DATA

Tablet

Low Halogen*

ENERGY STAR® certified**

Mercury Free display backlights and arsenic-free display glass

Recycled Packaging

EPEAT® Silver***

ROHS (including adapter)/REACH/GSE

WEEE (including adapter)

RAT, EDS

HP Inc. Corporate Environmental Information

For more information about HP's commitment to the environment:

Global Citizenship Report

<http://www.hp.com/hpinfo/globalcitizenship/gcreport/index.html>



Technical Specifications

Environment website

<http://www.hp.com/environment>

* External power supplies, power cords, cables and peripherals are not Low Halogen. Service parts obtained after purchase may not be Low Halogen.

** ENERGY STAR® is a registered trademark of the U.S. Environmental Protection Agency.

***EPEAT® registered where applicable. EPEAT registration varies by country. See www.epeat.net for registration status by country. Search keyword generator on HP's 3rd party option store for solar generator accessories at www.hp.com/go/options

Technical Specifications

COUNTRY OF ORIGIN

Tablet : China

Jacket including Biometric module : India

Technical Specifications

© Copyright 2018 HP Development Company, L.P. All rights reserved.

The information contained herein is subject to change without notice. The only warranties for HP products are set forth in the express limited warranty statements accompanying such products. Nothing herein should be construed as constituting an additional warranty. HP shall not be liable for technical or editorial errors or omissions contained herein. Android, Google, Google Play, Google logo and other marks are trademarks of Google Inc. Bluetooth is a trademark of its proprietor, used by HP Inc. under license. USB Type-C™ and USB-C™ are trademarks of USB Implementers Forum. ENERGY STAR is a registered trademark owned by the U.S. Environmental Protection Agency.



Change Log

Date of change:	Version History:	Description of change:
28-11-2017	Draft V2	Updates to microSD support, wifi a, Upgrade version expected by Mar18, correction in temp F conversion.
25-01-2018	From 2 to 3	Updates on Jacket battery spec, disclaimers on SDcard format, Service and Support