




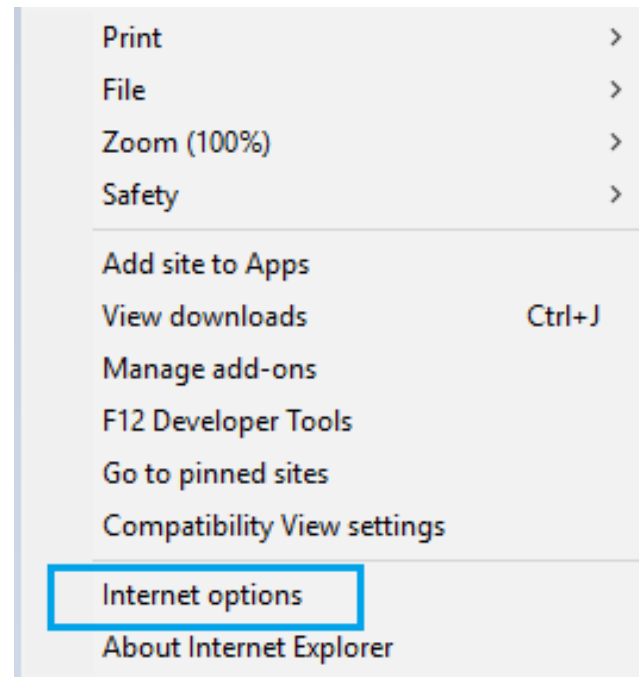
# Temporary Internet Explorer settings for Concentra

Oct 2018

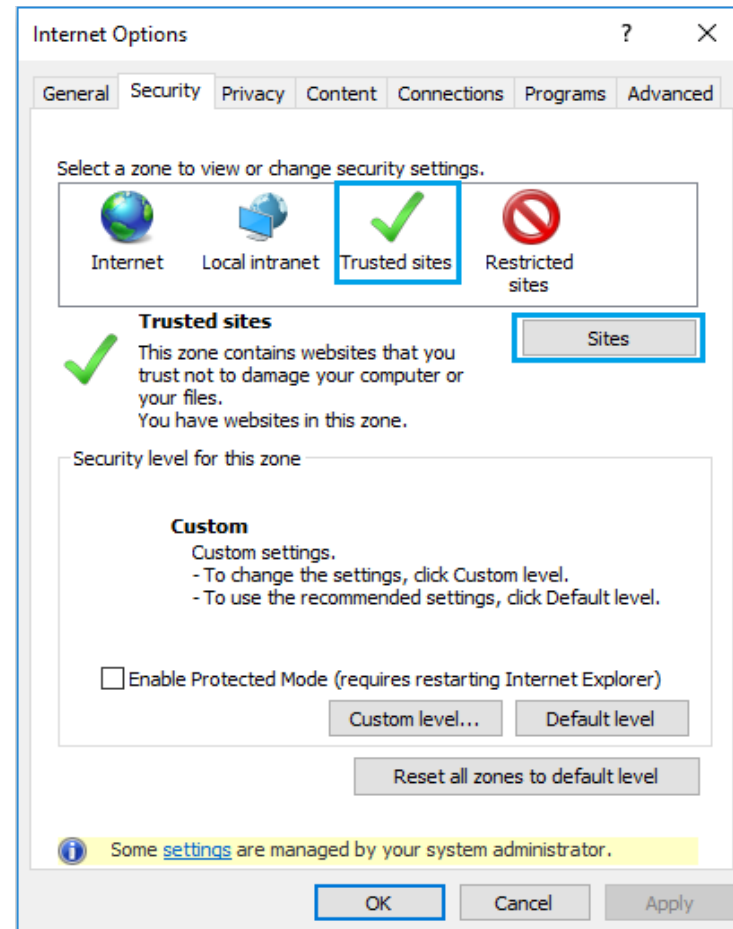


# Settings for Internet Explorer

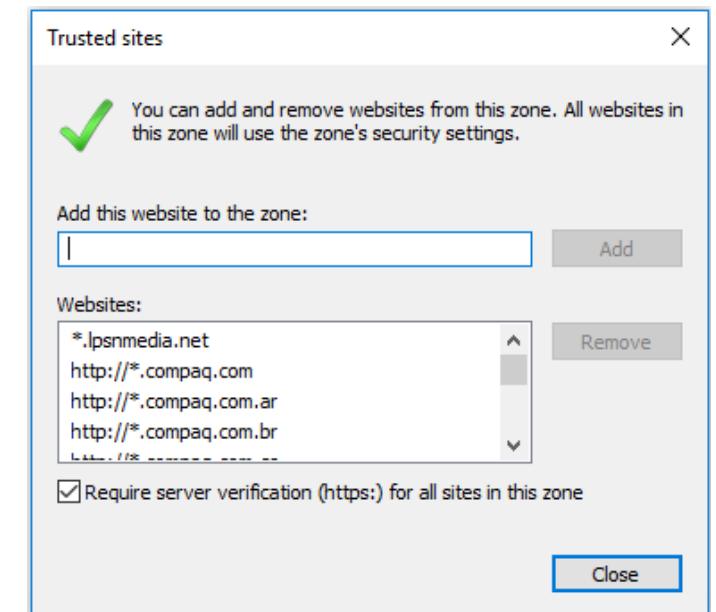
- Open Internet Explorer
- Tools ( the  icon, top right of screen)
- **Internet Options**



- **Security** tab
- **Trusted sites** section
- **Sites**

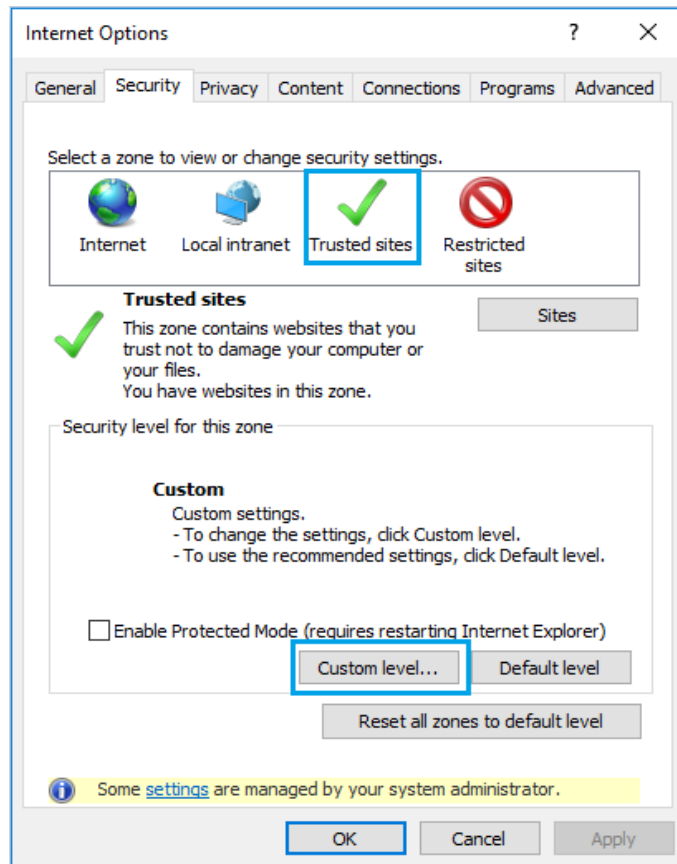


- Add the links for Concentra:  
<https://c1t29387.itcs.hpcorp.net/Concentra>

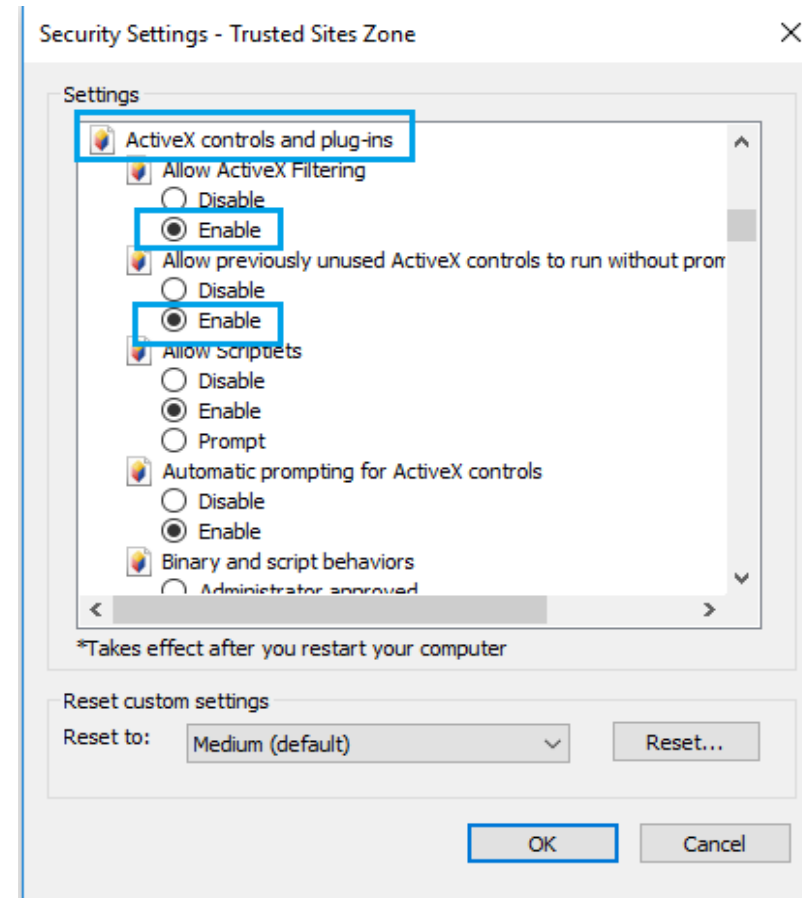


# Settings for Internet Explorer (continuation)

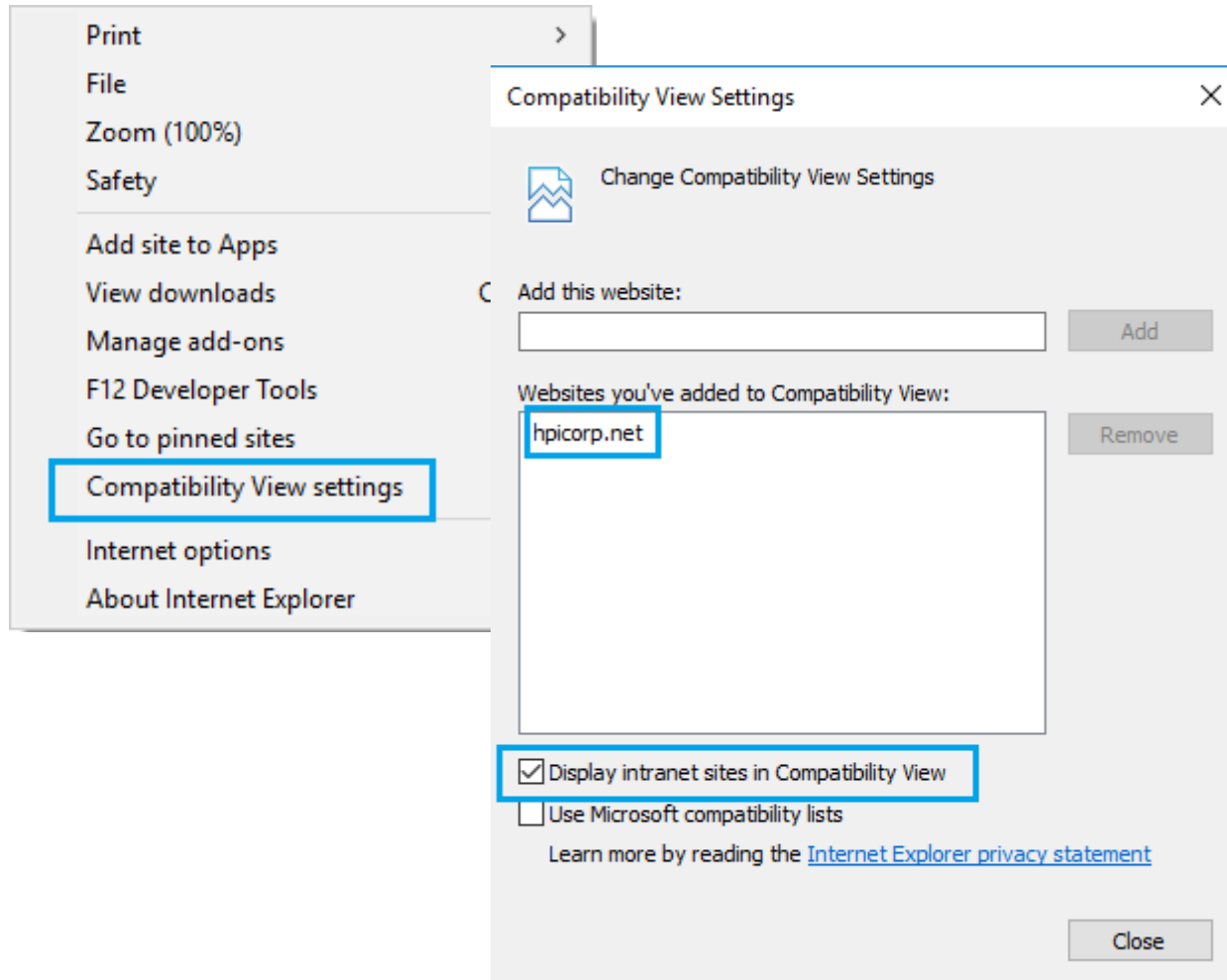
- Security tab
- Trusted sites section
- Custom level...




- Set all entries under ActiveX controls and plug-ins to Enabled

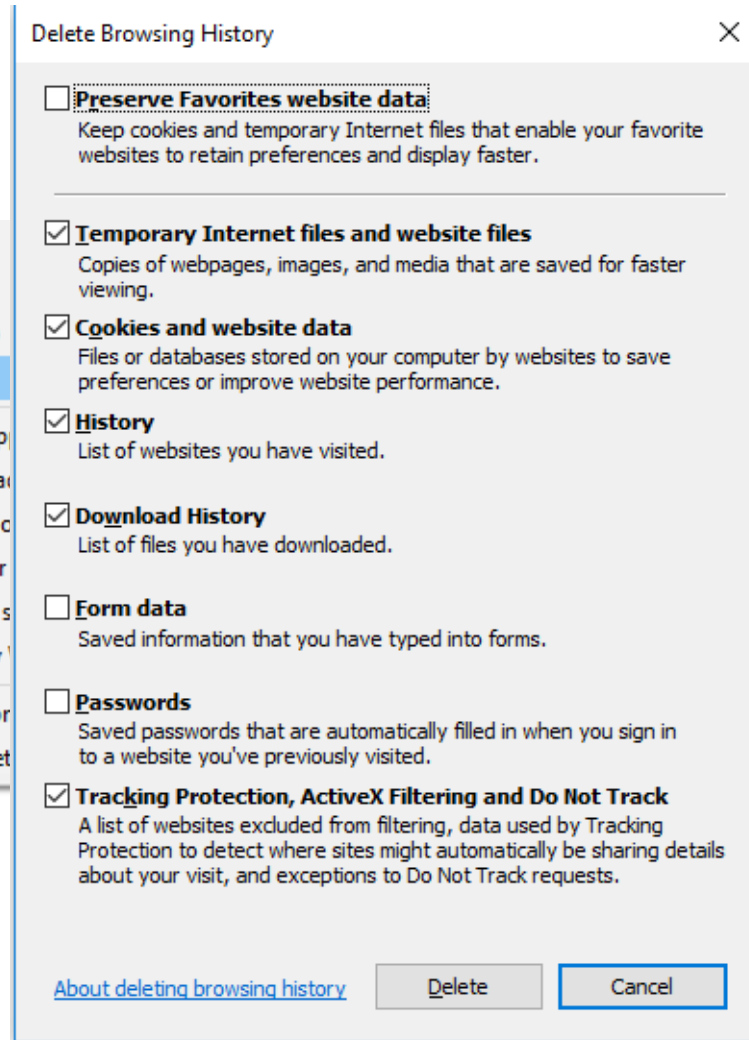
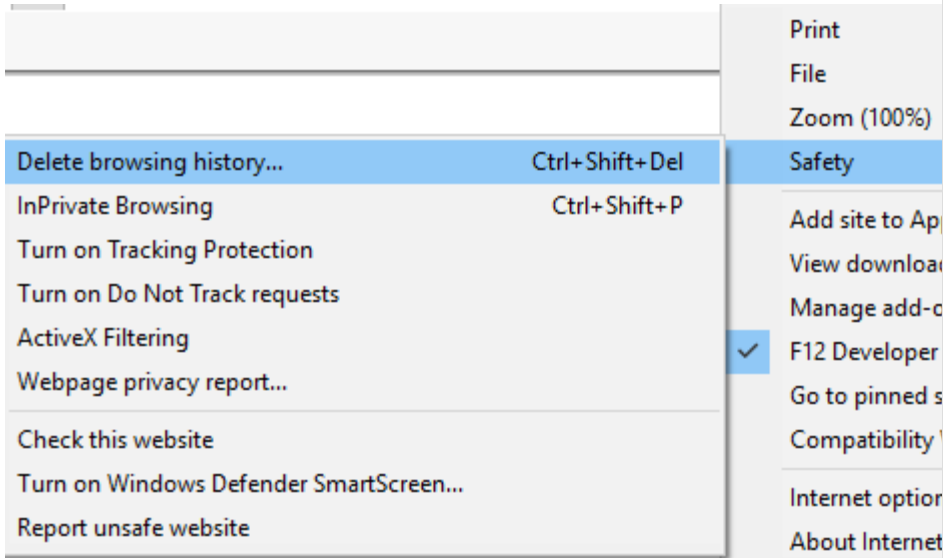



# Settings for Internet Explorer (continuation)



- Open Internet Explorer
- Tools ( the  icon, top right of screen)
- **Compatibility View settings**
- Type in **hpicorp.net** and click the **Add** button.
- Check the **Display intranet sites in Compatibility View** flag.

# Settings for Internet Explorer (continuation)

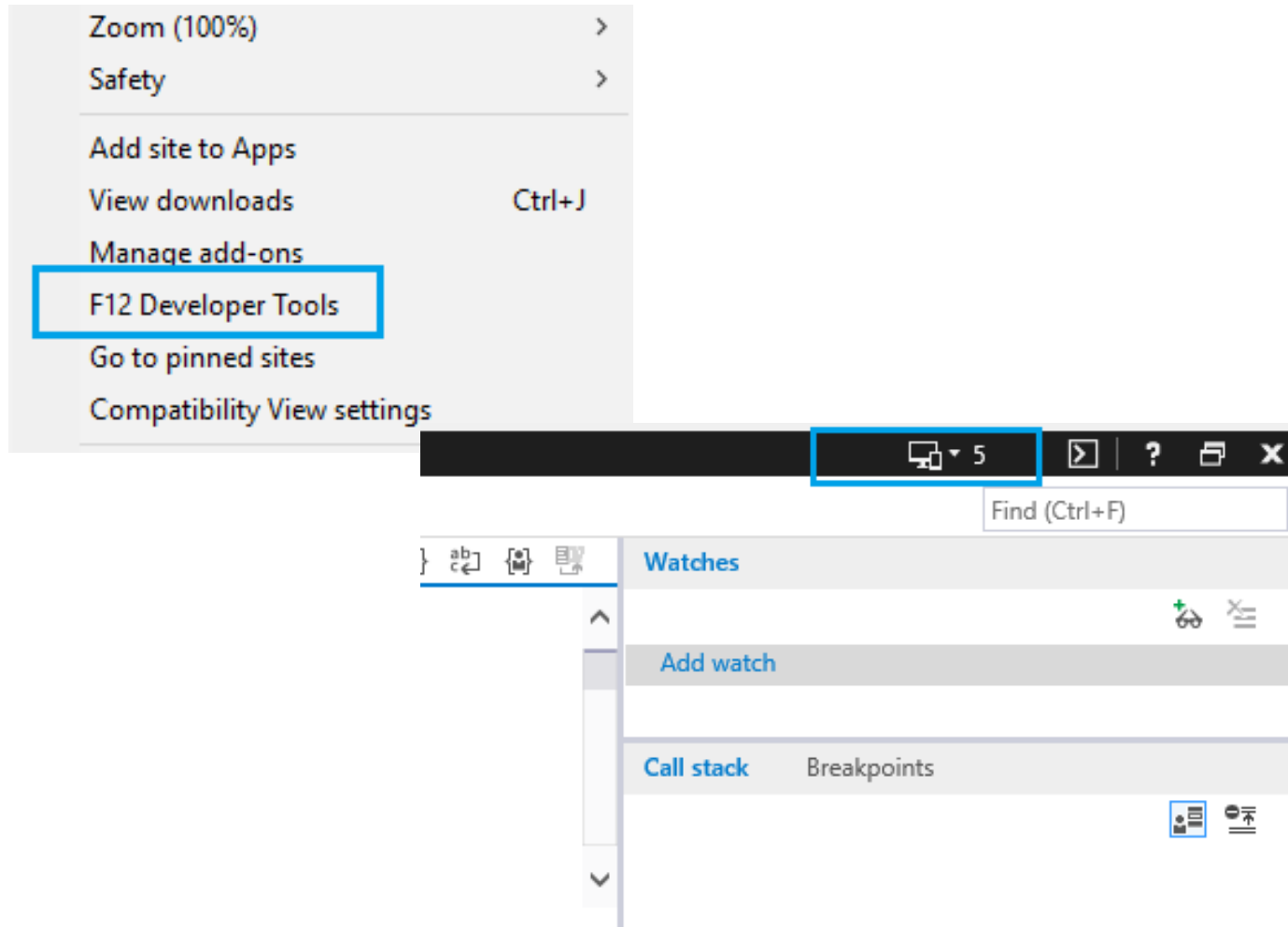



- Open Internet Explorer
- Tools ( the  icon, top right of screen)
- **Safety → Delete browsing History** (shortcut: **Ctrl+Shift+Del**)
- Have the flags checked as in this slide
- Click Delete

# Advanced IE settings

If you have applied the Basic settings and you are still experiencing issues with some of the functionalities of Concentra, apply the settings changes presented next.

# F12 Developer Tools



- Open Internet Explorer
- Tools ( the  icon, top right of screen)
- **F12 Developer Tools**
- A new window will be opened in the bottom half of your IE window
- In the top right of this window select the **Emulation** button and set it to **5**.

You will have to keep this window opened during the entire session in which you're using Concentra

# Thank you!

Concentra Business Support

